

T34S, R10W, 6th P.M.

SGOMI

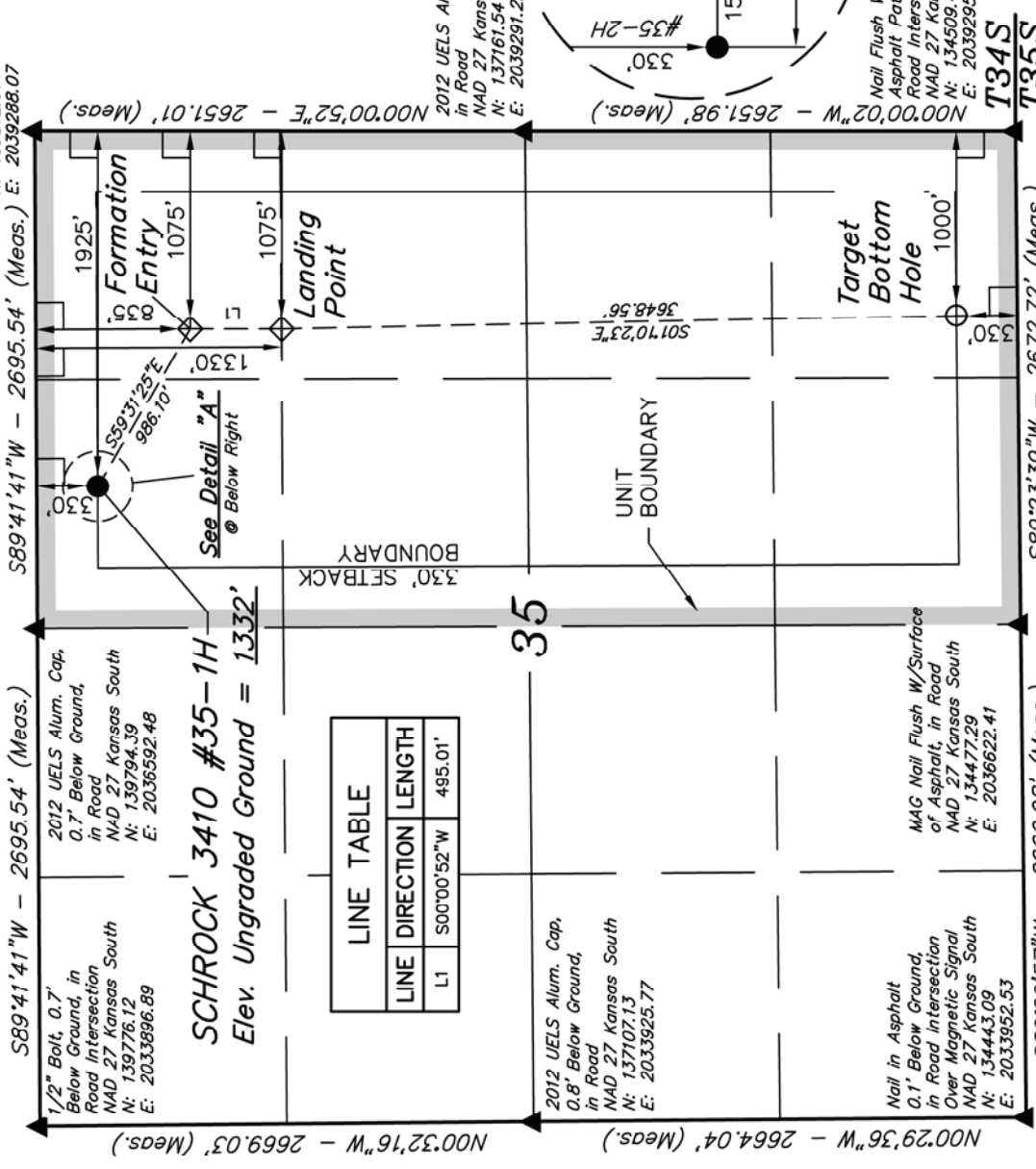
Well location, SCHROCK 3410 #35-1H, located as shown in the NW 1/4 NE 1/4 of Section 35, T34S, R10W, 6th P.M., Barber County, Kansas.

BASIS OF ELEVATION

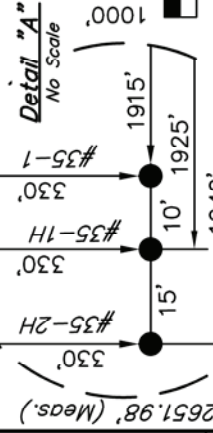
SPOT ELEVATION LOCATED AT THE SOUTHWEST CORNER OF SECTION 12, T35S, R10W, 6th P.M. TAKEN FROM THE CORWIN, QUADRANGLE, KANSAS, 7.5 MINUTE QUAD (TOPOGRAPHIC MAP) PUBLISHED BY THE UNITED STATES DEPARTMENT OF THE INTERIOR, GEOLOGICAL SURVEY. SAID ELEVATION IS MARKED AS BEING 1274 FEET.

BASIS OF BEARINGS

BASIS OF BEARINGS IS A G.P.S. OBSERVATION.



LINE TABLE		
LINE	DIRECTION	LENGTH
L1	S00°00'52\"W	495.01'



CERTIFICATE

THIS IS TO CERTIFY THAT THE ABOVE PLAT WAS PREPARED FROM FIELD NOTES OF ACTUAL SURVEYS MADE BY ME OR UNDER MY SUPERVISION AND THAT THE SAME ARE TRUE AND CORRECT TO THE BEST OF MY KNOWLEDGE AND BELIEF.

Justin R. ...

REGISTERED LAND SURVEYOR
REGISTRATION NO. N 858
STATE OF KANSAS

UNTAH ENGINEERING & LAND SURVEYING	
85 SOUTH 200 EAST - VERNAL, UTAH 84078 (435) 789-1017	
SCALE 1" = 1000'	DATE SURVEYED: 06-27-12
PARTY J.P. B.L. C.A.G.	DATE DRAWN: 07-05-12
WEATHER HOT	REFERENCES G.L.O. PLAT
	FILE SGOMI

LEGEND:

- = 90° SYMBOL
- = PROPOSED WELL HEAD.
- ▲ = SECTION CORNERS LOCATED.

NAD 83 (#35-1H SURFACE LOCATION)	NAD 83 (#35-1H FORMATION ENTRY)
LATITUDE = 37°02'58.75" (37.049653)	LATITUDE = 37°02'53.80" (37.048278)
LONGITUDE = 98°22'20.40" (98.372333)	LONGITUDE = 98°22'09.92" (98.369422)
NAD 27 (#35-1H SURFACE LOCATION)	NAD 27 (#35-1H FORMATION ENTRY)
LATITUDE = 37°02'58.66" (37.049628)	LATITUDE = 37°02'53.71" (37.048253)
LONGITUDE = 98°22'19.14" (98.371983)	LONGITUDE = 98°22'08.66" (98.369072)
STATE PLANE NAD 27 (KANSAS SOUTH) N: 139459.25 E: 2037363.41	STATE PLANE NAD 27 (KANSAS SOUTH) N: 138970.33 E: 2036214.02
NAD 83 (#35-1H TARGET BOTTOM HOLE)	NAD 83 (#35-1H TARGET BOTTOM HOLE)
LATITUDE = 37°02'48.91" (37.046919)	LATITUDE = 37°02'12.84" (37.036900)
LONGITUDE = 98°22'09.92" (98.369422)	LONGITUDE = 98°22'09.00" (98.369167)
NAD 27 (#35-1H TARGET BOTTOM HOLE)	NAD 27 (#35-1H TARGET BOTTOM HOLE)
LATITUDE = 37°02'48.82" (37.046894)	LATITUDE = 37°02'12.75" (37.036875)
LONGITUDE = 98°22'08.66" (98.369072)	LONGITUDE = 98°22'07.74" (98.368817)
STATE PLANE NAD 27 (KANSAS SOUTH) N: 138475.30 E: 2036214.61	STATE PLANE NAD 27 (KANSAS SOUTH) N: 134827.44 E: 2036294.36