

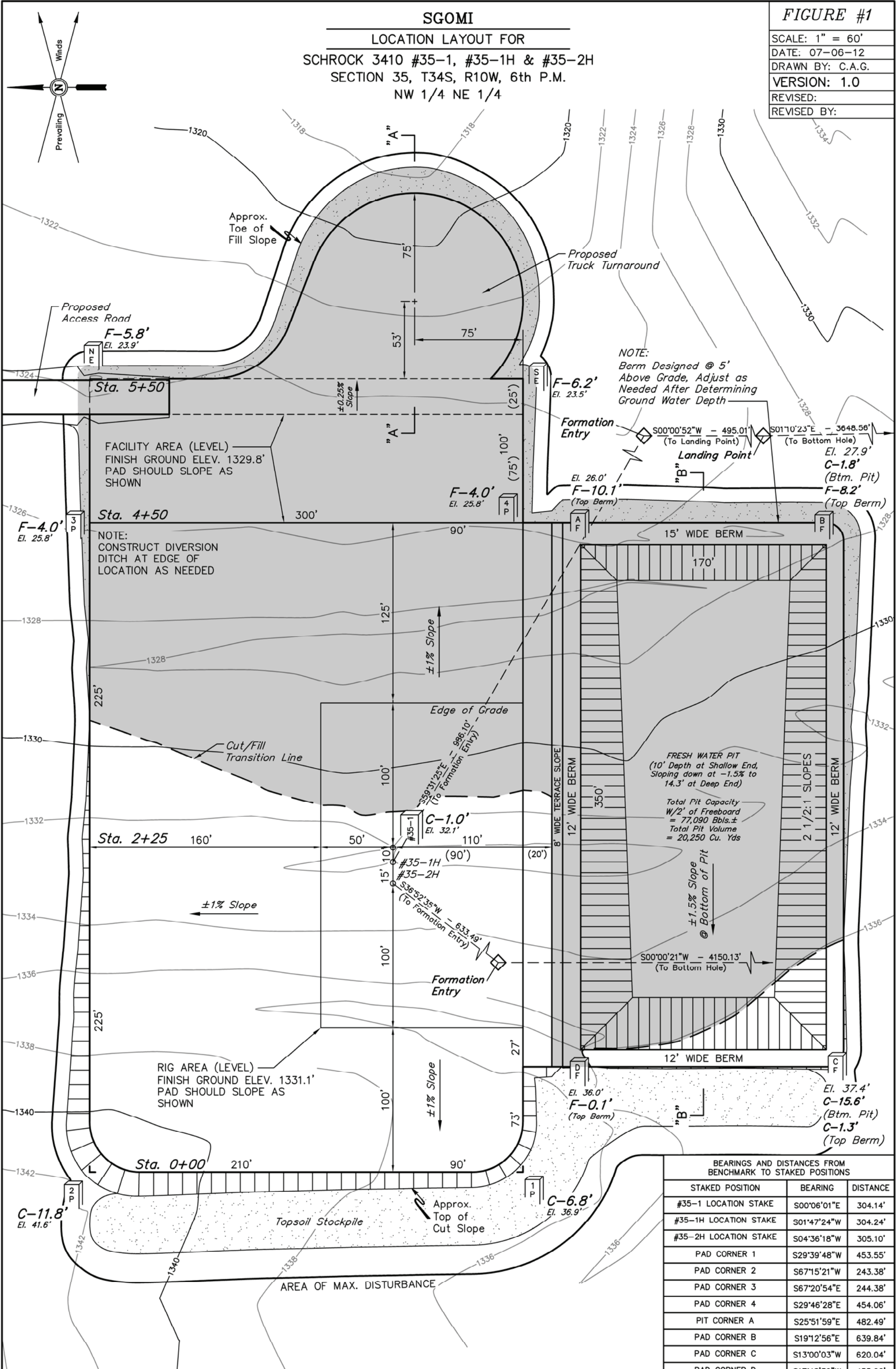
SGOMI

LOCATION LAYOUT FOR

SCHROCK 3410 #35-1, #35-1H & #35-2H
SECTION 35, T34S, R10W, 6th P.M.
NW 1/4 NE 1/4

FIGURE #1

SCALE: 1" = 60'
DATE: 07-06-12
DRAWN BY: C.A.G.
VERSION: 1.0
REVISED:
REVISED BY:



BEARINGS AND DISTANCES FROM BENCHMARK TO STAKED POSITIONS

STAKED POSITION	BEARING	DISTANCE
#35-1 LOCATION STAKE	S00°06'01"E	304.14'
#35-1H LOCATION STAKE	S01°47'24"W	304.24'
#35-2H LOCATION STAKE	S04°36'18"W	305.10'
PAD CORNER 1	S29°39'48"W	453.55'
PAD CORNER 2	S67°15'21"W	243.38'
PAD CORNER 3	S67°20'54"E	244.38'
PAD CORNER 4	S29°46'28"E	454.06'
PIT CORNER A	S25°51'59"E	482.49'
PAD CORNER B	S19°12'56"E	639.84'
PAD CORNER C	S13°00'03"W	620.04'
PAD CORNER D	S17°48'39"W	455.96'
NE FACILITIES CORNER	S73°52'20"E	338.90'
SE FACILITIES CORNER	S39°33'14"E	511.14'

Elev. Ungraded Ground At #35-1 Loc. Stake = 1332.1'
FINISHED GRADE ELEV. AT #35-1 LOC. STAKE = 1331.1'

UINTAH ENGINEERING & LAND SURVEYING
85 So. 200 East * Vernal, Utah 84078 * (435) 789-1017