

T34S, R10W, 6th P.M.

2 1/2" Pipe  
2.0' Below Ground, in  
Road Intersection  
NAD 27 Kansas South  
N: 139812.67  
E: 2039288.07

SGOMI

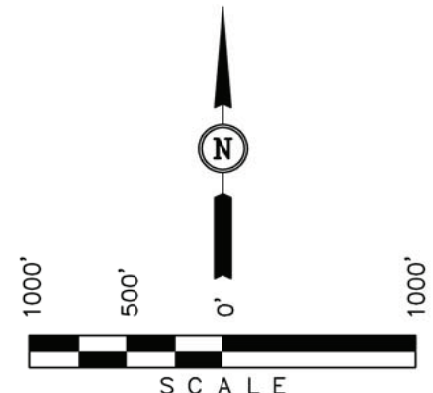
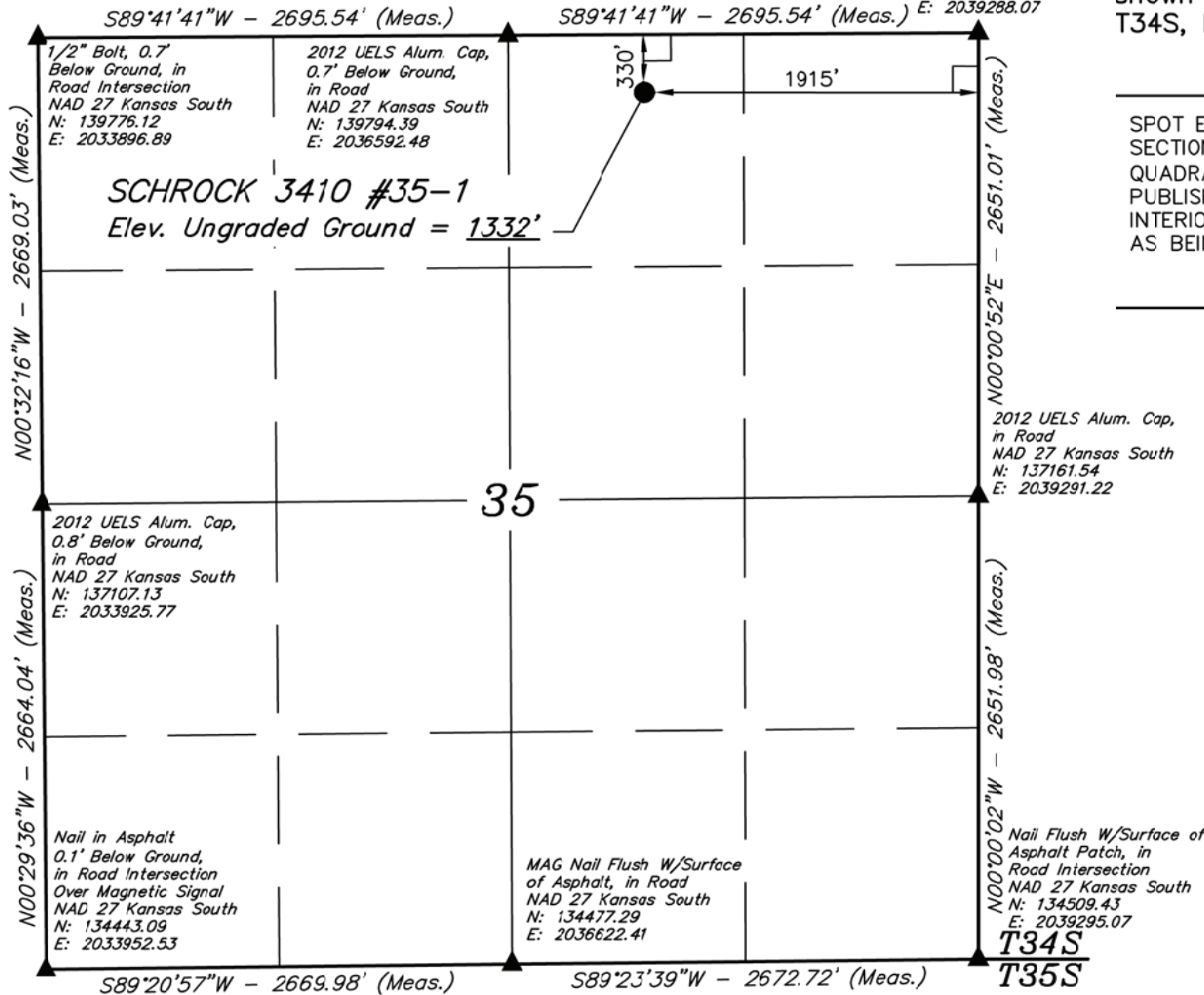
Well location, SCHROCK 3410 #35-1, located as shown in the NW 1/4 NE 1/4 of Section 35, T34S, R10W, 6th P.M., Barber County, Kansas.

BASIS OF ELEVATION

SPOT ELEVATION LOCATED AT THE SOUTHWEST CORNER OF SECTION 12, T35S, R10W, 6th P.M. TAKEN FROM THE CORWIN, QUADRANGLE, KANSAS, 7.5 MINUTE QUAD (TOPOGRAPHIC MAP) PUBLISHED BY THE UNITED STATES DEPARTMENT OF THE INTERIOR, GEOLOGICAL SURVEY. SAID ELEVATION IS MARKED AS BEING 1274 FEET.

BASIS OF BEARINGS

BASIS OF BEARINGS IS A G.P.S. OBSERVATION.



CERTIFICATE  
THIS IS TO CERTIFY THAT THE ABOVE PLAT WAS PREPARED FROM FIELD NOTES OF ACTUAL SURVEYS MADE BY ME OR UNDER MY SUPERVISION AND THAT THE SAME ARE TRUE AND CORRECT TO THE BEST OF MY KNOWLEDGE AND BELIEF.  
*Robert S. Galt*  
REGISTERED LAND SURVEYOR  
REGISTRATION NO. 1451  
STATE OF KANSAS

**UINTAH ENGINEERING & LAND SURVEYING**  
85 SOUTH 200 EAST - VERNAL, UTAH 84078  
(435) 789-1017

- LEGEND:**
- └─┘ = 90° SYMBOL
  - = PROPOSED WELL HEAD.
  - ▲ = SECTION CORNERS LOCATED.

<b>NAD 83 (#35-1 SURFACE LOCATION)</b>
LATITUDE = 37°02'58.75" (37.049653)
LONGITUDE = 98°22'20.28" (98.372300)
<b>NAD 27 (#35-1 SURFACE LOCATION)</b>
LATITUDE = 37°02'58.65" (37.049625)
LONGITUDE = 98°22'19.02" (98.371950)
<b>STATE PLANE NAD 27 (KANSAS SOUTH)</b>
N: 139469.23 E: 2037373.44

SCALE 1" = 1000'	DATE SURVEYED: 06-27-12	DATE DRAWN: 07-05-12
PARTY J.P. B.L. C.A.G.	REFERENCES G.L.O. PLAT	
WEATHER HOT	FILE SGOMI	