



**GAMMA RAY
NEUTRON
COLLAR LOG**

Company WILTON PETROLEUM
Well BURNETT #5-C
Field OTTER CREEK EAST EXTENSION
County COWLEY
State KANSAS

Company WILTON PETROLEUM
Well BURNETT #5-C
Field OTTER CREEK EAST EXTENSION
County COWLEY
State KANSAS

Location: API #: *off 5' for KB*
Permanent Datum SEC 28 TWP 33S RGE 8E
Log Measured From G.L. Elevation 1035'
Drilling Measured From K.B. 5' A.G.L. Elevation
K.B. DF. G.L. 1035'

Date	5-21-2012
Run Number	1-OLD WELL
Depth Driller	
Depth Logger	2380.4'
Top Log Interval	1434'
Bottom Logged Interval	2380.4'
Fluid Level	600' APPROX
Type Fluid	WATER
Production Casing	4.5" @ T.D. @
Max Recorded Temp.	
Estimated Cement Top	
Calculated Cement Top	
Amount & Type Cement	
Amount & Type Admix	
Drilling Contractor	
Equipment Number	107
Location	UDEN, D.
Recorded By	RIJINDSTORM
Checked By	BERNIE

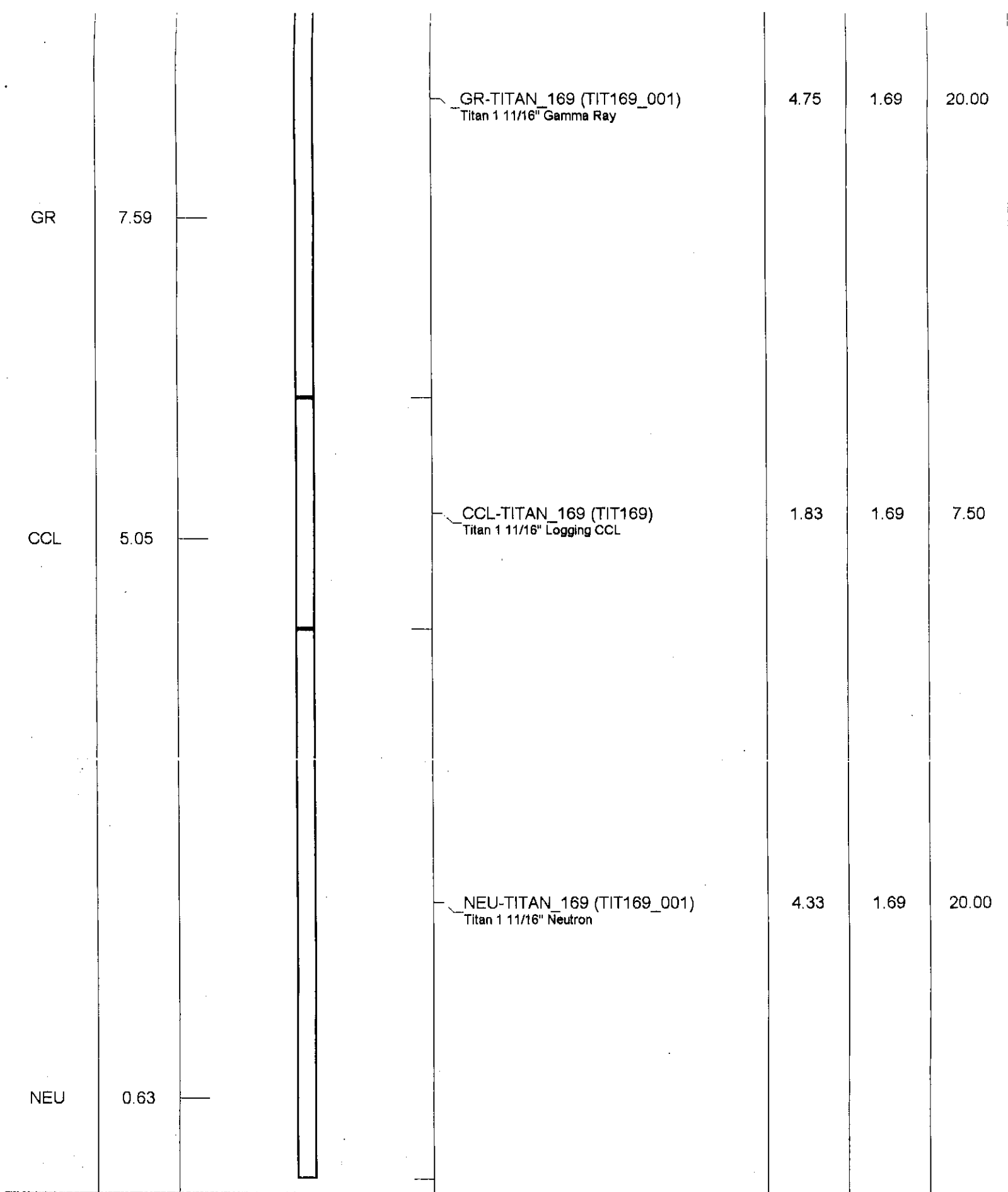
<<< Fold Here >>>

All interpretations are opinions based on inferences from electrical or other measurements and we cannot and do not guarantee the accuracy or correctness of any interpretation, and we shall not, except in the case of gross or willful negligence on our part, be liable or responsible for any loss, costs, damages, or expenses incurred or sustained by anyone resulting from any interpretation made by any of our officers, agents or employees. These interpretations are also subject to our general terms and conditions set out in our current Price Schedule.

Comments

WELL WAS ORIGINALLY COMPLETED ON 4-20-1983
IN CATTLEMANS SAND ZONE

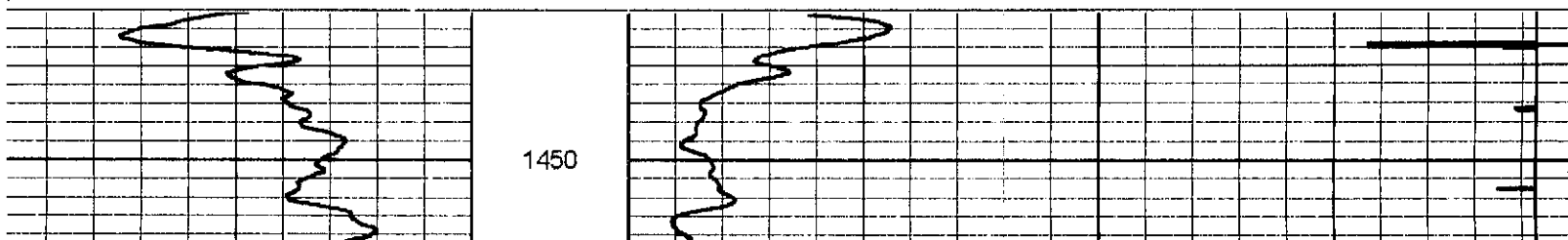
Sensor	Offset (ft)	Schematic	Description	Len (ft)	OD (in)	Wt (lb)
			GR-TITAN_169 (TIT169_001) Titan 1 11/16" Gamma Ray	4.75	1.69	20.00

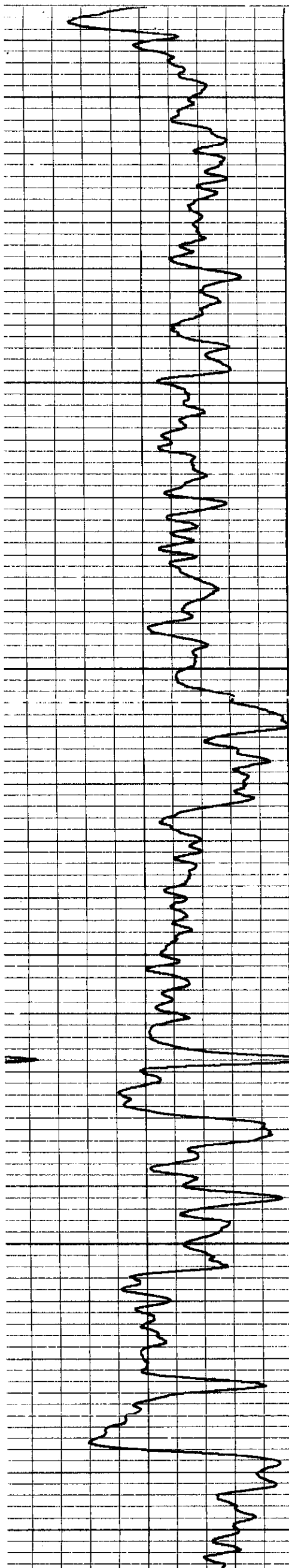


Dataset: burnett #5-c.db: field/well/run1/pass1
 Total Length: 10.92 ft
 Total Weight: 47.50 lb
 O.D.: 1.69 in

Database File: burnett #5-c.db
 Dataset Pathname: pass1
 Presentation Format: dirk 1
 Dataset Creation: Mon May 21 14:31:26 2012 by Log Std Casedhole 07122
 Charted by: Depth in Feet scaled 1:240

150	gr	300	100	NEU	1500
0	GR	150	13	CCL	-1





1450

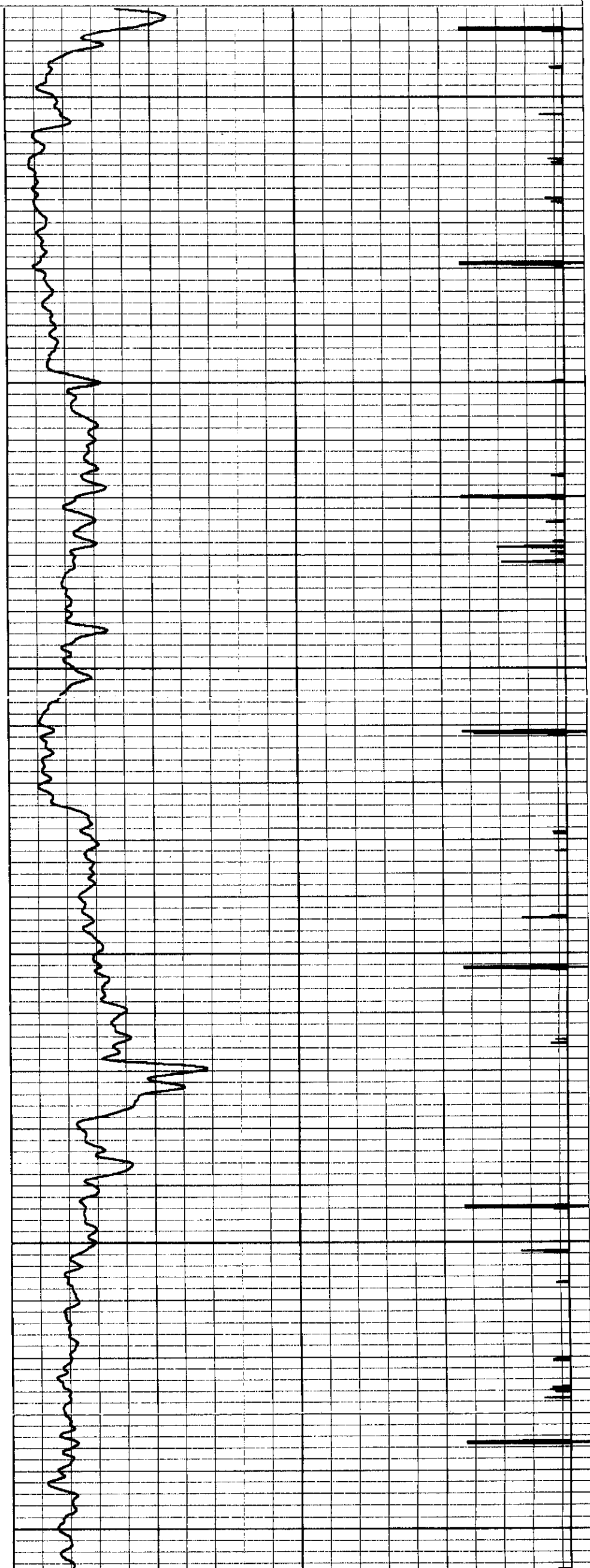
1500

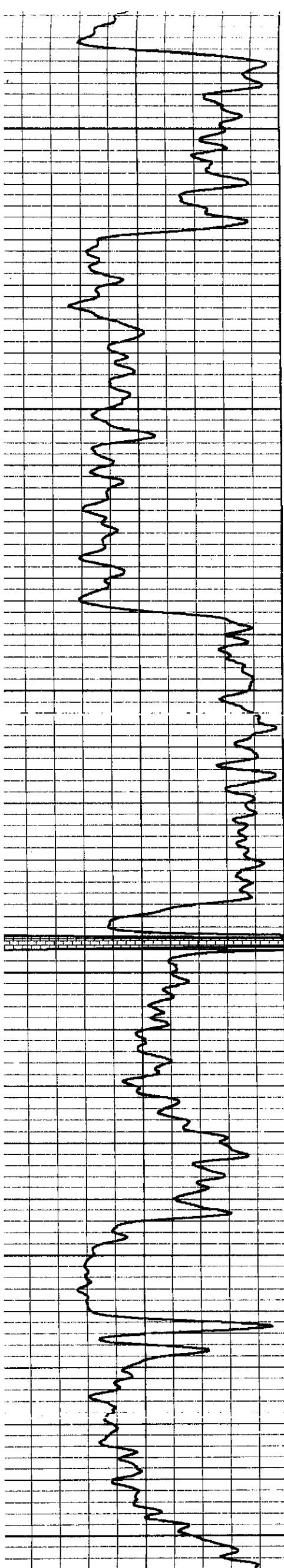
1550

1600

1650

1700





1700

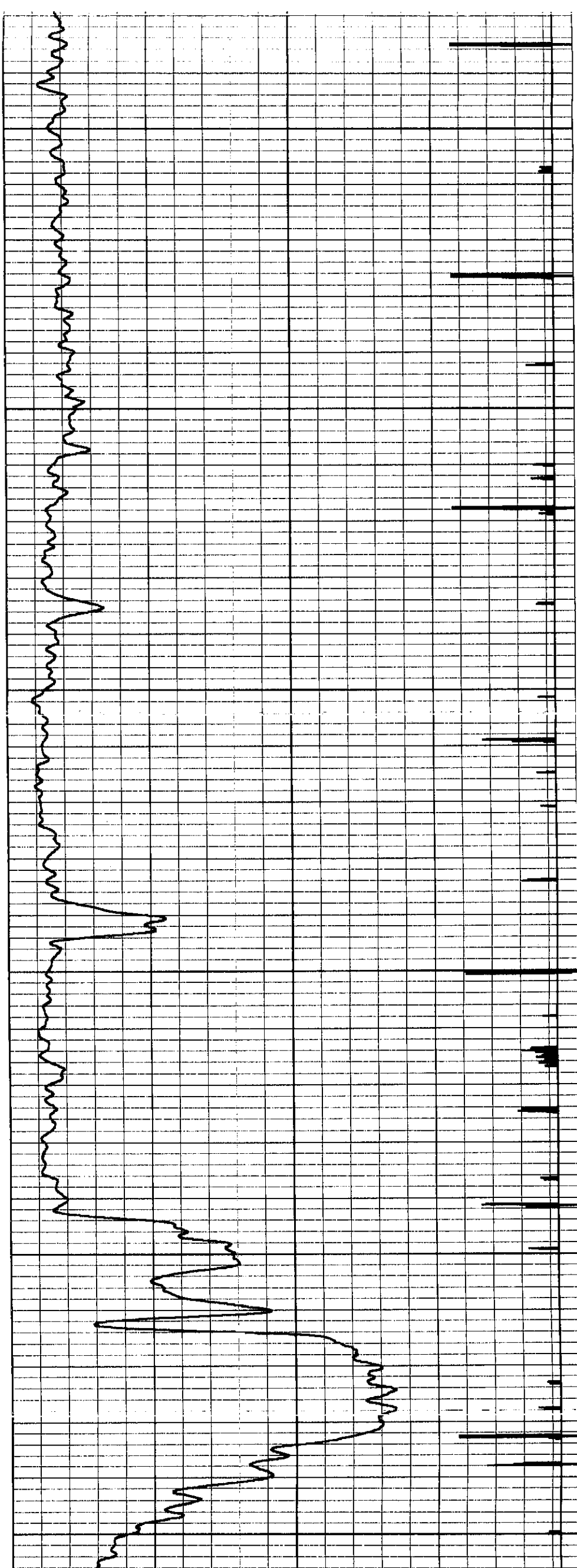
1750

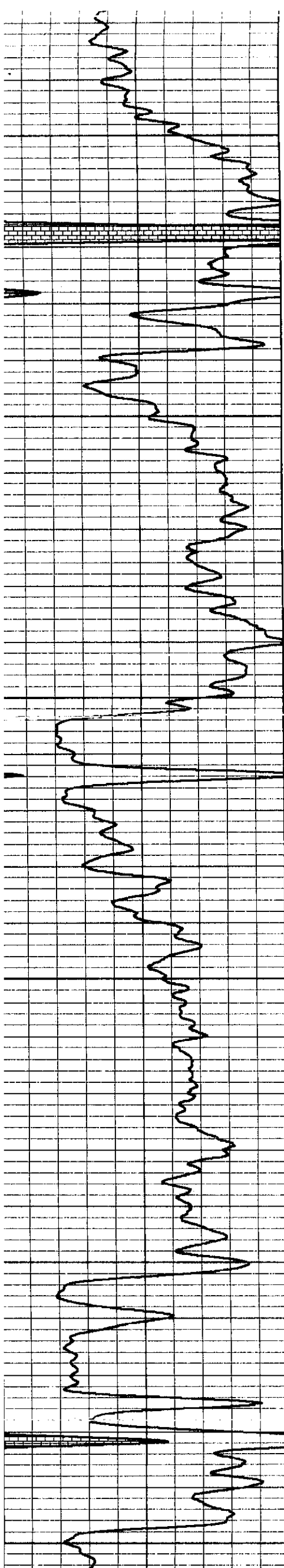
1800

1850

1900

1950





1950.

2000

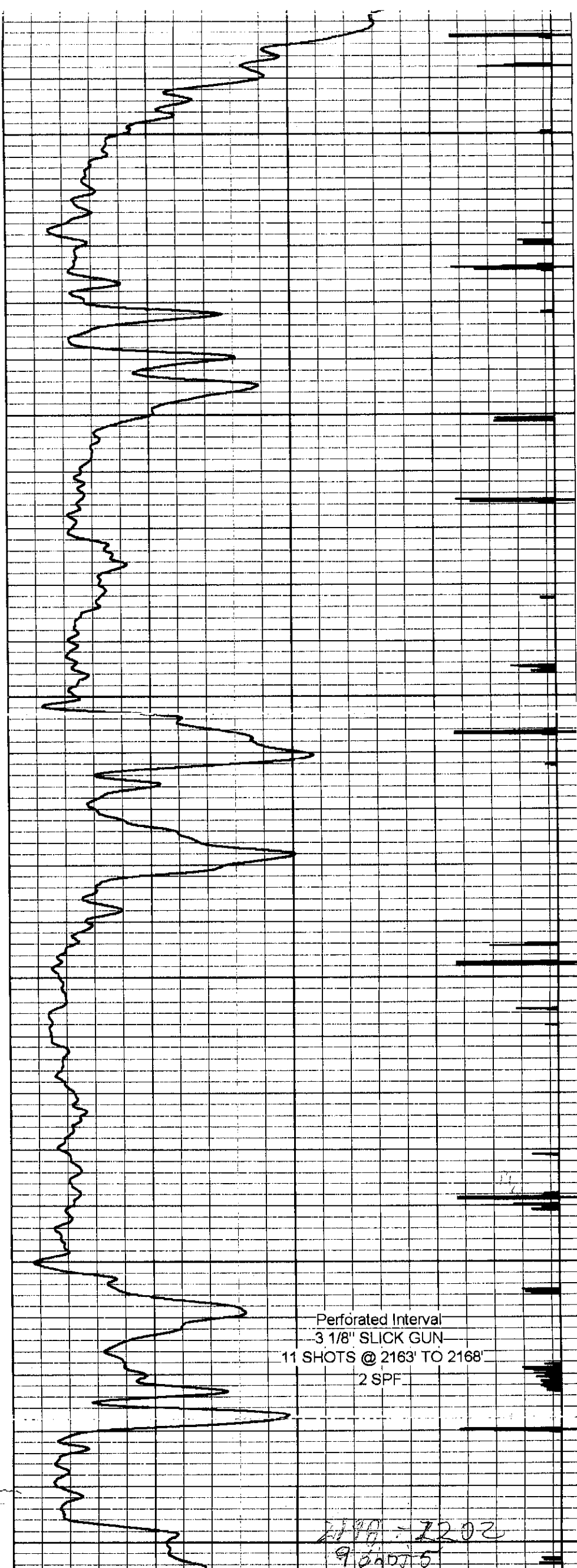
2050

2100

2150

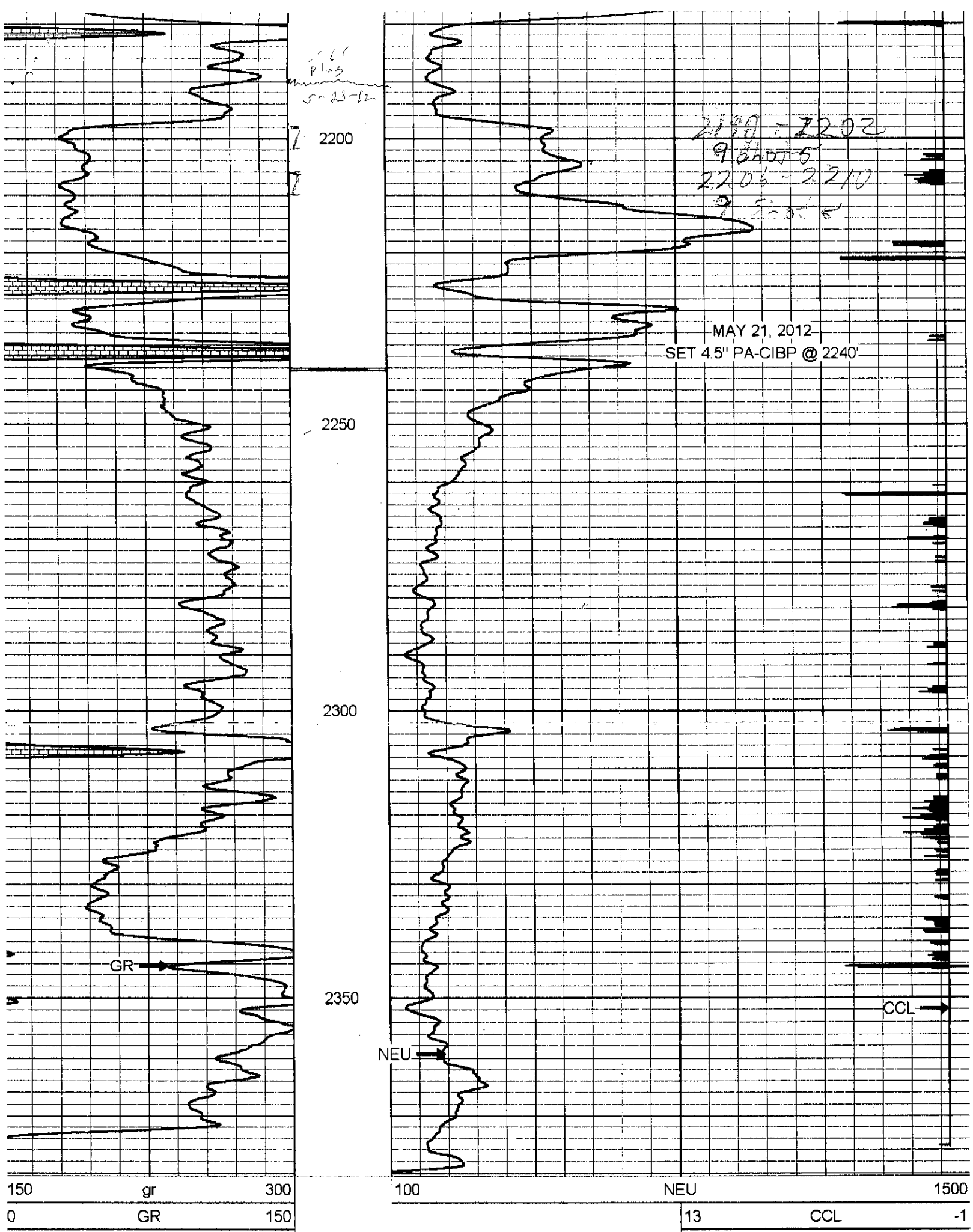
2200

2061
plus
5-23-62



Perforated Interval
3 1/8" SLICK GUN
11 SHOTS @ 2163' TO 2168'
2 SPF

2190 = 2202
9 20075



Company	WILTON PETROLEUM
Well	BURNETT #5-C
Field	OTTER CREEK EAST EXTENSION
County	COWLEY SEC. 28 TWP. 33S RGE. 8E
State	KANSAS
Date	5-21-2012