

Max R. Lovejoy

# GEOLOGIST'S REPORT

DRILLING TIME AND SAMPLE LOG

COMPANY: **Richie Exploration, Inc.**

FIELD: **Midland**

SECTION: **SW 21 NW 21**

COUNTY: **Midland**

CONTRACTOR: **Donna #1**

DATE: **1-16-2013**

WELL NO: **5075**

TYPE: **MUD OIL**

FORMATION: **Permian**

SHAPE: **180**

DEPTH: **1484**

LOG: **1484**

LOG: **1484**

LOG: **1484**

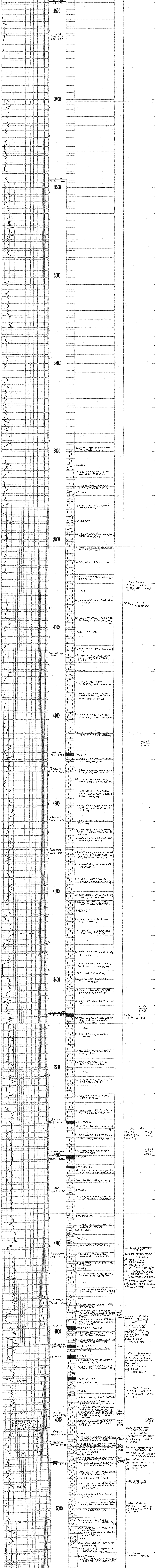
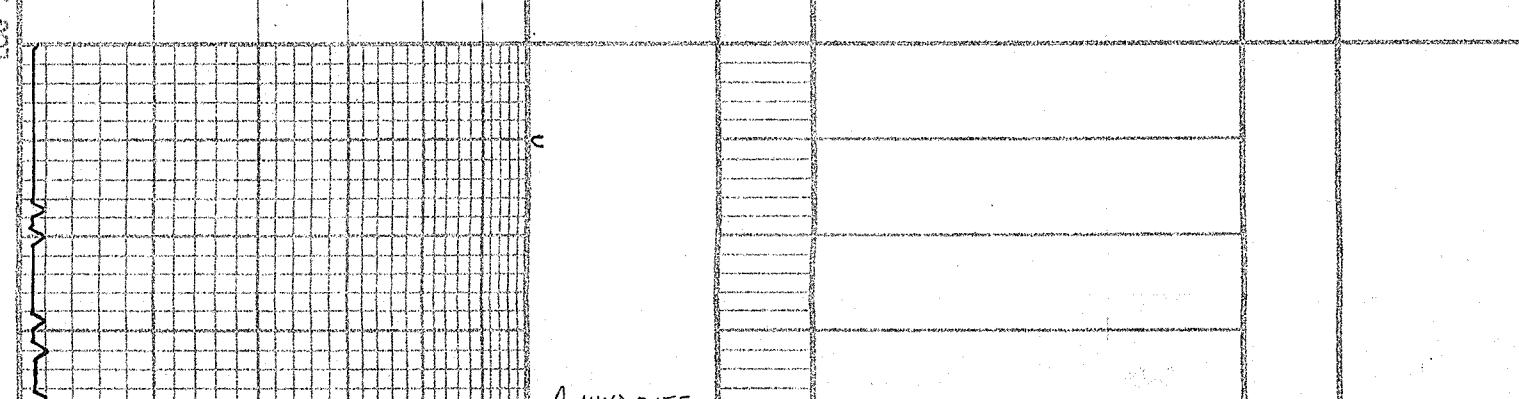
LOG: **1484**

LOG: **1484**

LOG: **1484**

LOG: **1484**

## LEGEND



MUD CHECK VIS 42 WT 8.9 CLR 3,200 LCM 3 FILT 9.2

7:AM 1-10-13 DRLG @ 3973'

MUD CHECK VIS 45 WT 9.0 CLR 4

7:AM 1-11-13 DRLG @ 4443

MUD CHECK VIS 48 WT 9.3 CLR 7,000 LCM 2 FILT 6.4

MUD CHECK VIS 49 WT 9.2 CLR 2

MUD CHECK VIS 53 WT 9.3 CLR 2

20 STAM SHORT TRIP TIGHT

DST# 1 4758-4794

IP: BOB 1 1/2 MIN

REC: 360' CO (885' API)

FP: 1285-1275 (BUNNED)

HP: 2287-2263

STRAP 4800-24

7:AM 1-12-13

MUD CHECK VIS 50 WT 9.3 CLR 5,500 LCM 2 FILT 8.0

DST# 2 4911-4937

REC: 10' M

FP: 1122-1224

HP: 2287-2285

MUD CHECK VIS 54 WT 9.3 CLR 6,200 LCM 3 FILT 8.8

7:AM 1-15-2013

MUD CHECK VIS 54 WT 9.3 CLR 6,200 LCM 3 FILT 8.8

RIG DOWN SWIVEL PACKING