

TRILOBITE TESTING, INC.

DRILL STEM TEST REPORT

Stabb Oil Co.
1607 Hopewell Rd.
Hays Ks. 67601
ATTN: Randy K

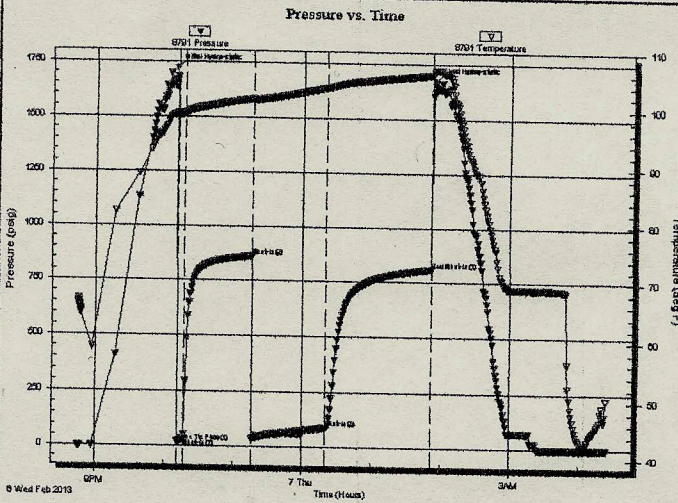
33 12s 19w
Mary-Ann #1
Job Ticket: 48041 DST#: 1
Test Start: 2013.02.06 @ 20:45:00

GENERAL INFORMATION:

Formation: **Tor.-LKC-D**
Deviated: **No** Whipstock: ft (KB)
Time Tool Opened: 22:11:30
Time Test Ended: 04:23:30
Interval: **3411.00 ft (KB) To 3520.00 ft (KB) (TVD)**
Total Depth: **3520.00 ft (KB) (TVD)**
Hole Diameter: **7.88 inches** Hole Condition: **Good**
Test Type: **Conventional Bottom Hole (Initial)**
Tester: **Chuck Kreutzer Jr.**
Unit No: **61**
Reference Elevations: **2129.00 ft (KB)**
2124.00 ft (CF)
KB to GR/CF: **5.00 ft**

Serial #: 8791 **Inside**
Press@RunDepth: **31.27 psig @ 3412.00 ft (KB)**
Start Date: **2013.02.06** End Date: **2013.02.07**
Start Time: **20:45:00** End Time: **04:23:30**
Capacity: **8000.00 psig**
Last Calib.: **2013.02.07**
Time On Btm: **2013.02.06 @ 22:10:00**
Time Off Btm: **2013.02.07 @ 01:54:00**

TEST COMMENT: IF: Weak blow, Blow started at 1/2in. and built to 1 in. over 5 mins.
IS: No blow back
FF: Weak blow, Built to B.O.B in 60 mins.
FI: No blow back over 90 mins.



PRESSURE SUMMARY

Time (Min.)	Pressure (psig)	Temp (deg F)	Annotation
0	1717.98	99.00	Initial Hydro-static
2	19.87	98.71	Open To Flow (1)
7	31.27	99.13	Shut-in(1)
66	862.31	101.69	Shut-in(2)
67	35.65	101.39	Open To Flow (2)
131	89.83	103.68	Shut-in(3)
222	807.94	106.01	End Shut-in(1)
224	1667.86	106.82	Final Hydro-static

Recovery

Length (ft)	Description	Volume (bbl)
63.00	25% to 75%	0.32
189.00	35% to 65%	0.95

Gas Rates

	Choke (Inches)	Pressure (psig)	Gas Rate (Mcf/d)