

**TRILOBITE
TESTING, INC.**

DRILL STEM TEST REPORT

Stabb Oil Co.
1607Hopewell Rd.
Hays Ks. 67601
ATTN: Randy K

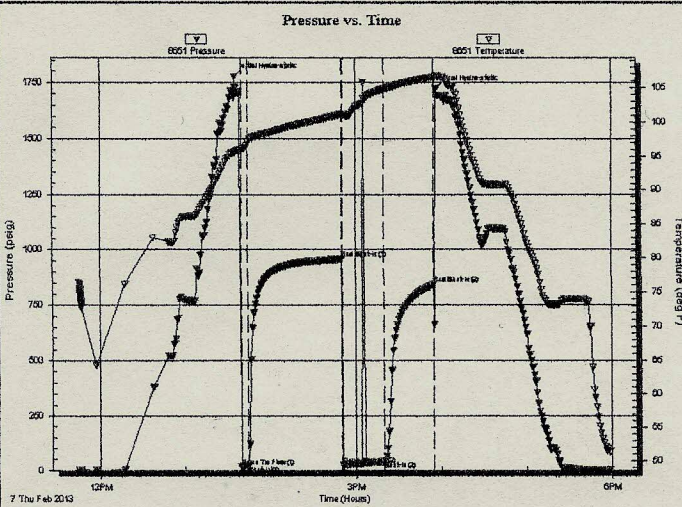
33 12s 19w
Mary-Ann #1
Job Ticket: 48042 **DST#: 2**
Test Start: 2013.02.07 @ 11:45:00

GENERAL INFORMATION:

Formation: **LKC-E-F**
Deviated: **No** Whipstock: **ft (KB)**
Time Tool Opened: 13:39:30
Time Test Ended: 17:58:30
Test Type: **Conventional Bottom Hole (Reset)**
Tester: **Chuck Kreutzer Jr.**
Unit No: **61**
Interval: **3520.00 ft (KB) To 3550.00 ft (KB) (TVD)**
Total Depth: **3550.00 ft (KB) (TVD)**
Hole Diameter: **7.88 inches**Hole Condition: **Good**
Reference Elevations: **2129.00 ft (KB)**
2124.00 ft (CF)
KB to GR/CF: **5.00 ft**

Serial #: 8651 **Outside**
Press@RunDepth: **41.13 psig @ 3521.00 ft (KB)** Capacity: **8000.00 psig**
Start Date: **2013.02.07** End Date: **2013.02.07** Last Calib.: **2013.02.07**
Start Time: **11:45:00** End Time: **17:58:30** Time On Btm: **2013.02.07 @ 13:35:00**
Time Off Btm: **2013.02.07 @ 15:56:30**

TEST COMMENT: IF: Weak blow, 1/4 in. died back to surface.
IS: No blow back
FF: No blow, flushed tool 10 mins. in to flow. Weak blow died
FS: No blow back



PRESSURE SUMMARY

| Time (Min.) | Pressure (psig) | Temp (deg F) | Annotation |
|-------------|-----------------|--------------|----------------------|
| 0 | 1776.90 | 95.58 | Initial Hydro-static |
| 5 | 16.73 | 95.76 | Open To Flow (1) |
| 10 | 22.16 | 97.08 | Shut-in(1) |
| 76 | 957.18 | 101.16 | End Shut-in(1) |
| 76 | 23.65 | 100.69 | Open To Flow (2) |
| 105 | 41.13 | 104.79 | Shut-in(2) |
| 140 | 842.79 | 106.57 | End Shut-in(2) |
| 142 | 1720.48 | 106.75 | Final Hydro-static |

Recovery

| Length (ft) | Description | Volume (bbl) |
|-------------|-------------|--------------|
| | | |
| | | |
| | | |
| | | |
| | | |
| | | |

* Recovery from multiple tests

Gas Rates

| | Choke (inches) | Pressure (psig) | Gas Rate (Mcf/d) |
|--|----------------|-----------------|------------------|
| | | | |