

TRILOBITE TESTING, INC.

DRILL STEM TEST REPORT

Staab Oil Co.

33 12s 19w Ellis, KS

1607Hopewell Rd.
Hays KS 67601

Mary-Ann #1

Job Ticket: 51586

DST#: 3

ATTN: Randy Killian

Test Start: 2013.02.08 @ 09:02:00

GENERAL INFORMATION:

Formation: KC "H-L"

Deviated: No Whipstock: ft (KB)

Time Tool Opened: 10:21:30

Time Test Ended: 16:18:30

Test Type: Conventional Bottom Hole (Reset)

Tester: Cody Bloedorn

Unit No: 44

Interval: 3580.00 ft (KB) To 3700.00 ft (KB) (TVD)

Total Depth: 3700.00 ft (KB) (TVD)

Hole Diameter: 7.88 inches Hole Condition: Fair

Reference Elevations: 2129.00 ft (KB)

2124.00 ft (CF)

KB to GR/CF: 5.00 ft

Serial #: 8679

Outside

Press@RunDepth: 274.85 psig @ 3681.00 ft (KB)

Capacity: 8000.00 psig

Start Date: 2013.02.08

End Date:

2013.02.08

Last Calib.:

2013.02.08

Start Time: 09:02:00

End Time:

16:18:30

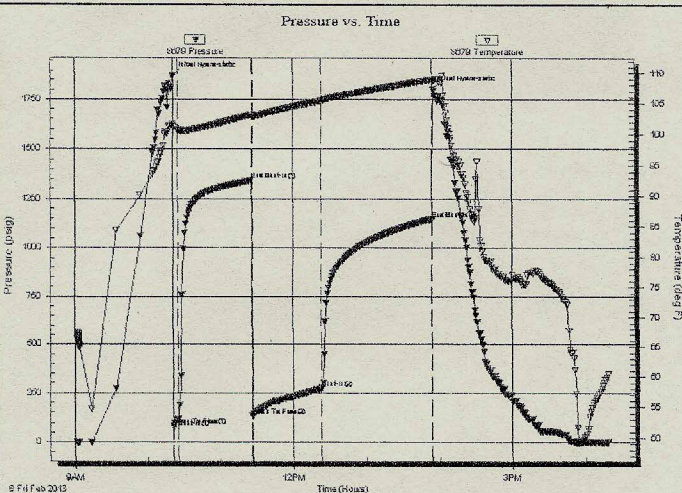
Time On Btm:

2013.02.08 @ 10:21:00

Time Off Btm:

2013.02.08 @ 13:55:00

TEST COMMENT: 05 - IF- 9" blow
60 - IS- No blow back
60 - FF- B.O.B. in 4 Minutes
90 - FS- B.O.B. in 9 Minutes.



PRESSURE SUMMARY

Time (Min.)	Pressure (psig)	Temp (deg F)	Annotation
0	1871.40	101.63	Initial Hydro-static
1	81.64	101.23	Open To Flow (1)
5	118.22	100.73	Shut-In(1)
65	1345.21	103.22	End Shut-In(1)
66	132.70	102.85	Open To Flow (2)
123	274.85	105.49	Shut-In(2)
214	1147.56	109.01	End Shut-In(2)
214	1801.31	108.90	Final Hydro-static

Recovery

Length (ft)	Description	Volume (bbl)
124.00	HOCM, 60% M, 40% O	0.63
496.00	GO, 30% G, 70% O	3.87
62.00	GO, 5% G, 95% O	0.87
62.00	OCM, 30% O, 70% M	0.87
0.00	124' of G.I.P.	0.00

* Recovery from multiple tests

Gas Rates

	Choke (Inches)	Pressure (psig)	Gas Rate (Mcf/d)

Trilobite Testing, Inc

Ref. No: 51586

Printed: 2013.02.08 @ 16:26:13