

KEVIN L. KESSLER
CONSULTING PETROLEUM GEOLOGIST
(316) 522-7338

OPERATOR : MULL DRILLING CO INC.
LEASE : TILLITSON WELL # : 1 - 7
LOCATION : 1208' FNL & 769' FEL
SEC: 07 TWP : 17 S RGE : 24 W
COUNTY : NESS STATE : KANSAS

ELEVATION
KB : 2462
GL : 2457
MEASUREMENTS FROM
KB

CONTRACTOR : W W DRILLING RIG # 10
COMM : 01 / 02 / 2013 **COMP : 02 / 09 / 2013**
RTD : 4775 **LOG TD : 4774**
SAMPLES SAVED FROM : 3700 TO: RTD
GEOLOGICAL SUPERVISION FROM : 3700 TO : RTD
MUD UP : 3600 TYPE MUD : CHEMICAL

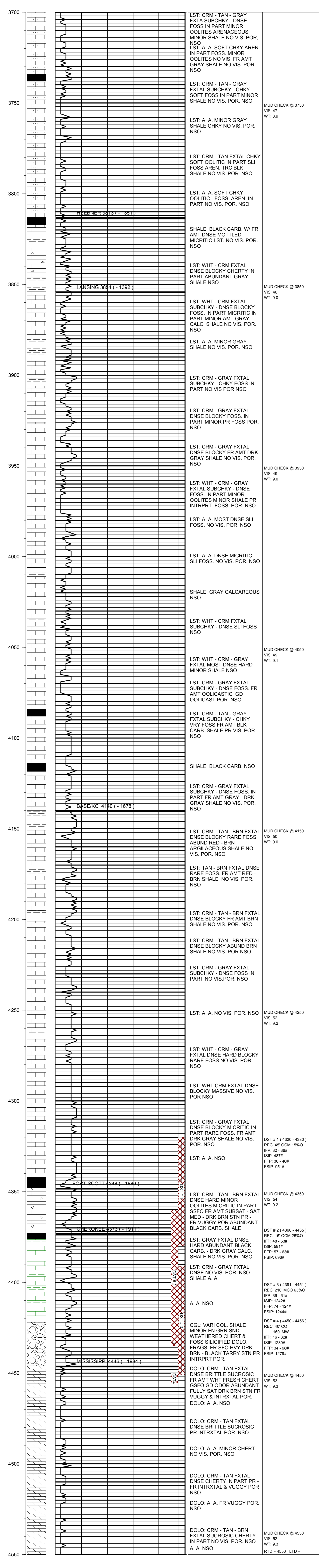
CASING RECORD
SURFACE :
8 5/8" @ 225'
PRODUCTION :
5 1/2" @ 4550

FORMATION	TOP	LOG	DATUM	TOP	SAMPLE	DATUM	STRUCT. COMP.
HEEBNER	3813		-1351	3813		-1351	-03
LANSING	3854		-1392	3854		-1392	-01
BASE/KC	4140		-1678	4140		-1678	-02
FORT SCOTT	4348		-1886	4348		-1886	-04
CHEROKEE	4373		-1911	4373		-1911	-03
MISSISSIPPI	4446		-1984	4446		-1984	FLAT

ELECTRICAL SURVEYS:
CDL/CNL
DIL
MICRO
SONIC

REFERENCE WELL FOR STRUCTURAL COMPARISON :

CRAWFORD OIL & GAS # 1-7 TILLITSON SEC 07 - T 17 S - R 32 W NESS COUNTY KANSAS



COMMENTS:

5 1/2" PRODUCTION CASING WAS SET TO FURTHER EVALUATE THE PRODUCTIVITY OF THIS WELL

KEVIN L. KESSLER