



**TRILOBITE
TESTING, INC.**

DRILL STEM TEST REPORT

Shakespeare Oil Co., Inc.

S26-16s-34w Scott, KS

202 W. Main St.
Salem, IL 62881

Janzen #2-26

Job Ticket: 51290

DST#: 1

ATTN: Tim Priest

Test Start: 2013.03.06 @ 22:17:00

GENERAL INFORMATION:

Formation: **LKC 'H'**

Deviated: No Whipstock: ft (KB)

Time Tool Opened: 01:04:00

Time Test Ended: 06:37:09

Test Type: Conventional Bottom Hole (Initial)

Tester: Chuck Smith

Unit No: 62

Interval: 4214.00 ft (KB) To 4245.00 ft (KB) (TVD)

Reference Elevations: 3125.00 ft (KB)

Total Depth: 4245.00 ft (KB) (TVD)

3115.00 ft (CF)

Hole Diameter: 7.88 inches Hole Condition: Good

KB to GR/CF: 10.00 ft

Serial #: 8018

Inside

Press @ Run Depth: 71.86 psig @ 4217.00 ft (KB)

Capacity: 8000.00 psig

Start Date: 2013.03.06

End Date:

2013.03.07

Last Calib.: 2013.03.07

Start Time: 22:17:02

End Time:

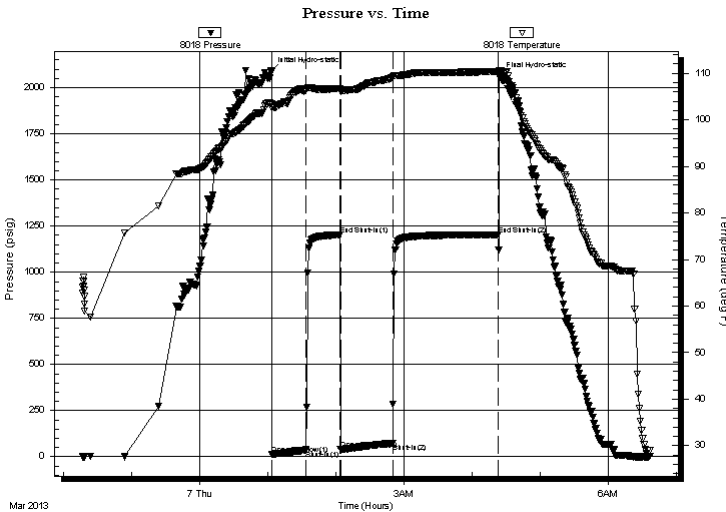
06:37:10

Time On Btm: 2013.03.07 @ 01:02:40

Time Off Btm: 2013.03.07 @ 04:24:09

TEST COMMENT: 2" Blow.
Weak return.
2 1/2" Blow.
Surface return.

PRESSURE SUMMARY



Time (Min.)	Pressure (psig)	Temp (deg F)	Annotation
0	2085.16	103.49	Initial Hydro-static
2	13.60	102.62	Open To Flow (1)
32	37.17	106.42	Shut-In(1)
62	1201.96	106.70	End Shut-In(1)
62	38.73	106.00	Open To Flow (2)
108	71.86	109.03	Shut-In(2)
200	1203.09	110.36	End Shut-In(2)
202	2060.53	110.61	Final Hydro-static

Recovery

Length (ft)	Description	Volume (bbl)
0.00	RW: .465 @ 31 Degrees F = 35000 PPM	0.00
60.00	MW 30m 70w	0.30
70.00	M 100m	0.44

Gas Rates

Choke (inches)	Pressure (psig)	Gas Rate (Mcf/d)



**TRILOBITE
TESTING, INC.**

DRILL STEM TEST REPORT

FLUID SUMMARY

Shakespeare Oil Co., Inc.

S26-16s-34w Scott, KS

202 W. Main St.
Salem, IL 62881

Janzen #2-26

Job Ticket: 51290

DST#: 1

ATTN: Tim Priest

Test Start: 2013.03.06 @ 22:17:00

Mud and Cushion Information

Mud Type: Gel Chem

Cushion Type:

Oil API:

deg API

Mud Weight: 9.00 lb/gal

Cushion Length:

ft

Water Salinity:

35000 ppm

Viscosity: 54.00 sec/qt

Cushion Volume:

bbbl

Water Loss: 6.40 in³

Gas Cushion Type:

Resistivity: ohm.m

Gas Cushion Pressure:

psig

Salinity: 4000.00 ppm

Filter Cake: 1.00 inches

Recovery Information

Recovery Table

Length ft	Description	Volume bbl
0.00	RW: .465 @ 31 Degrees F = 35000 PPM	0.000
60.00	MW 30m 70w	0.295
70.00	M 100m	0.435

Total Length: 130.00 ft Total Volume: 0.730 bbl

Num Fluid Samples: 0

Num Gas Bombs: 0

Serial #:

Laboratory Name:

Laboratory Location:

Recovery Comments:

Pressure vs. Time

