



**TRILOBITE
TESTING, INC.**

DRILL STEM TEST REPORT

Shakespeare Oil Co., Inc.

S26-16s-34w Scott, KS

202 W. Main St.
Salem, IL 62881

Janzen #2-26

Job Ticket: 51291

DST#: 2

ATTN: Tim Priest

Test Start: 2013.03.08 @ 01:06:00

GENERAL INFORMATION:

Formation: **LKC 'I'**

Deviated: No Whipstock: ft (KB)

Time Tool Opened: 03:28:30

Time Test Ended: 08:41:30

Test Type: Conventional Bottom Hole (Reset)

Tester: Chuck Smith

Unit No: 62

Interval: 4252.00 ft (KB) To 4290.00 ft (KB) (TVD)

Reference Elevations: 3125.00 ft (KB)

Total Depth: 4290.00 ft (KB) (TVD)

3115.00 ft (CF)

Hole Diameter: 7.88 inches Hole Condition: Good

KB to GR/CF: 10.00 ft

Serial #: 8018

Inside

Press @ Run Depth: 25.18 psig @ 4255.00 ft (KB)

Capacity: 8000.00 psig

Start Date: 2013.03.08

End Date:

2013.03.08

Last Calib.: 2013.03.08

Start Time: 01:06:02

End Time:

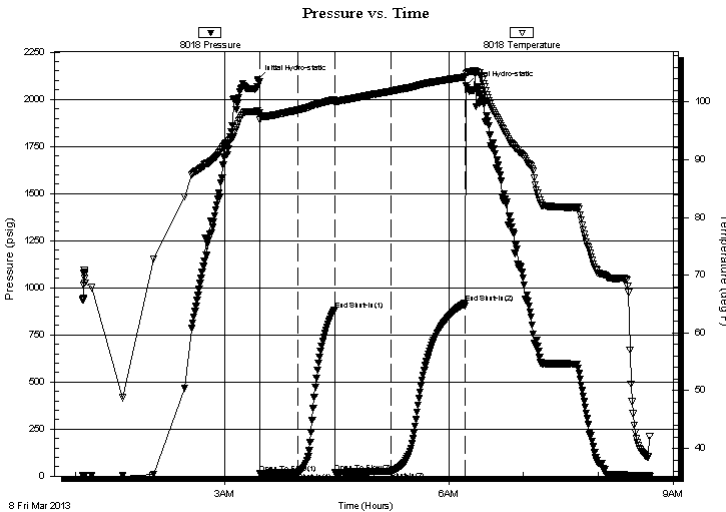
08:41:30

Time On Btm: 2013.03.08 @ 03:26:40

Time Off Btm: 2013.03.08 @ 06:13:40

TEST COMMENT: 1/2" Blow .
No return.
Surface blow .
No return.

PRESSURE SUMMARY



Time (Min.)	Pressure (psig)	Temp (deg F)	Annotation
0	2103.65	98.22	Initial Hydro-static
2	14.53	96.93	Open To Flow (1)
32	19.15	98.60	Shut-In(1)
62	883.47	100.40	End Shut-In(1)
62	20.96	99.86	Open To Flow (2)
107	25.18	101.86	Shut-In(2)
166	917.94	104.31	End Shut-In(2)
167	2072.00	104.81	Final Hydro-static

Recovery

Length (ft)	Description	Volume (bbl)
2.00	O 100o	0.01
8.00	M 100m	0.04

* Recovery from multiple tests

Gas Rates

	Choke (inches)	Pressure (psig)	Gas Rate (Mcf/d)



**TRILOBITE
TESTING, INC.**

DRILL STEM TEST REPORT

FLUID SUMMARY

Shakespeare Oil Co., Inc.

S26-16s-34w Scott, KS

202 W. Main St.
Salem, IL 62881

Janzen #2-26

Job Ticket: 51291

DST#: 2

ATTN: Tim Priest

Test Start: 2013.03.08 @ 01:06:00

Mud and Cushion Information

Mud Type: Gel Chem

Cushion Type:

Oil API:

19 deg API

Mud Weight: 9.00 lb/gal

Cushion Length:

ft

Water Salinity:

ppm

Viscosity: 50.00 sec/qt

Cushion Volume:

bbbl

Water Loss: 7.20 in³

Gas Cushion Type:

Resistivity: ohm.m

Gas Cushion Pressure:

psig

Salinity: 4400.00 ppm

Filter Cake: 1.00 inches

Recovery Information

Recovery Table

Length ft	Description	Volume bbl
2.00	O 100o	0.010
8.00	M 100m	0.039

Total Length: 10.00 ft

Total Volume: 0.049 bbl

Num Fluid Samples: 0

Num Gas Bombs: 0

Serial #:

Laboratory Name:

Laboratory Location:

Recovery Comments: API: 19 @

