



TRILOBITE TESTING, INC.

DRILL STEM TEST REPORT

Shakespeare Oil Co., Inc.

S26-16s-34w Scott, KS

202 W. Main St.
Salem, IL 62881

Janzen #2-26

Job Ticket: 51292

DST#: 3

ATTN: Tim Priest

Test Start: 2013.03.09 @ 04:49:00

GENERAL INFORMATION:

Formation: **Marmaton**

Deviated: No Whipstock: ft (KB)

Time Tool Opened: 07:25:00

Time Test Ended: 12:12:39

Test Type: Conventional Bottom Hole (Reset)

Tester: Chuck Smith

Unit No: 62

Interval: 4413.00 ft (KB) To 4460.00 ft (KB) (TVD)

Reference Elevations: 3125.00 ft (KB)

Total Depth: 4460.00 ft (KB) (TVD)

3115.00 ft (CF)

Hole Diameter: 7.88 inches Hole Condition: Good

KB to GR/CF: 10.00 ft

Serial #: 8018

Inside

Press @ Run Depth: 62.66 psig @ 4415.00 ft (KB)

Capacity: 8000.00 psig

Start Date: 2013.03.09

End Date:

2013.03.09

Last Calib.:

2013.03.09

Start Time:

04:49:02

End Time:

12:12:40

Time On Btm:

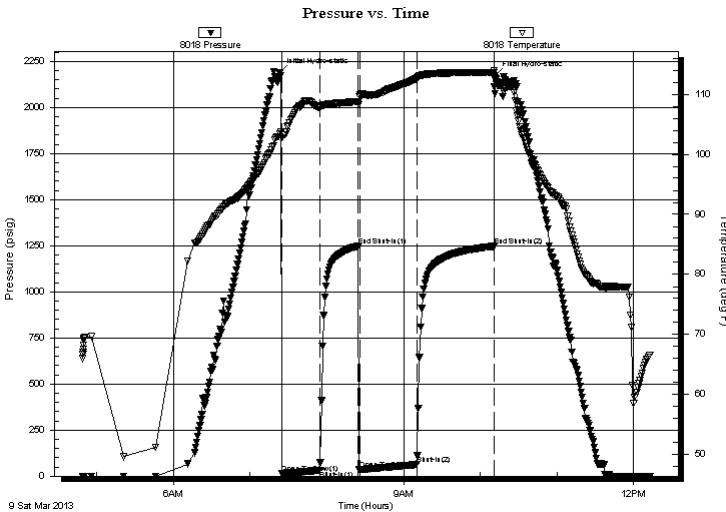
2013.03.09 @ 07:22:50

Time Off Btm:

2013.03.09 @ 10:11:50

TEST COMMENT: 1 1/2" Blow .
No return.
2 1/4" Blow .
No return.

PRESSURE SUMMARY



Time (Min.)	Pressure (psig)	Temp (deg F)	Annotation
0	2188.51	102.93	Initial Hydro-static
3	14.43	102.78	Open To Flow (1)
32	32.12	107.82	Shut-In(1)
62	1249.28	108.77	End Shut-In(1)
63	35.45	109.58	Open To Flow (2)
108	62.66	112.58	Shut-In(2)
168	1247.56	113.61	End Shut-In(2)
169	2175.04	112.43	Final Hydro-static

Recovery

Length (ft)	Description	Volume (bbl)
0.00	RW: . 223 @ 63 Degrees F = 37000 PPM	0.00
60.00	MW 25m 75w	0.30
55.00	OSWM 15w 85m	0.27

Gas Rates

Choke (inches)	Pressure (psig)	Gas Rate (Mcf/d)

* Recovery from multiple tests



**TRILOBITE
TESTING, INC.**

DRILL STEM TEST REPORT

FLUID SUMMARY

Shakespeare Oil Co., Inc.

S26-16s-34w Scott, KS

202 W. Main St.
Salem, IL 62881

Janzen #2-26

Job Ticket: 51292

DST#: 3

ATTN: Tim Priest

Test Start: 2013.03.09 @ 04:49:00

Mud and Cushion Information

Mud Type: Gel Chem

Cushion Type:

Oil API:

deg API

Mud Weight: 9.00 lb/gal

Cushion Length:

ft

Water Salinity:

37000 ppm

Viscosity: 54.00 sec/qt

Cushion Volume:

bbbl

Water Loss: 7.60 in³

Gas Cushion Type:

Resistivity: ohm.m

Gas Cushion Pressure:

psig

Salinity: 5000.00 ppm

Filter Cake: 1.00 inches

Recovery Information

Recovery Table

Length ft	Description	Volume bbl
0.00	RW: . 223 @ 63 Degrees F = 37000 PPM	0.000
60.00	MW 25m 75w	0.295
55.00	OSWM 15w 85m	0.270

Total Length: 115.00 ft

Total Volume: 0.565 bbl

Num Fluid Samples: 0

Num Gas Bombs: 0

Serial #:

Laboratory Name:

Laboratory Location:

Recovery Comments:

Serial #: 8018

Inside

Shakespeare Oil Co., Inc.

Janzen #2-26

DST Test Number: 3

