



**TRILOBITE
TESTING, INC.**

DRILL STEM TEST REPORT

Shakespeare Oil Co., Inc.

S26-16s-34w Scott, KS

202 W. Main St.
Salem, IL 62881

Janzen #2-26

Job Ticket: 51293

DST#: 4

ATTN: Tim Priest

Test Start: 2013.03.09 @ 20:48:00

GENERAL INFORMATION:

Formation: **Altamont 'A'**

Deviated: No Whipstock: ft (KB)

Time Tool Opened: 00:04:20

Time Test Ended: 06:41:49

Test Type: Conventional Bottom Hole (Reset)

Tester: Chuck Smith

Unit No: 62

Interval: 4459.00 ft (KB) To 4475.00 ft (KB) (TVD)

Reference Elevations: 3125.00 ft (KB)

Total Depth: 4475.00 ft (KB) (TVD)

3115.00 ft (CF)

Hole Diameter: 7.88 inches Hole Condition: Good

KB to GR/CF: 10.00 ft

Serial #: 8018

Inside

Press @ Run Depth: 86.72 psig @ 4462.00 ft (KB)

Capacity: 8000.00 psig

Start Date: 2013.03.09

End Date: 2013.03.10

Last Calib.: 2013.03.10

Start Time: 20:48:02

End Time: 06:41:49

Time On Btm: 2013.03.10 @ 00:01:50

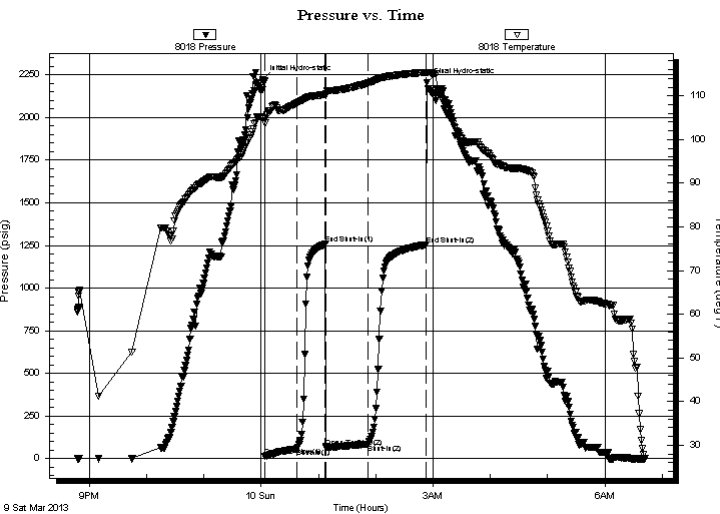
Time Off Btm: 2013.03.10 @ 02:54:00

TEST COMMENT: 6" Blow . Outside recorder malfunctioned

Surface return.

11" Blow .

Surface return.



PRESSURE SUMMARY

| Time (Min.) | Pressure (psig) | Temp (deg F) | Annotation |
|-------------|-----------------|--------------|----------------------|
| 0 | 2220.56 | 105.06 | Initial Hydro-static |
| 3 | 15.03 | 103.74 | Open To Flow (1) |
| 36 | 58.81 | 108.43 | Shut-In(1) |
| 66 | 1257.56 | 110.30 | End Shut-In(1) |
| 67 | 68.44 | 110.48 | Open To Flow (2) |
| 111 | 86.72 | 112.94 | Shut-In(2) |
| 171 | 1254.71 | 115.40 | End Shut-In(2) |
| 173 | 2203.34 | 115.38 | Final Hydro-static |

Recovery

| Length (ft) | Description | Volume (bbl) |
|-------------|-------------|--------------|
| 60.00 | OCM 30o 70m | 0.30 |
| 150.00 | GO 30g 70o | 1.56 |
| 0.00 | 30 feet GIP | 0.00 |
| | | |
| | | |

* Recovery from multiple tests

Gas Rates

| | Choke (inches) | Pressure (psig) | Gas Rate (Mcf/d) |
|--|----------------|-----------------|------------------|
| | | | |



**TRILOBITE
TESTING, INC.**

DRILL STEM TEST REPORT

FLUID SUMMARY

Shakespeare Oil Co., Inc.

S26-16s-34w Scott, KS

202 W. Main St.
Salem, IL 62881

Janzen #2-26

Job Ticket: 51293

DST#: 4

ATTN: Tim Priest

Test Start: 2013.03.09 @ 20:48:00

Mud and Cushion Information

Mud Type: Gel Chem

Cushion Type:

Oil API:

32 deg API

Mud Weight: 9.00 lb/gal

Cushion Length:

ft

Water Salinity:

ppm

Viscosity: 53.00 sec/qt

Cushion Volume:

bbbl

Water Loss: 7.99 in³

Gas Cushion Type:

Resistivity: ohm.m

Gas Cushion Pressure:

psig

Salinity: 5000.00 ppm

Filter Cake: 1.00 inches

Recovery Information

Recovery Table

| Length ft | Description | Volume bbbl |
|--------------|-------------|----------------|
| 60.00 | OCM 30o 70m | 0.295 |
| 150.00 | GO 30g 70o | 1.558 |
| 0.00 | 30 feet GIP | 0.000 |

Total Length: 210.00 ft Total Volume: 1.853 bbl

Num Fluid Samples: 0

Num Gas Bombs: 0

Serial #:

Laboratory Name:

Laboratory Location:

Recovery Comments: API 33 @ 70 Degrees F = 32

Pressure vs. Time

