



**TRILOBITE
TESTING, INC.**

DRILL STEM TEST REPORT

Shakespeare Oil Co., Inc.

S26-16s-34w Scott, KS

202 W. Main St.
Salem, IL 62881

Janzen #2-26

Job Ticket: 51295

DST#: 6

ATTN: Tim Priest

Test Start: 2013.03.11 @ 15:04:00

GENERAL INFORMATION:

Formation: **Altamont 'C'**

Deviated: No Whipstock: ft (KB)

Time Tool Opened: 17:09:40

Time Test Ended: 22:36:09

Test Type: Conventional Bottom Hole (Reset)

Tester: Chuck Smith

Unit No: 62

Interval: 4498.00 ft (KB) To 4525.00 ft (KB) (TVD)

Reference Elevations: 3125.00 ft (KB)

Total Depth: 4525.00 ft (KB) (TVD)

3115.00 ft (CF)

Hole Diameter: 7.88 inches Hole Condition: Good

KB to GR/CF: 10.00 ft

Serial #: 8018

Inside

Press @ Run Depth: 223.44 psig @ 4501.00 ft (KB)

Capacity: 8000.00 psig

Start Date: 2013.03.11

End Date:

2013.03.11

Last Calib.:

2013.03.11

Start Time: 15:04:02

End Time:

22:36:10

Time On Btm:

2013.03.11 @ 17:06:50

Time Off Btm:

2013.03.11 @ 19:26:50

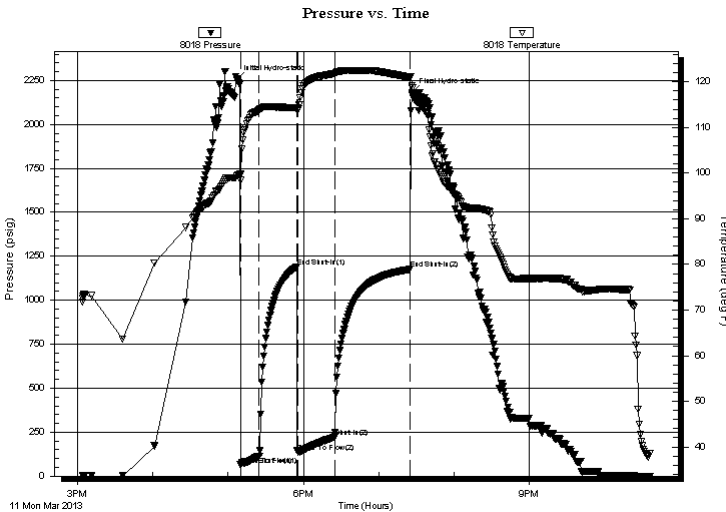
TEST COMMENT: B.O.B. @ 2 1/2 min.

B.O.B. @ 17 min.

B.O.B. @ 4 min.

B.O.B. @ 33 min.

PRESSURE SUMMARY



Time (Min.)	Pressure (psig)	Temp (deg F)	Annotation
0	2257.76	99.44	Initial Hydro-static
3	63.61	98.41	Open To Flow (1)
18	114.48	113.88	Shut-In(1)
48	1189.87	114.38	End Shut-In(1)
49	137.75	113.88	Open To Flow (2)
78	223.44	121.85	Shut-In(2)
139	1176.46	120.97	End Shut-In(2)
140	2179.39	118.65	Final Hydro-static

Recovery

Length (ft)	Description	Volume (bbl)
183.00	GMCO 20g 35m 55o	1.47
186.00	GO 20g 80o	2.61
248.00	GO 30g 70o	3.48
93.00	GO 15g 85o	1.30
0.00	1085' GIP	0.00

* Recovery from multiple tests

Gas Rates

Choke (inches)	Pressure (psig)	Gas Rate (Mcf/d)



**TRILOBITE
TESTING, INC.**

DRILL STEM TEST REPORT

FLUID SUMMARY

Shakespeare Oil Co., Inc.

S26-16s-34w Scott, KS

202 W. Main St.
Salem, IL 62881

Janzen #2-26

Job Ticket: 51295

DST#: 6

ATTN: Tim Priest

Test Start: 2013.03.11 @ 15:04:00

Mud and Cushion Information

Mud Type: Gel Chem

Cushion Type:

Oil API:

34 deg API

Mud Weight: 9.00 lb/gal

Cushion Length:

ft

Water Salinity:

ppm

Viscosity: 55.00 sec/qt

Cushion Volume:

bbbl

Water Loss: 9.59 in³

Gas Cushion Type:

Resistivity: ohm.m

Gas Cushion Pressure:

psig

Salinity: 6200.00 ppm

Filter Cake: 1.00 inches

Recovery Information

Recovery Table

Length ft	Description	Volume bbl
183.00	GMCO 20g 35m 55o	1.474
186.00	GO 20g 80o	2.609
248.00	GO 30g 70o	3.479
93.00	GO 15g 85o	1.305
0.00	1085' GIP	0.000

Total Length: 710.00 ft Total Volume: 8.867 bbl

Num Fluid Samples: 0

Num Gas Bombs: 0

Serial #:

Laboratory Name:

Laboratory Location:

Recovery Comments: API: 32 @ 40 Degrees F = 34

Serial #: 8018

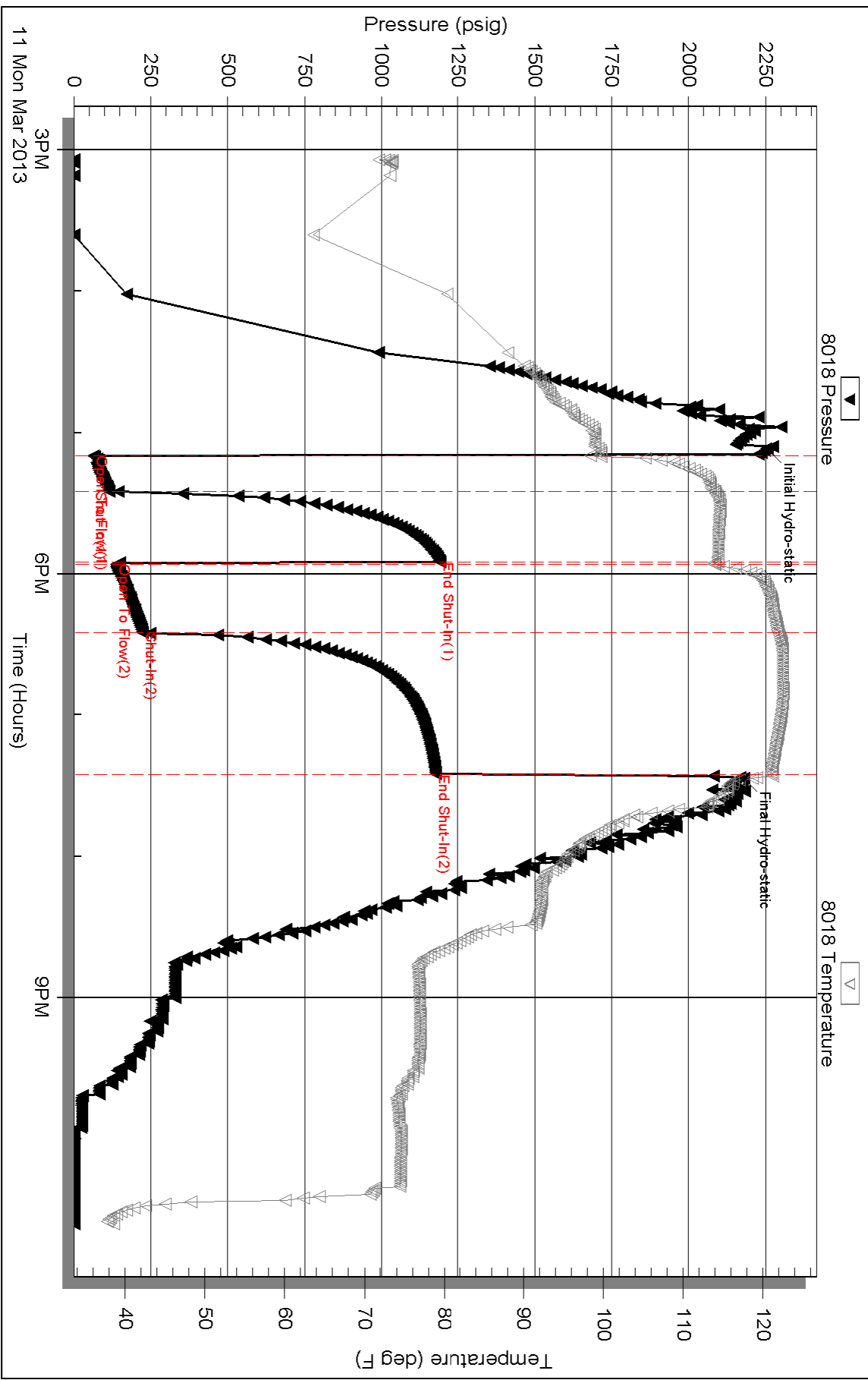
Inside

Shakespeare Oil Co., Inc.

Janzen #2-26

DST Test Number: 6

Pressure vs. Time



Triobite Testing, Inc

Ref. No: 51295

Printed: 2013.03.11 @ 23:33:57