



TRILOBITE TESTING, INC.

DRILL STEM TEST REPORT

Shakespeare Oil Co., Inc.

S26-16s-34w Scott, KS

202 W. Main St.
Salem, IL 62881

Janzen #2-26

Job Ticket: 51296

DST#: 7

ATTN: Tim Priest

Test Start: 2013.03.12 @ 12:12:00

GENERAL INFORMATION:

Formation: **Pawnee**

Deviated: No Whipstock: ft (KB)

Time Tool Opened: 14:09:30

Time Test Ended: 18:21:50

Test Type: Conventional Bottom Hole (Reset)

Tester: Chuck Smith

Unit No: 62

Interval: 4530.00 ft (KB) To 4570.00 ft (KB) (TVD)

Reference Elevations: 3125.00 ft (KB)

Total Depth: 4570.00 ft (KB) (TVD)

3115.00 ft (CF)

Hole Diameter: 7.88 inches Hole Condition: Good

KB to GR/CF: 10.00 ft

Serial #: 8018 Inside

Press @ Run Depth: 15.95 psig @ 4531.00 ft (KB)

Capacity: 8000.00 psig

Start Date: 2013.03.12

End Date: 2013.03.12

Last Calib.: 2013.03.12

Start Time: 12:12:02

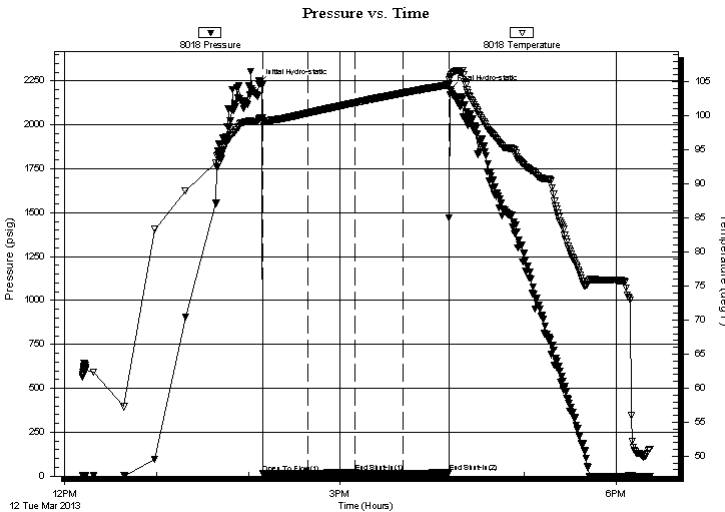
End Time: 18:21:50

Time On Btm: 2013.03.12 @ 14:07:10

Time Off Btm: 2013.03.12 @ 16:11:50

TEST COMMENT: 1/4" Blow .
No return.
No blow .
No return.

PRESSURE SUMMARY



| Time (Min.) | Pressure (psig) | Temp (deg F) | Annotation |
|-------------|-----------------|--------------|----------------------|
| 0 | 2235.61 | 99.53 | Initial Hydro-static |
| 3 | 15.55 | 98.84 | Open To Flow (1) |
| 32 | 16.74 | 100.40 | Shut-In(1) |
| 63 | 21.47 | 101.92 | End Shut-In(1) |
| 63 | 15.96 | 101.93 | Open To Flow (2) |
| 94 | 15.95 | 103.34 | Shut-In(2) |
| 124 | 20.26 | 104.58 | End Shut-In(2) |
| 125 | 2199.43 | 105.74 | Final Hydro-static |

Recovery

| Length (ft) | Description | Volume (bbl) |
|-------------|-------------|--------------|
| 1.00 | OSM 100m | 0.00 |
| | | |
| | | |
| | | |
| | | |

Gas Rates

| Choke (inches) | Pressure (psig) | Gas Rate (Mcf/d) |
|----------------|-----------------|------------------|
| | | |

* Recovery from multiple tests



**TRILOBITE
TESTING, INC.**

DRILL STEM TEST REPORT

FLUID SUMMARY

Shakespeare Oil Co., Inc.

S26-16s-34w Scott, KS

202 W. Main St.
Salem, IL 62881

Janzen #2-26

Job Ticket: 51296

DST#: 7

ATTN: Tim Priest

Test Start: 2013.03.12 @ 12:12:00

Mud and Cushion Information

Mud Type: Gel Chem

Cushion Type:

Oil API:

deg API

Mud Weight: 9.00 lb/gal

Cushion Length:

ft

Water Salinity:

ppm

Viscosity: 58.00 sec/qt

Cushion Volume:

bbbl

Water Loss: 7.20 in³

Gas Cushion Type:

Resistivity: ohm.m

Gas Cushion Pressure:

psig

Salinity: 7000.00 ppm

Filter Cake: 1.00 inches

Recovery Information

Recovery Table

| Length ft | Description | Volume bbl |
|--------------|-------------|---------------|
| 1.00 | OSM 100m | 0.005 |

Total Length: 1.00 ft Total Volume: 0.005 bbl

Num Fluid Samples: 0

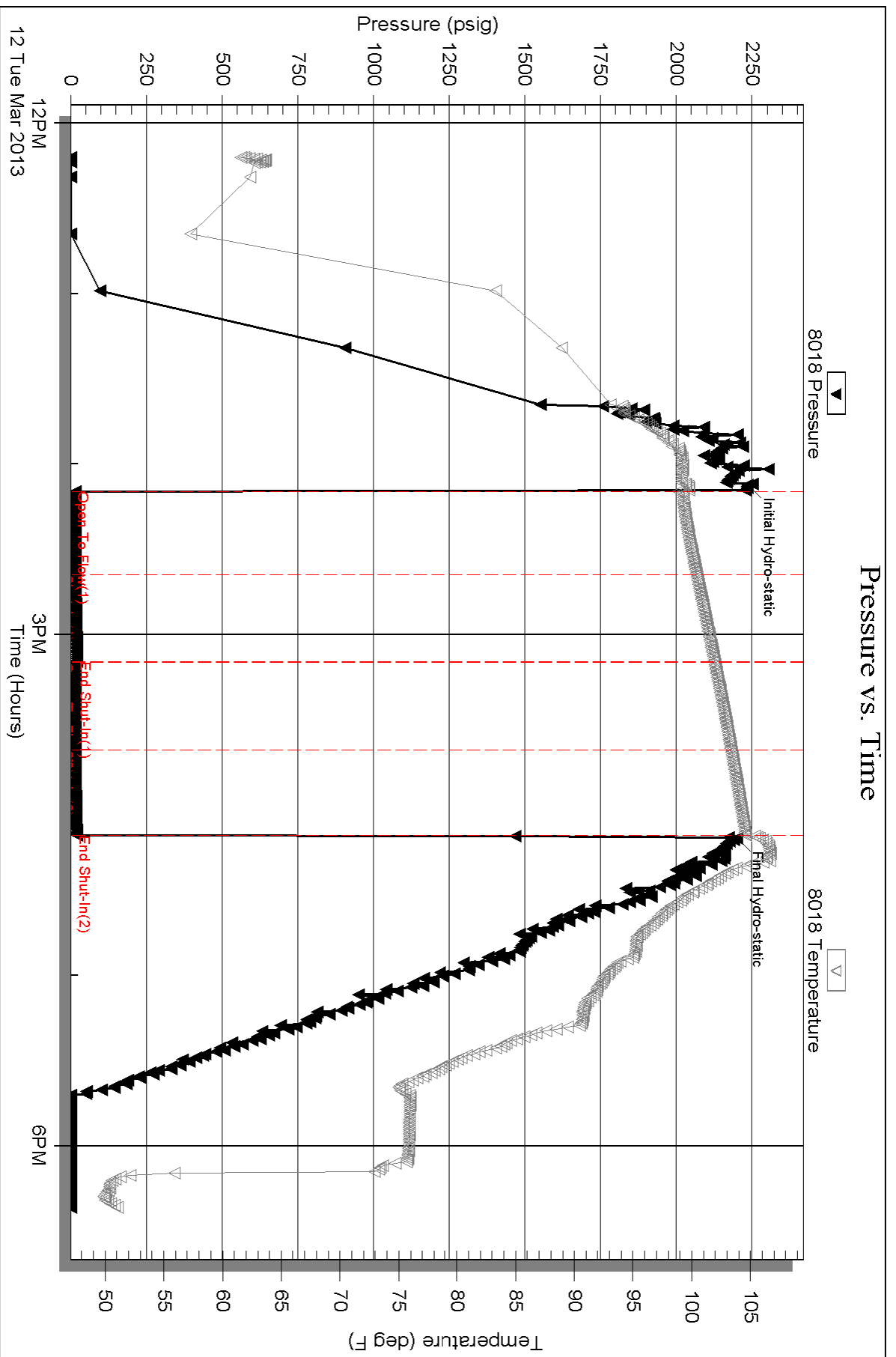
Num Gas Bombs: 0

Serial #:

Laboratory Name:

Laboratory Location:

Recovery Comments:



Serial #: 6751

Outside Shakespeare Oil Co., Inc.

Janzen #2-26

DST Test Number: 7

