

T21S, R7W, 6th P.M.

SGOMI

Well location, RANDOLPH 2107 #31-1H, located as shown in the NE 1/4 NE 1/4 of Section 31, T21S, R7W, 6th P.M., Rice County, Kansas.

BASIS OF ELEVATION

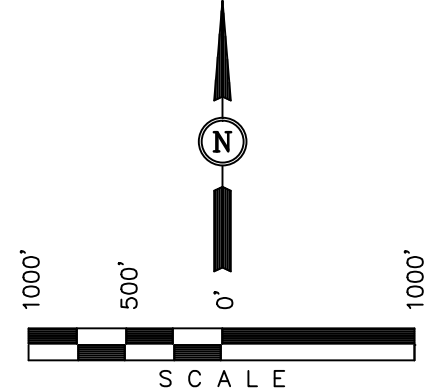
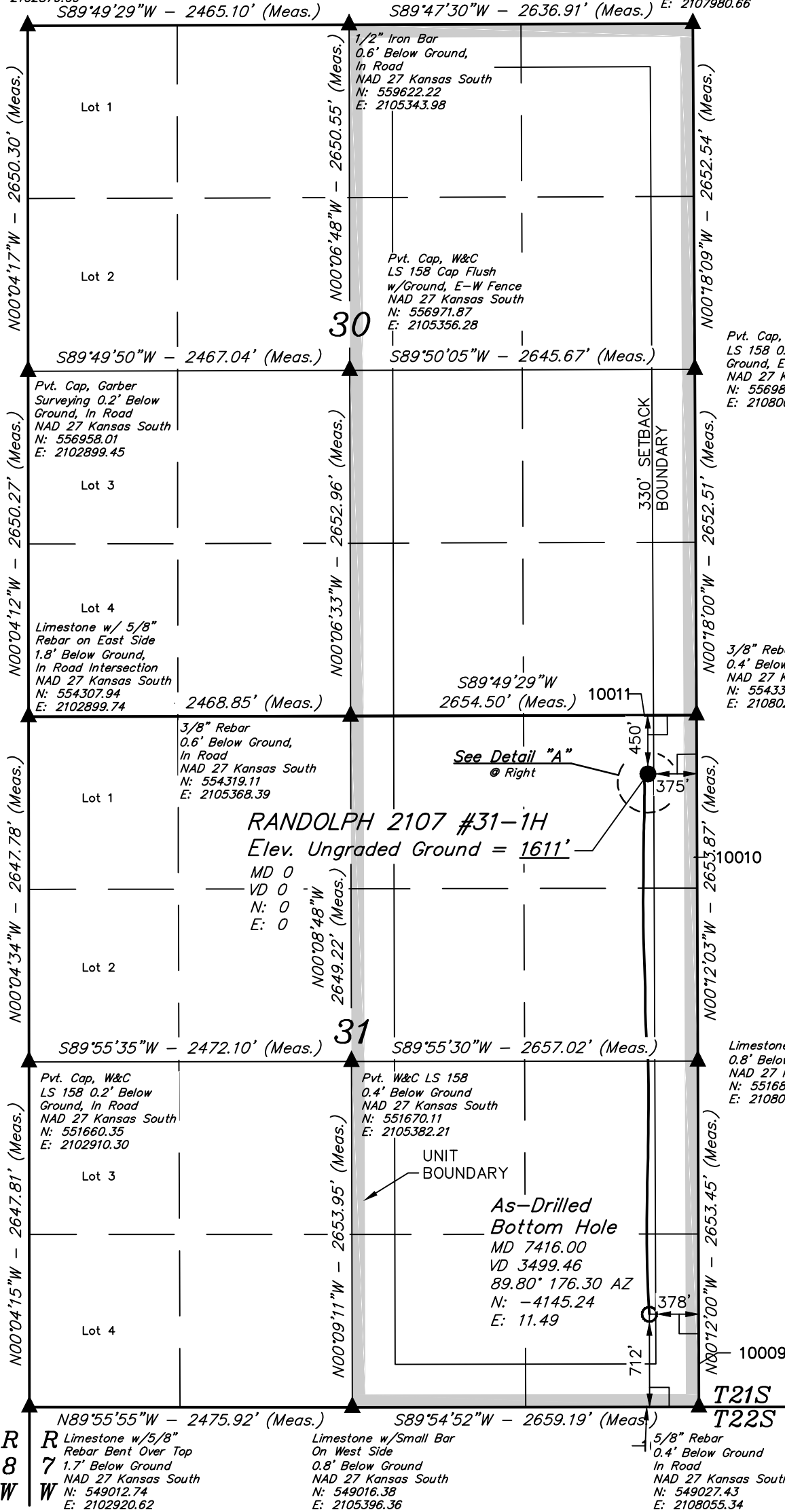
SPOT ELEVATION LOCATED AT THE SOUTHWEST CORNER OF SECTION 18, T23S, R8W, 6th P.M. TAKEN FROM THE ALDEN SE, QUADRANGLE, KANSAS, RENO COUNTY, 7.5 MINUTE QUAD (TOPOGRAPHIC MAP) PUBLISHED BY THE UNITED STATES DEPARTMENT OF THE INTERIOR, GEOLOGICAL SURVEY, SAID ELEVATION IS MARKED AS BEING 1688 FEET.

BASIS OF BEARINGS

BASIS OF BEARINGS IS A G.P.S. OBSERVATION.

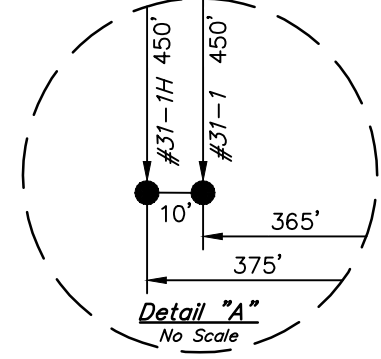
1/2" Rebar Over
Bent 5/8" Rebar
1.0' Below Ground
NAD 27 Kansas South
N: 559608.12
E: 2102879.09

5/8" Iron Bar
0.6' Below Ground,
In Road
NAD 27 Kansas South
N: 559638.82
E: 2107980.66



LEGEND:

- └─┘ = 90° SYMBOL
- = PROPOSED WELL HEAD.
- ▲ = SECTION CORNERS LOCATED.



CERTIFICATE

THIS IS TO CERTIFY THAT THE ABOVE PLAT WAS PREPARED FROM FIELD NOTES OF ACTUAL SURVEYS MADE BY ME OR UNDER MY SUPERVISION AND THAT THE SAME ARE TRUE AND CORRECT TO THE BEST OF MY KNOWLEDGE AND BELIEF.

Robert J. ...
REGISTERED LAND SURVEYOR
REGISTRATION NO. 1451
STATE OF UTAH

UINTAH ENGINEERING & LAND SURVEYING
85 SOUTH 200 EAST - VERNAL, UTAH 84078
(435) 789-1017

NAD 83 (#3-1H AS-DRILLED BOTTOM HOLE) LATITUDE = 38°10'33.11" (38.175864) LONGITUDE = 98°07'32.79" (98.125775)	NAD 83 (#31-1H SURFACE LOCATION) LATITUDE = 38°11'14.09" (38.187247) LONGITUDE = 98°07'32.86" (98.125794)
NAD 27 (#3-1H AS-DRILLED BOTTOM HOLE) LATITUDE = 38°10'33.07" (38.175853) LONGITUDE = 98°07'31.58" (98.125439)	NAD 27 (#31-1H SURFACE LOCATION) LATITUDE = 38°11'14.05" (38.187236) LONGITUDE = 98°07'31.65" (98.125458)
STATE PLANE NAD 27 (KANSAS SOUTH) N: 549737.39 E: 2107673.17	STATE PLANE NAD 27 (KANSAS SOUTH) N: 553882.31 E: 2107650.66

SCALE 1" = 1000'	DATE SURVEYED: 02-25-13	DATE DRAWN: 03-12-13
PARTY B.L. T.B. C.A.G.	REFERENCES G.L.O. PLAT	
WEATHER COOL	FILE SGOMI	