



DRILL STEM TEST REPORT

Prepared For: **F.G.Holl Company L.L.C.**

9431 East Central Suite 100
Wichita, Kansas 67206-2563

ATTN: Ryan Greenbaum

Schmitt Family #1-15

15-20s-15w Barton

Start Date: 2013.02.01 @ 00:00:00

End Date:

Job Ticket #: 16959

DST #: 6

Superior Testers Enterprises LLC
PO Box 138 Great Bend KS 67530
1-800-792-6902

Printed: 2013.02.01 @ 16:16:04



DRILL STEM TEST REPORT

F.G.Holl Company L.L.C.

15-20s-15w Barton

9431 East Central Suite 100
Wichita, Kansas 67206-2563

Schmitt Family #1-15

ATTN: Ryan Greenbaum

Job Ticket: 16959

DST#: 6

Test Start: 2013.02.01 @ 00:00:00

GENERAL INFORMATION:

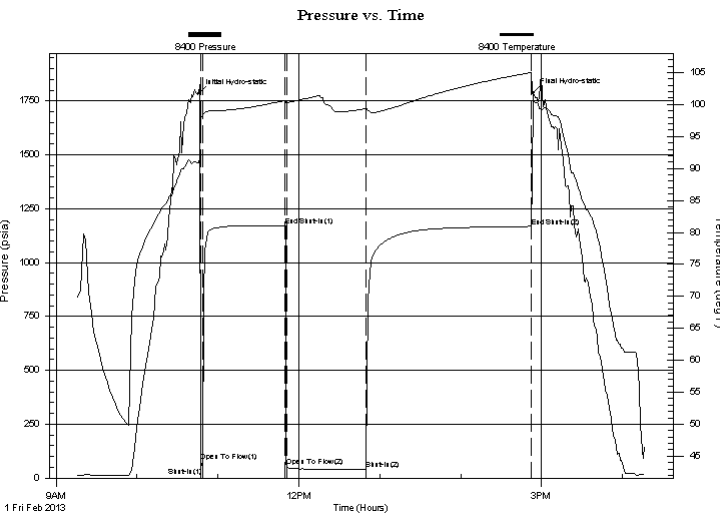
Formation: **Arbuckle**
 Deviated: No Whipstock: ft (KB)
 Time Tool Opened:
 Time Test Ended:
 Interval: **3720.00 ft (KB) To 3730.00 ft (KB) (TVD)**
 Total Depth: 3730.00 ft (KB) (TVD)
 Hole Diameter: 7.88 inches Hole Condition: Fair
 Test Type: Conventional Bottom Hole (Initial)
 Tester: Shane Konzem
 Unit No: 3330 Great Bend/ 40
 Reference Elevations: 1996.00 ft (KB)
 1988.00 ft (CF)
 KB to GR/CF: 8.00 ft

Serial #: 8400

Outside

Press @ Run Depth: 1167.76 psia @ 3727.00 ft (KB) Capacity: 5000.00 psia
 Start Date: 2013.02.01 End Date: 2013.02.01 Last Calib.: 2013.02.01
 Start Time: 09:15:00 End Time: 16:16:30 Time On Btm: 2013.02.01 @ 10:45:30
 Time Off Btm: 2013.02.01 @ 14:54:00

TEST COMMENT: 1st Open/ 2 minutes/ Strong blow built to the bottom of bucket of a 5 gallon bucket in 30 seconds!
 1st Shut In/ 60 Minutes/ No Blow
 2nd Open/ 60 Minutes/ Strong blow built to the bottom of a 5 gallon bucket in less than 30 seconds
 2nd Shut In/ 120 Minutes/ weak blow back .



PRESSURE SUMMARY

Time (Min.)	Pressure (psia)	Temp (deg F)	Annotation
0	1783.10	90.94	Initial Hydro-static
2	76.73	97.95	Open To Flow (1)
3	50.24	98.18	Shut-In(1)
64	1172.26	100.62	End Shut-In(1)
66	54.35	100.32	Open To Flow (2)
125	41.31	99.40	Shut-In(2)
247	1167.76	105.02	End Shut-In(2)
249	1786.14	100.85	Final Hydro-static

Recovery

Length (ft)	Description	Volume (bbl)
40.00	Drilling Mud	0.56

Gas Rates

	Choke (inches)	Pressure (psia)	Gas Rate (Mcf/d)
First Gas Rate	1.00	5.70	163.87
Last Gas Rate	1.00	4.92	141.44
Max. Gas Rate	1.00	5.70	163.87



DRILL STEM TEST REPORT

F.G.Holl Company L.L.C.

15-20s-15w Barton

9431 East Central Suite 100
Wichita, Kansas 67206-2563

Schmitt Family #1-15

Job Ticket: 16959

DST#: 6

ATTN: Ryan Greenbaum

Test Start: 2013.02.01 @ 00:00:00

GENERAL INFORMATION:

Formation: **Arbuckle**

Deviated: No Whipstock: ft (KB)

Time Tool Opened:

Time Test Ended:

Test Type: Conventional Bottom Hole (Initial)

Tester: Shane Konzem

Unit No: 3330 Great Bend/ 40

Interval: 3720.00 ft (KB) To 3730.00 ft (KB) (TVD)

Reference Elevations: 1996.00 ft (KB)

Total Depth: 3730.00 ft (KB) (TVD)

1988.00 ft (CF)

Hole Diameter: 7.88 inches Hole Condition: Fair

KB to GR/CF: 8.00 ft

Serial #: 8405

Inside

Press @ Run Depth: 1167.67 psia @ 3726.00 ft (KB)

Capacity: 5000.00 psia

Start Date: 2013.02.01

End Date:

2013.02.01

Last Calib.:

2013.02.01

Start Time: 09:15:00

End Time:

16:25:30

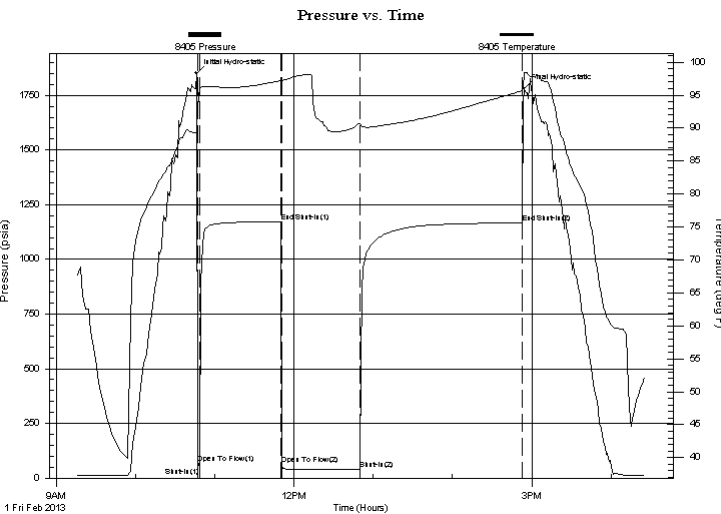
Time On Btm:

2013.02.01 @ 10:46:00

Time Off Btm:

2013.02.01 @ 14:54:00

TEST COMMENT: 1st Open/ 2 minutes/ Strong blow built to the bottom of bucket of a 5 gallon bucket in 30 seconds!
1st Shut In/ 60 Minutes/ No Blow
2nd Open/ 60 Minutes/ Strong blow built to the bottom of a 5 gallon bucket in less than 30 seconds
2nd Shut In/ 120 Minutes/ weak blow back .



PRESSURE SUMMARY

Time (Min.)	Pressure (psia)	Temp (deg F)	Annotation
0	1851.16	89.41	Initial Hydro-static
1	65.42	92.96	Open To Flow (1)
3	50.38	95.89	Shut-In(1)
64	1172.01	97.23	End Shut-In(1)
65	62.78	97.15	Open To Flow (2)
124	39.12	90.72	Shut-In(2)
247	1167.67	95.64	End Shut-In(2)
248	1782.33	98.14	Final Hydro-static

Recovery

Length (ft)	Description	Volume (bbl)
40.00	Drilling Mud	0.56

Gas Rates

	Choke (inches)	Pressure (psia)	Gas Rate (Mcf/d)
First Gas Rate	1.00	5.70	163.87
Last Gas Rate	1.00	4.92	141.44
Max. Gas Rate	1.00	5.70	163.87



DRILL STEM TEST REPORT

TOOL DIAGRAM

F.G.Holl Company L.L.C.

15-20s-15w Barton

9431 East Central Suite 100
Wichita, Kansas 67206-2563

Schmitt Family #1-15

Job Ticket: 16959

DST#: 6

ATTN: Ryan Greenbaum

Test Start: 2013.02.01 @ 00:00:00

Tool Information

Drill Pipe:	Length: 3712.00 ft	Diameter: 3.80 inches	Volume: 52.07 bbl	Tool Weight: 2000.00 lb
Heavy Wt. Pipe:	Length: 0.00 ft	Diameter: 0.00 inches	Volume: 0.00 bbl	Weight set on Packer: 20000.00 lb
Drill Collar:	Length: 0.00 ft	Diameter: 0.00 inches	Volume: 0.00 bbl	Weight to Pull Loose: lb
			<u>Total Volume: 52.07 bbl</u>	Tool Chased ft
Drill Pipe Above KB:	15.00 ft			String Weight: Initial lb
Depth to Top Packer:	3720.00 ft			Final lb
Depth to Bottom Packer:	ft			
Interval between Packers:	10.00 ft			
Tool Length:	33.00 ft			
Number of Packers:	1	Diameter: 6.75 inches		
Tool Comments:				

Tool Description	Length (ft)	Serial No.	Position	Depth (ft)	Accum. Lengths
------------------	-------------	------------	----------	------------	----------------

SHut-InTool	5.00		Inside	3702.00	
Hydraulic Tool	5.00			3707.00	
Jars	6.00			3713.00	
Safety Joint	2.00			3715.00	
Packer	5.00			3720.00	23.00 Bottom Of Top Packer
Packer	0.00			3720.00	
Anchor	5.00			3725.00	
Recorder	1.00	8405	Inside	3726.00	
Recorder	1.00	8400	Outside	3727.00	
Bullnose	3.00			3730.00	10.00 Bottom Packers & Anchor
Total Tool Length:	33.00				



DRILL STEM TEST REPORT

FLUID SUMMARY

F.G.Holl Company L.L.C.

15-20s-15w Barton

9431 East Central Suite 100
Wichita, Kansas 67206-2563

Schmitt Family #1-15

Job Ticket: 16959

DST#: 6

ATTN: Ryan Greenbaum

Test Start: 2013.02.01 @ 00:00:00

Mud and Cushion Information

Mud Type: Gel Chem
Mud Weight: 9.00 lb/gal
Viscosity: 56.00 sec/qt
Water Loss: 7.98 in³
Resistivity: ohm.m
Salinity: 4200.00 ppm
Filter Cake: 1.00 inches

Cushion Type:
Cushion Length: ft
Cushion Volume: bbl
Gas Cushion Type:
Gas Cushion Pressure: psia

Oil API: deg API
Water Salinity: ppm

Recovery Information

Recovery Table

Length ft	Description	Volume bbl
40.00	Drilling Mud	0.561

Total Length: 40.00 ft Total Volume: 0.561 bbl

Num Fluid Samples: 0

Num Gas Bombs: 0

Serial #:

Laboratory Name:

Laboratory Location:

Recovery Comments:



DRILL STEM TEST REPORT

GAS RATES

F.G.Holl Company L.L.C.

15-20s-15w Barton

9431 East Central Suite 100
Wichita, Kansas 67206-2563

Schmitt Family #1-15

Job Ticket: 16959

DST#: 6

ATTN: Ryan Greenbaum

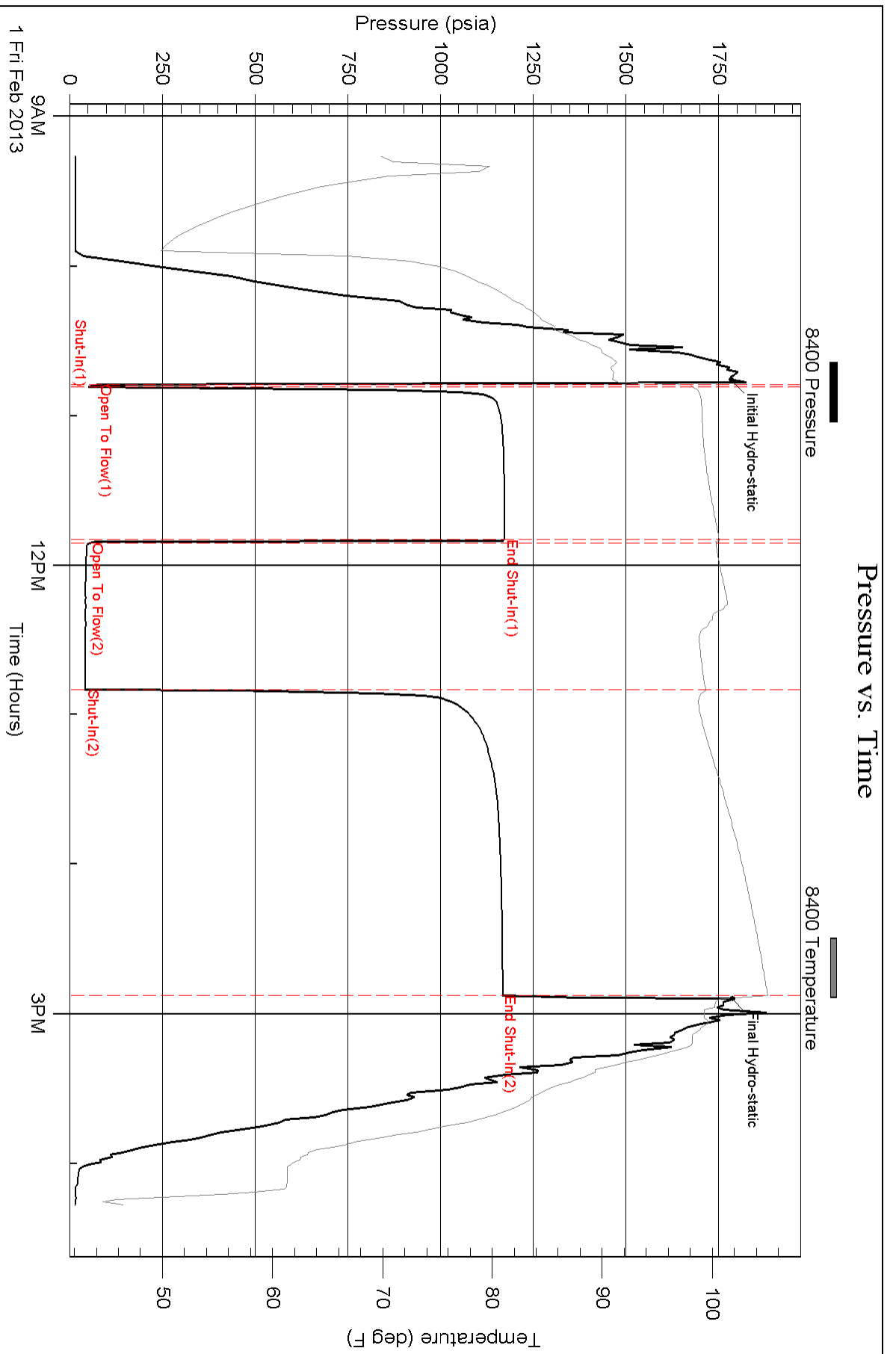
Test Start: 2013.02.01 @ 00:00:00

Gas Rates Information

Temperature: 59 (deg F)
Relative Density: 0.65
Z Factor: 0.8

Gas Rates Table

Flow Period	Elapsed Time	Choke (inches)	Pressure (psia)	Gas Rate (Mcf/d)
2	5	1.00	5.70	163.87
2	5	1.00	5.70	163.87
2	10	1.00	5.10	146.62
2	20	1.00	4.92	141.44
2	30	1.00	4.92	141.44
2	50	1.00	4.92	141.44
2	55	1.00	4.92	141.44



Pressure vs. Time

