



## DRILL STEM TEST REPORT

Prepared For: **F.G.Holl Company L.L.C.**

9431 East Central Suite 100  
Wichita, Kansas 67206-2563

ATTN: Ryan Greenbaum

### **Schmitt Family #1-15**

#### **15-20s-15w Barton**

Start Date: 2013.02.02 @ 00:00:00

End Date:

Job Ticket #: 16960

DST #: 7

Superior Testers Enterprises LLC  
PO Box 138 Great Bend KS 67530  
1-800-792-6902

Printed: 2013.02.02 @ 06:59:14



# DRILL STEM TEST REPORT

F.G.Holl Company L.L.C.

**15-20s-15w Barton**

9431 East Central Suite 100  
Wichita, Kansas 67206-2563

**Schmitt Family #1-15**

Job Ticket: 16960

**DST#: 7**

ATTN: Ryan Greenbaum

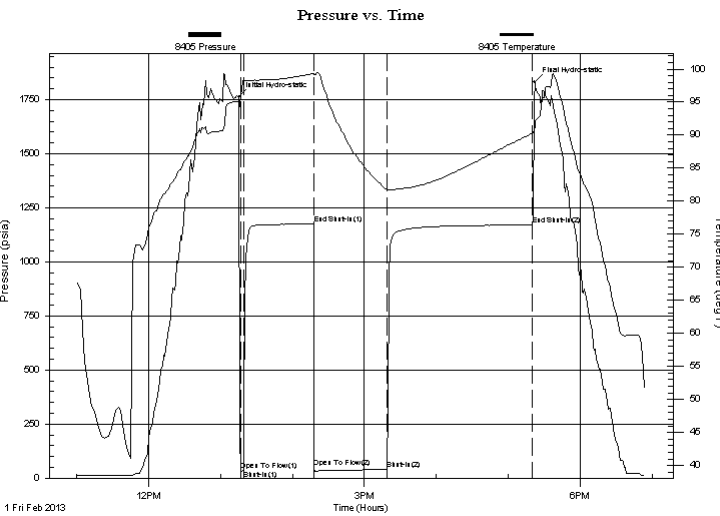
Test Start: 2013.02.02 @ 00:00:00

## GENERAL INFORMATION:

Formation: **Arbuckle**  
 Deviated: No Whipstock: ft (KB)  
 Test Type: Conventional Bottom Hole (Initial)  
 Time Tool Opened:  
 Tester: Shane Konzem  
 Time Test Ended:  
 Unit No: 3330 Great Bend/ 40  
 Interval: **3730.00 ft (KB) To 3741.00 ft (KB) (TVD)**  
 Reference Elevations: 1996.00 ft (KB)  
 Total Depth: 3741.00 ft (KB) (TVD)  
 1988.00 ft (CF)  
 Hole Diameter: 7.88 inches Hole Condition: Fair  
 KB to GR/CF: 8.00 ft

**Serial #: 8405 Outside**  
 Press @ Run Depth: 1170.38 psia @ 3738.00 ft (KB) Capacity: 5000.00 psia  
 Start Date: 2013.02.01 End Date: 2013.02.01 Last Calib.: 2013.02.02  
 Start Time: 11:00:00 End Time: 18:53:30 Time On Btm: 2013.02.01 @ 13:15:30  
 Time Off Btm: 2013.02.01 @ 17:22:00

**TEST COMMENT:** 1st Open/ 2 minutes. Strong blow built to the bottom of a 5 gallon bucket in less than 1 minute  
 1st Shut In/ 60 minutes. No blow back  
 2nd Open/ 60 minutes. Strong blow built to the bottom of a 5 gallon bucket in less than 1 minute. Gas in 4  
 2nd Shut In/ 120 Minutes. weak blow back



## PRESSURE SUMMARY

Time (Min.)	Pressure (psia)	Temp (deg F)	Annotation
0	1763.88	95.14	Initial Hydro-static
2	38.33	96.08	Open To Flow (1)
4	35.52	98.30	Shut-In(1)
62	1176.25	99.34	End Shut-In(1)
63	48.37	99.10	Open To Flow (2)
124	39.11	81.72	Shut-In(2)
245	1170.38	90.29	End Shut-In(2)
247	1832.76	91.49	Final Hydro-static

## Recovery

Length (ft)	Description	Volume (bbl)
40.00	Drilling Mud	0.56

## Gas Rates

	Choke (inches)	Pressure (psia)	Gas Rate (Mcf/d)
First Gas Rate	1.00	2.15	61.81
Last Gas Rate	1.00	3.83	110.11
Max. Gas Rate	1.00	3.83	110.11



# DRILL STEM TEST REPORT

F.G.Holl Company L.L.C.

**15-20s-15w Barton**

9431 East Central Suite 100  
Wichita, Kansas 67206-2563

**Schmitt Family #1-15**

ATTN: Ryan Greenbaum

Job Ticket: 16960

**DST#: 7**

Test Start: 2013.02.02 @ 00:00:00

## GENERAL INFORMATION:

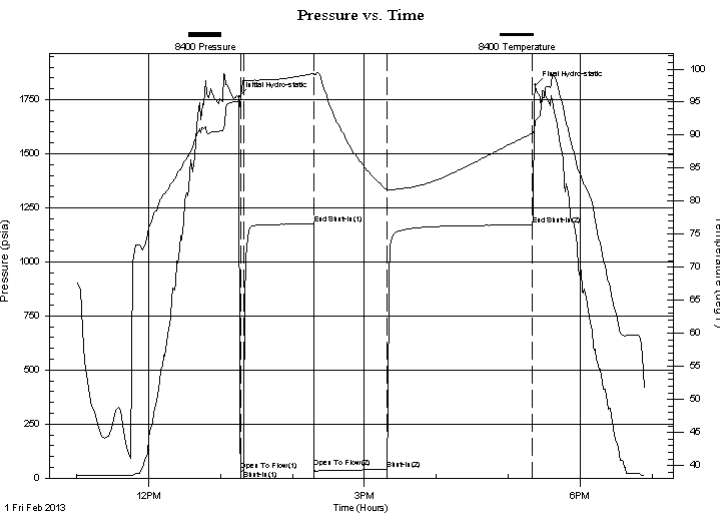
Formation: **Arbuckle**  
 Deviated: No Whipstock: ft (KB)  
 Test Type: Conventional Bottom Hole (Initial)  
 Time Tool Opened:  
 Tester: Shane Konzem  
 Time Test Ended:  
 Unit No: 3330 Great Bend/ 40  
 Interval: **3730.00 ft (KB) To 3741.00 ft (KB) (TVD)**  
 Reference Elevations: 1996.00 ft (KB)  
 Total Depth: 3741.00 ft (KB) (TVD)  
 1988.00 ft (CF)  
 Hole Diameter: 7.88 inches Hole Condition: Fair  
 KB to GR/CF: 8.00 ft

## Serial #: 8400

Inside

Press @ Run Depth: 1170.38 psia @ 3737.00 ft (KB) Capacity: 5000.00 psia  
 Start Date: 2013.02.01 End Date: 2013.02.01 Last Calib.: 2013.02.02  
 Start Time: 11:00:00 End Time: 18:53:30 Time On Btm: 2013.02.01 @ 13:15:30  
 Time Off Btm: 2013.02.01 @ 17:22:30

**TEST COMMENT:** 1st Open/ 2 minutes. Strong blow built to the bottom of a 5 gallon bucket in less than 1 minute  
 1st Shut In/ 60 minutes. No blow back  
 2nd Open/ 60 minutes. Strong blow built to the bottom of a 5 gallon bucket in less than 1 minute. Gas in 4  
 2nd Shut In/ 120 Minutes. weak blow back



## PRESSURE SUMMARY

Time (Min.)	Pressure (psia)	Temp (deg F)	Annotation
0	1763.88	95.14	Initial Hydro-static
2	38.33	96.08	Open To Flow (1)
4	35.52	98.30	Shut-In(1)
62	1176.25	99.34	End Shut-In(1)
63	48.37	99.10	Open To Flow (2)
124	39.11	81.72	Shut-In(2)
245	1170.38	90.29	End Shut-In(2)
247	1816.26	91.99	Final Hydro-static

## Recovery

Length (ft)	Description	Volume (bbl)
40.00	Drilling Mud	0.56

## Gas Rates

	Choke (inches)	Pressure (psia)	Gas Rate (Mcf/d)
First Gas Rate	1.00	2.15	61.81
Last Gas Rate	1.00	3.83	110.11
Max. Gas Rate	1.00	3.83	110.11



# DRILL STEM TEST REPORT

TOOL DIAGRAM

F.G.Holl Company L.L.C.

15-20s-15w Barton

9431 East Central Suite 100  
Wichita, Kansas 67206-2563

Schmitt Family #1-15

Job Ticket: 16960

DST#: 7

ATTN: Ryan Greenbaum

Test Start: 2013.02.02 @ 00:00:00

## Tool Information

Drill Pipe:	Length: 3737.00 ft	Diameter: 3.80 inches	Volume: 52.42 bbl	Tool Weight: 2000.00 lb
Heavy Wt. Pipe:	Length: 0.00 ft	Diameter: 0.00 inches	Volume: 0.00 bbl	Weight set on Packer: 20000.00 lb
Drill Collar:	Length: 0.00 ft	Diameter: 0.00 inches	Volume: 0.00 bbl	Weight to Pull Loose: 64000.00 lb
			<u>Total Volume: 52.42 bbl</u>	Tool Chased 0.00 ft
Drill Pipe Above KB:	30.00 ft			String Weight: Initial 48000.00 lb
Depth to Top Packer:	3730.00 ft			Final 49000.00 lb
Depth to Bottom Packer:	ft			
Interval between Packers:	11.00 ft			
Tool Length:	34.00 ft			
Number of Packers:	1	Diameter: 6.75 inches		

Tool Comments:

Tool Description	Length (ft)	Serial No.	Position	Depth (ft)	Accum. Lengths
------------------	-------------	------------	----------	------------	----------------

SHut-InTool	5.00		Inside	3712.00	
Hydraulic Tool	5.00			3717.00	
Jars	6.00			3723.00	
Safety Joint	2.00			3725.00	
Packer	0.00			3725.00	23.00 Bottom Of Top Packer
Packer	5.00			3730.00	
Anchor	6.00			3736.00	
Recorder	1.00	8400	Inside	3737.00	
Recorder	1.00	8405	Outside	3738.00	
Bullnose	3.00			3741.00	11.00 Bottom Packers & Anchor
<b>Total Tool Length:</b>	<b>34.00</b>				



# DRILL STEM TEST REPORT

## FLUID SUMMARY

F.G.Holl Company L.L.C.

**15-20s-15w Barton**

9431 East Central Suite 100  
Wichita, Kansas 67206-2563

**Schmitt Family #1-15**

Job Ticket: 16960

**DST#: 7**

ATTN: Ryan Greenbaum

Test Start: 2013.02.02 @ 00:00:00

### Mud and Cushion Information

Mud Type: Gel Chem

Cushion Type:

Oil API:

deg API

Mud Weight: 9.00 lb/gal

Cushion Length:

ft

Water Salinity:

ppm

Viscosity: 56.00 sec/qt

Cushion Volume:

bbbl

Water Loss: 8.00 in<sup>3</sup>

Gas Cushion Type:

Resistivity: ohm.m

Gas Cushion Pressure:

psia

Salinity: 4200.00 ppm

Filter Cake: 1.00 inches

### Recovery Information

Recovery Table

Length ft	Description	Volume bbl
40.00	Drilling Mud	0.561

Total Length: 40.00 ft      Total Volume: 0.561 bbl

Num Fluid Samples: 0

Num Gas Bombs: 0

Serial #:

Laboratory Name:

Laboratory Location:

Recovery Comments:



# DRILL STEM TEST REPORT

**GAS RATES**

F.G.Holl Company L.L.C.

**15-20s-15w Barton**

9431 East Central Suite 100  
Wichita, Kansas 67206-2563

**Schmitt Family #1-15**

Job Ticket: 16960

**DST#: 7**

ATTN: Ryan Greenbaum

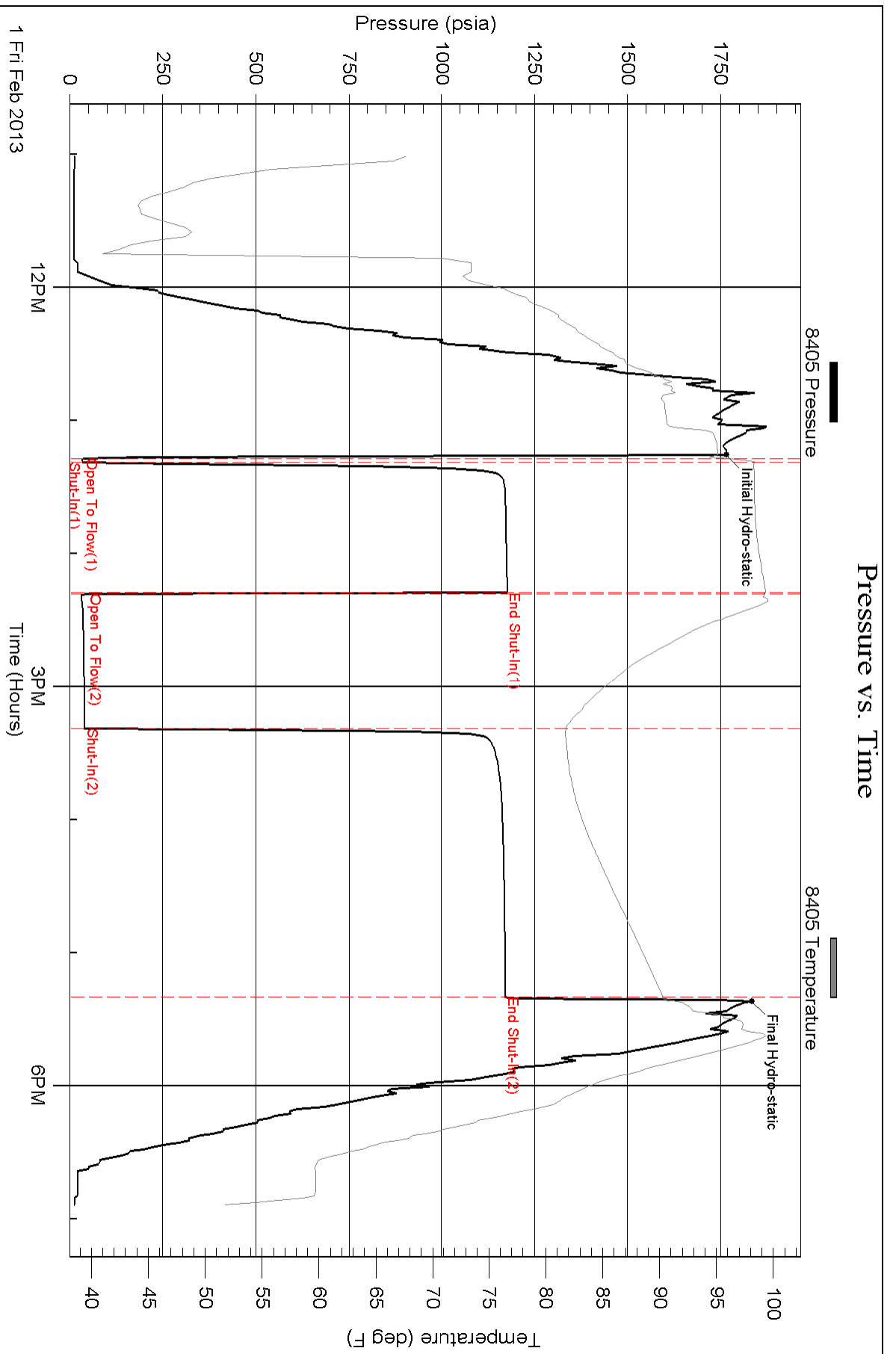
Test Start: 2013.02.02 @ 00:00:00

## Gas Rates Information

Temperature: 59 (deg F)  
Relative Density: 0.65  
Z Factor: 0.8

Gas Rates Table

Flow Period	Elapsed Time	Choke (inches)	Pressure (psia)	Gas Rate (Mcf/d)
2	10	1.00	2.15	61.81
2	20	1.00	3.83	110.11
2	30	1.00	3.83	110.11
2	40	1.00	3.83	110.11
2	50	1.00	3.83	110.11
2	55	1.00	3.83	110.11



### Pressure vs. Time

