



DRILL STEM TEST REPORT

Prepared For: **F.G.Holl Company L.L.C.**

9431 East Central Suite 100
Wichita, Kansas 67206-2563

ATTN: Ryan Greenbaum

Schmitt Family #1-15

15-20s-15w Barton

Start Date: 2013.02.03 @ 00:00:00

End Date:

Job Ticket #: 16962

DST #: 9

Superior Testers Enterprises LLC
PO Box 138 Great Bend KS 67530
1-800-792-6902

Printed: 2013.02.03 @ 11:06:49



DRILL STEM TEST REPORT

F.G.Holl Company L.L.C.

15-20s-15w Barton

9431 East Central Suite 100
Wichita, Kansas 67206-2563

Schmitt Family #1-15

ATTN: Ryan Greenbaum

Job Ticket: 16962

DST#: 9

Test Start: 2013.02.03 @ 00:00:00

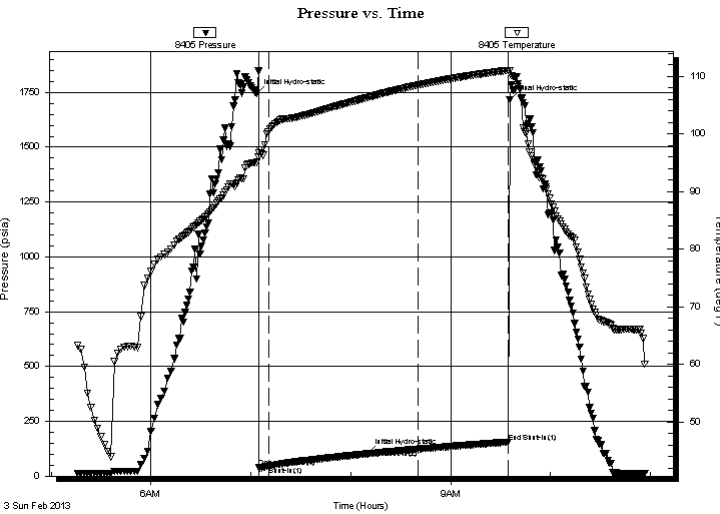
GENERAL INFORMATION:

Formation: **Arbuckle**
 Deviated: No Whipstock: ft (KB)
 Time Tool Opened:
 Time Test Ended:
 Interval: **3745.00 ft (KB) To 3760.00 ft (KB) (TVD)**
 Total Depth: 3760.00 ft (KB) (TVD)
 Hole Diameter: 7.88 inches Hole Condition: Fair
 Test Type: Conventional Bottom Hole (Initial)
 Tester: Shane Konzem
 Unit No: 3330 Great Bend/ 40
 Reference Elevations: 1996.00 ft (KB)
 1988.00 ft (CF)
 KB to GR/CF: 8.00 ft

Serial #: 8405 Outside

Press @ RunDepth: 155.39 psia @ 3757.00 ft (KB) Capacity: 5000.00 psia
 Start Date: 2013.02.03 End Date: 2013.02.03 Last Calib.: 2013.02.03
 Start Time: 05:16:00 End Time: 10:56:30 Time On Btm: 2013.02.03 @ 07:03:30
 Time Off Btm: 2013.02.03 @ 09:35:30

TEST COMMENT: 1st Open/ 5 Minutes. Fair blow built to the bottom of a 5 gallon bucket in 3 minutes
 1st Shut In/ 60 Minutes. fair blow back to 4 inches into the water
 2nd Open/ 30 Minutes/ Fair blow built to the bottom of a 5 gallon bucket in 12 minutes.
 2nd Shut In/ 60 Minutes/ Fair blow to 4 inches into the water



PRESSURE SUMMARY

Time (Min.)	Pressure (psia)	Temp (deg F)	Annotation
0	1743.55	95.12	Initial Hydro-static
2	39.63	96.72	Open To Flow (1)
7	44.75	100.46	Shut-In(1)
67	102.07	106.38	Initial Hydro-static
97	123.42	108.51	Shut-In(2)
151	155.39	111.06	End Shut-In(1)
152	1717.17	110.99	Final Hydro-static

Recovery

Length (ft)	Description	Volume (bbl)
1000.00	Gas in the pipe	14.03
20.00	Oil and gas cut mud	0.28
0.00	5%Gas 5% Oil 80%Mud 10%Water	0.00
60.00	4%Gas 1%Oil 40%Mud 55%Water	0.84
120.00	Water w ith a trace of oil	1.68
0.00	chlorides 32000	0.00

Gas Rates

	Choke (inches)	Pressure (psia)	Gas Rate (Mcf/d)



DRILL STEM TEST REPORT

F.G.Holl Company L.L.C.

15-20s-15w Barton

9431 East Central Suite 100
Wichita, Kansas 67206-2563

Schmitt Family #1-15

ATTN: Ryan Greenbaum

Job Ticket: 16962

DST#: 9

Test Start: 2013.02.03 @ 00:00:00

GENERAL INFORMATION:

Formation: **Arbuckle**

Deviated: No Whipstock: ft (KB)

Time Tool Opened:

Time Test Ended:

Test Type: Conventional Bottom Hole (Initial)

Tester: Shane Konzem

Unit No: 3330 Great Bend/ 40

Interval: 3745.00 ft (KB) To 3760.00 ft (KB) (TVD)

Reference Elevations: 1996.00 ft (KB)

Total Depth: 3760.00 ft (KB) (TVD)

1988.00 ft (CF)

Hole Diameter: 7.88 inches Hole Condition: Fair

KB to GR/CF: 8.00 ft

Serial #: 8400 Inside

Press @ Run Depth: 157.16 psia @ 3756.00 ft (KB)

Capacity: 5000.00 psia

Start Date: 2013.02.03

End Date: 2013.02.03

Last Calib.: 2013.02.03

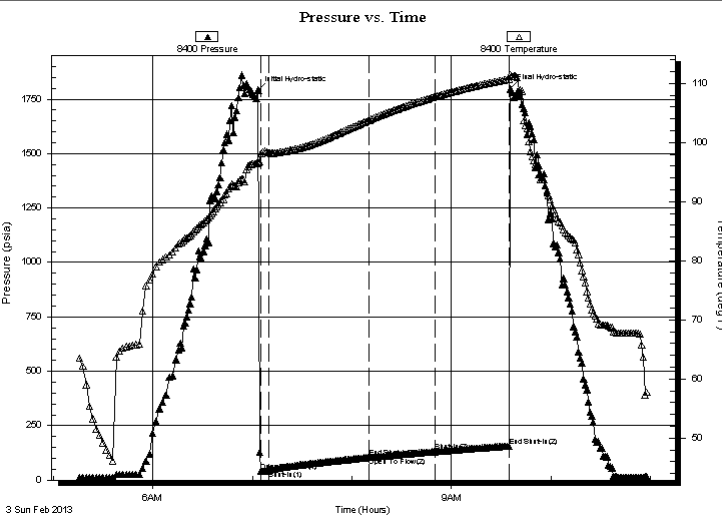
Start Time: 05:16:00

End Time: 10:57:30

Time On Btm: 2013.02.03 @ 07:03:30

Time Off Btm: 2013.02.03 @ 09:35:30

TEST COMMENT: 1st Open/ 5 Minutes. Fair blow built to the bottom of a 5 gallon bucket in 3 minutes
 1st Shut In/ 60 Minutes. fair blow back to 4 inches into the water
 2nd Open/ 30 Minutes/ Fair blow built to the bottom of a 5 gallon bucket in 12 minutes.
 2nd Shut In/ 60 Minutes/ Fair blow to 4 inches into the water



PRESSURE SUMMARY

Time (Min.)	Pressure (psia)	Temp (deg F)	Annotation
0	1791.45	96.63	Initial Hydro-static
2	40.85	98.11	Open To Flow (1)
7	47.24	98.25	Shut-In(1)
67	103.74	103.75	End Shut-In(1)
67	104.11	103.81	Open To Flow (2)
107	130.95	107.75	Shut-In(2)
151	157.16	110.75	End Shut-In(2)
152	1796.99	111.53	Final Hydro-static

Recovery

Length (ft)	Description	Volume (bbl)
1000.00	Gas in the pipe	14.03
20.00	Oil and gas cut mud	0.28
0.00	5%Gas 5% Oil 80%Mud 10%Water	0.00
60.00	4%Gas 1%Oil 40%Mud 55%Water	0.84
120.00	Water w ith a trace of oil	1.68
0.00	chlorides 32000	0.00

Gas Rates

	Choke (inches)	Pressure (psia)	Gas Rate (Mcf/d)



DRILL STEM TEST REPORT

TOOL DIAGRAM

F.G.Holl Company L.L.C.

15-20s-15w Barton

9431 East Central Suite 100
Wichita, Kansas 67206-2563

Schmitt Family #1-15

Job Ticket: 16962

DST#: 9

ATTN: Ryan Greenbaum

Test Start: 2013.02.03 @ 00:00:00

Tool Information

Drill Pipe:	Length: 3737.00 ft	Diameter: 3.80 inches	Volume: 52.42 bbl	Tool Weight: 2000.00 lb
Heavy Wt. Pipe:	Length: 0.00 ft	Diameter: 0.00 inches	Volume: 0.00 bbl	Weight set on Packer: 20000.00 lb
Drill Collar:	Length: 0.00 ft	Diameter: 0.00 inches	Volume: 0.00 bbl	Weight to Pull Loose: 52000.00 lb
			<u>Total Volume: 52.42 bbl</u>	Tool Chased 0.00 ft
Drill Pipe Above KB:	15.00 ft			String Weight: Initial 46000.00 lb
Depth to Top Packer:	3745.00 ft			Final 48000.00 lb
Depth to Bottom Packer:	ft			
Interval between Packers:	15.00 ft			
Tool Length:	38.00 ft			
Number of Packers:	1	Diameter: 6.75 inches		

Tool Comments:

Tool Description	Length (ft)	Serial No.	Position	Depth (ft)	Accum. Lengths
------------------	-------------	------------	----------	------------	----------------

SHut-InTool	5.00		Inside	3727.00	
Hydraulic Tool	5.00			3732.00	
Jars	6.00			3738.00	
Safety Joint	2.00			3740.00	
Packer	0.00			3740.00	23.00 Bottom Of Top Packer
Packer	5.00			3745.00	
Anchor	10.00			3755.00	
Recorder	1.00	8400	Inside	3756.00	
Recorder	1.00	8405	Outside	3757.00	
Bullnose	3.00			3760.00	15.00 Bottom Packers & Anchor
Total Tool Length:	38.00				



DRILL STEM TEST REPORT

FLUID SUMMARY

F.G.Holl Company L.L.C.

15-20s-15w Barton

9431 East Central Suite 100
Wichita, Kansas 67206-2563

Schmitt Family #1-15

Job Ticket: 16962

DST#: 9

ATTN: Ryan Greenbaum

Test Start: 2013.02.03 @ 00:00:00

Mud and Cushion Information

Mud Type: Gel Chem	Cushion Type:	Oil API:	deg API
Mud Weight: 9.00 lb/gal	Cushion Length: ft	Water Salinity:	ppm
Viscosity: 65.00 sec/qt	Cushion Volume: bbl		
Water Loss: 7.99 in ³	Gas Cushion Type:		
Resistivity: ohm.m	Gas Cushion Pressure: psia		
Salinity: 4700.00 ppm			
Filter Cake: 1.00 inches			

Recovery Information

Recovery Table

Length ft	Description	Volume bbl
1000.00	Gas in the pipe	14.027
20.00	Oil and gas cut mud	0.281
0.00	5%Gas 5% Oil 80%Mud 10%Water	0.000
60.00	4%Gas 1%Oil 40%Mud 55%Water	0.842
120.00	Water with a trace of oil	1.683
0.00	chlorides 32000	0.000

Total Length: 1200.00 ft Total Volume: 16.833 bbl

Num Fluid Samples: 0

Num Gas Bombs: 0

Serial #:

Laboratory Name:

Laboratory Location:

Recovery Comments:

