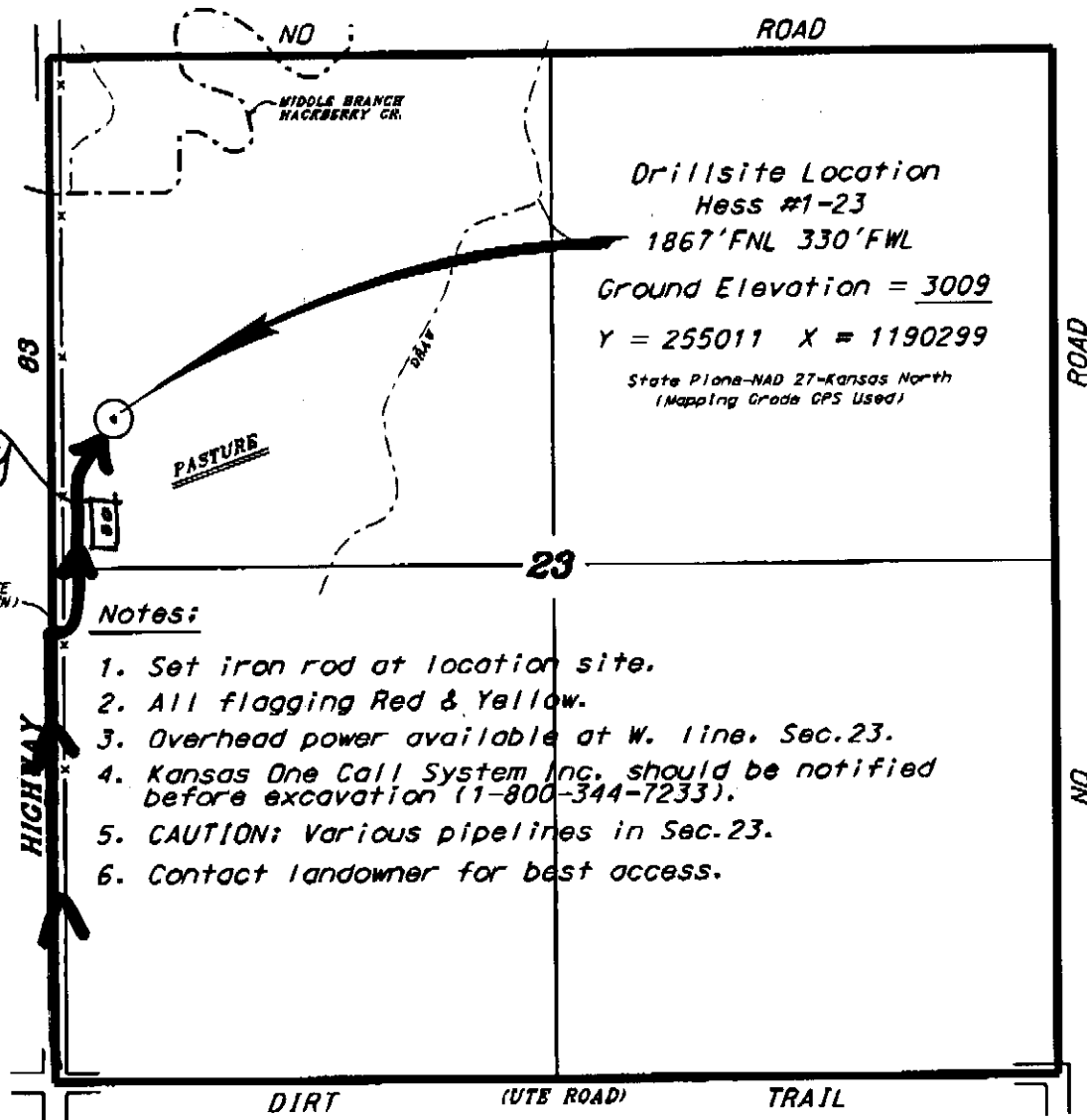


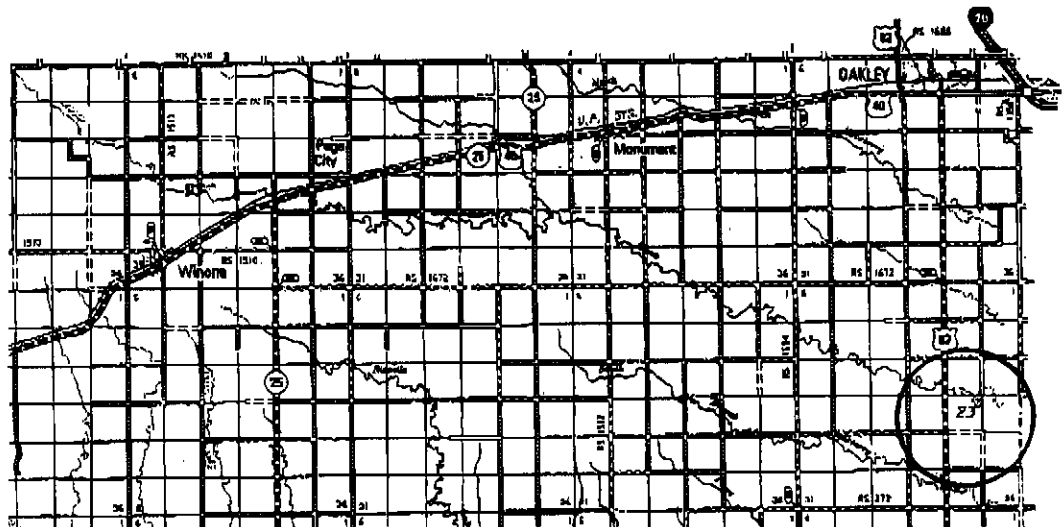
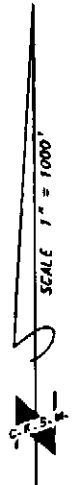
GRAND MESA OPERATING COMPANY
HESS LEASE
NW.1/4, SECTION 23, T12S, R32W
LOGAN COUNTY, KANSAS



*Ingress and egress to location as shown on this plan is for public use only and may not be legally opened for public use. Contact landowner, tenant and county road department for access.

Notes:

1. Set iron rod at location site.
2. All flagging Red & Yellow.
3. Overhead power available at W. line, Sec.23.
4. Kansas One Call System Inc. should be notified before excavation (1-800-344-7233).
5. CAUTION: Various pipelines in Sec.23.
6. Contact landowner for best access.



Controlling data is based upon the best maps and photographs available to us and upon a regular section of land containing 640 acres.

Approximate section lines were determined using the normal corners of some of allfield surveys existing in the state of Kansas. The section corners, which establish the precise section lines, were not necessarily located, and the exact location of the well location in the section is not guaranteed. Therefore, the operator securing this service and accepting this plan and all other services relying thereon agree to hold Central Kansas Drilling Services, Inc., its officers and employees harmless from all losses, costs and expenses and hold entities released from any liability from incidental or consequential damages.

Approved by: _____

Date April 15, 2013