



LASSO ENERGY LLC
 1125 SOUTH MAIN
 P.O. BOX 465
 CHASE, KANSAS 67524

LASSO ENERGY LLC
 OPERATOR

NICHOLS
 LEASE

1
 WELL NO.

01/31/2013
 DATE

KIOWA
 COUNTY

KANSAS
 STATE

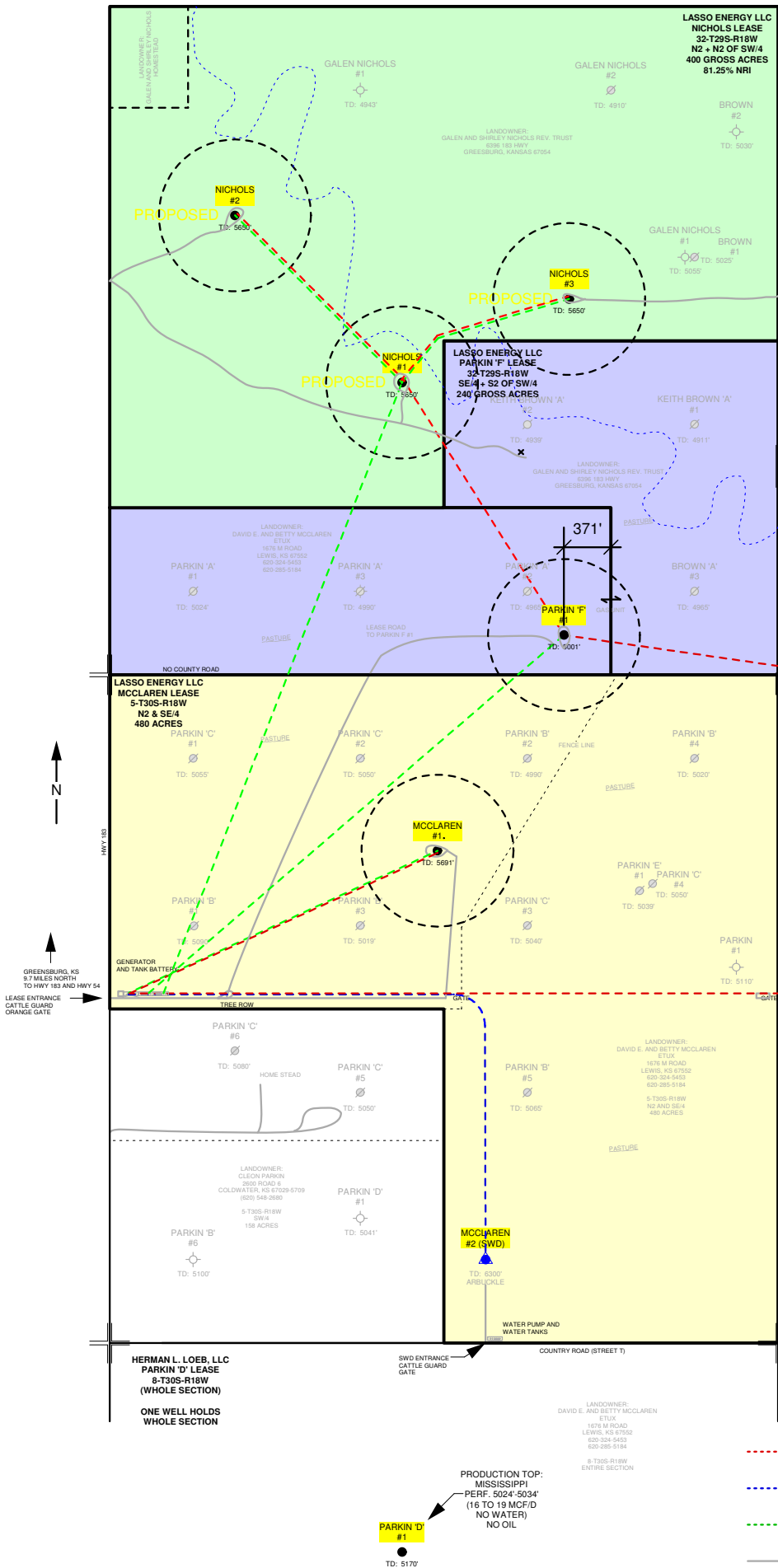
32
 S

29S
 T

18W
 R

' KB
 ELEVATION

990' FSL, 2970' FEL OF SEC
 LOCATION



NICHOLS LEASE:
 N2 & N2 OF SW/4
 400.0 GROSS ACRES
 32-T29S-R18W
 NRI: 81.2500%
 HELD BY LEASE

PARKIN F LEASE:
 SE/4 & S2 OF SW/4
 240.0 GROSS ACRES
 32-T29S-R18W
 NRI: 79.6250%
 HELD BY PRODUCTION

MCCLAREN LEASE:
 N2 & SE/4 -- 480.0 GROSS ACRES
 05-T30S-R18W
 384 NET ACRES
 NRI: 83.0%
 HELD BY PRODUCTION

- 2" POLY GAS LINE
- 3" PVC WATER DISPOSAL LINE
- 3" PVC LEAD (OIL & WATER) LINE
- LEASE ROAD

LASSO MCCLAREN, PARKIN F AND NICHOLS LEASES
 KIOWA COUNTY, KANSAS
 1120 GROSS ACRES

BK
 01/31/2013
 SURVEYED