



**TRILOBITE
TESTING, INC.**

DRILL STEM TEST REPORT

Berexco, LLC.

17-1S-37W Cheyenne, KS

2020 N Bramblewood
Wichita, KS 67206

Vada B #1-17

Job Ticket: 51216

DST#: 2

ATTN: Bryan Bynog

Test Start: 2013.03.19 @ 12:42:00

GENERAL INFORMATION:

Formation: **LKC "B,C,D"**

Deviated: No Whipstock: ft (KB)

Time Tool Opened: 15:48:00

Time Test Ended: 23:19:15

Test Type: Conventional Bottom Hole (Initial)

Tester: Kevin Mack

Unit No: 43

Interval: 4190.00 ft (KB) To 4350.00 ft (KB) (TVD)

Reference Elevations: 3216.00 ft (KB)

Total Depth: 4350.00 ft (KB) (TVD)

3205.00 ft (CF)

Hole Diameter: 7.88 inches Hole Condition: Good

KB to GR/CF: 11.00 ft

Serial #: 6799

Inside

Press @ Run Depth: 242.27 psig @ 4191.00 ft (KB)

Capacity: 8000.00 psig

Start Date: 2013.03.19

End Date:

2013.03.19

Last Calib.:

2013.03.19

Start Time:

12:42:05

End Time:

23:19:15

Time On Btm:

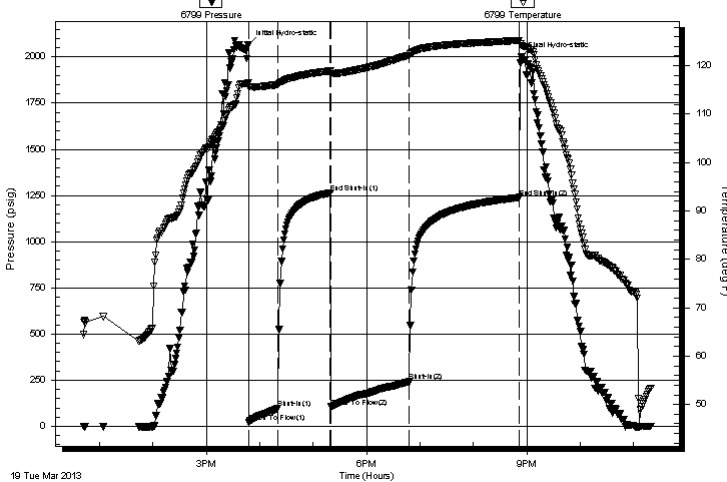
2013.03.19 @ 15:47:45

Time Off Btm:

2013.03.19 @ 20:53:30

TEST COMMENT: 30 - IF- 1/2" Blow built to 3"
60 - IS- No Return
90 - FF- Surface Blow started at 5 min. Built to 9"
120 - FSI - No Return

Pressure vs. Time



PRESSURE SUMMARY

Time (Min.)	Pressure (psig)	Temp (deg F)	Annotation
0	2066.51	116.44	Initial Hydro-static
1	23.44	115.65	Open To Flow (1)
33	97.44	116.14	Shut-In(1)
92	1264.40	118.92	End Shut-In(1)
93	105.18	118.42	Open To Flow (2)
181	242.27	122.17	Shut-In(2)
304	1239.14	125.23	End Shut-In(2)
306	1999.85	124.21	Final Hydro-static

Recovery

Length (ft)	Description	Volume (bbl)
240.00	WM 60M 40W	1.18
240.00	OSM 100M (oil spots)	1.18

Gas Rates

Choke (inches)	Pressure (psig)	Gas Rate (Mcf/d)



**TRILOBITE
TESTING, INC.**

DRILL STEM TEST REPORT

FLUID SUMMARY

Berexco, LLC.

17-1S-37W Cheyenne, KS

2020 N Bramblewood
Wichita, KS 67206

Vada B #1-17

Job Ticket: 51216

DST#: 2

ATTN: Bryan Bynog

Test Start: 2013.03.19 @ 12:42:00

Mud and Cushion Information

Mud Type: Gel Chem

Cushion Type:

Oil API:

deg API

Mud Weight: 9.00 lb/gal

Cushion Length:

ft

Water Salinity:

ppm

Viscosity: 48.00 sec/qt

Cushion Volume:

bbbl

Water Loss: 7.20 in³

Gas Cushion Type:

Resistivity: 0.00 ohm.m

Gas Cushion Pressure:

psig

Salinity: 2900.00 ppm

Filter Cake: 2.00 inches

Recovery Information

Recovery Table

Length ft	Description	Volume bbl
240.00	WM 60M 40W	1.180
240.00	OSM 100M (oil spots)	1.180

Total Length: 480.00 ft Total Volume: 2.360 bbl

Num Fluid Samples: 0

Num Gas Bombs: 0

Serial #:

Laboratory Name:

Laboratory Location:

Recovery Comments: RW = .58 @ 64 deg = 12,000ppm

