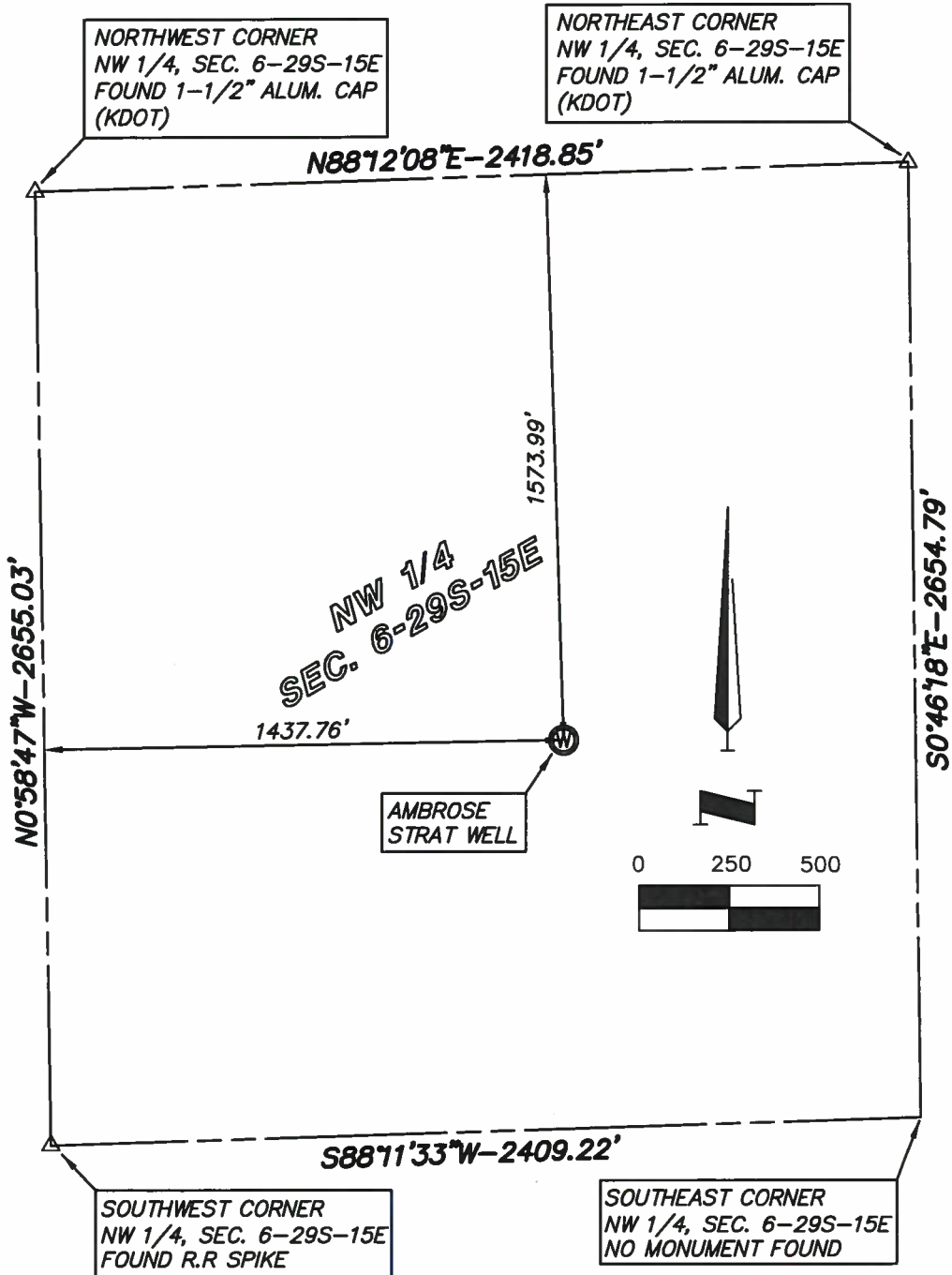


AMBROSE STRAT WELL
 Sec 6, T 29 S, R 15 E
 WILSON COUNTY, KANSAS



Description	Ground Elevation	NAD 83 Latitude	NAD 83 Longitude	NAD 27 Latitude	NAD 27 Longitude
Ambrose Strat Well	892.41	N37°33'17.10"	W95°48'35.65"	N37°33'16.92"	W95°48'34.71"

GENERAL NOTES:

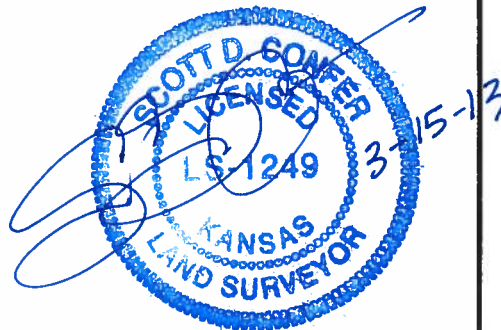
The bearings shown hereon are based on the State Plane Coordinate System, Kansas South Zone, NAD83

PREPARED FOR:
 WILSON COUNTY HOLDINGS, LLC



SHAFER, KLINE & WARREN, INC.

11250 CORPORATE AVENUE, LENEXA, KANSAS 66219
 PHONE: 913-888-7800 FAX: 913-888-7868
<http://www.skw-inc.com>



PROJECT NO. 120515-040	DATE 3/15/13	BY SAC
------------------------	--------------	--------