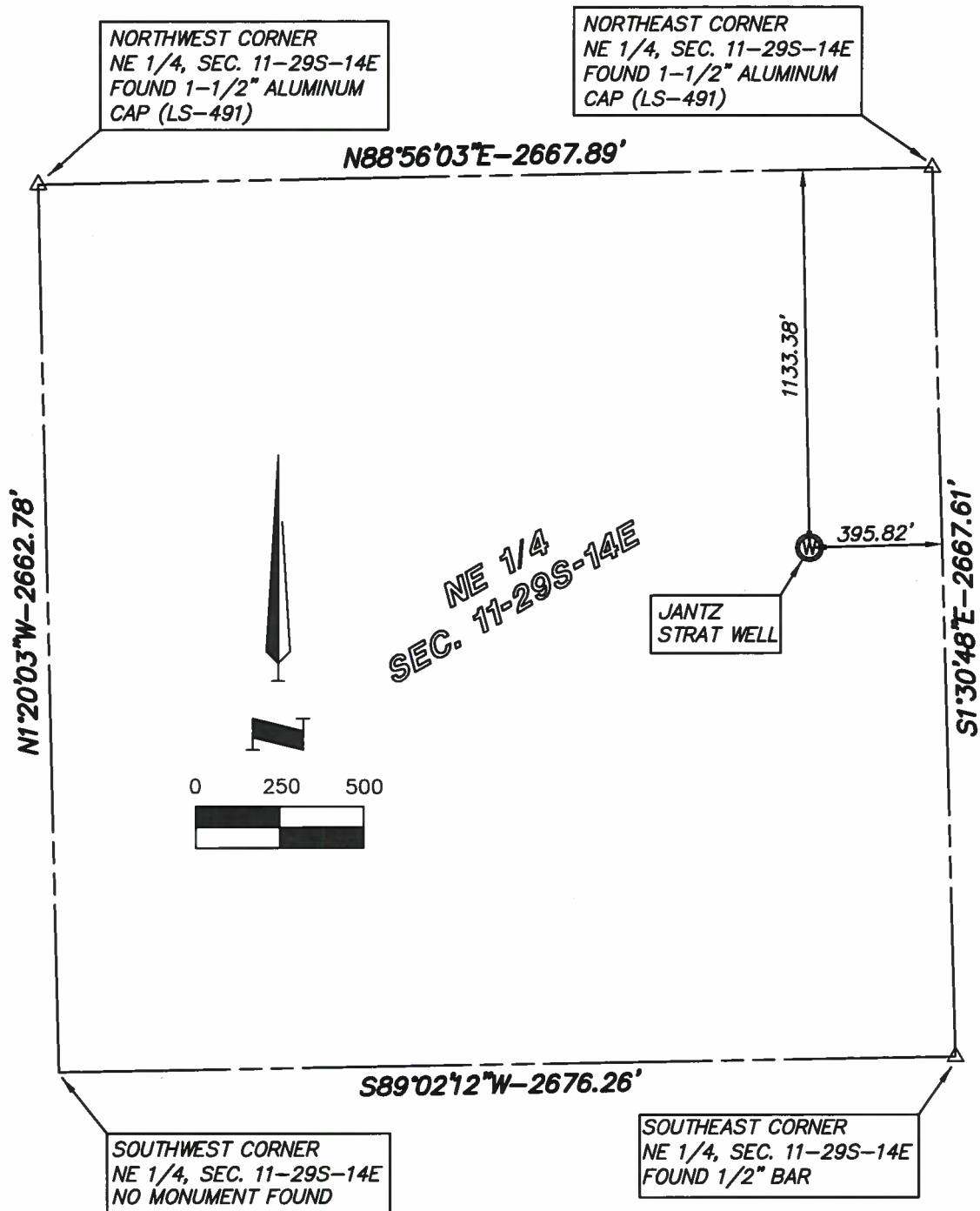


JANTZ STRAT WELL
 Sec 11, T 29 S, R 14 E
 WILSON COUNTY, KANSAS



Description	Ground Elevation	NAD 83 Latitude	NAD 83 Longitude	NAD 27 Latitude	NAD 27 Longitude
Jantz Strat Well	865.61	N37°32'29.58"	W95°50'04.51"	N37°32'29.40"	W95°50'03.58"

GENERAL NOTES:

The bearings shown hereon are based on the State Plane Coordinate System, Kansas South Zone, NAD83

PREPARED FOR:
 WILSON COUNTY HOLDINGS, LLC



SHAFER, KLINE & WARREN, INC.
 11250 CORPORATE AVENUE, LENEXA, KANSAS 66219
 PHONE: 913-888-7800 FAX: 913-888-7868
<http://www.skw-inc.com>

PROJECT NO. 120515-040	DATE 3/15/13	BY SAC
------------------------	--------------	--------