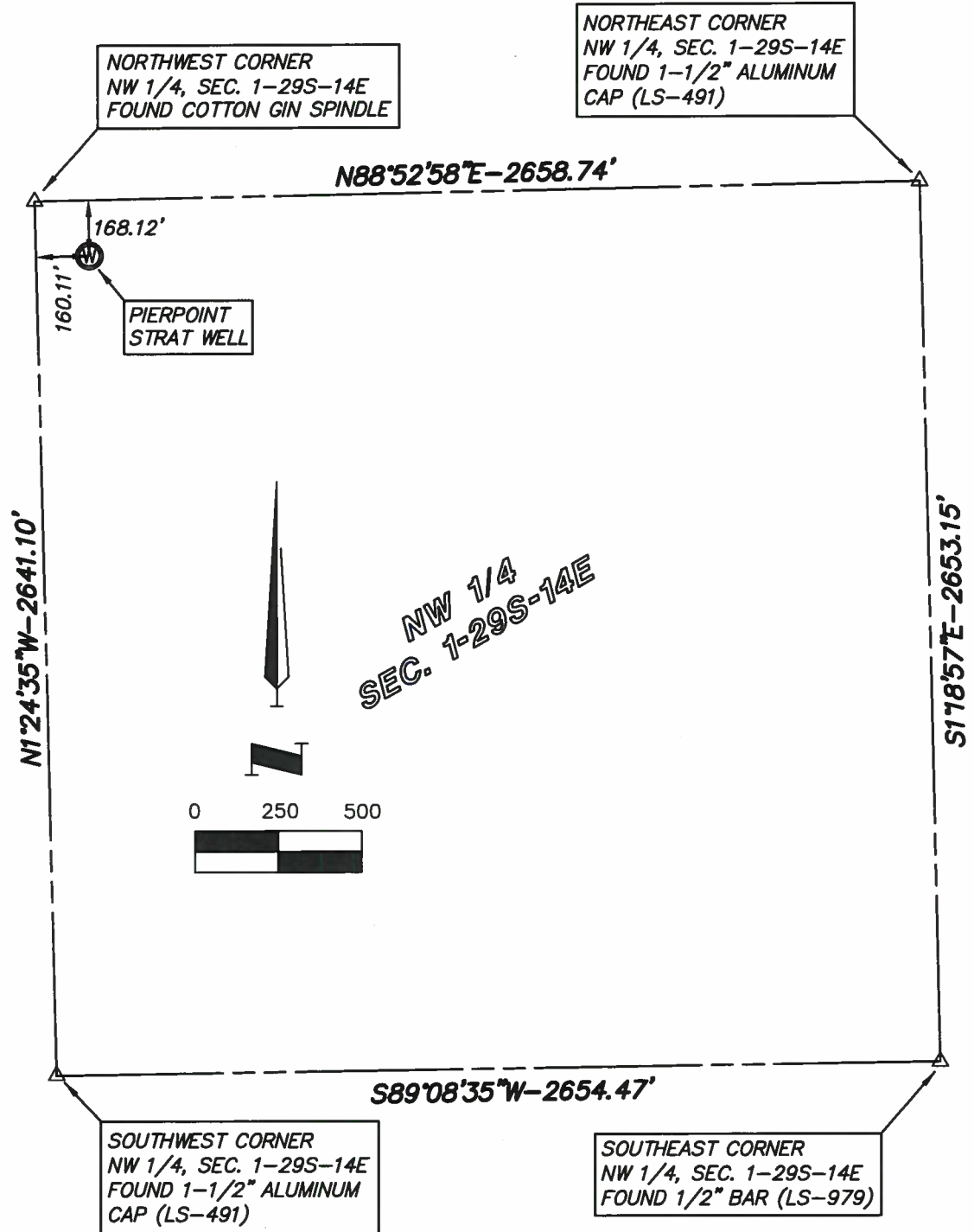


PIERPOINT STRAT WELL  
 Sec 1, T 29 S, R 14 E  
 WILSON COUNTY, KANSAS



Description	Ground Elevation	NAD 83 Latitude	NAD 83 Longitude	NAD 27 Latitude	NAD 27 Longitude
Pierpoint Strat Well	868.28	N37°33'31.43"	W95°49'57.33"	N37°33'31.25"	W95°49'56.39"

GENERAL NOTES:

The bearings shown hereon are based on the State Plane Coordinate System, Kansas South Zone, NAD83

PREPARED FOR:  
 WILSON COUNTY HOLDINGS, LLC



**SHAFER, KLINE & WARREN, INC.**  
 11250 CORPORATE AVENUE, LENEXA, KANSAS 66219  
 PHONE: 913-888-7800 FAX: 913-888-7868  
<http://www.skw-inc.com>

PROJECT NO. 120515-040	DATE 3/15/13	BY SAC
------------------------	--------------	--------