



**TRILOBITE  
TESTING, INC.**

# DRILL STEM TEST REPORT

Berexco LLC  
2020 N. Bramblewood  
Wichita Ks. 67206  
ATTN: Ryan Seib

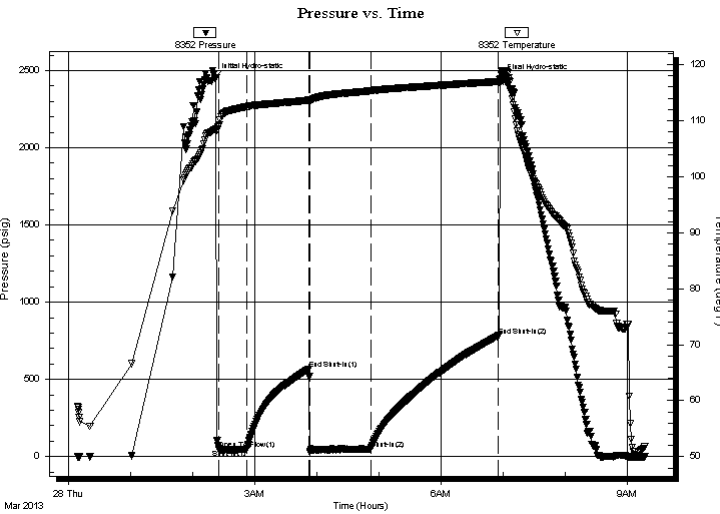
**23-27s-24w Ford Ks.**  
**Tami #1-23**  
Job Ticket: 50957      **DST#: 2**  
Test Start: 2013.03.28 @ 00:08:55

## GENERAL INFORMATION:

Formation: **Cherokee Sd./ Miss.**  
Deviated: No Whipstock:      ft (KB)  
Time Tool Opened: 02:25:10  
Time Test Ended: 09:17:25  
Interval: **4998.00 ft (KB) To 5045.00 ft (KB) (TVD)**  
Total Depth: 5045.00 ft (KB) (TVD)  
Hole Diameter: 7.88 inches Hole Condition: Fair  
Test Type: Conventional Bottom Hole (Reset)  
Tester: Gary Pevoteaux  
Unit No: 56  
Reference Elevations: 2510.00 ft (KB)  
2500.00 ft (CF)  
KB to GR/CF: 10.00 ft

**Serial #: 8352      Outside**  
Press @ RunDepth: 47.43 psig @ 4999.00 ft (KB)      Capacity: 8000.00 psig  
Start Date: 2013.03.28      End Date: 2013.03.28      Last Calib.: 2013.03.28  
Start Time: 00:09:00      End Time: 09:17:25      Time On Btm: 2013.03.28 @ 02:21:40  
Time Off Btm: 2013.03.28 @ 06:56:55

**TEST COMMENT:** IF: Strong blow . B.O.B. in 10 secs.  
IS: No blow .  
FF: Strong blow . B.O.B. in 2 secs. GTS in 22 mins. TSTM  
FS: No blow .



## PRESSURE SUMMARY

Time (Min.)	Pressure (psig)	Temp (deg F)	Annotation
0	2452.74	108.43	Initial Hydro-static
4	49.16	109.14	Open To Flow (1)
31	45.65	112.51	Shut-In(1)
91	567.87	113.66	End Shut-In(1)
92	28.62	113.45	Open To Flow (2)
151	47.43	115.33	Shut-In(2)
274	780.78	116.99	End Shut-In(2)
276	2449.56	117.48	Final Hydro-static

## Recovery

Length (ft)	Description	Volume (bbl)
70.00	Drig.mud	0.34
0.00	GTS	0.00

\* Recovery from multiple tests

## Gas Rates

Choke (inches)	Pressure (psig)	Gas Rate (Mcf/d)



**TRILOBITE  
TESTING, INC.**

# DRILL STEM TEST REPORT

**FLUID SUMMARY**

Berexco LLC

**23-27s-24w Ford Ks.**

2020 N. Bramblewood  
Wichita Ks. 67206

**Tami #1-23**

Job Ticket: 50957

**DST#: 2**

ATTN: Ryan Seib

Test Start: 2013.03.28 @ 00:08:55

## Mud and Cushion Information

Mud Type: Gel Chem

Cushion Type:

Oil API:

deg API

Mud Weight: 9.00 lb/gal

Cushion Length:

ft

Water Salinity:

5400 ppm

Viscosity: 58.00 sec/qt

Cushion Volume:

bbbl

Water Loss: 8.38 in<sup>3</sup>

Gas Cushion Type:

Resistivity: 0.00 ohm.m

Gas Cushion Pressure:

psig

Salinity: 5400.00 ppm

Filter Cake: 0.20 inches

## Recovery Information

Recovery Table

Length ft	Description	Volume bbl
70.00	Drig.mud	0.344
0.00	GTS	0.000

Total Length: 70.00 ft      Total Volume: 0.344 bbl

Num Fluid Samples: 0

Num Gas Bombs: 0

Serial #: none

Laboratory Name:

Laboratory Location:

Recovery Comments:

