



**TRILOBITE
TESTING, INC.**

DRILL STEM TEST REPORT

Eagle Creek Corp.

12-17s-34w-Scott KS

150 N Main STE 905
Wichita KS 67202

Wilkinson #2-18

ATTN: Gary Gensch

Job Ticket: 51423

DST#: 2

Test Start: 2013.02.18 @ 01:49:15

GENERAL INFORMATION:

Formation: **Pleasanton & Marmato**

Deviated: No Whipstock: ft (KB)

Time Tool Opened: 04:34:15

Time Test Ended: 08:43:45

Test Type: Conventional Bottom Hole (Reset)

Tester: Tate Lang

Unit No: 60

Interval: 4416.00 ft (KB) To 4484.00 ft (KB) (TVD)

Total Depth: 4484.00 ft (KB) (TVD)

Hole Diameter: 7.88 inches Hole Condition: Good

Reference Elevations: 3135.00 ft (KB)

3127.00 ft (CF)

KB to GR/CF: 8.00 ft

Serial #: 8373

Inside

Press @ Run Depth: 25.63 psig @ 4432.00 ft (KB)

Start Date: 2013.02.18

End Date:

2013.02.18

Start Time: 01:49:20

End Time:

08:43:44

Capacity: 8000.00 psig

Last Calib.: 2013.02.18

Time On Btm: 2013.02.18 @ 04:33:45

Time Off Btm: 2013.02.18 @ 06:35:45

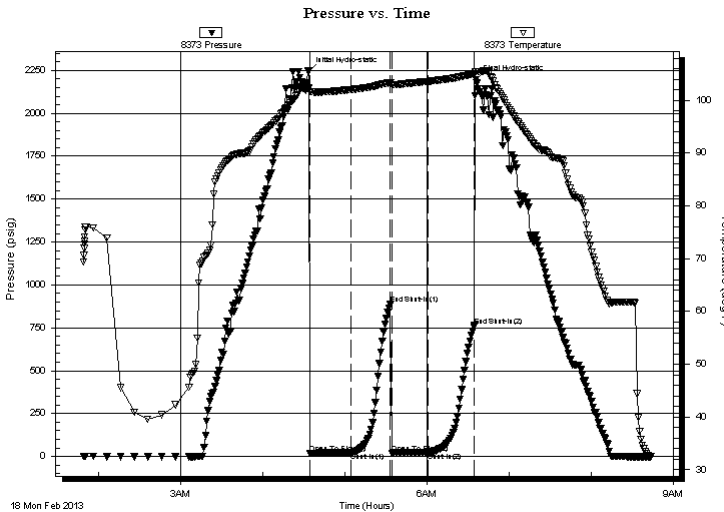
TEST COMMENT: IF-Weak surface blow died in 20 mins.

ISI-Dead no return blow

FF-Dead no blow

FSI-Dead no return blow

PRESSURE SUMMARY



Time (Min.)	Pressure (psig)	Temp (deg F)	Annotation
0	2245.28	102.31	Initial Hydro-static
1	19.62	101.67	Open To Flow (1)
31	22.04	102.06	Shut-In(1)
60	889.32	103.35	End Shut-In(1)
61	20.40	102.97	Open To Flow (2)
87	25.63	103.61	Shut-In(2)
121	762.32	104.97	End Shut-In(2)
122	2196.69	105.43	Final Hydro-static

Recovery

Length (ft)	Description	Volume (bbl)
10.00	2%O 98%M	0.14
2.00	100% Clean Oil	0.03

Gas Rates

	Choke (inches)	Pressure (psig)	Gas Rate (Mcf/d)

* Recovery from multiple tests



**TRILOBITE
TESTING, INC.**

DRILL STEM TEST REPORT

FLUID SUMMARY

Eagle Creek Corp.

12-17s-34w-Scott KS

150 N Main STE 905
Wichita KS 67202

Wilkinson #2-18

Job Ticket: 51423

DST#: 2

ATTN: Gary Gensch

Test Start: 2013.02.18 @ 01:49:15

Mud and Cushion Information

Mud Type: Gel Chem

Cushion Type:

Oil API:

deg API

Mud Weight: 9.00 lb/gal

Cushion Length:

ft

Water Salinity:

ppm

Viscosity: 48.00 sec/qt

Cushion Volume:

bbbl

Water Loss: 6.40 in³

Gas Cushion Type:

Resistivity: ohm.m

Gas Cushion Pressure:

psig

Salinity: 8500.00 ppm

Filter Cake: 1.00 inches

Recovery Information

Recovery Table

Length ft	Description	Volume bbbl
10.00	2%O 98%M	0.140
2.00	100% Clean Oil	0.028

Total Length: 12.00 ft Total Volume: 0.168 bbl

Num Fluid Samples: 0

Num Gas Bombs: 0

Serial #:

Laboratory Name:

Laboratory Location:

Recovery Comments:

