



TRILOBITE TESTING, INC.

DRILL STEM TEST REPORT

Eagle Creek Corp.

12-17s-34w-Scott KS

150 N Main STE 905
Wichita KS 67202

Wilkinson #2-18

ATTN: Gary Gensch

Job Ticket: 51334

DST#: 4

Test Start: 2013.02.19 @ 08:44:17

GENERAL INFORMATION:

Formation: **Marmaton "C"**

Deviated: No Whipstock: ft (KB)

Time Tool Opened: 11:07:47

Time Test Ended: 19:02:47

Test Type: Conventional Bottom Hole (Reset)

Tester: Tate Lang / Brandon

Unit No: 60

Interval: 4494.00 ft (KB) To 4511.00 ft (KB) (TVD)

Reference Elevations: 3135.00 ft (KB)

Total Depth: 4511.00 ft (KB) (TVD)

3127.00 ft (CF)

Hole Diameter: 7.88 inches Hole Condition: Good

KB to GR/CF: 8.00 ft

Serial #: 8373

Inside

Press @ Run Depth: 1041.18 psig @ 4496.00 ft (KB)

Capacity: 8000.00 psig

Start Date: 2013.02.19

End Date:

2013.02.19

Last Calib.:

2013.02.19

Start Time: 08:44:22

End Time:

19:02:47

Time On Btm:

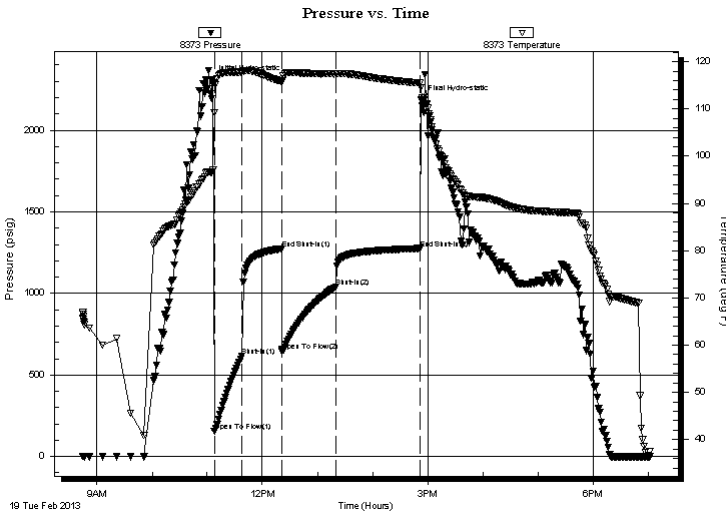
2013.02.19 @ 11:05:17

Time Off Btm:

2013.02.19 @ 14:52:47

TEST COMMENT: IF-B.O.B. in 1min.
ISI-Fair surface blow built to 6.
FF-BOB in 1 1/2 min.
FSI-BOB in 60 min.

PRESSURE SUMMARY



Time (Min.)	Pressure (psig)	Temp (deg F)	Annotation
0	2307.81	96.75	Initial Hydro-static
3	155.69	109.22	Open To Flow (1)
33	615.89	117.75	Shut-In(1)
76	1273.14	115.84	End Shut-In(1)
77	646.12	115.93	Open To Flow (2)
135	1041.18	117.41	Shut-In(2)
227	1275.25	115.48	End Shut-In(2)
228	2185.54	114.53	Final Hydro-static

Recovery

Length (ft)	Description	Volume (bbl)
126.00	gocm 30%g 30%o 40%m	1.77
2205.00	go 25%g 75%o	30.93
630.00	go 20%g 80%o	8.84

Gas Rates

	Choke (inches)	Pressure (psig)	Gas Rate (Mcf/d)

* Recovery from multiple tests



**TRILOBITE
TESTING, INC.**

DRILL STEM TEST REPORT

FLUID SUMMARY

Eagle Creek Corp.

12-17s-34w-Scott KS

150 N Main STE 905
Wichita KS 67202

Wilkinson #2-18

Job Ticket: 51334

DST#: 4

ATTN: Gary Gensch

Test Start: 2013.02.19 @ 08:44:17

Mud and Cushion Information

Mud Type: Gel Chem
Mud Weight: 9.00 lb/gal
Viscosity: 60.00 sec/qt
Water Loss: 6.40 in³
Resistivity: ohm.m
Salinity: 9000.00 ppm
Filter Cake: 1.00 inches

Cushion Type:
Cushion Length: ft
Cushion Volume: bbl
Gas Cushion Type:
Gas Cushion Pressure: psig

Oil API: 29 deg API
Water Salinity: 0 ppm

Recovery Information

Recovery Table

Length ft	Description	Volume bbl
126.00	gocm 30%g 30%o 40%m	1.767
2205.00	go 25%g 75%o	30.930
630.00	go 20%g 80%o	8.837

Total Length: 2961.00 ft Total Volume: 41.534 bbl

Num Fluid Samples: 0

Num Gas Bombs: 0

Serial #:

Laboratory Name:

Laboratory Location:

Recovery Comments: 30@50=29

