



## DRILL STEM TEST REPORT

Prepared For: **Baird Oil Co. LLC**

PO Box 428  
Logan KS 67646

ATTN: Richard Bell

**23-3s-22w Norton,KS**

**Weiser-Field Unit #1-23**

Start Date: 2013.04.07 @ 04:50:00

End Date: 2013.04.07 @ 10:25:45

Job Ticket #: 50645                      DST #: 1

Trilobite Testing, Inc  
PO Box 362 Hays, KS 67601  
ph: 785-625-4778 fax: 785-625-5620

Printed: 2013.04.12 @ 15:34:48



**TRILOBITE  
TESTING, INC.**

# DRILL STEM TEST REPORT

Baird Oil Co. LLC

PO Box 428  
Logan KS 67646

ATTN: Richard Bell

**Weiser-Field Unit #1-23**

**23-3s-22w Norton,KS**

Job Ticket: 50645

**DST#: 1**

Test Start: 2013.04.07 @ 04:50:00

## GENERAL INFORMATION:

Formation: **LKC A**

Deviated: No Whipstock: ft (KB)

Time Tool Opened: 07:04:30

Time Test Ended: 10:25:45

Test Type: Conventional Bottom Hole (Initial)

Tester: Wilbur Steinbeck

Unit No: 44

**Interval: 3640.00 ft (KB) To 3656.00 ft (KB) (TVD)**

Reference Elevations: 2398.00 ft (KB)

Total Depth: 3656.00 ft (KB) (TVD)

2390.00 ft (CF)

Hole Diameter: 7.88 inches Hole Condition: Fair

KB to GR/CF: 8.00 ft

**Serial #: 8353 Outside**

Press @ Run Depth: 41.76 psig @ 3641.00 ft (KB)

Capacity: 8000.00 psig

Start Date: 2013.04.07 End Date: 2013.04.07

Last Calib.: 2013.04.07

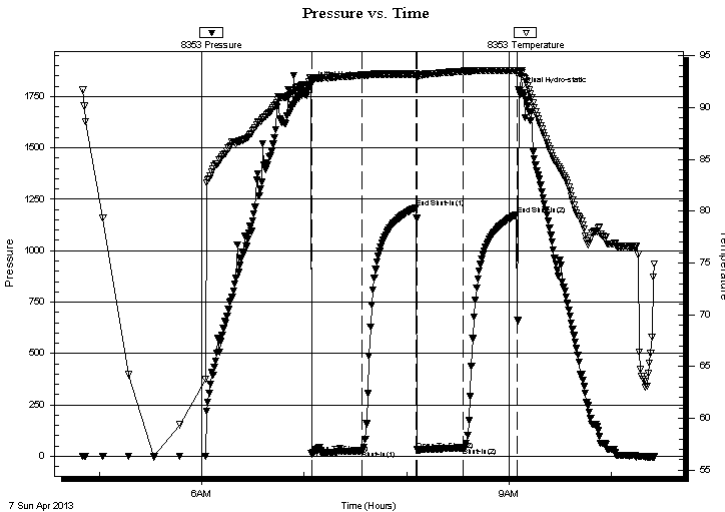
Start Time: 04:50:15 End Time: 10:25:45

Time On Btm: 2013.04.07 @ 07:04:00

Time Off Btm: 2013.04.07 @ 09:06:00

**TEST COMMENT:** 30 IF; Built to 1/4"  
30 IS; No Blow  
30 FF; Built to 1/4"  
30 FS; No Blow

## PRESSURE SUMMARY



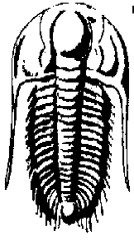
| Time (Min.) | Pressure (psig) | Temp (deg F) | Annotation           |
|-------------|-----------------|--------------|----------------------|
| 0           | 1802.34         | 92.90        | Initial Hydro-static |
| 1           | 14.98           | 92.67        | Open To Flow (1)     |
| 30          | 27.34           | 93.12        | Shut-In(1)           |
| 62          | 1209.78         | 93.23        | End Shut-In(1)       |
| 62          | 31.04           | 92.98        | Open To Flow (2)     |
| 89          | 41.76           | 93.50        | Shut-In(2)           |
| 121         | 1175.83         | 93.57        | End Shut-In(2)       |
| 122         | 1773.18         | 93.32        | Final Hydro-static   |

## Recovery

| Length (ft) | Description         | Volume (bbl) |
|-------------|---------------------|--------------|
| 63.00       | OMCW 10%O 30%M 60%W | 0.31         |
| 2.00        | Oil                 | 0.01         |
|             |                     |              |
|             |                     |              |
|             |                     |              |

## Gas Rates

|  | Choke (inches) | Pressure (psig) | Gas Rate (Mcf/d) |
|--|----------------|-----------------|------------------|
|  |                |                 |                  |



# TRILOBITE TESTING, INC.

## DRILL STEM TEST REPORT

Baird Oil Co. LLC

**Weiser-Field Unit #1-23**

PO Box 428  
Logan KS 67646

**23-3s-22w Norton, KS**

ATTN: Richard Bell

Job Ticket: 50645      **DST#: 1**

Test Start: 2013.04.07 @ 04:50:00

### GENERAL INFORMATION:

Formation: **LKC A**

Deviated: No Whipstock: ft (KB)

Test Type: Conventional Bottom Hole (Initial)

Time Tool Opened: 07:04:30

Tester: Wilbur Steinbeck

Time Test Ended: 10:25:45

Unit No: 44

**Interval: 3640.00 ft (KB) To 3656.00 ft (KB) (TVD)**

Reference Elevations: 2398.00 ft (KB)

Total Depth: 3656.00 ft (KB) (TVD)

2390.00 ft (CF)

Hole Diameter: 7.88 inches Hole Condition: Fair

KB to GR/CF: 8.00 ft

**Serial #: 8360**      **Inside**

Press @ Run Depth:              psig @ 3641.00 ft (KB)

Capacity: 8000.00 psig

Start Date: 2013.04.07

End Date: 2013.04.07

Last Calib.: 2013.04.07

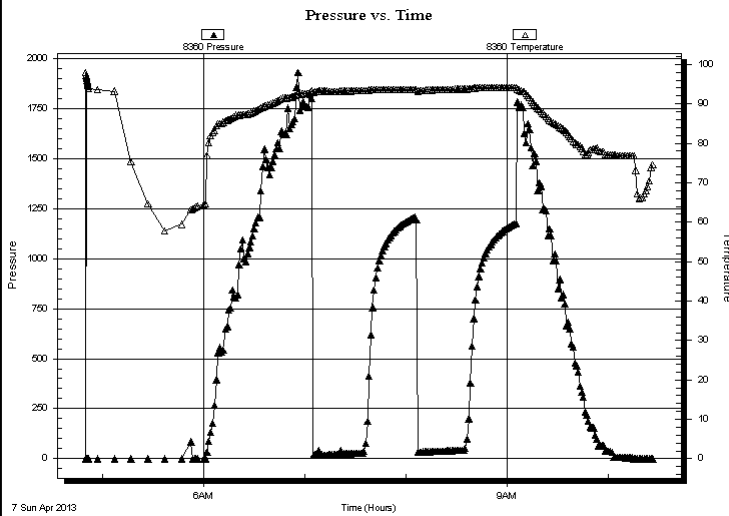
Start Time: 04:50:05

End Time: 10:25:59

Time On Btm:

Time Off Btm:

**TEST COMMENT:** 30 IF; Built to 1/4"  
30 IS; No Blow  
30 FF; Built to 1/4"  
30 FS; No Blow



### PRESSURE SUMMARY

| Time (Min.) | Pressure (psig) | Temp (deg F) | Annotation |
|-------------|-----------------|--------------|------------|
|             |                 |              |            |
|             |                 |              |            |
|             |                 |              |            |
|             |                 |              |            |
|             |                 |              |            |
|             |                 |              |            |
|             |                 |              |            |
|             |                 |              |            |
|             |                 |              |            |
|             |                 |              |            |
|             |                 |              |            |
|             |                 |              |            |
|             |                 |              |            |
|             |                 |              |            |
|             |                 |              |            |
|             |                 |              |            |
|             |                 |              |            |
|             |                 |              |            |
|             |                 |              |            |
|             |                 |              |            |
|             |                 |              |            |
|             |                 |              |            |
|             |                 |              |            |
|             |                 |              |            |
|             |                 |              |            |

### Recovery

| Length (ft) | Description         | Volume (bbl) |
|-------------|---------------------|--------------|
| 63.00       | OMCW 10%O 30%M 60%W | 0.31         |
| 2.00        | Oil                 | 0.01         |
|             |                     |              |
|             |                     |              |
|             |                     |              |
|             |                     |              |
|             |                     |              |

### Gas Rates

|  | Choke (inches) | Pressure (psig) | Gas Rate (Mcf/d) |
|--|----------------|-----------------|------------------|
|  |                |                 |                  |



**TRILOBITE  
TESTING, INC.**

# DRILL STEM TEST REPORT

**TOOL DIAGRAM**

Baird Oil Co. LLC

**Weiser-Field Unit #1-23**

PO Box 428  
Logan KS 67646

**23-3s-22w Norton,KS**

Job Ticket: 50645

**DST#: 1**

ATTN: Richard Bell

Test Start: 2013.04.07 @ 04:50:00

## Tool Information

|                           |                    |                       |                                |                                    |
|---------------------------|--------------------|-----------------------|--------------------------------|------------------------------------|
| Drill Pipe:               | Length: 3509.00 ft | Diameter: 3.80 inches | Volume: 49.22 bbl              | Tool Weight: 2000.00 lb            |
| Heavy Wt. Pipe:           | Length: 0.00 ft    | Diameter: 0.00 inches | Volume: 0.00 bbl               | Weight set on Packer: 25000.00 lb  |
| Drill Collar:             | Length: 120.00 ft  | Diameter: 2.25 inches | Volume: 0.59 bbl               | Weight to Pull Loose: 60000.00 lb  |
|                           |                    |                       | <u>Total Volume: 49.81 bbl</u> | Tool Chased 1.00 ft                |
| Drill Pipe Above KB:      | 8.00 ft            |                       |                                | String Weight: Initial 48000.00 lb |
| Depth to Top Packer:      | 3640.00 ft         |                       |                                | Final 48000.00 lb                  |
| Depth to Bottom Packer:   | ft                 |                       |                                |                                    |
| Interval between Packers: | 16.00 ft           |                       |                                |                                    |
| Tool Length:              | 35.00 ft           |                       |                                |                                    |
| Number of Packers:        | 2                  | Diameter: 6.75 inches |                                |                                    |

Tool Comments:

## Tool Description

| Tool Description          | Length (ft)  | Serial No. | Position | Depth (ft) | Accum. Lengths                |
|---------------------------|--------------|------------|----------|------------|-------------------------------|
| Shut In Tool              | 5.00         |            |          | 3626.00    |                               |
| Hydraulic tool            | 5.00         |            |          | 3631.00    |                               |
| Packer                    | 5.00         |            |          | 3636.00    | 19.00 Bottom Of Top Packer    |
| Packer                    | 4.00         |            |          | 3640.00    |                               |
| Stubb                     | 1.00         |            |          | 3641.00    |                               |
| Recorder                  | 0.00         | 8360       | Inside   | 3641.00    |                               |
| Recorder                  | 0.00         | 8353       | Outside  | 3641.00    |                               |
| Perforations              | 12.00        |            |          | 3653.00    |                               |
| Bullnose                  | 3.00         |            |          | 3656.00    | 16.00 Bottom Packers & Anchor |
| <b>Total Tool Length:</b> | <b>35.00</b> |            |          |            |                               |



**TRILOBITE  
TESTING, INC.**

# DRILL STEM TEST REPORT

**FLUID SUMMARY**

Baird Oil Co. LLC

**Weiser-Field Unit #1-23**

PO Box 428  
Logan KS 67646

**23-3s-22w Norton,KS**

Job Ticket: 50645

**DST#: 1**

ATTN: Richard Bell

Test Start: 2013.04.07 @ 04:50:00

## Mud and Cushion Information

Mud Type: Gel Chem

Cushion Type:

Oil API:

deg API

Mud Weight: 9.00 lb/gal

Cushion Length:

ft

Water Salinity:

ppm

Viscosity: 60.00 sec/qt

Cushion Volume:

bbbl

Water Loss: 5.59 in<sup>3</sup>

Gas Cushion Type:

Resistivity: ohm.m

Gas Cushion Pressure:

psig

Salinity: 900.00 ppm

Filter Cake: inches

## Recovery Information

Recovery Table

| Length<br>ft | Description         | Volume<br>bbl |
|--------------|---------------------|---------------|
| 63.00        | OMCW 10%O 30%M 60%W | 0.310         |
| 2.00         | Oil                 | 0.010         |

Total Length: 65.00 ft      Total Volume: 0.320 bbl

Num Fluid Samples: 0

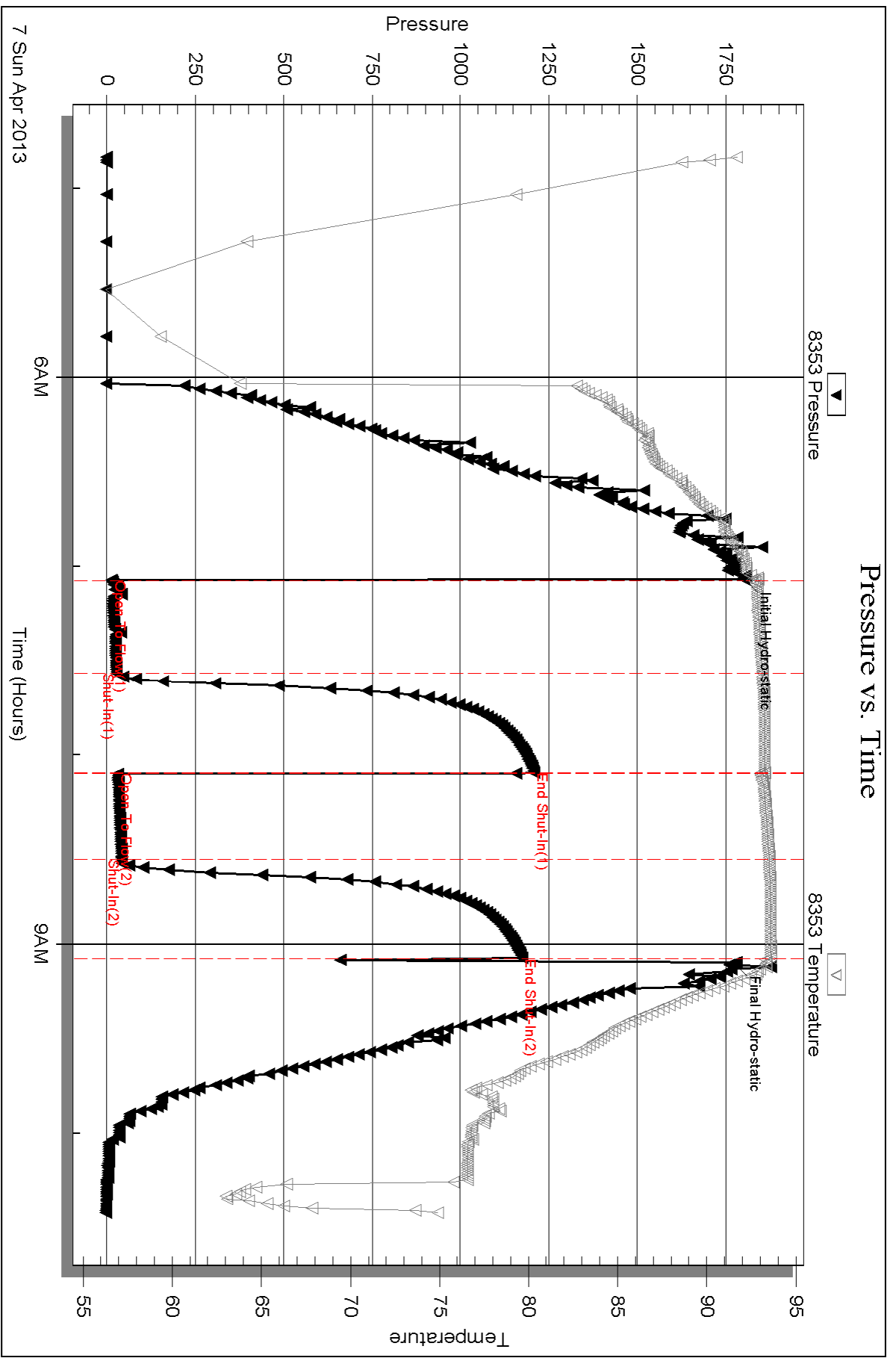
Num Gas Bombs: 0

Serial #:

Laboratory Name:

Laboratory Location:

Recovery Comments:



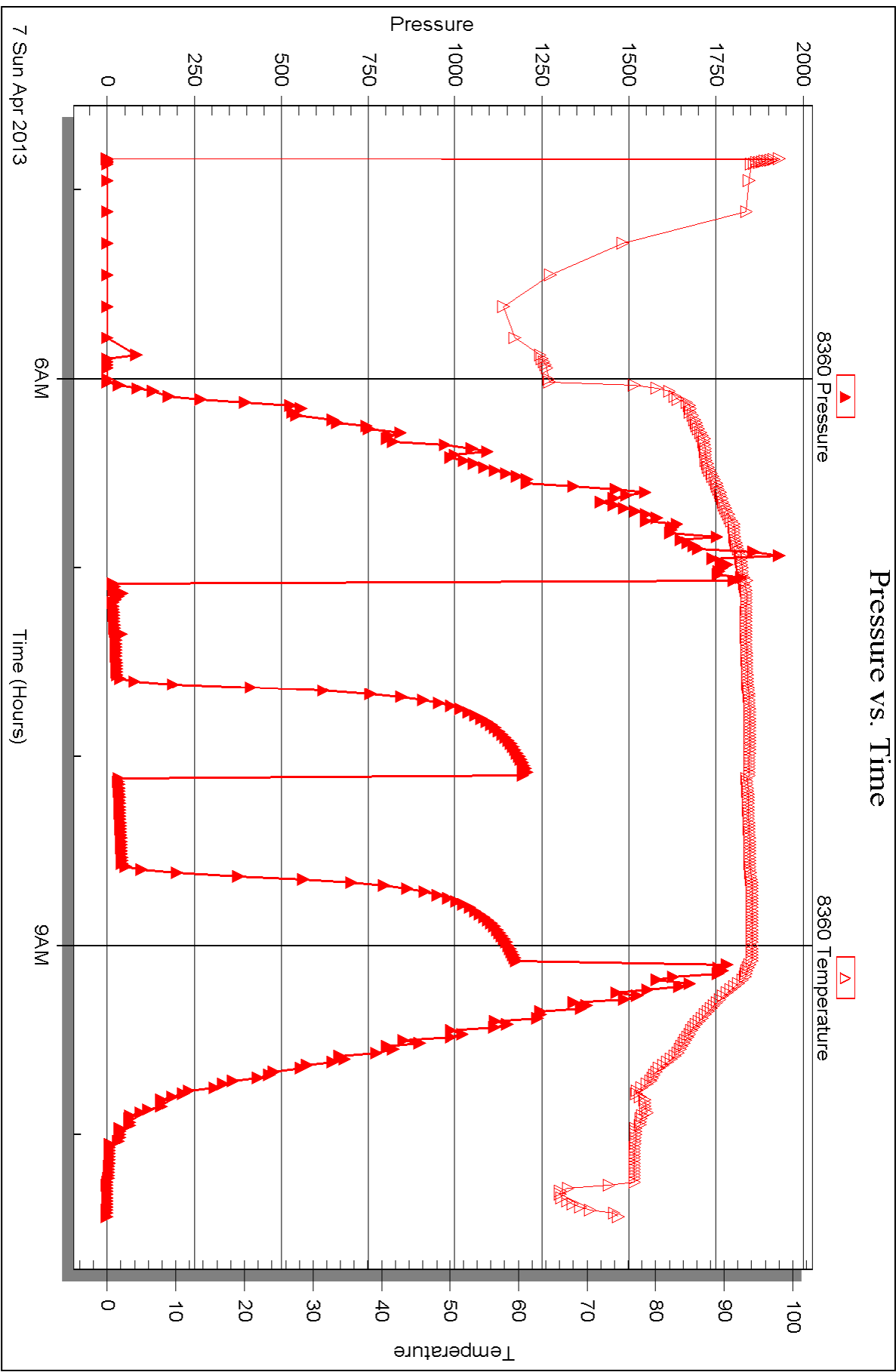
Serial #: 8360

Inside

Baird Oil Co. LLC

23-35-22w Norton KS

DST Test Number: 1





## DRILL STEM TEST REPORT

Prepared For: **Baird Oil Co. LLC**

PO Box 428  
Logan KS 67646

ATTN: Richard Bell

**23-3s-22w Norton,KS**

**Weiser-Field Unit #1-23**

Start Date: 2013.04.07 @ 18:00:00

End Date: 2013.04.08 @ 00:25:45

Job Ticket #: 50646                      DST #: 2

Trilobite Testing, Inc  
PO Box 362 Hays, KS 67601  
ph: 785-625-4778 fax: 785-625-5620

Printed: 2013.04.12 @ 15:34:01





**TRILOBITE TESTING, INC.**

# DRILL STEM TEST REPORT

Baird Oil Co. LLC

**Weiser-Field Unit #1-23**

PO Box 428  
Logan KS 67646

**23-3s-22w Norton,KS**

ATTN: Richard Bell

Job Ticket: 50646

**DST#: 2**

Test Start: 2013.04.07 @ 18:00:00

## GENERAL INFORMATION:

Formation: **LKC D**  
 Deviated: No Whipstock: ft (KB)  
 Test Type: Conventional Bottom Hole (Reset)  
 Time Tool Opened: 19:33:45  
 Tester: Wilbur Steinbeck  
 Time Test Ended: 00:25:45  
 Unit No: 44  
 Interval: **3686.00 ft (KB) To 3704.00 ft (KB) (TVD)**  
 Reference Elevations: 2398.00 ft (KB)  
 Total Depth: 3704.00 ft (KB) (TVD)  
 2390.00 ft (CF)  
 Hole Diameter: 7.88 inches  
 Hole Condition: Fair  
 KB to GR/CF: 8.00 ft

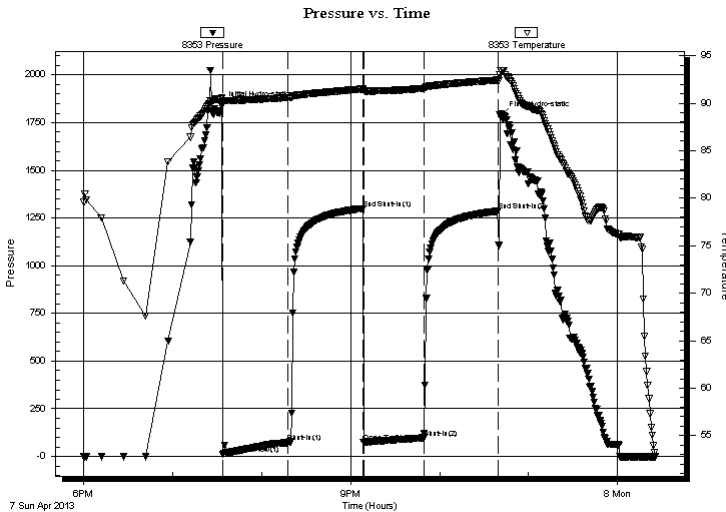
## Serial #: 8353

**Outside**

Press @ Run Depth: 97.90 psig @ 3687.00 ft (KB) Capacity: 8000.00 psig  
 Start Date: 2013.04.07 End Date: 2013.04.08 Last Calib.: 2013.04.08  
 Start Time: 18:00:15 End Time: 00:25:45 Time On Btm: 2013.04.07 @ 19:33:15  
 Time Off Btm: 2013.04.07 @ 22:41:45

TEST COMMENT: 45 IF; Built to 6"  
 45 IS; No Blow  
 45 FF; Built to 3 1/4"  
 45 FS; No Blow

## PRESSURE SUMMARY



| Time (Min.) | Pressure (psig) | Temp (deg F) | Annotation           |
|-------------|-----------------|--------------|----------------------|
| 0           | 1836.75         | 90.55        | Initial Hydro-static |
| 1           | 12.77           | 90.18        | Open To Flow (1)     |
| 45          | 72.65           | 90.59        | Shut-In(1)           |
| 95          | 1298.97         | 91.49        | End Shut-In(1)       |
| 96          | 74.87           | 91.29        | Open To Flow (2)     |
| 136         | 97.90           | 91.56        | Shut-In(2)           |
| 186         | 1286.44         | 92.44        | End Shut-In(2)       |
| 189         | 1784.79         | 93.41        | Final Hydro-static   |

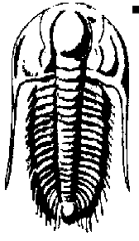
## Recovery

| Length (ft) | Description   | Volume (bbl) |
|-------------|---------------|--------------|
| 180.00      | MCW 15%M 85%W | 1.43         |
|             |               |              |
|             |               |              |
|             |               |              |
|             |               |              |

## Gas Rates

| Choke (inches) | Pressure (psig) | Gas Rate (Mcf/d) |
|----------------|-----------------|------------------|
|                |                 |                  |

\* Recovery from multiple tests



# TRILOBITE TESTING, INC.

## DRILL STEM TEST REPORT

Baird Oil Co. LLC

**Weiser-Field Unit #1-23**

PO Box 428  
Logan KS 67646

**23-3s-22w Norton,KS**

ATTN: Richard Bell

Job Ticket: 50646

**DST#: 2**

Test Start: 2013.04.07 @ 18:00:00

### GENERAL INFORMATION:

Formation: **LKC D**

Deviated: No Whipstock: ft (KB)

Time Tool Opened: 19:33:45

Time Test Ended: 00:25:45

Test Type: Conventional Bottom Hole (Reset)

Tester: Wilbur Steinbeck

Unit No: 44

**Interval: 3686.00 ft (KB) To 3704.00 ft (KB) (TVD)**

Reference Elevations: 2398.00 ft (KB)

Total Depth: 3704.00 ft (KB) (TVD)

2390.00 ft (CF)

Hole Diameter: 7.88 inchesHole Condition: Fair

KB to GR/CF: 8.00 ft

**Serial #: 8360**

**Inside**

Press @RunDepth: psig @ 3687.00 ft (KB)

Capacity: 8000.00 psig

Start Date: 2013.04.07 End Date: 2013.04.08

Last Calib.: 2013.04.08

Start Time: 18:00:05 End Time: 00:25:59

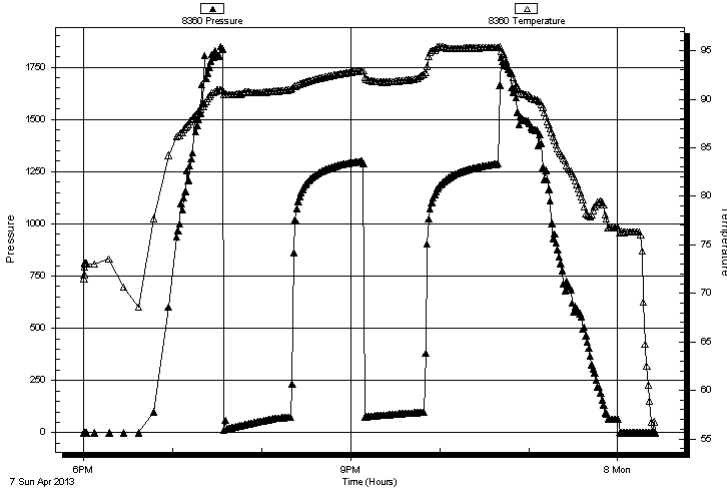
Time On Btm:

Time Off Btm:

**TEST COMMENT:** 45 IF; Built to 6"  
45 IS; No Blow  
45 FF; Built to 3 1/4"  
45 FS; No Blow

### PRESSURE SUMMARY

Pressure vs. Time



| Time (Min.) | Pressure (psig) | Temp (deg F) | Annotation |
|-------------|-----------------|--------------|------------|
|-------------|-----------------|--------------|------------|

### Recovery

### Gas Rates

| Length (ft) | Description   | Volume (bbl) |
|-------------|---------------|--------------|
| 180.00      | MCW 15%M 85%W | 1.43         |
|             |               |              |
|             |               |              |
|             |               |              |
|             |               |              |

|  | Choke (inches) | Pressure (psig) | Gas Rate (Mcf/d) |
|--|----------------|-----------------|------------------|
|--|----------------|-----------------|------------------|

\* Recovery from multiple tests



**TRILOBITE  
TESTING, INC.**

# DRILL STEM TEST REPORT

**TOOL DIAGRAM**

Baird Oil Co. LLC

**Weiser-Field Unit #1-23**

PO Box 428  
Logan KS 67646

**23-3s-22w Norton,KS**

Job Ticket: 50646

**DST#: 2**

ATTN: Richard Bell

Test Start: 2013.04.07 @ 18:00:00

## Tool Information

|                           |                    |                       |                                |                                    |
|---------------------------|--------------------|-----------------------|--------------------------------|------------------------------------|
| Drill Pipe:               | Length: 3569.00 ft | Diameter: 3.80 inches | Volume: 50.06 bbl              | Tool Weight: 2000.00 lb            |
| Heavy Wt. Pipe:           | Length: 0.00 ft    | Diameter: 0.00 inches | Volume: 0.00 bbl               | Weight set on Packer: 25000.00 lb  |
| Drill Collar:             | Length: 120.00 ft  | Diameter: 2.25 inches | Volume: 0.59 bbl               | Weight to Pull Loose: 55000.00 lb  |
|                           |                    |                       | <u>Total Volume: 50.65 bbl</u> | Tool Chased 1.00 ft                |
| Drill Pipe Above KB:      | 22.00 ft           |                       |                                | String Weight: Initial 48000.00 lb |
| Depth to Top Packer:      | 3686.00 ft         |                       |                                | Final 48000.00 lb                  |
| Depth to Bottom Packer:   | ft                 |                       |                                |                                    |
| Interval between Packers: | 18.00 ft           |                       |                                |                                    |
| Tool Length:              | 37.00 ft           |                       |                                |                                    |
| Number of Packers:        | 2                  | Diameter: 6.75 inches |                                |                                    |

Tool Comments:

## Tool Description

| Tool Description          | Length (ft)  | Serial No. | Position | Depth (ft) | Accum. Lengths                |
|---------------------------|--------------|------------|----------|------------|-------------------------------|
| Shut In Tool              | 5.00         |            |          | 3672.00    |                               |
| Hydraulic tool            | 5.00         |            |          | 3677.00    |                               |
| Packer                    | 5.00         |            |          | 3682.00    | 19.00 Bottom Of Top Packer    |
| Packer                    | 4.00         |            |          | 3686.00    |                               |
| Stubb                     | 1.00         |            |          | 3687.00    |                               |
| Recorder                  | 0.00         | 8360       | Inside   | 3687.00    |                               |
| Recorder                  | 0.00         | 8353       | Outside  | 3687.00    |                               |
| Perforations              | 14.00        |            |          | 3701.00    |                               |
| Bullnose                  | 3.00         |            |          | 3704.00    | 18.00 Bottom Packers & Anchor |
| <b>Total Tool Length:</b> | <b>37.00</b> |            |          |            |                               |



**TRILOBITE  
TESTING, INC.**

**DRILL STEM TEST REPORT**

**FLUID SUMMARY**

Baird Oil Co. LLC

**Weiser-Field Unit #1-23**

PO Box 428  
Logan KS 67646

**23-3s-22w Norton,KS**

Job Ticket: 50646

**DST#: 2**

ATTN: Richard Bell

Test Start: 2013.04.07 @ 18:00:00

**Mud and Cushion Information**

Mud Type: Gel Chem

Cushion Type:

Oil API:

deg API

Mud Weight: 9.00 lb/gal

Cushion Length:

ft

Water Salinity:

ppm

Viscosity: 60.00 sec/qt

Cushion Volume:

bbbl

Water Loss: 5.59 in<sup>3</sup>

Gas Cushion Type:

Resistivity: ohm.m

Gas Cushion Pressure:

psig

Salinity: 900.00 ppm

Filter Cake: inches

**Recovery Information**

Recovery Table

| Length<br>ft | Description   | Volume<br>bbl |
|--------------|---------------|---------------|
| 180.00       | MCW 15%M 85%W | 1.432         |

Total Length: 180.00 ft      Total Volume: 1.432 bbl

Num Fluid Samples: 0

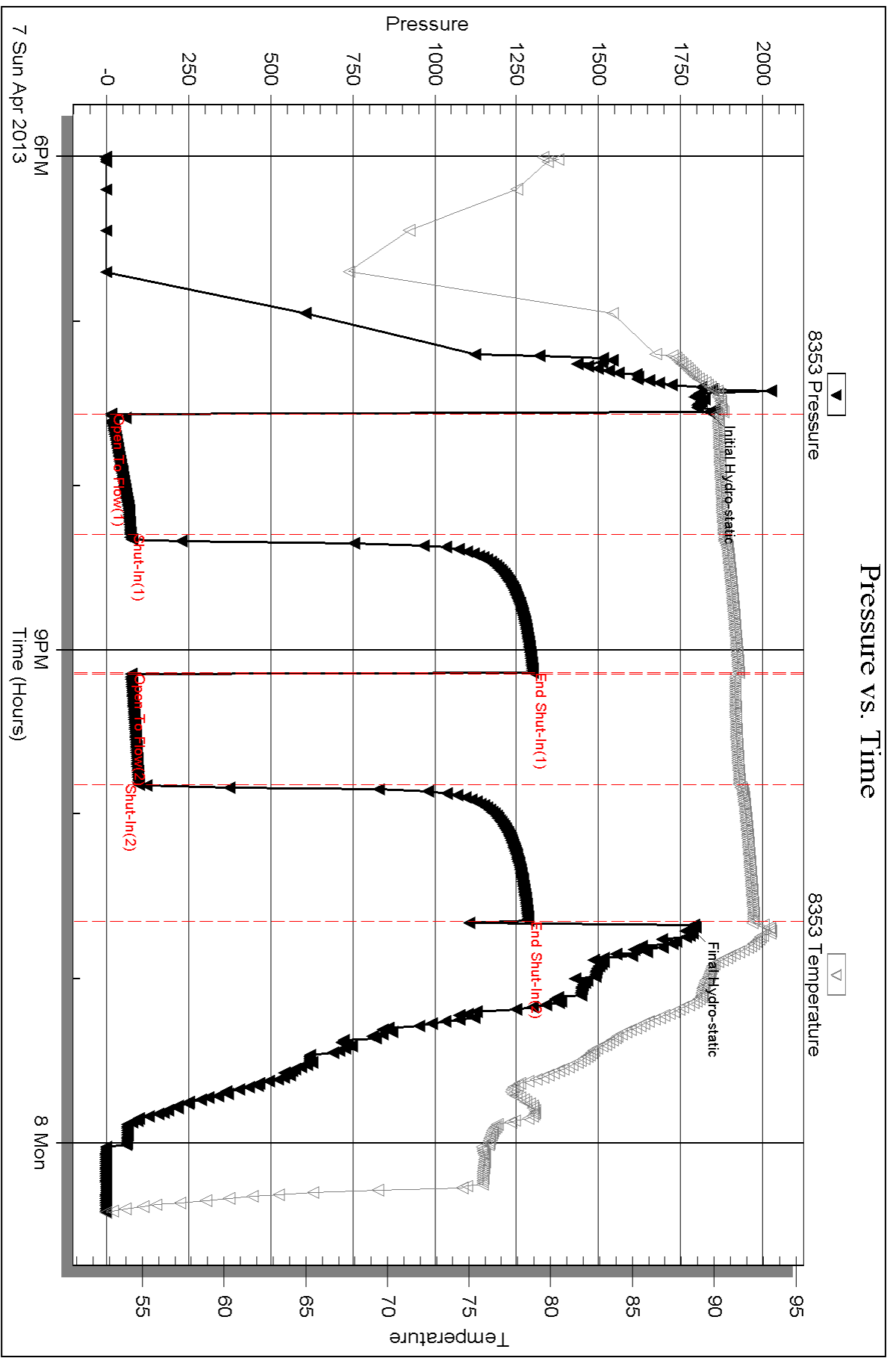
Num Gas Bombs: 0

Serial #:

Laboratory Name:

Laboratory Location:

Recovery Comments: RW .133@51 DEG F=75000



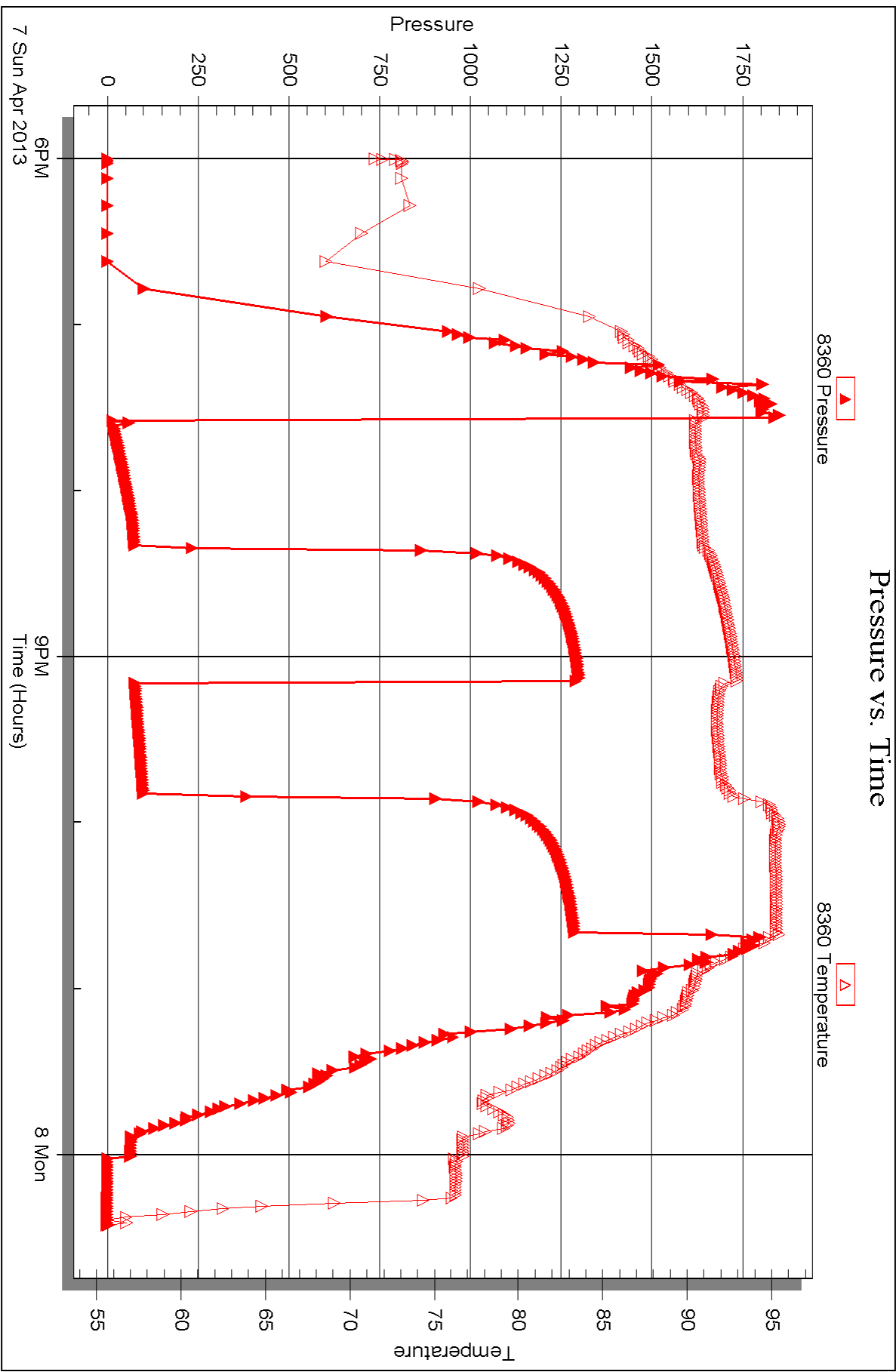
Serial #: 8360

Inside

Baird Oil Co. LLC

23-3s-22w Norton KS

DST Test Number: 2





## DRILL STEM TEST REPORT

Prepared For: **Baird Oil Co. LLC**

PO Box 428  
Logan KS 67646

ATTN: Richard Bell

**23-3s-22w Norton,KS**

**Weiser-Field Unit #1-23**

Start Date: 2013.04.08 @ 14:25:00

End Date: 2013.04.08 @ 18:29:30

Job Ticket #: 50647                      DST #: 3

Trilobite Testing, Inc  
PO Box 362 Hays, KS 67601  
ph: 785-625-4778 fax: 785-625-5620

Printed: 2013.04.12 @ 15:31:46



**TRILOBITE TESTING, INC.**

# DRILL STEM TEST REPORT

Baird Oil Co. LLC

**Weiser-Field Unit #1-23**

PO Box 428  
Logan KS 67646

**23-3s-22w Norton,KS**

ATTN: Richard Bell

Job Ticket: 50647

**DST#: 3**

Test Start: 2013.04.08 @ 14:25:00

## GENERAL INFORMATION:

Formation: **LKC J**

Deviated: No Whipstock: ft (KB)

Time Tool Opened: 16:04:00

Time Test Ended: 18:29:30

Test Type: Conventional Bottom Hole (Reset)

Tester: Wilbur Steinbeck

Unit No: 44

**Interval: 3772.00 ft (KB) To 3805.00 ft (KB) (TVD)**

Reference Elevations: 2398.00 ft (KB)

Total Depth: 3805.00 ft (KB) (TVD)

2390.00 ft (CF)

Hole Diameter: 7.88 inches Hole Condition: Fair

KB to GR/CF: 8.00 ft

**Serial #: 8353 Outside**

Press @ Run Depth: 13.58 psig @ 3773.00 ft (KB)

Capacity: 8000.00 psig

Start Date: 2013.04.08 End Date: 2013.04.08

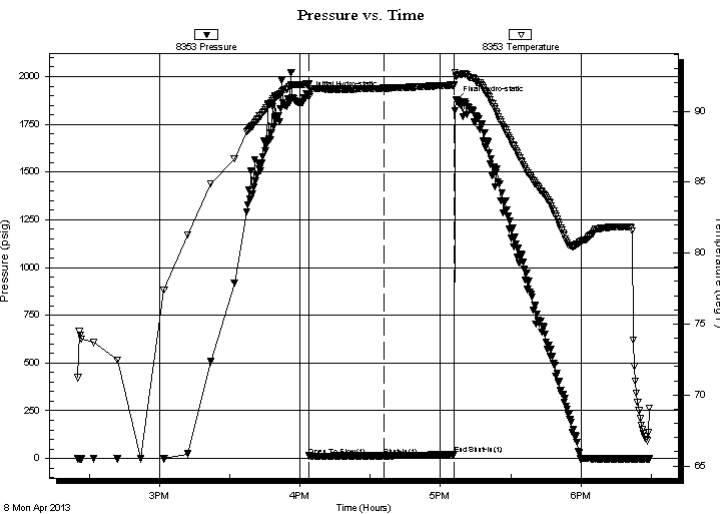
Last Calib.: 2013.04.08

Start Time: 14:25:15 End Time: 18:29:30

Time On Btm: 2013.04.08 @ 16:03:45

Time Off Btm: 2013.04.08 @ 17:06:45

**TEST COMMENT:** 30 IF; Surface Blow died in 20 min  
30 IS; No Blow



## PRESSURE SUMMARY

| Time (Min.) | Pressure (psig) | Temp (deg F) | Annotation           |
|-------------|-----------------|--------------|----------------------|
| 0           | 1901.98         | 91.91        | Initial Hydro-static |
| 1           | 13.34           | 91.04        | Open To Flow (1)     |
| 32          | 13.58           | 91.63        | Shut-In(1)           |
| 63          | 20.81           | 91.85        | End Shut-In(1)       |
| 63          | 1876.47         | 92.44        | Final Hydro-static   |

## Recovery

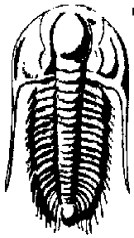
| Length (ft) | Description | Volume (bbl) |
|-------------|-------------|--------------|
| 1.00        | Mud         | 0.00         |
|             |             |              |
|             |             |              |
|             |             |              |
|             |             |              |

\* Recovery from multiple tests

## Gas Rates

| Choke (inches) | Pressure (psig) | Gas Rate (Mcf/d) |
|----------------|-----------------|------------------|
|                |                 |                  |





**TRILOBITE TESTING, INC.**

## DRILL STEM TEST REPORT

Baird Oil Co. LLC

**Weiser-Field Unit #1-23**

PO Box 428  
Logan KS 67646

**23-3s-22w Norton,KS**

ATTN: Richard Bell

Job Ticket: 50647

**DST#: 3**

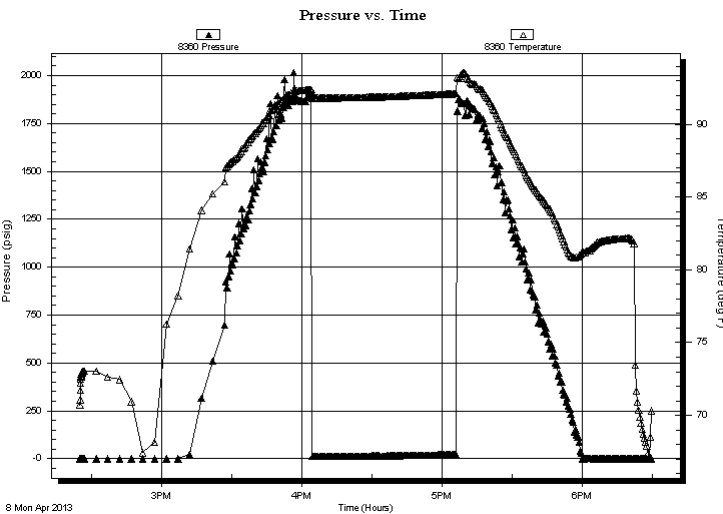
Test Start: 2013.04.08 @ 14:25:00

### GENERAL INFORMATION:

Formation: **LKC J**  
 Deviated: No Whipstock: ft (KB)  
 Time Tool Opened: 16:04:00  
 Time Test Ended: 18:29:30  
**Interval: 3772.00 ft (KB) To 3805.00 ft (KB) (TVD)**  
 Total Depth: 3805.00 ft (KB) (TVD)  
 Hole Diameter: 7.88 inches Hole Condition: Fair  
 Test Type: Conventional Bottom Hole (Reset)  
 Tester: Wilbur Steinbeck  
 Unit No: 44  
 Reference Elevations: 2398.00 ft (KB)  
 2390.00 ft (CF)  
 KB to GR/CF: 8.00 ft

**Serial #: 8360** Inside  
 Press @ Run Depth: psig @ 3773.00 ft (KB) Capacity: 8000.00 psig  
 Start Date: 2013.04.08 End Date: 2013.04.08 Last Calib.: 2013.04.08  
 Start Time: 14:25:05 End Time: 18:29:30 Time On Btm:  
 Time Off Btm:

**TEST COMMENT:** 30 IF; Surface Blow died in 20 min  
 30 IS; No Blow



### PRESSURE SUMMARY

| Time (Min.) | Pressure (psig) | Temp (deg F) | Annotation |
|-------------|-----------------|--------------|------------|
|             |                 |              |            |
|             |                 |              |            |
|             |                 |              |            |
|             |                 |              |            |

### Recovery

| Length (ft) | Description | Volume (bbl) |
|-------------|-------------|--------------|
| 1.00        | Mud         | 0.00         |
|             |             |              |
|             |             |              |
|             |             |              |
|             |             |              |

### Gas Rates

| Choke (inches) | Pressure (psig) | Gas Rate (Mcf/d) |
|----------------|-----------------|------------------|
|                |                 |                  |

\* Recovery from multiple tests



**TRILOBITE  
TESTING, INC.**

# DRILL STEM TEST REPORT

**TOOL DIAGRAM**

Baird Oil Co. LLC

**Weiser-Field Unit #1-23**

PO Box 428  
Logan KS 67646

**23-3s-22w Norton,KS**

Job Ticket: 50647

**DST#: 3**

ATTN: Richard Bell

Test Start: 2013.04.08 @ 14:25:00

## Tool Information

|                           |                    |                       |                                |                                    |
|---------------------------|--------------------|-----------------------|--------------------------------|------------------------------------|
| Drill Pipe:               | Length: 3664.00 ft | Diameter: 3.80 inches | Volume: 51.40 bbl              | Tool Weight: 2000.00 lb            |
| Heavy Wt. Pipe:           | Length: 0.00 ft    | Diameter: 0.00 inches | Volume: 0.00 bbl               | Weight set on Packer: 25000.00 lb  |
| Drill Collar:             | Length: 120.00 ft  | Diameter: 2.25 inches | Volume: 0.59 bbl               | Weight to Pull Loose: 55000.00 lb  |
|                           |                    |                       | <u>Total Volume: 51.99 bbl</u> | Tool Chased 2.00 ft                |
| Drill Pipe Above KB:      | 31.00 ft           |                       |                                | String Weight: Initial 48000.00 lb |
| Depth to Top Packer:      | 3772.00 ft         |                       |                                | Final 48000.00 lb                  |
| Depth to Bottom Packer:   | ft                 |                       |                                |                                    |
| Interval between Packers: | 33.00 ft           |                       |                                |                                    |
| Tool Length:              | 52.00 ft           |                       |                                |                                    |
| Number of Packers:        | 2                  | Diameter: 6.75 inches |                                |                                    |

Tool Comments:

## Tool Description

| Tool Description          | Length (ft)  | Serial No. | Position | Depth (ft) | Accum. Lengths                |
|---------------------------|--------------|------------|----------|------------|-------------------------------|
| Shut In Tool              | 5.00         |            |          | 3758.00    |                               |
| Hydraulic tool            | 5.00         |            |          | 3763.00    |                               |
| Packer                    | 5.00         |            |          | 3768.00    | 19.00 Bottom Of Top Packer    |
| Packer                    | 4.00         |            |          | 3772.00    |                               |
| Stubb                     | 1.00         |            |          | 3773.00    |                               |
| Recorder                  | 0.00         | 8360       | Inside   | 3773.00    |                               |
| Recorder                  | 0.00         | 8353       | Outside  | 3773.00    |                               |
| Perforations              | 29.00        |            |          | 3802.00    |                               |
| Bullnose                  | 3.00         |            |          | 3805.00    | 33.00 Bottom Packers & Anchor |
| <b>Total Tool Length:</b> | <b>52.00</b> |            |          |            |                               |



**TRILOBITE  
TESTING, INC.**

# DRILL STEM TEST REPORT

**FLUID SUMMARY**

Baird Oil Co. LLC

**Weiser-Field Unit #1-23**

PO Box 428  
Logan KS 67646

**23-3s-22w Norton,KS**

Job Ticket: 50647

**DST#: 3**

ATTN: Richard Bell

Test Start: 2013.04.08 @ 14:25:00

## Mud and Cushion Information

Mud Type: Gel Chem

Cushion Type:

Oil API:

deg API

Mud Weight: 9.00 lb/gal

Cushion Length:

ft

Water Salinity:

ppm

Viscosity: 55.00 sec/qt

Cushion Volume:

bbbl

Water Loss: 6.59 in<sup>3</sup>

Gas Cushion Type:

Resistivity: ohm.m

Gas Cushion Pressure:

psig

Salinity: 1500.00 ppm

Filter Cake: inches

## Recovery Information

Recovery Table

| Length<br>ft | Description | Volume<br>bbl |
|--------------|-------------|---------------|
| 1.00         | Mud         | 0.005         |

Total Length: 1.00 ft      Total Volume: 0.005 bbl

Num Fluid Samples: 0

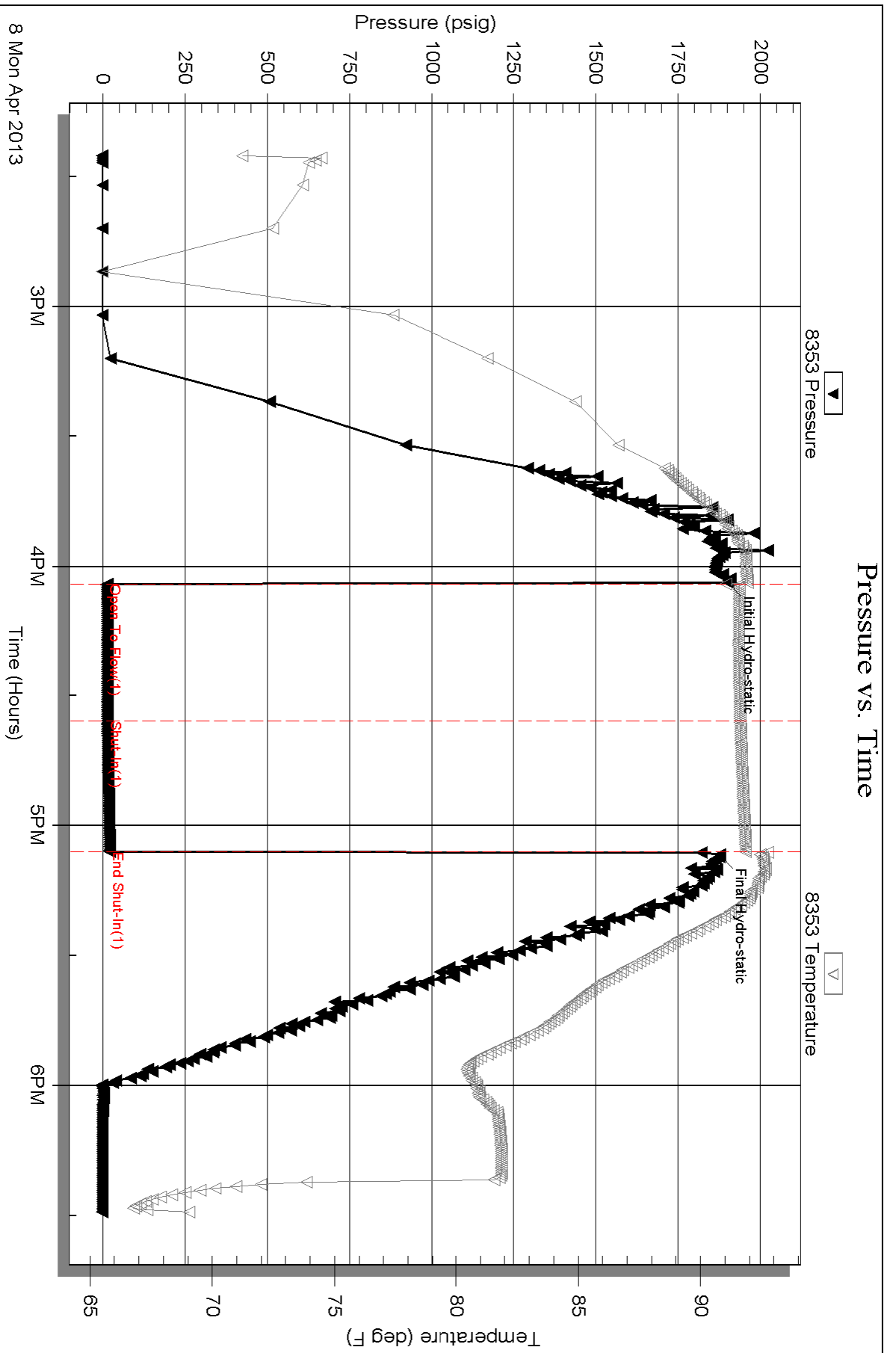
Num Gas Bombs: 0

Serial #:

Laboratory Name:

Laboratory Location:

Recovery Comments:



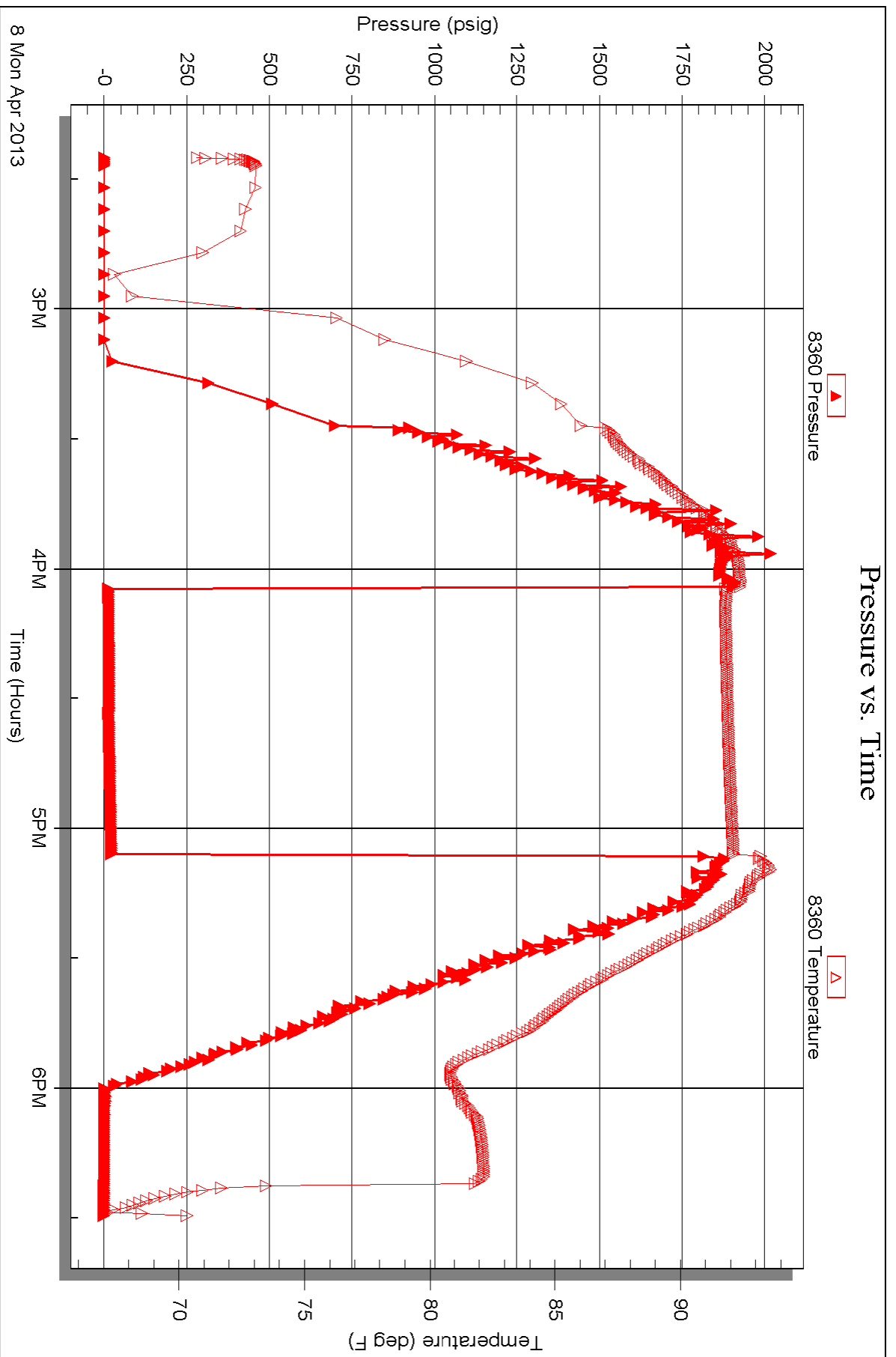
Serial #: 8360

Inside

Baird Oil Co. LLC

23-35-22w Norton KS

DST Test Number: 3





# TRILOBITE TESTING INC.

1515 Commerce Parkway • Hays, Kansas 67601

## Test Ticket

NO. 50645

Well Name & No. Weiser - Field Unit 1-23 Test No. 1 Date 4-7-13  
 Company Baird oil Co LLC Elevation ~~22308~~ 2390 KB 2390 GL  
 Address 113 W Main PO Box 428 Logan KS 67646  
 Co. Rep / Geo. Rich Bell Rig WW 12  
 Location: Sec. 23 Twp. 3s Rge. 22w Co. Norton State KS

Interval Tested 3640 3656 Zone Tested LKC A  
 Anchor Length 16 Drill Pipe Run 3,509 Mud Wt. 9.1  
 Top Packer Depth 3635 Drill Collars Run 120 Vis 60  
 Bottom Packer Depth 3640 Wt. Pipe Run 0 WL 5.6  
 Total Depth 3656 Chlorides 900 ppm System LCM 1 1/2

Blow Description 1F; Built to 14  
1st; No blow  
1F; Built to 14  
1st; No blow

| Rec       | Feet of      | %gas       | %oil      | %water    | %mud |
|-----------|--------------|------------|-----------|-----------|------|
| <u>2</u>  | <u>oil</u>   | <u>100</u> |           |           |      |
| <u>63</u> | <u>OSMCW</u> | <u>10</u>  | <u>60</u> | <u>30</u> |      |
| Rec       | Feet of      | %gas       | %oil      | %water    | %mud |
| Rec       | Feet of      | %gas       | %oil      | %water    | %mud |

Rec Total 65 BHT 94° Gravity \_\_\_\_\_ API RW \_\_\_\_\_ @ \_\_\_\_\_ °F Chlorides \_\_\_\_\_ ppm

(A) Initial Hydrostatic 1,802  Test 1150 T-On Location 4:25  
 (B) First Initial Flow 15  Jars \_\_\_\_\_ T-Started 4:50  
 (C) First Final Flow 27  Safety Joint \_\_\_\_\_ T-Open 7:06  
 (D) Initial Shut-In 1,210  Circ Sub NA T-Pulled 9:06  
 (E) Second Initial Flow 31  Hourly Standby \_\_\_\_\_ T-Out 10:25  
 (F) Second Final Flow 42  Mileage 100 RT 155  
 (G) Final Shut-In 1,176  Sampler \_\_\_\_\_  
 (H) Final Hydrostatic 1,773  Straddle \_\_\_\_\_

Ruined Shale Packer \_\_\_\_\_  
 Ruined Packer \_\_\_\_\_  
 Extra Copies \_\_\_\_\_  
 Initial Open 30  Extra Packer \_\_\_\_\_  
 Initial Shut-In 30  Extra Recorder \_\_\_\_\_  
 Final Flow 30  Day Standby \_\_\_\_\_  
 Final Shut-In 30  Accessibility \_\_\_\_\_  
 Sub Total 1305

Approved By \_\_\_\_\_ Our Representative [Signature]

Trilobite Testing Inc. shall not be liable for damaged of any kind of the property or personnel of the one for whom a test is made, or for any loss suffered or sustained, directly or indirectly, through the use of its equipment, or its statements or opinion concerning the results of any test, tools lost or damaged in the hole shall be paid for at cost by the party for whom the test is made.



# TRILOBITE TESTING INC.

1515 Commerce Parkway • Hays, Kansas 67601

## Test Ticket

NO. 50646

Well Name & No. Weiser-Field Unit 1-23 Test No. 2 Date 4-7-13  
 Company Baird Oil Co LLC Elevation 2398 KB 2390 GL  
 Address PO Box 428 Logan Ks 67646  
 Co. Rep / Geo. Rich Bell Rig WW 12  
 Location: Sec. 23 Twp. 3s Rge. 22w Co. Norton State Ks

Interval Tested 3686 3704 Zone Tested LKC 'D'  
 Anchor Length 18 Drill Pipe Run 3569 Mud Wt. 9.1  
 Top Packer Depth 3681 Drill Collars Run 120 Vis 60  
 Bottom Packer Depth 3686 Wt. Pipe Run 0 WL 5.6  
 Total Depth 3704 Chlorides 900 ppm System LCM 1 1/2

Blow Description 1F; Built to 6"  
1S1; No blow  
FF; Built to 3 1/4"  
F51; No blow

| Rec        | Feet of   | %gas | %oil      | %water    | %mud |
|------------|-----------|------|-----------|-----------|------|
| <u>180</u> | <u>MW</u> |      | <u>85</u> | <u>15</u> |      |
| Rec        | Feet of   | %gas | %oil      | %water    | %mud |
| Rec        | Feet of   | %gas | %oil      | %water    | %mud |
| Rec        | Feet of   | %gas | %oil      | %water    | %mud |

Rec Total 180 BHT 93° Gravity \_\_\_\_\_ API RW \_\_\_\_\_ @ \_\_\_\_\_ °F Chlorides \_\_\_\_\_ ppm

(A) Initial Hydrostatic 1837  Test 1150 T-On Location 5:15 pm  
 (B) First Initial Flow 13  Jars \_\_\_\_\_ T-Started 6:00 pm  
 (C) First Final Flow 73  Safety Joint \_\_\_\_\_ T-Open 7:27 pm  
 (D) Initial Shut-In 1299  Circ Sub NA T-Pulled 10:27 pm  
 (E) Second Initial Flow 75  Hourly Standby \_\_\_\_\_ T-Out 00:15  
 (F) Second Final Flow 98  Mileage 100 RT 155 Comments \_\_\_\_\_  
 (G) Final Shut-In 1286  Sampler \_\_\_\_\_  
 (H) Final Hydrostatic 1285  Straddle \_\_\_\_\_  Ruined Shale Packer \_\_\_\_\_

Initial Open 45  Shale Packer \_\_\_\_\_  Ruined Packer \_\_\_\_\_  
 Initial Shut-In 45  Extra Packer \_\_\_\_\_  Extra Copies \_\_\_\_\_  
 Final Flow 45  Extra Recorder \_\_\_\_\_ Sub Total 0  
 Final Shut-In 45  Day Standby \_\_\_\_\_ Total 1305  
 Accessibility \_\_\_\_\_ MP/DST Disc't \_\_\_\_\_  
 Sub Total 1305

Approved By \_\_\_\_\_ Our Representative [Signature]

TriLOBITE TESTING INC. shall not be liable for damaged of any kind of the property or personnel of the one for whom a test is made, or for any loss suffered or sustained, directly or indirectly, through the use of its equipment, or its statements or opinion concerning the results of any test, tools lost or damaged in the hole shall be paid for at cost by the party for whom the test is made.



# TRILOBITE TESTING INC.

1515 Commerce Parkway • Hays, Kansas 67601

## Test Ticket

NO. 50647

Well Name & No. Weiser - Field Unit 1-23 Test No. 3 Date 4-8-13  
 Company Baird Oil Co. LLC Elevation 2398 KB 2390 GL  
 Address PO Box 428 Logan KS 67646  
 Co. Rep / Geo. Rich Bell Rig LKW 12  
 Location: Sec. 23 Twp. 3s Rge. 22W Co. Norton State KS

Interval Tested 3772 3805 Zone Tested LRC 'J'  
 Anchor Length 33 Drill Pipe Run 3664 Mud Wt. 9.3  
 Top Packer Depth 3767 Drill Collars Run 120 Vis 5.5  
 Bottom Packer Depth 3772 Wt. Pipe Run 0 WL 6.6  
 Total Depth 3805 Chlorides 1500 ppm System LCM 1  
 Blow Description 1F: Surface blow Died in 20 min.  
151: No blow  
FP: =  
FSI: =

| Rec      | Feet of    | %gas | %oil | %water | %mud |
|----------|------------|------|------|--------|------|
| <u>1</u> | <u>Med</u> |      |      |        |      |
| Rec      | Feet of    | %gas | %oil | %water | %mud |
| Rec      | Feet of    | %gas | %oil | %water | %mud |
| Rec      | Feet of    | %gas | %oil | %water | %mud |
| Rec      | Feet of    | %gas | %oil | %water | %mud |

Rec Total 1 BHT 920 Gravity \_\_\_\_\_ API RW \_\_\_\_\_ @ \_\_\_\_\_ °F Chlorides \_\_\_\_\_ ppm

(A) Initial Hydrostatic 1901  Test 1150 T-On Location 13:35  
 (B) First Initial Flow 13  Jars \_\_\_\_\_ T-Started 14:25  
 (C) First Final Flow 14  Safety Joint \_\_\_\_\_ T-Open ~~14:55~~ 16:05  
 (D) Initial Shut-In 21  Circ Sub NA T-Pulled ~~17:30~~ 17:05  
 (E) Second Initial Flow ~~1876~~  Hourly Standby \_\_\_\_\_ T-Out 18:30  
 (F) Second Final Flow \_\_\_\_\_  Mileage 100 RT x 2 <sup>310</sup> Comments Loaded tools  
 (G) Final Shut-In \_\_\_\_\_  Sampler \_\_\_\_\_ 9:40 AM on 4-9-13  
 (H) Final Hydrostatic 1876  Straddle \_\_\_\_\_  Ruined Shale Packer \_\_\_\_\_  
 Shale Packer \_\_\_\_\_  Ruined Packer \_\_\_\_\_  
 Extra Packer \_\_\_\_\_  Extra Copies \_\_\_\_\_  
 Initial Open 30  Extra Recorder \_\_\_\_\_ Sub Total 0  
 Initial Shut-In 30  Day Standby \_\_\_\_\_ Total 1460  
 Final Flow -  Accessibility \_\_\_\_\_ MP/DST Disc't \_\_\_\_\_  
 Final Shut-In - Sub Total 1460

Approved By \_\_\_\_\_ Our Representative [Signature]  
 Trilobite Testing Inc. shall not be liable for damaged or any kind of the property or personnel of the one for whom a test is made, or for any loss suffered or sustained, directly or indirectly, through its equipment, or its statements or opinion concerning the results of any test, tools lost or damaged in the hole shall be paid for at cost by the party for whom the test is made.