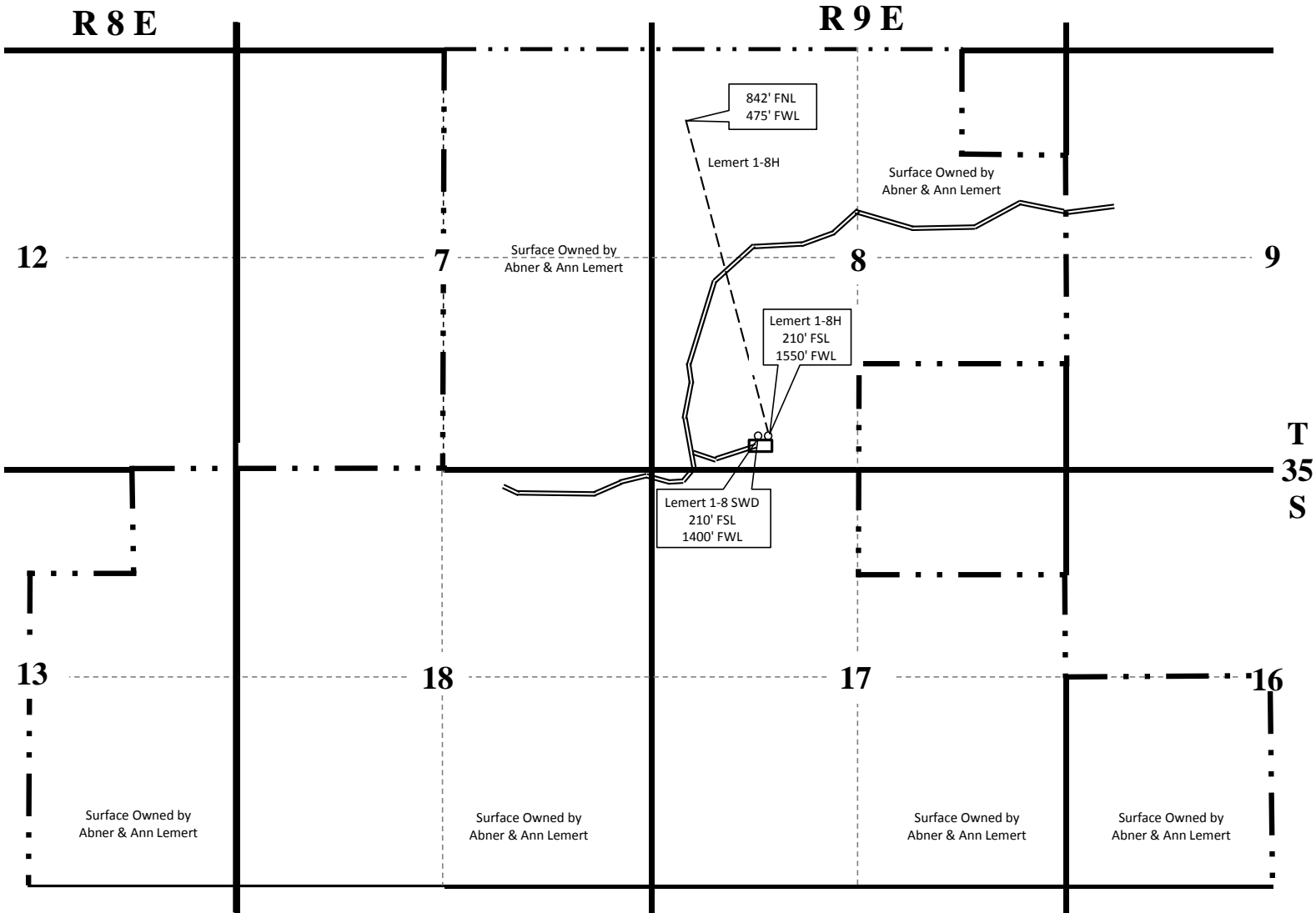


Lemert 1-8H
SW SW SE SW Sec 8-35S-9E
Chatauqua County, Kansas



- Lease Boundary
- Tank Battery
- Well Location
- ==== Lease Road

DESCRIPTION OF LEASED ACREAGE

Sec 13 -35S-8E Chatauqua Co. Kansas

- NE/4 NE/4
- S/2 NE/4
- N/2 SE/4
- Lots 1 & 2

Sec 7 -35S-9E Chatauqua Co. Kansas

E/2

Sec 8 -35S-9E Chatauqua Co. Kansas

- W/2
- NW/4 NE/4
- S/2 NE/4
- N/2 SE/4

Sec 16 -35S-9E Chatauqua Co. Kansas

- N/2 SW/4
- Lots 3 & 4

Sec 17 -35S-9E Chatauqua Co. Kansas

- NW/4 NE/4
- S/2 NE/4
- N/2 SW/4 & N/2 SE/4

Lots 1, 2, 3 & 4

Sec 18 -35S-9E Chatauqua Co. Kansas

All