



Scale: 5" / 100'
Measured Depth Log

Well Name Fesler 24-9-29 1H

Location S/2 S/2 SW SE, Section 29, T24S-R9W

State KS

County Reno

Country United States

Rig Number Duke 20

API Number 15-155-21644-01-00

Spud Date 3/4/2013

Ground Elevation 1,705

K.B. Elevation 1,717

Logged Interval 3,100 To 8,500

Formation Osage

Operator

Company Dorado E&P Partners, LLC

Address 1401 17th Street
Suite 1500
Denver, CO 80202

Geologist

Name Dave Wheeler

Company Dorado E&P Partners, LLC


1401 17th Street
Suite 1500
Denver, CO 80202

Other

Mudloggers

Chris Spencer - Unit Supervisor - 512-638-1324

Rock Types

| | | | |
|--|---|---|---|
|  UNKNOWN |  DOLOMITE |  SHALE GRAY |  TUFF |
|  ANHYDRITE |  CHERT |  SHALE COLORED |  BENTONITE |
|  GYPSUM |  COAL |  SILTSTONE |  IGNEOUS |
|  SALT |  MARLSTONE |  SANDSTONE |  METAMORPHIC |
|  SIDERITE or LIMONITE |  CLAYSTONE |  CONGLOMERATE | |
|  LIMESTONE |  SHALE |  BRECCIA | |

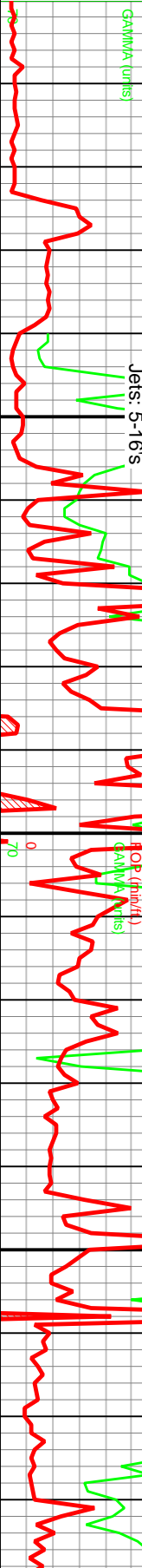
Accessories

- Fossils**
 - F FOSSIL
 - GASTROPOD
 - ALGAE
 - AMPHIRORA
 - BELEMNITE
 - BIOCLASTIC
 - BRACHIOPOD
 - BRYOZOA
 - CEPHALOPOD
 - CORAL
 - CRINOID
 - ECHINOID
 - FISH
 - FORAMINIFERA
- Minerals**
 - ANHYDRITIC
 - FERRUGINOUS
 - FERRUGINOUS PELLET
 - FELDSPAR
 - DOLOMITIC
 - COAL - THIN BEDS
 - CHITL
 - CHITDK
 - PLANT SPORES
 - SCAPHOPOD
 - STROMATOPOROID
 - ARGILLACEOUS
 - ARGILLITE GRAIN
 - GLAUCONITE
 - GYPSSIFEROUS
 - HEAVY MINERAL
 - KAOLIN
 - MARLSTONE
 - MINERAL CRYSTALS
 - NODULES
 - PHOSPHATE PELLET
 - PYRITE
 - SALT CAST
 - SANDY
 - SILICEOUS
 - SILTY
 - TUFFACEOUS
 - SILTSTONE STRINGER
- Stringer**
 - ANHYDRITE STRINGER
 - BENTONITE STRINGER
 - COAL STRINGER
 - DOLOMITE STRINGER
 - GYPSSUM STRINGER
 - LIMESTONE STRINGER
 - MARLSTONE (CALC) STRG
 - MARLSTONE (DOL) STRG
 - SANDSTONE STRINGER
 - SHALE STRINGER

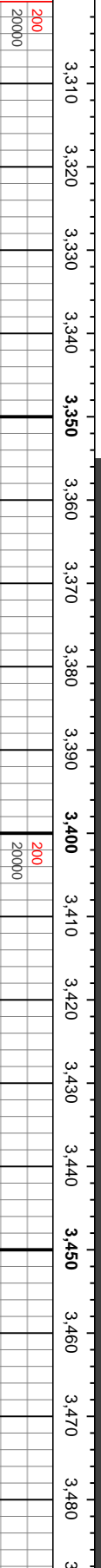
Other Symbols

- Oil Show**
 - MOLDIC
 - ORGANIC
 - PINPOINT
 - EVEN
 - QUESTIONABLE
 - SPOTTED STAINING
- Porosity**
 - EARTHY
 - FENESTRAL
 - FRACTURE
 - INTERCRYSTALLINE
 - INTERROILLITIC
 - FAULT
 - FORMATION TOP
 - GAS SHOW
 - MINDEPTH
 - MNDEPTH
 - NORMAL FAULT
 - OIL SHOW
 - OVERTURNED STRATA
 - REVERSE FAULT
 - SIDEWALL CORE (LEFT)
 - SIDEWALL CORE (RIGHT)
 - TRIP GAS
- Engineering**
 - BIT
 - CONNECTION (LEFT)
 - CONNECTION (RIGHT)
 - CONNECTION GAS
 - CORE - LOST
 - CORE - RECOVERED
 - DST INTERVAL
 - WIRELINE TESTED - LEFT
 - WIRELINE TESTED - RT
 - WIRELINE TESTED - RT
 - WIRELINE TESTED - RT
- Rounding**
 - ANGULAR
 - ROUNDED
 - SUBANG
 - SUBRND
 - LITHOGRAPHIC
 - MICROXLN
 - MUDSTONE
 - PACKSTONE
 - WACKSTONE
- Textures**
 - BOUNDSTONE
 - CHALKY
 - CRYPTOXLN
 - MODERATE
 - POOR
 - WELL
- Sorting**
 - MODERATE
 - POOR
 - WELL

ROP
 ROF
 GAMMA

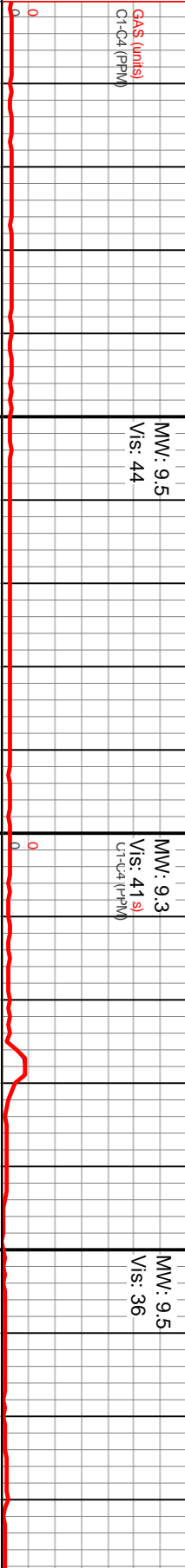


Slide/Rotate
 Depth Labels

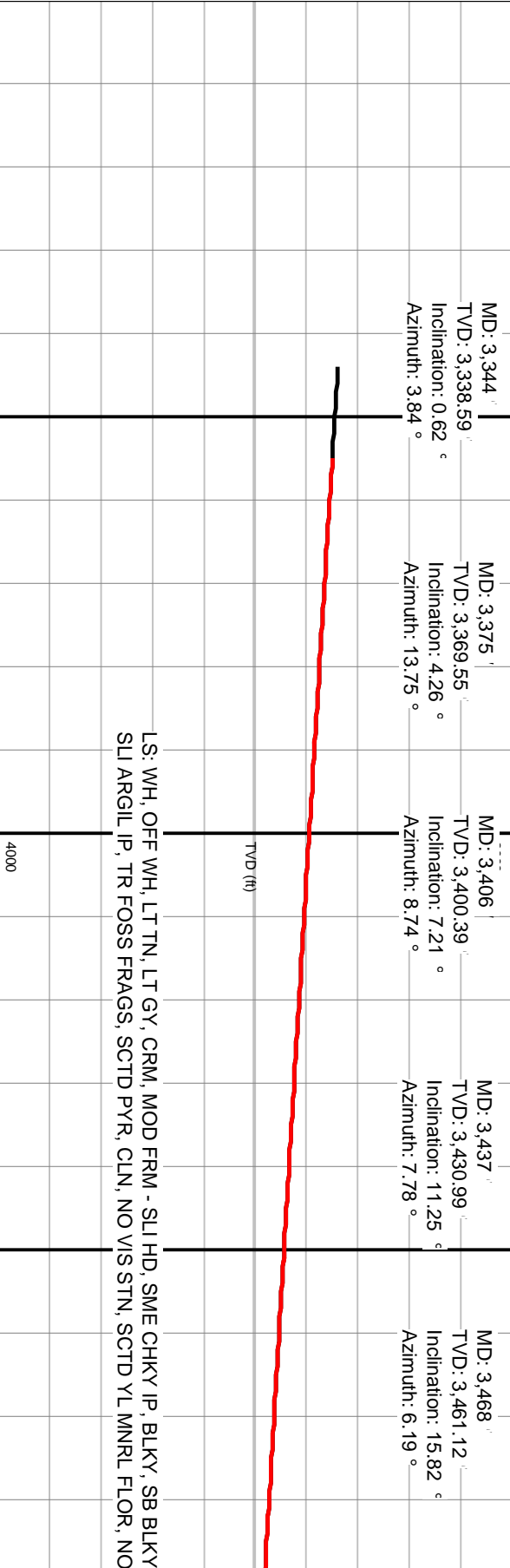


Total Gas & Chromatograph

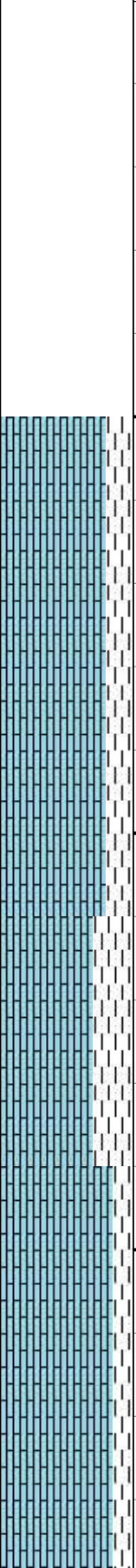
GAS
 C1
 C2
 C3
 C4



Well Bore
 TVD



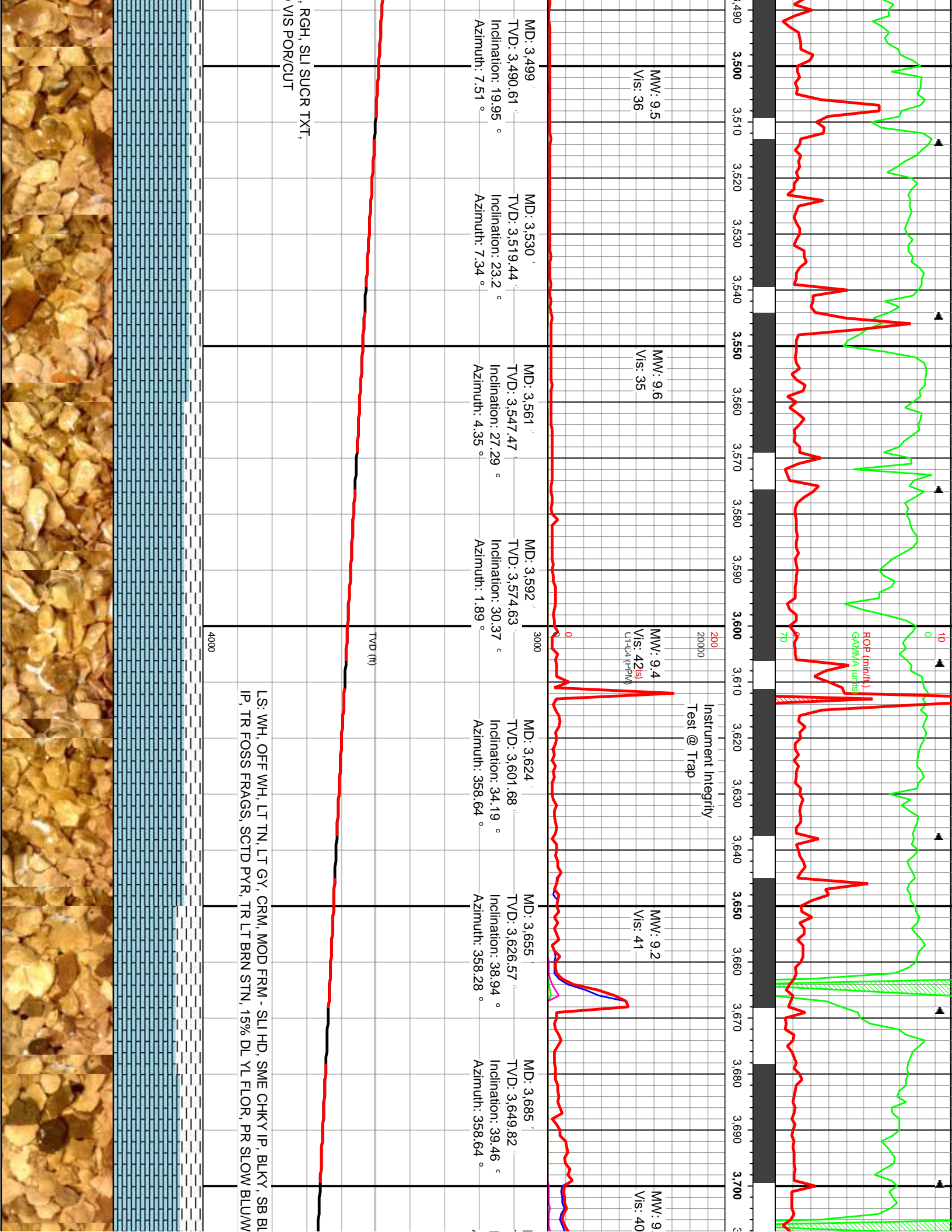
% Lith

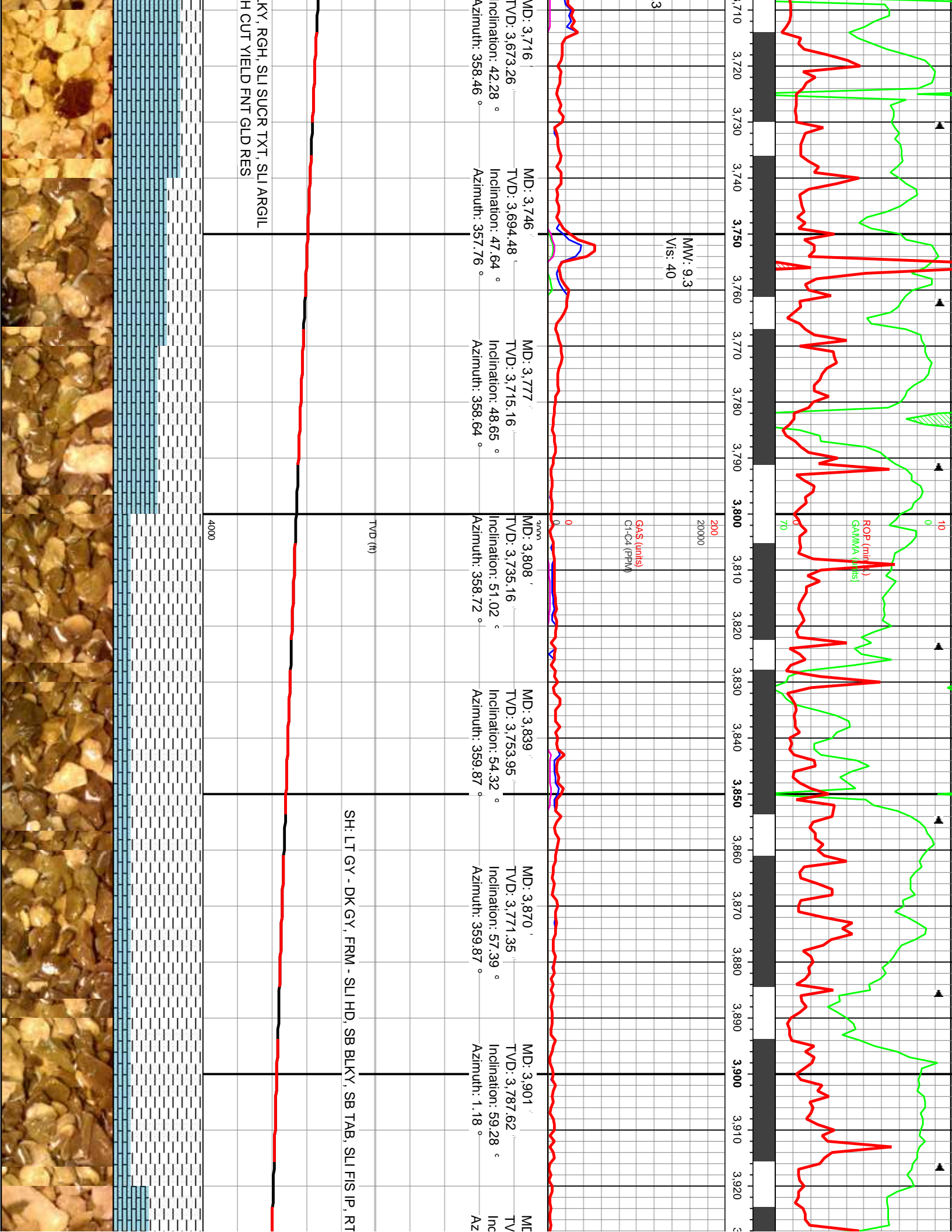


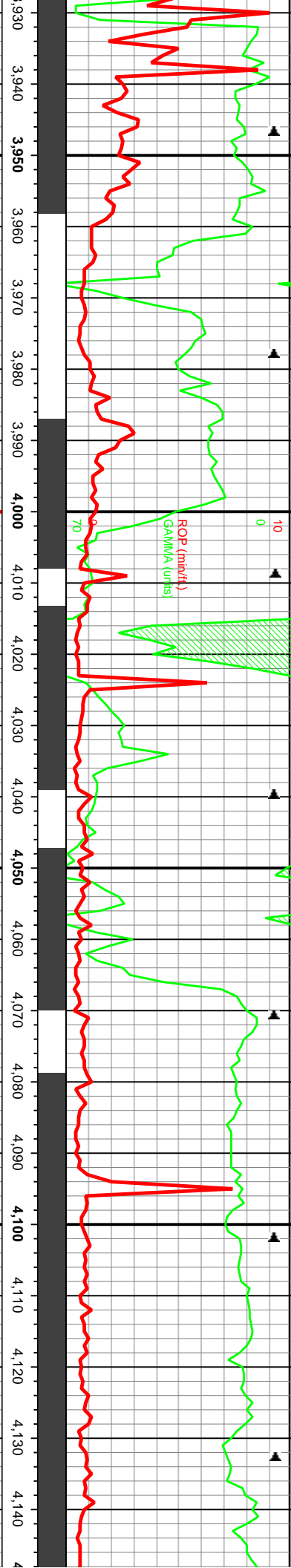
Images



LS: WH, OFF WH, LT TN, LT GY, CRM, MOD FRM - SLI HD, SME CHKY IP, BLKY, SB BLKY
 SLI ARGIL IP, TR FOSS FRAGS, SCTD PYR, CLN, NO VIS STN, SCTD YL MNRL FLOR, NO







| MD (ft) | TVD (ft) | Inclination (°) | Azimuth (°) |
|---------|----------|-----------------|-------------|
| 3,932 | 3,802.63 | 62.8 | 1.8 |
| 3,963 | 3,815.85 | 66.71 | 3.38 |
| 3,994 | 3,827.82 | 67.9 | 359.43 |
| 4,025 | 3,838.69 | 71.02 | 1.27 |
| 4,056 | 3,848.24 | 73.08 | 0.83 |
| 4,087 | 3,856.54 | 75.89 | 1.71 |
| 4,118 | 3,862.91 | 80.38 | 1.18 |

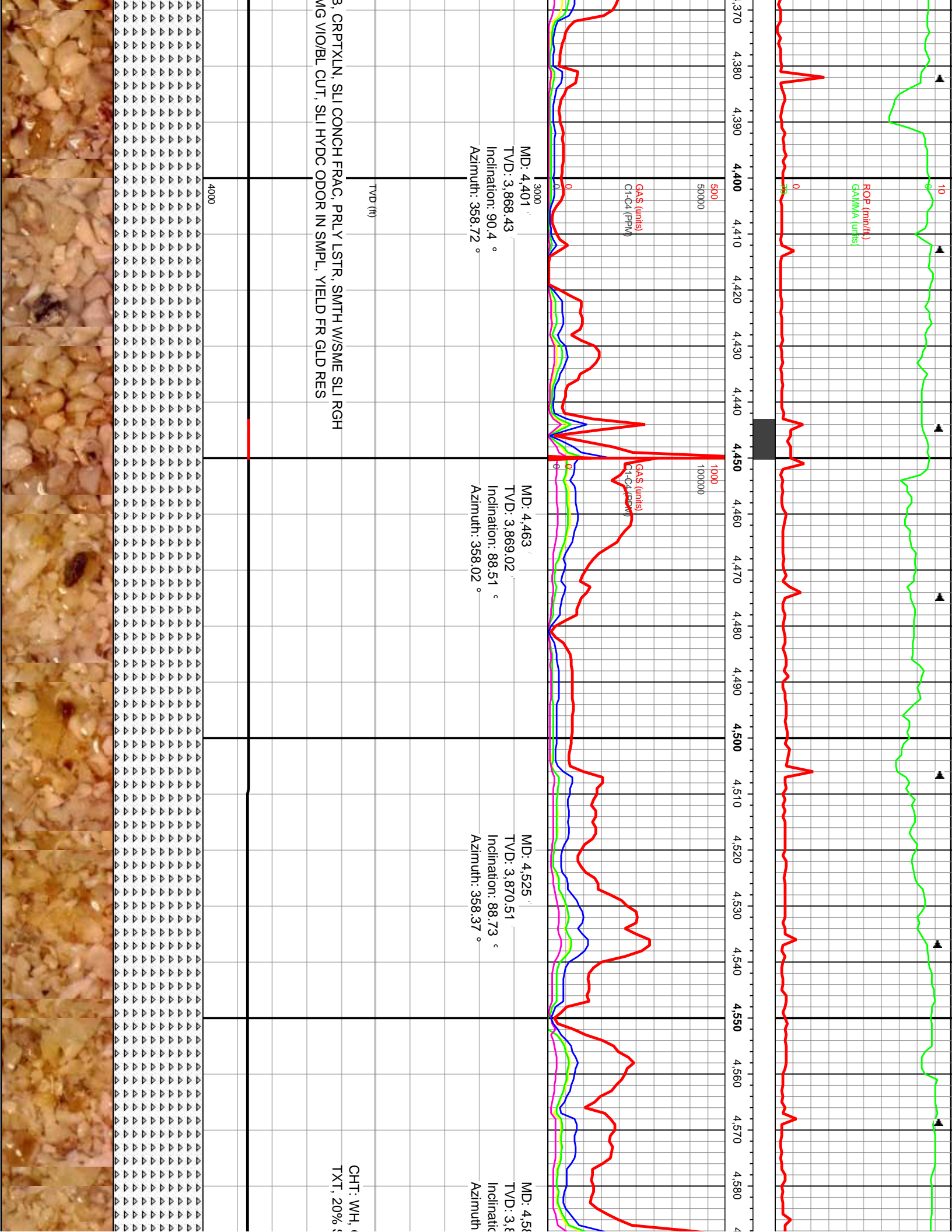
HY, DULL LSTR, SLI CALC IP

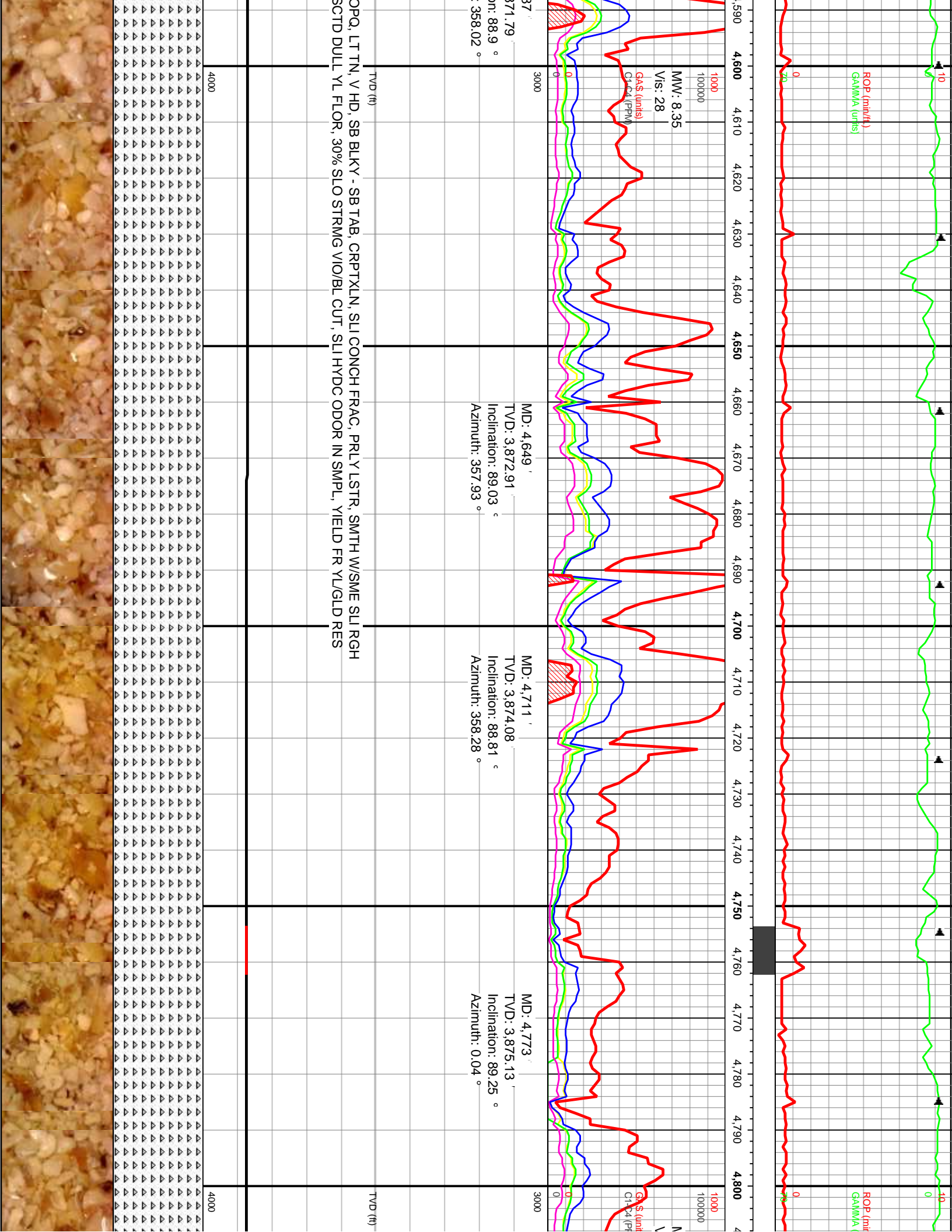
TVD (ft)

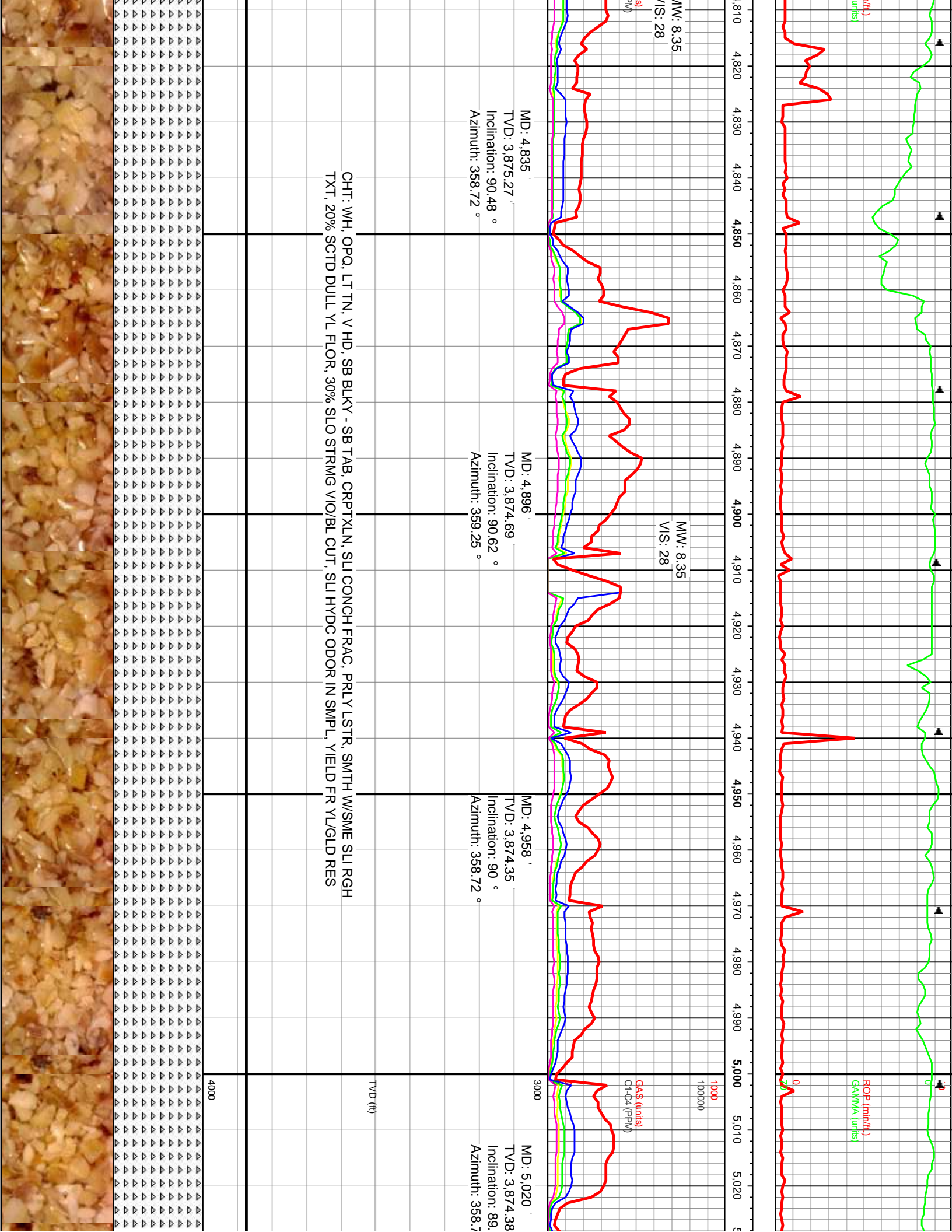
4000

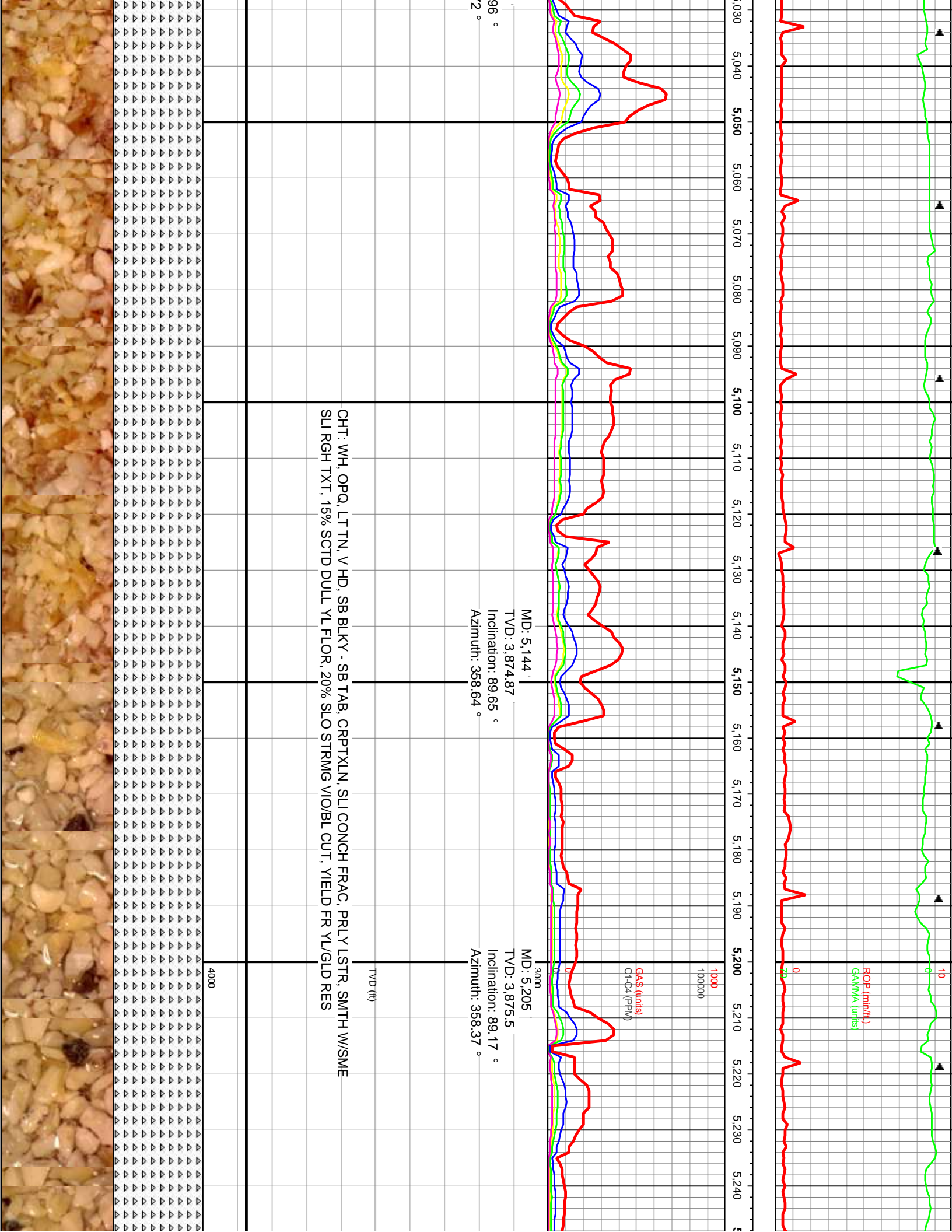
CHT: WH, OPQ, LT TN, V HD, SB BLKY - SB TAB, CRPTXLN, SLI CONCH FRAC
 TXT, 15% SCTD DULL YL FLOR, 20% SLO STRMG VIO/BL CUT, SLI HYDC ODC











ROP (in/hr)
GAMMA (units)

10
0
20

1000
100000

GAS (units)
C1-C4 (PPM)

3000

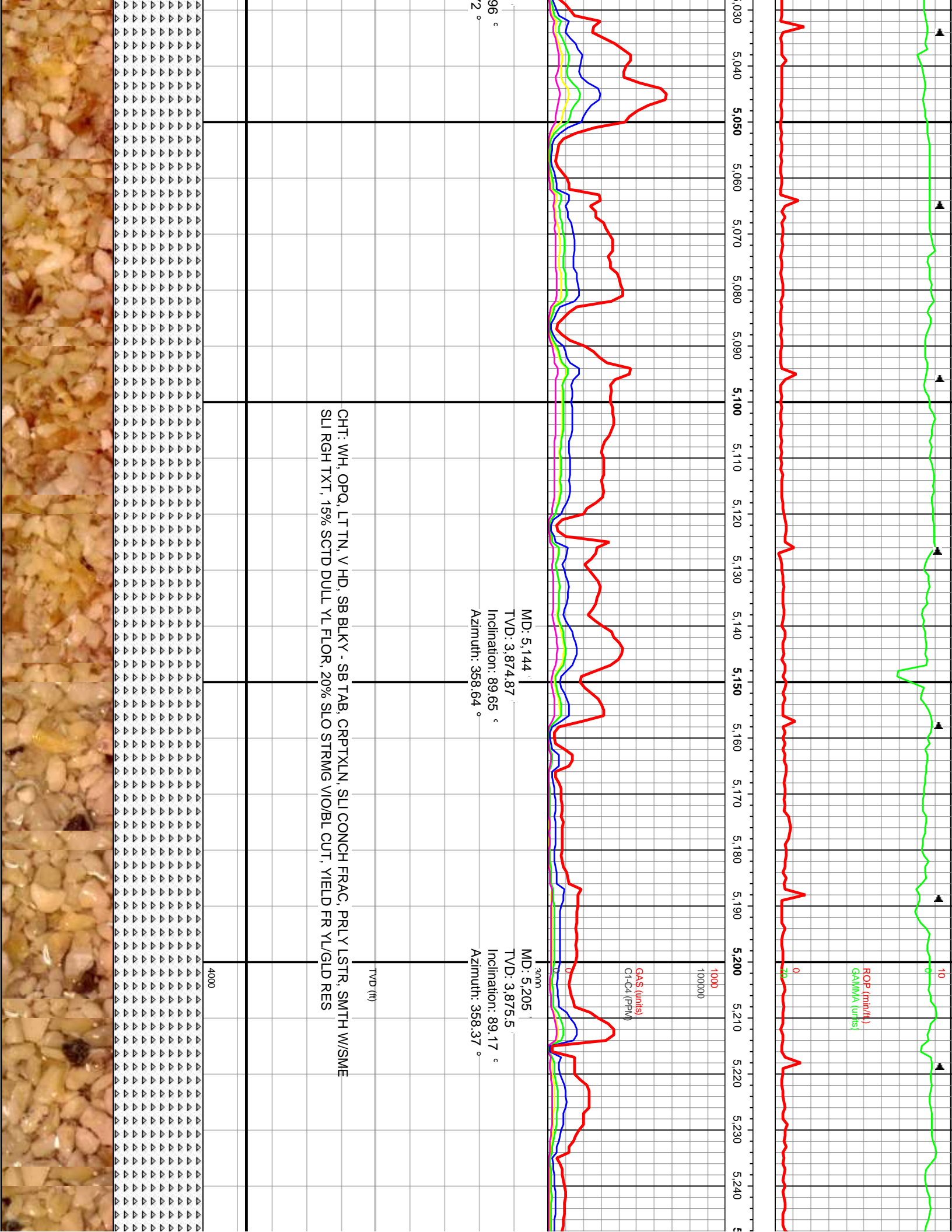
MD: 5,144
TVD: 3,874.87
Inclination: 89.65 °
Azimuth: 358.64 °

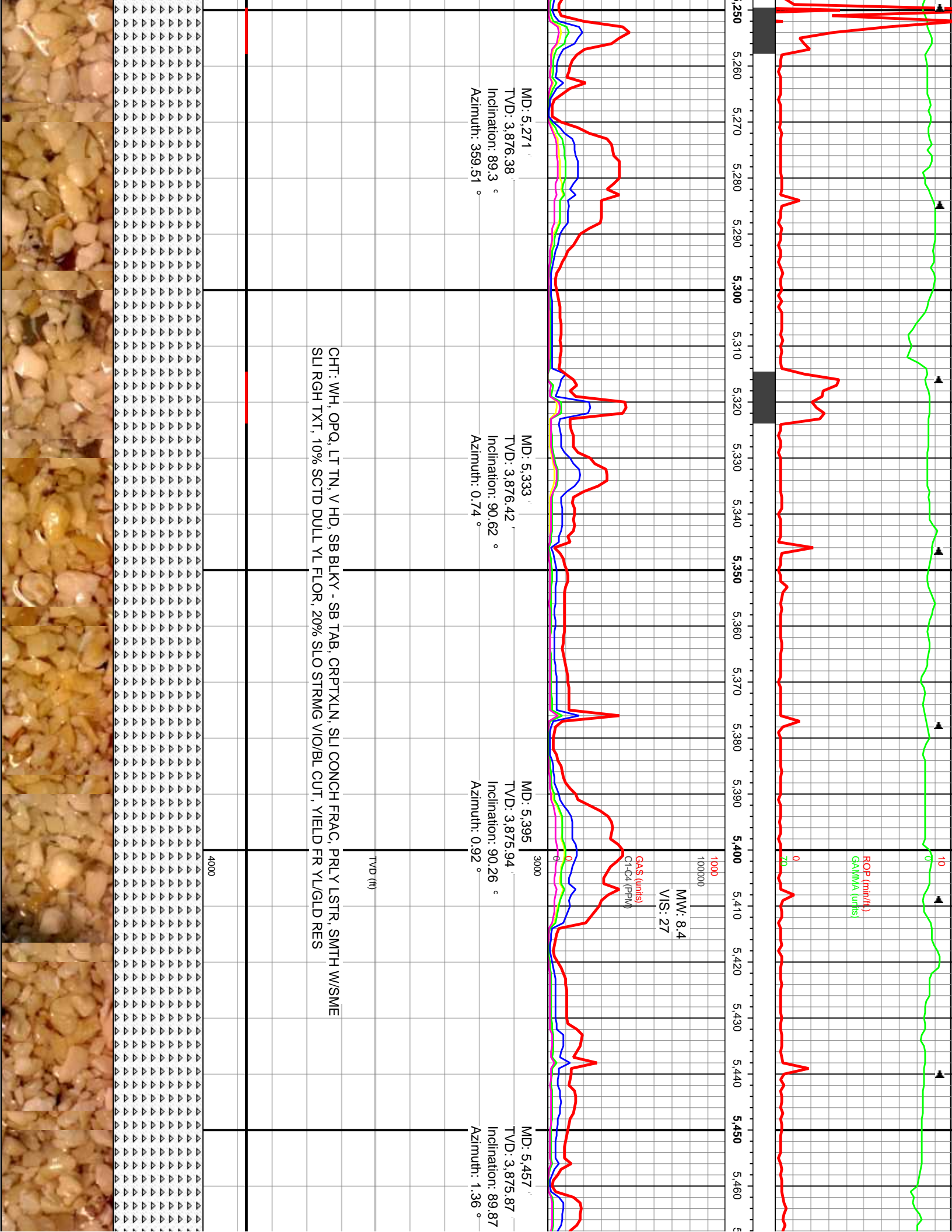
MD: 5,205
TVD: 3,875.5
Inclination: 89.17 °
Azimuth: 358.37 °

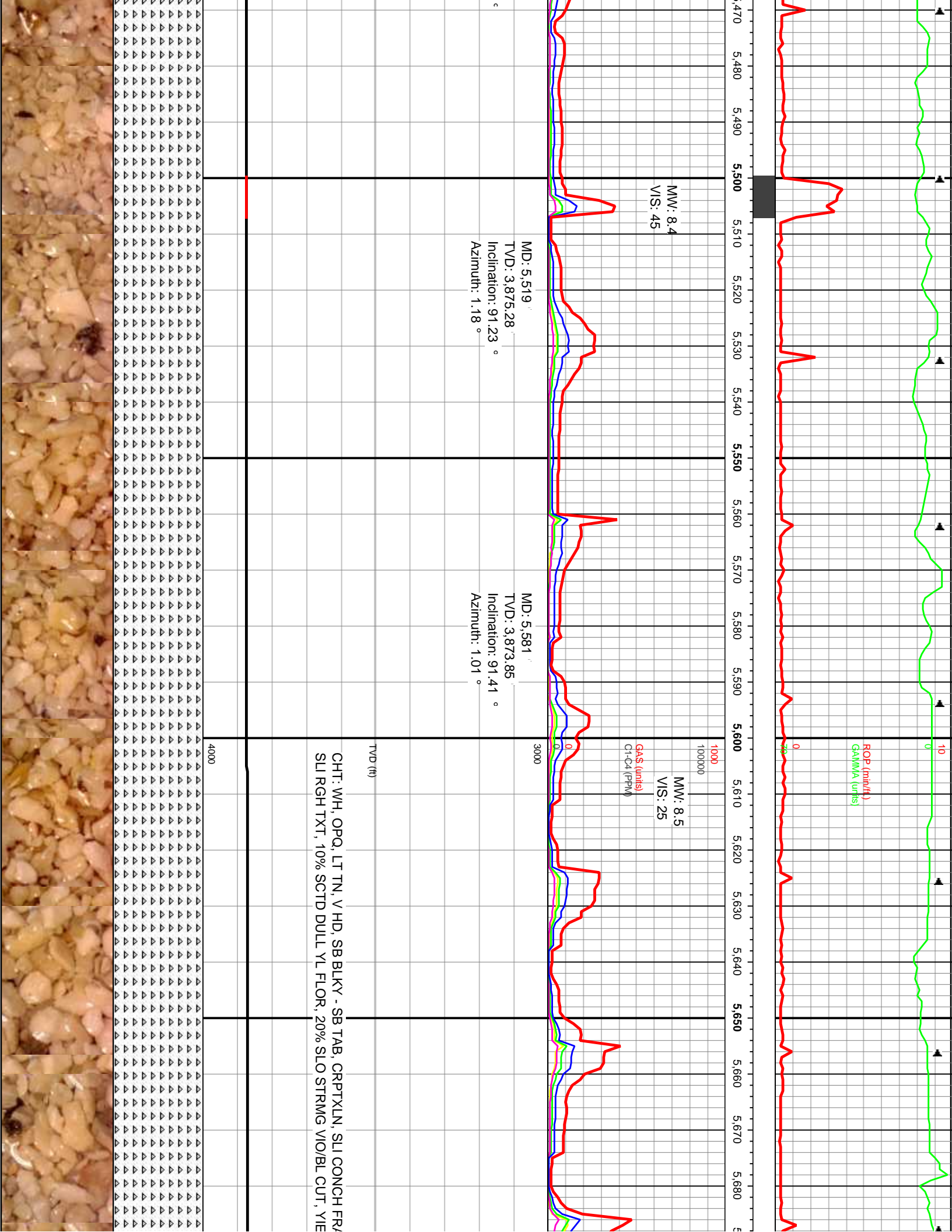
CHT: WH, OPQ, LT TN, V HD, SB BLKY - SB TAB, CRPTXLN, SLI CONCH FRAC, PRLY LSTR, SMTH W/SME
SLI RGH TXT, 15% SCTD DULL YL FLOR, 20% SLO STRMG VIO/BL CUT, YIELD FR YL/GLD RES

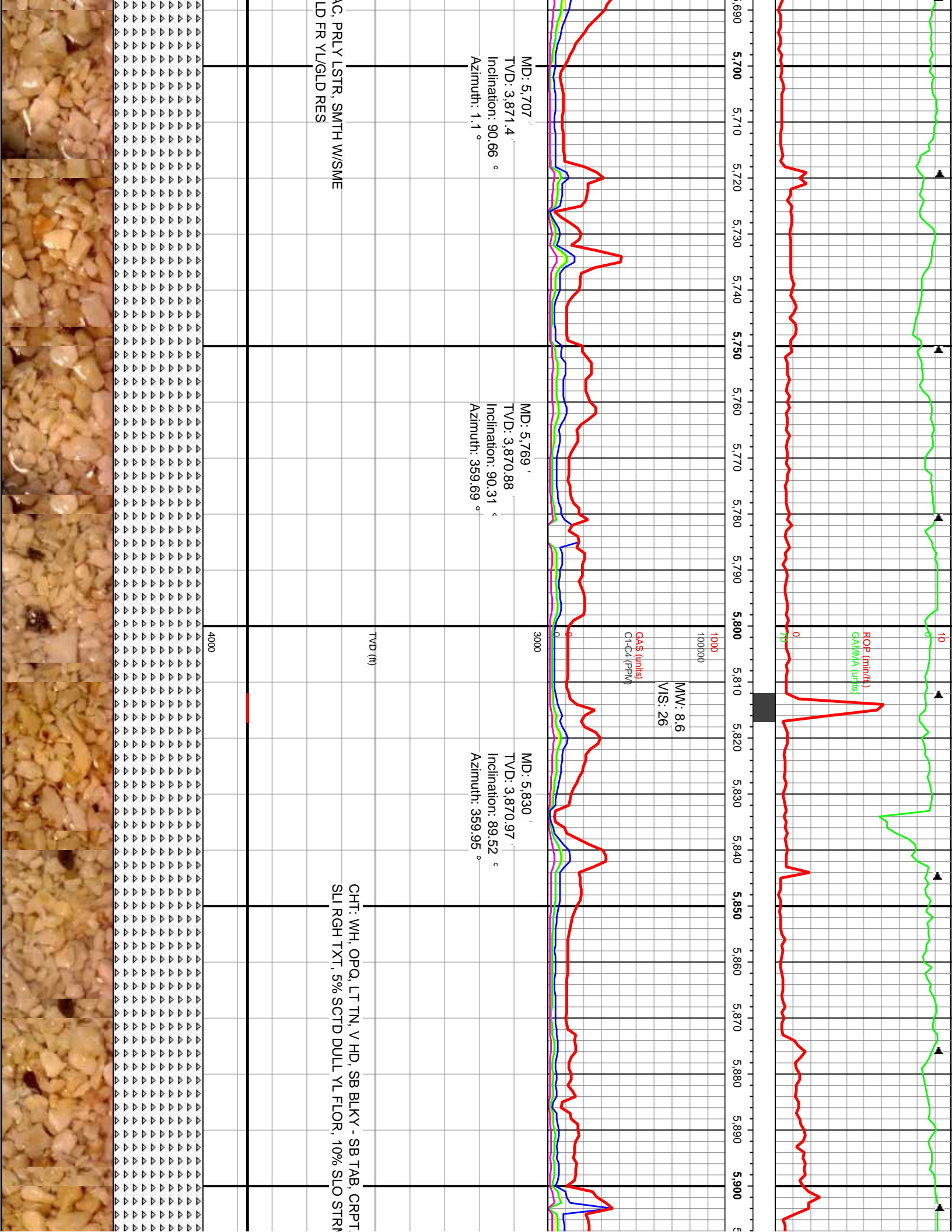
TVD (ft)

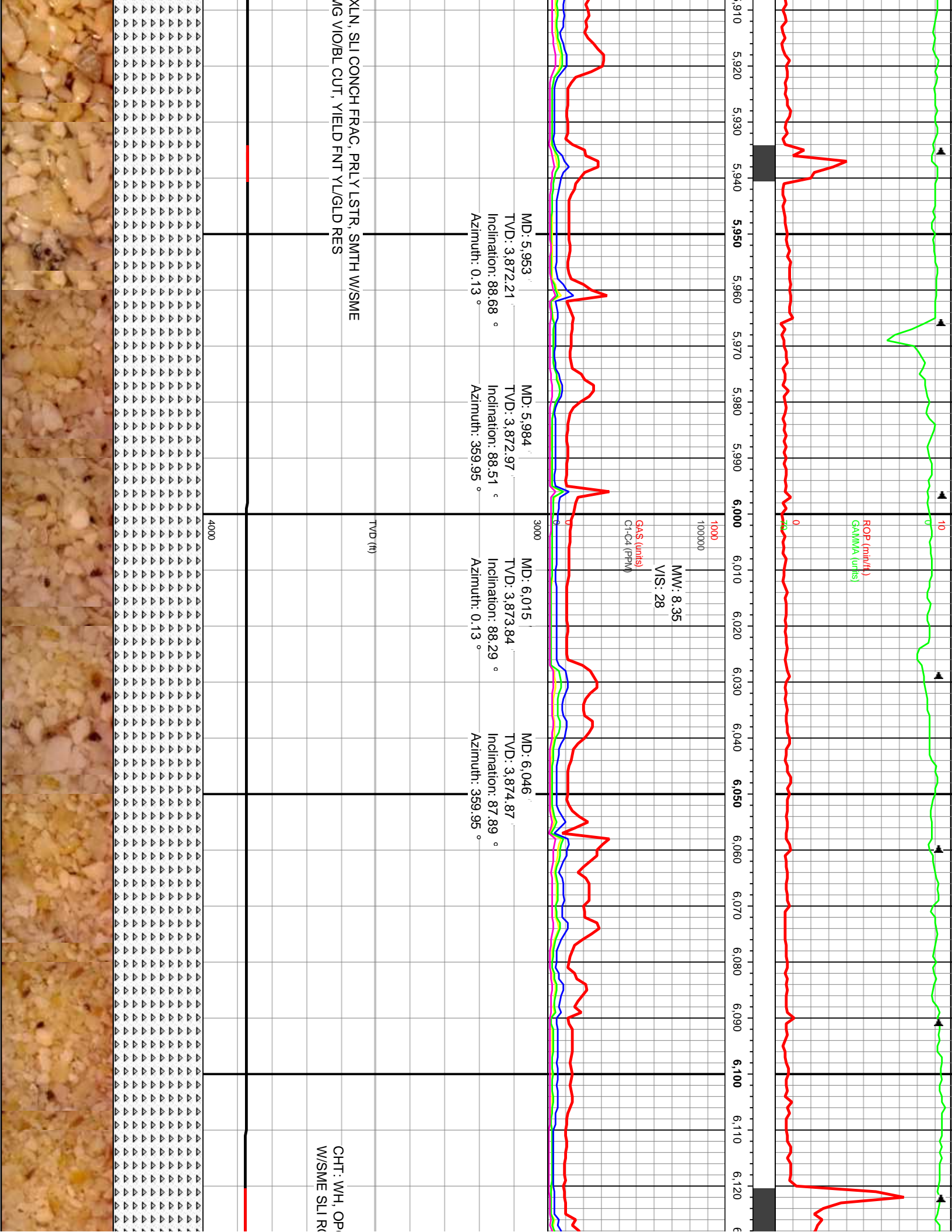
4000

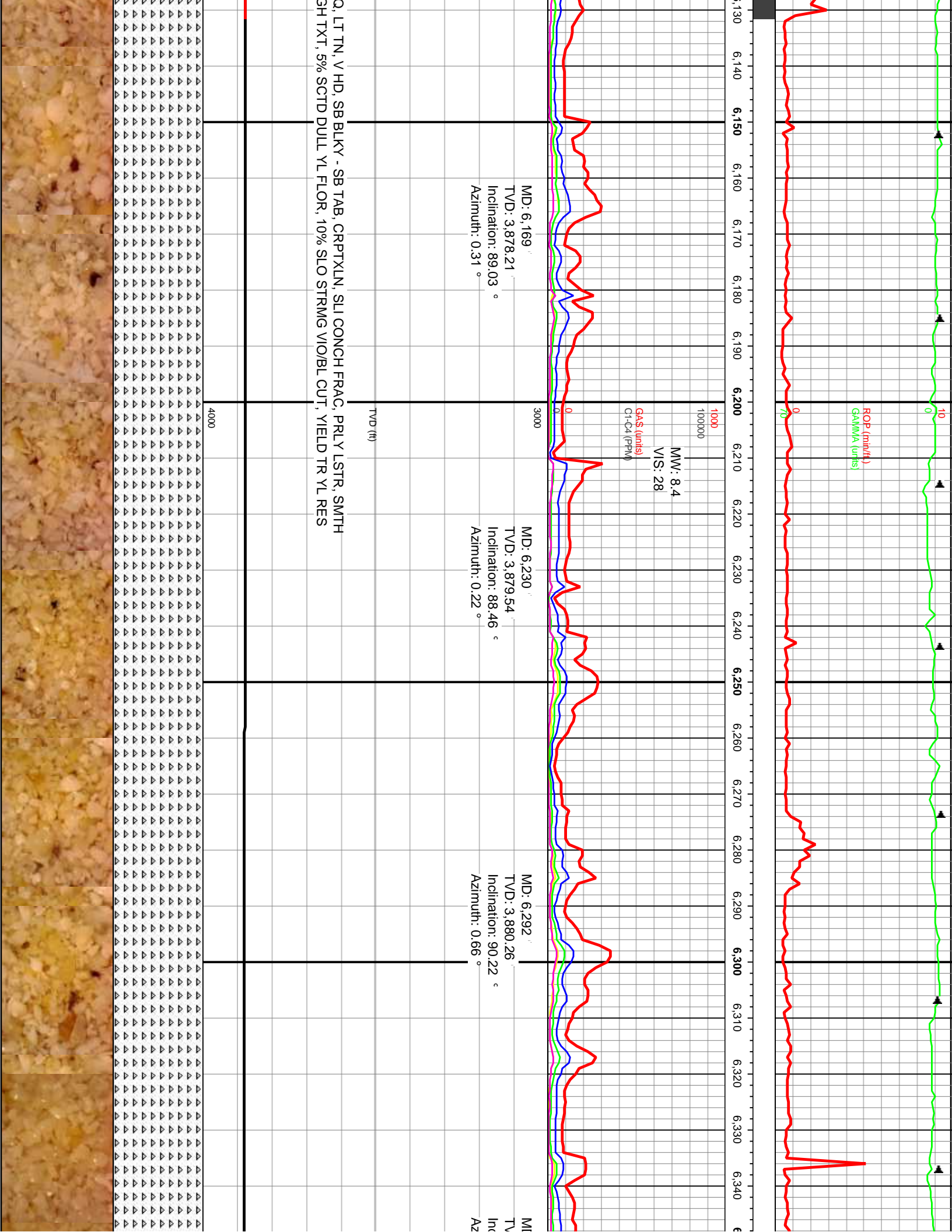


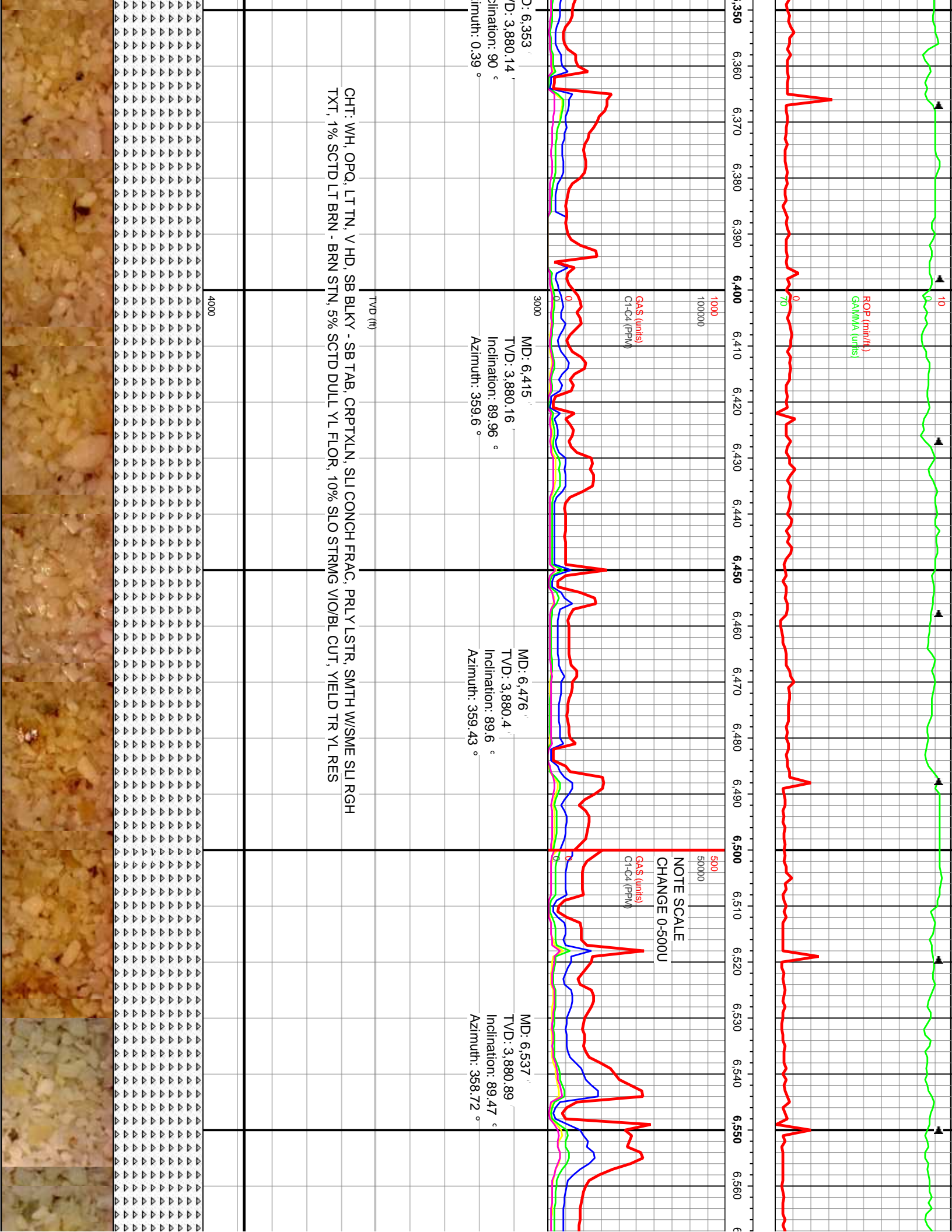


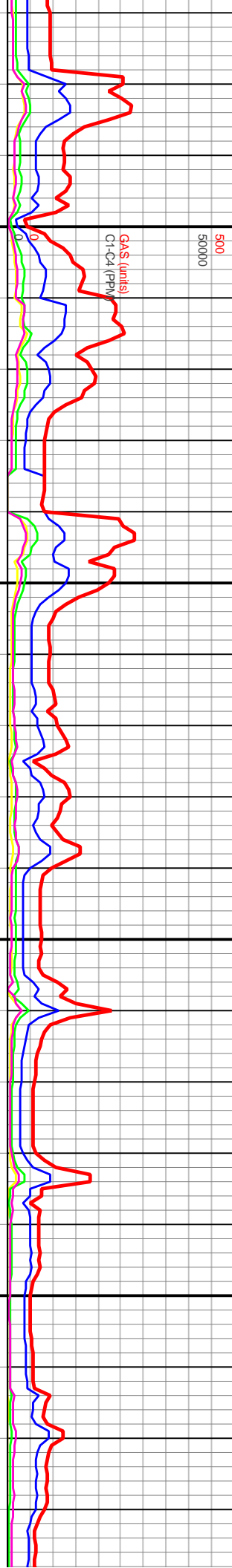
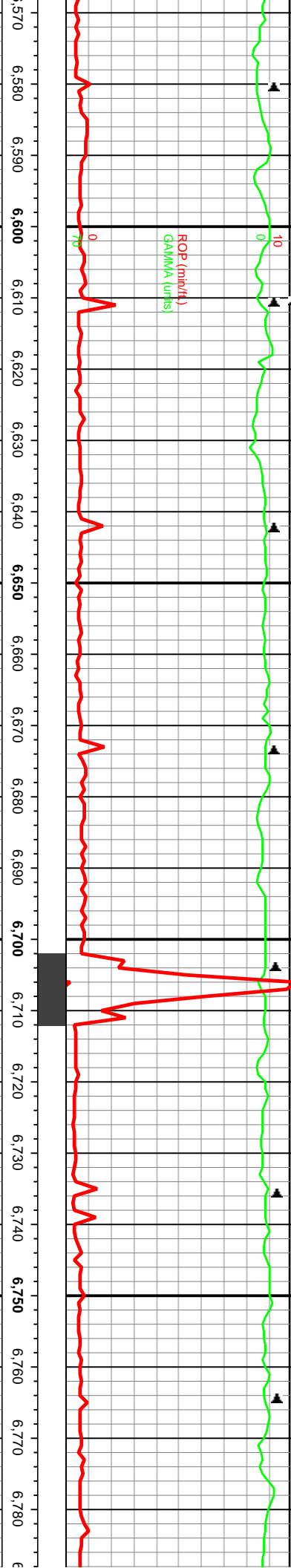










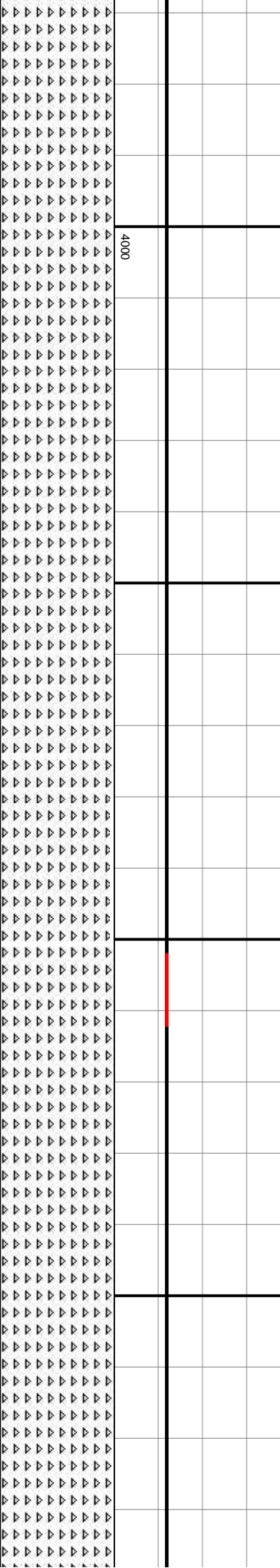


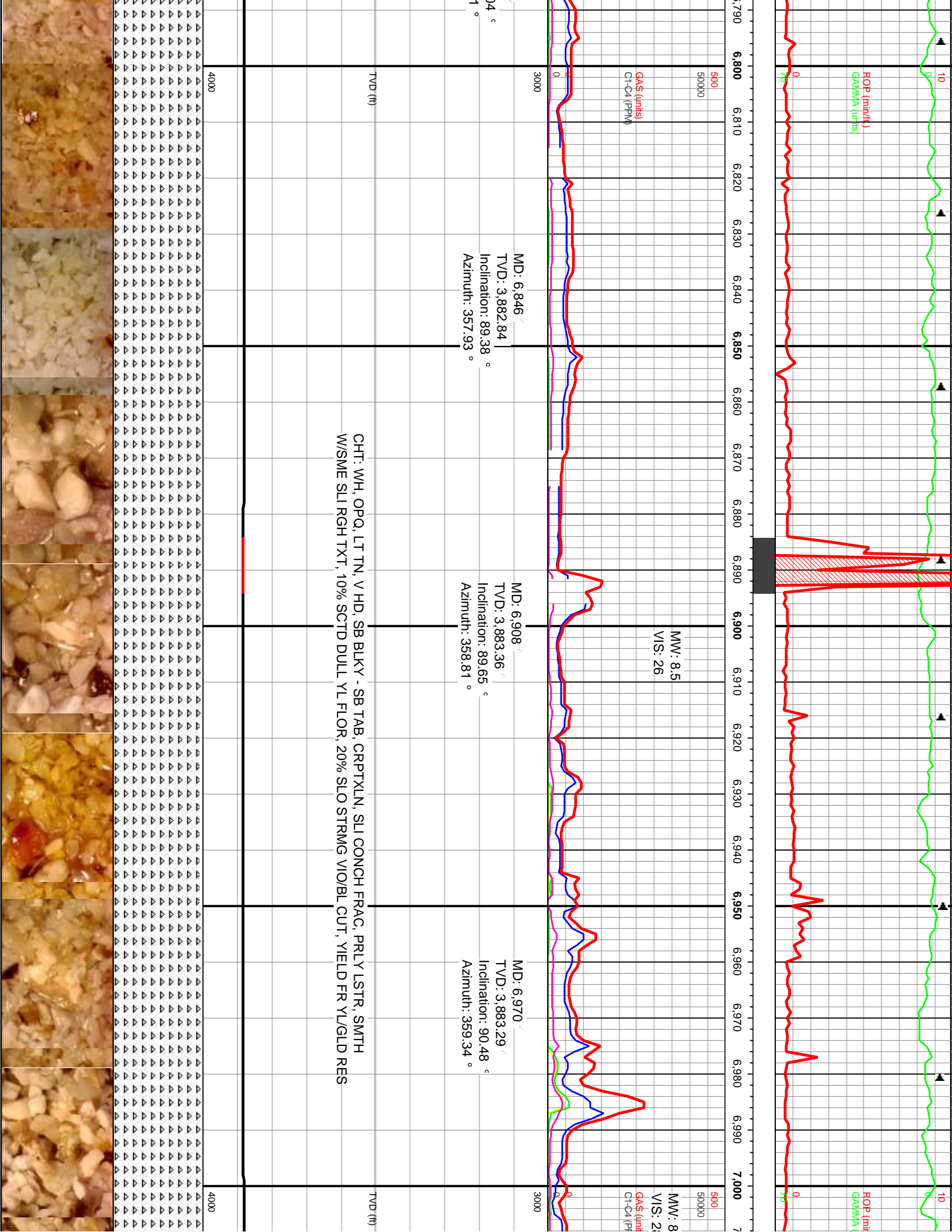
MD: 6,661'
TVD: 3,882.38'
Inclination: 89.17°
Azimuth: 358.46°

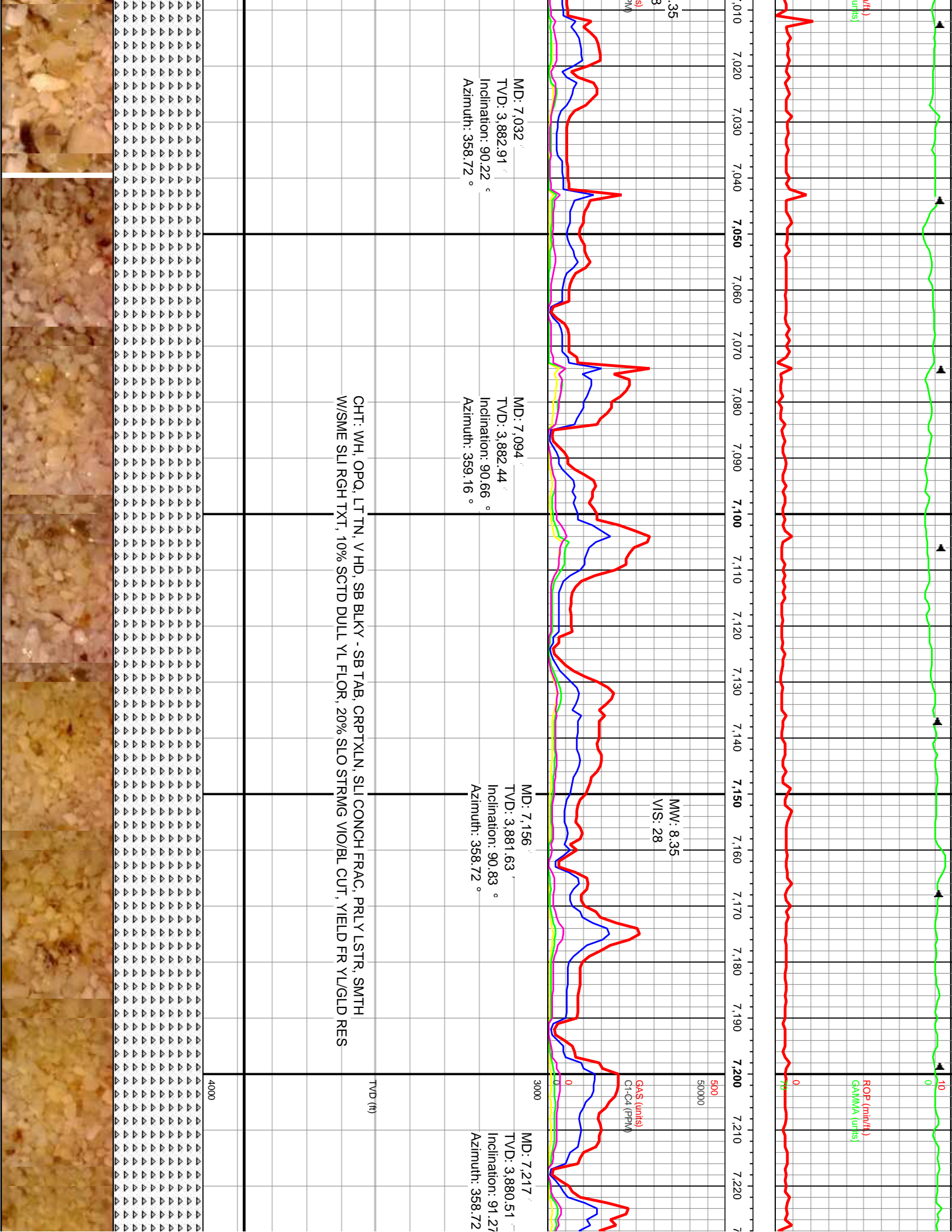
MD: 6,722'
TVD: 3,882.96'
Inclination: 90.26°
Azimuth: 358.64°

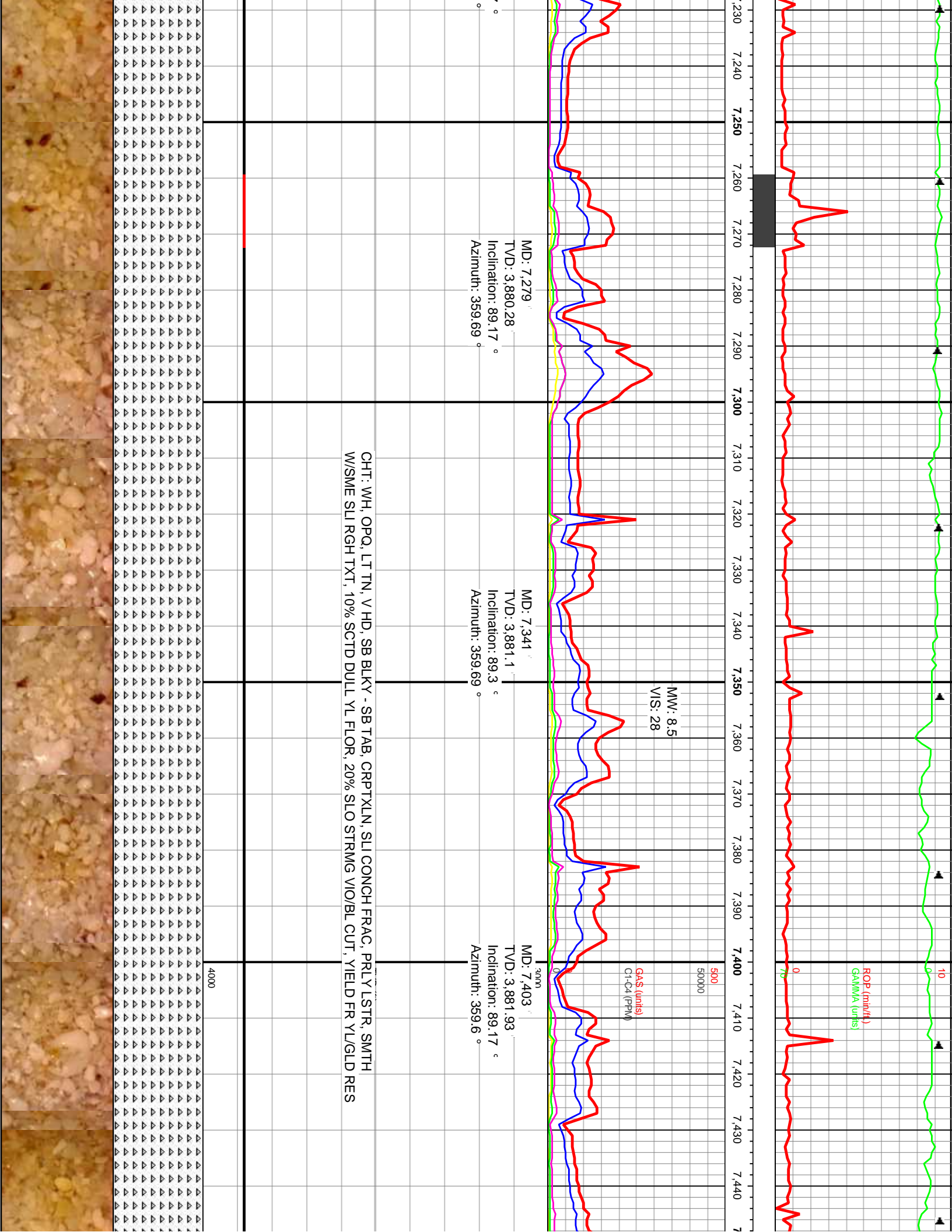
MD: 6,784'
TVD: 3,882.53'
Inclination: 90.0°
Azimuth: 358.1°

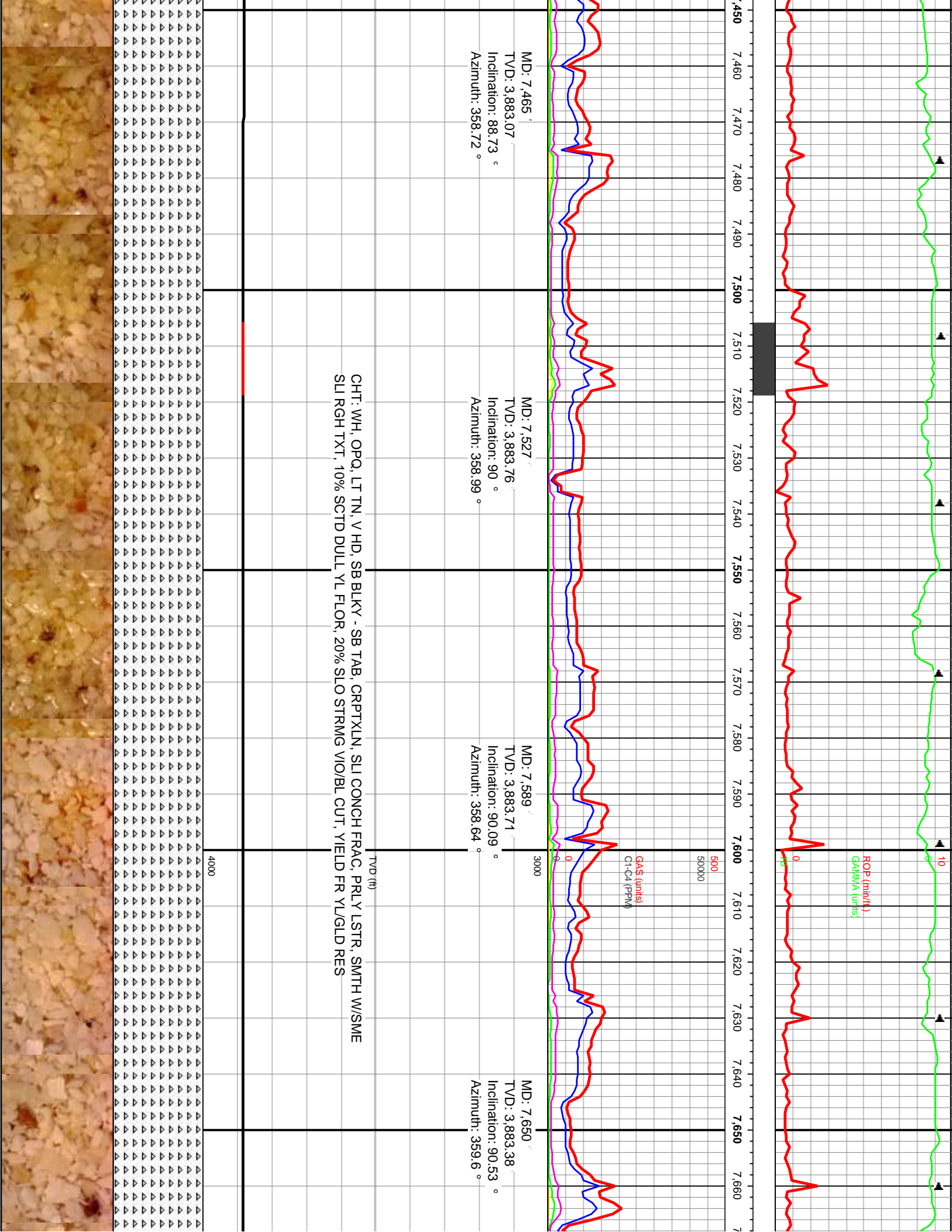
TVD (ft)
 CHT: WH, OPQ, LT TN, V HD, SB BLKY - SB TAB, CRPTXLN, SLI CONCH FRAC, PRL Y LSTR, SMTH W/SME SLI RGH
 TXT, 1% SCTD LT BRN - BRN STN, 5% SCTD DULL YL FLOR, 10% SLO STRMG VIO/BL CUT, YIELD TR YL RES

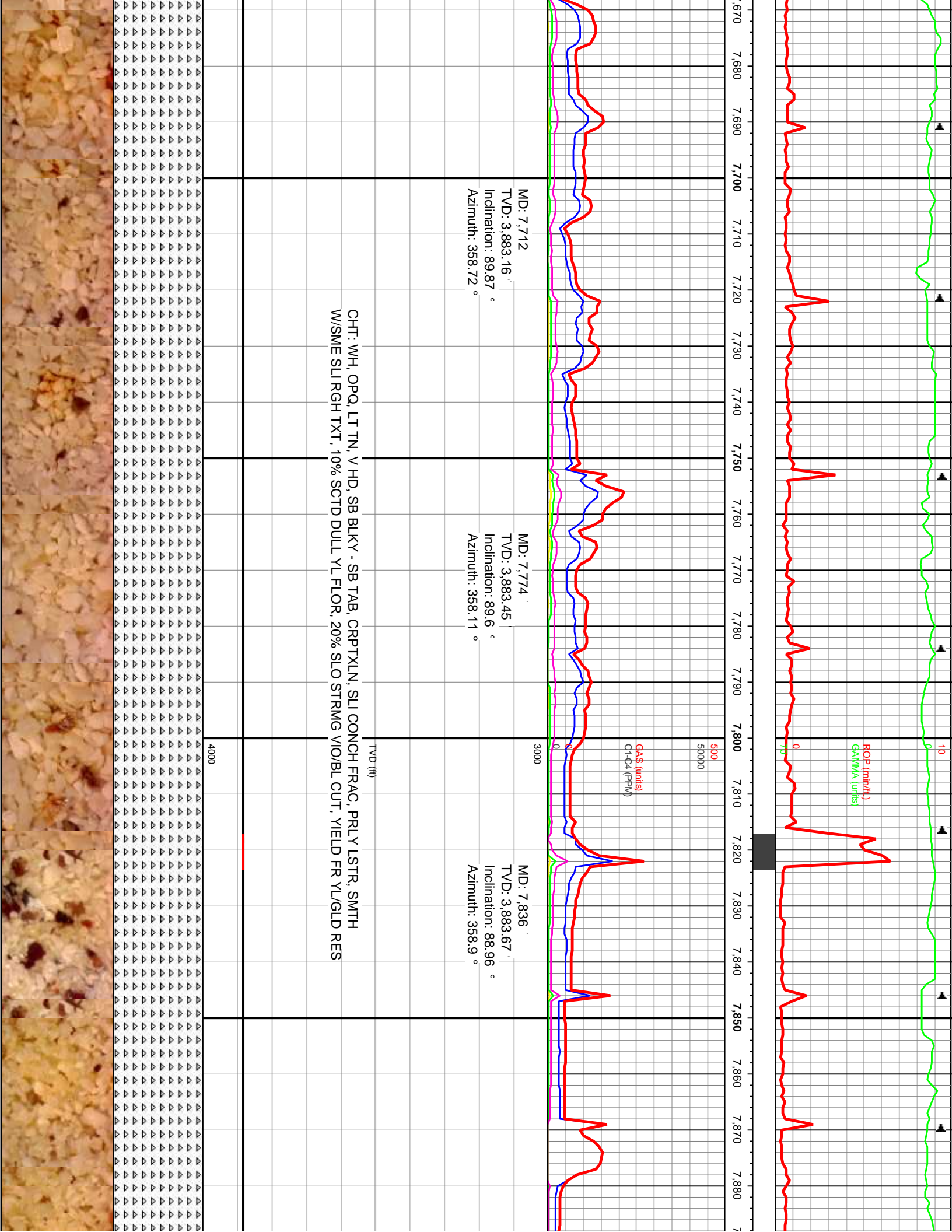


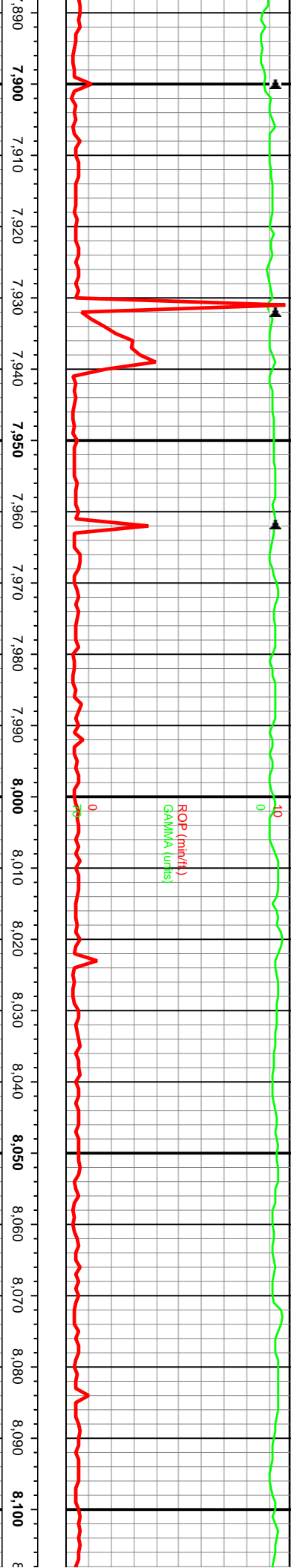












ROP (min/ft)

GAMMA (units)

GAS (units)
C1-C4 (PPM)

500
50000

MD: 7,898'
TVD: 3,883.78'
Inclination: 89.87°
Azimuth: 358.64°

MD: 7,960'
TVD: 3,883.49'
Inclination: 90.66°
Azimuth: 358.99°

MD: 8,021'
TVD: 3,882.88'
Inclination: 90.48°
Azimuth: 358.46°

MD: 8,083'
TVD: 3,882.48'
Inclination: 90.26°
Azimuth: 358.37°

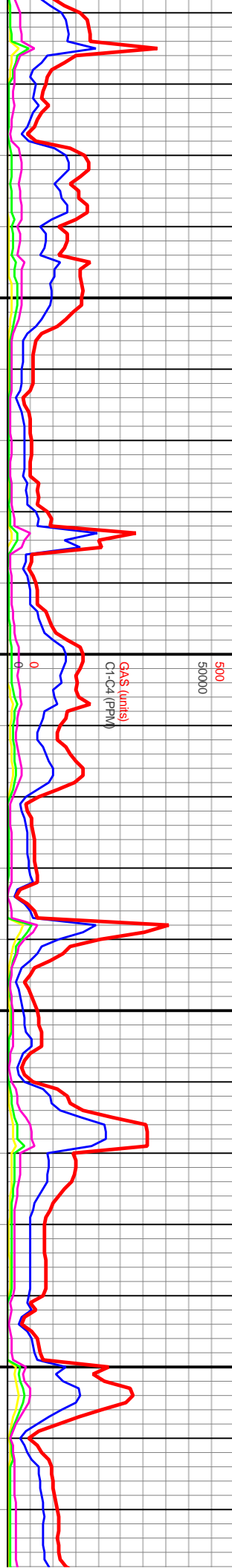
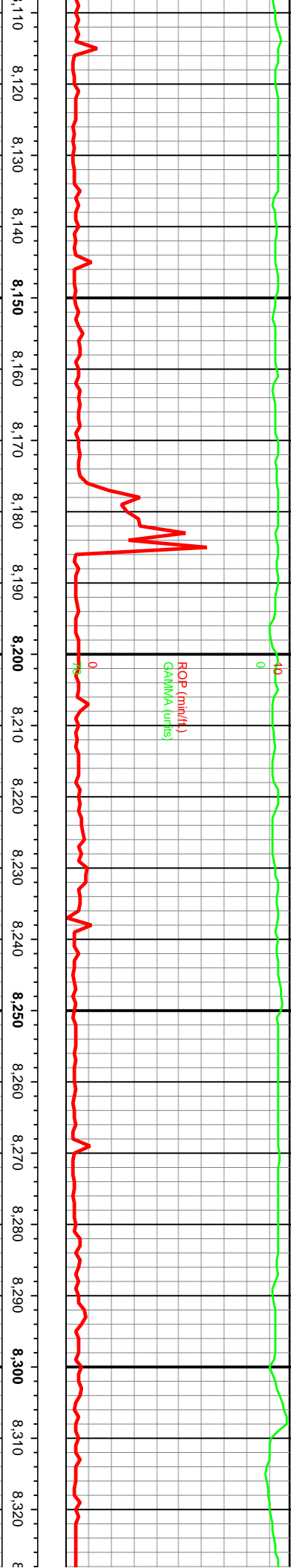
CHT: WH, OPQ, LT TN, V HD, SB BLKY - SB TAB, CRPTXLN, SLI CONCH FRAC, PRLYLSTR, SMTH
W/SME SLI RGH TXT, 10% SCTD DULL YL FLOR, 20% SLO STRMG VO/BL CUT, YIELD FR YL/GLD RES

TVD (ft)

4000



CH
W



MD: 8,145
 TVD: 3,882.68
 Inclination: 89.38 °
 Azimuth: 358.02 °

MD: 8,207
 TVD: 3,882.56
 Inclination: 90.83 °
 Azimuth: 359.16 °

HT: WH, OPQ, LT TN, V HD, SB BLKY - SB TAB, CRPTXLN, SLI CONCH FRAC, PRLY LSTR, SMTH
 W/SME SLI RGH TXT, 10% SCTD DULL YL FLOR, 20% SLO STRMG VIO/BL CUT, YIELD FR YL/GLD RES

CHT: WH, OPQ, LT TN, V HD, SB BLKY - SB TAB, CRPT
 W/SME SLI RGH TXT, 10% SCTD DULL YL FLOR, 20%

