

OPERATOR

Company: Abercrombie Energy, LLC
 Address: 10209 W. Central
 Suite 2
 Wichita, KS 67212
 Contact Geologist: Mark Galyon
 Contact Phone Nbr: 316-262-1841
 Well Name: K-2 Farms #1-17
 Location: Sec. 17-T20S-R34W
 Pool:
 State: Kansas
 API: 15-171-20940-0000
 Field: Wildcat
 Country: USA

Scale 1:240 Imperial

Well Name: K-2 Farms #1-17
 Surface Location: Sec. 17-T20S-R34W
 Bottom Location:
 API: 15-171-20940-0000
 License Number: 32457
 Spud Date: 4/12/2013 Time: 00:00
 Region: Scott County
 Drilling Completed: 4/23/2013 Time: 06:30
 Surface Coordinates: 1500' FSL & 2301' FWL
 Bottom Hole Coordinates:
 Ground Elevation: 3109.00ft
 K.B. Elevation: 3118.00ft
 Logged Interval: 3600.00ft To: 4997.00ft
 Total Depth: 4997.00ft
 Formation: Mississippian
 Drilling Fluid Type: Chemical/Fresh Water Gel

SURFACE CO-ORDINATES

Well Type: Vertical
 Longitude: Latitude:
 N/S Co-ord: 1500' FSL
 E/W Co-ord: 2301' FWL

LOGGED BY

Keith Reavis
Consulting Geologist

Company: Keith Reavis, Inc.
 Address: 3420 22nd Street
 Great Bend, KS 67530
 Phone Nbr: 620-617-4091
 Logged By: KLG #136 Name: Keith Reavis

CONTRACTOR

Contractor: Val Energy, Inc.
 Rig #: 4
 Rig Type: mud rotary
 Spud Date: 4/12/2013 Time: 00:00
 TD Date: 4/23/2013 Time: 06:30
 Rig Release: Time:

ELEVATIONS

K.B. Elevation: 3118.00ft Ground Elevation: 3109.00ft
 K.B. to Ground: 9.00ft

NOTES

Due to the results of DST #2 and electrical log evaluation, it was determined by the operator that 5 1/2 inch production casing be set and cemented and the Marmaton be further tested through perforations and stimulation.

The samples were saved and will be available for review at the Kansas Geological Survey Well Sample Library located in Wichita, KS

Respectfully submitted,
Keith Reavis

Abercrombie Energy, LLC

daily drilling report









DATE	7:00 AM DEPTH	REMARKS
04/16/2013	3670	Geologist Keith Reavis on location @ 0145 hrs, 3562 ft., drilling ahead Topeka, Lecompton, Heebner, Toronto - bit trip @ 4009 ft, 2215 hrs
04/17/2013	4048	complete bit trip, very tight first 10 stands, resume drilling @ 0450 hrs, drilling ahead, LKC group
04/18/2013	4362	drilling ahead, lower LKC, Stark, show in K zone warrants DST, short trip, ctch, TOH for DST #1, complete DST #1, successful test, TIH w/bit, resume drilling 2135 hrs
04/19/2013	4498	drilling ahead, lower LKC, BKC, Marmaton, show in "C" bench warrants test, TOH for DST #2, conduct and complete DST #2, successful test
04/20/2013	4574	TIH w/bit, resume drilling, show in "D" bench warrants test, TOH for DST #3, conduct DST #3, successful test, back in hole w/bit, resume drilling, Pawnee, show warrants test, start out of hole for DST #4
04/21/2013	4607	TOH for DST #4, conduct and complete DST #4, successful test, back in hole with bit, drill Ft. Scott, show warrants test, TOH for DST #5, conduct and complete DST #5, successful test
04/22/2013	4690	in hole w/bit, resume drilling, Cherokee, Morrow
04/23/2013	4997	drilling ahead, Morrow, Mississippian, TD @ 4997', short trip, ctch, TOH for logs, conduct logging operations, geologist off location 1900 hrs

Abercrombie Engery, LLC

well comparison sheet

DRILLING WELL				COMPARISON WELL				COMPARISON WELL				
K-2 Farms				Trans-Western Minnix #1				Abercrombie 1-9 Moore				
1500' FSL & 2301' FWL				SE NE NW				1800' FSL & 1390' FEL				
Sec 17-20S-34W				Sec 20-20S-34W				Sec 9-20S-34W				
3118 KB				3110 KB				3069 KB				
				Structural Relationship				Structural Relationship				
Formation	Sample	Sub-Sea	Log	Sub-Sea	Log	Sub-Sea	Sample	Log	Sub-Sea	Sample	Log	
King Hill	3823	-705	3823	-705	3813	-703	-2	-2	3795	-726	21	21
Heebner	3969	-851	3969	-851	3965	-855	4	4	3940	-871	20	20
Lansing	4016	-898	4012	-894	4010	-900	2	6	3986	-917	19	23
Muncie Creek	4218	-1100	4216	-1098	4212	-1102	2	4	4186	-1117	17	19
Stark	4330	-1212	4327	-1209	4326	-1216	4	7	4299	-1230	18	21
Base KC	4465	-1347	4468	-1350	4464	-1354	7	4	4436	-1367	20	17
Marmaton	4491	-1373	4493	-1375	4491	-1381	8	6	4462	-1393	20	18
Pawnee	4589	-1471	4600	-1482	4595	-1485	14	3	4554	-1485	14	3
Cherokee	4625	-1507	4640	-1522	4631	-1521	14	-1	4590	-1521	14	-1
Morrow	4817	-1699	4830	-1712	4820	-1710	11	-2	4776	-1707	8	-5
Mississippian	4923	-1805	4917	-1799	4889	-1779	-26	-20	4881	-1812	7	13
Total Depth	4997	-1879	4998	-1880	5052	-1942	63	62	4982	-1913	34	33

ROCK TYPES

 sdymst	 Lmst fw7>	 shale, gr	 shale, red
 Lmst fw<7	 shale, grn	 Carbon Sh	 Ss

ACCESSORIES

MINERAL

- Argillaceous
- ▲ Chert, dark
- ∠ Dolomitic
- P Pyrite
- △ Chert White

FOSSIL

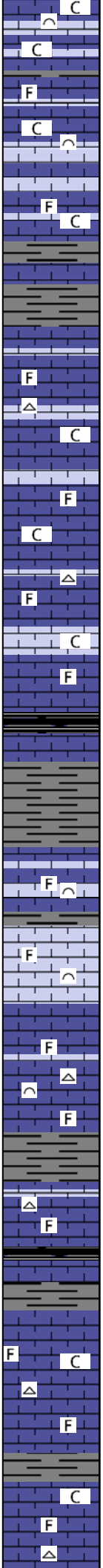
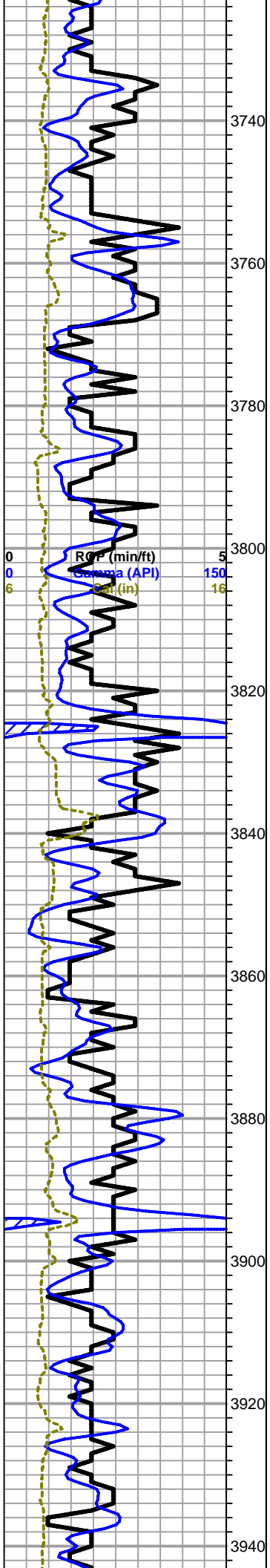
- ∩ Bioclastic or Fragmental
- F Fossils < 20%
- ⊕ Oolite
- ⊙ Pellets
- ⊕ Oomoldic

STRINGER

- Sandstone
- Shale
- green shale
- red shale
- carb shale

TEXTURE

- C Chalky
- CX Cryptocrystalline
- L Lithogr



no shows
 as above
 as above
 as above
King Hill 3823 -705 (log 3823 -705)
 as above

limestone, mixed gray to cream and tan, microcrystalline, mostly grainy fossiliferous, chalky, some scattered pinpoint porosity, no shows, abundant chalk in samples, some scattered light gray-gray mottled fossiliferous chert

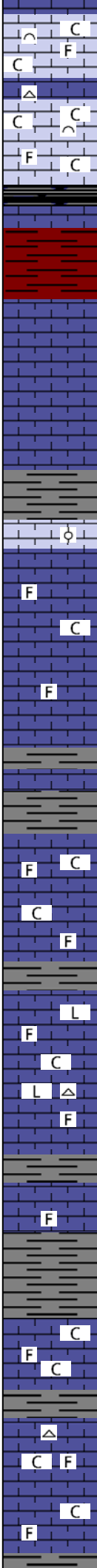
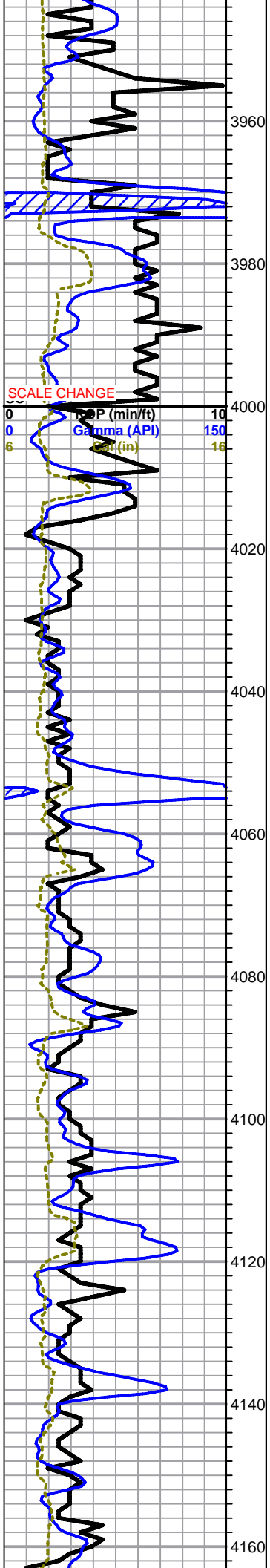
limestone, light gray to cream, microcrystalline, fossiliferous to bioclastic, grainy, chalky, poor overall porosity, abundant chalk, no shows

grades to limestone, light gray, cryptocrystalline, fossiliferous to lithographic, dense, with some scattered light gray chert, no shows

as above, still carrying abundant grainy fossiliferous to bioclastic limestones as from 3840-3860, no shows

limestone, light gray, mixed micro-cryptocrystalline, fossiliferous, dense to chalky, poor visible porosity, some scattered light gray cherts, no shows, moderate chalk in samples

0	Total Gas (units)	100
0	C1 (units)	100
0	C2 (units)	100
0	C3 (units)	100
0	C4 (units)	100



limestone, gray to tan and light brown, microcrystalline, grainy fossiliferous to bioclastic, poor visible porosity, flood chalk, appx 40-50% of sample, trace chert, no shows

Heebner 3969 -851 (log 3969 -851)

shale, black carbonaceous, trace gray shale, pyritic, some pyrite replaced fossil frags

4000' sample, flood shale, bright brick red/orange, blocky

poor samples after bit trip @ 4009' - no cfs samples here

Lansing 4016 -898 (log 4012 -894)

limestone, some cream oolitic, poor visible porosity, chalky to dense cemented recrystallized oolites, no shows, grades to limestone, mixed cream to gray, microcrystalline, fossiliferous, abundant chalk in samples, no shows

limestone, light gray, microcrystalline, fossiliferous, chalky, no visible porosity, fairly homogeneous, abundant chalk, trace chert, no shows

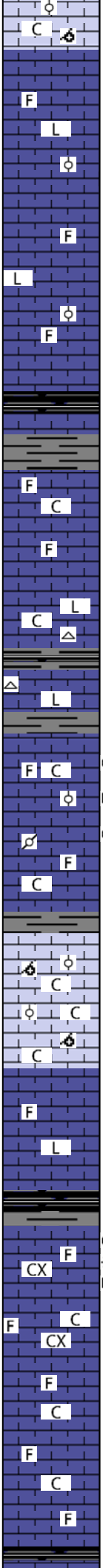
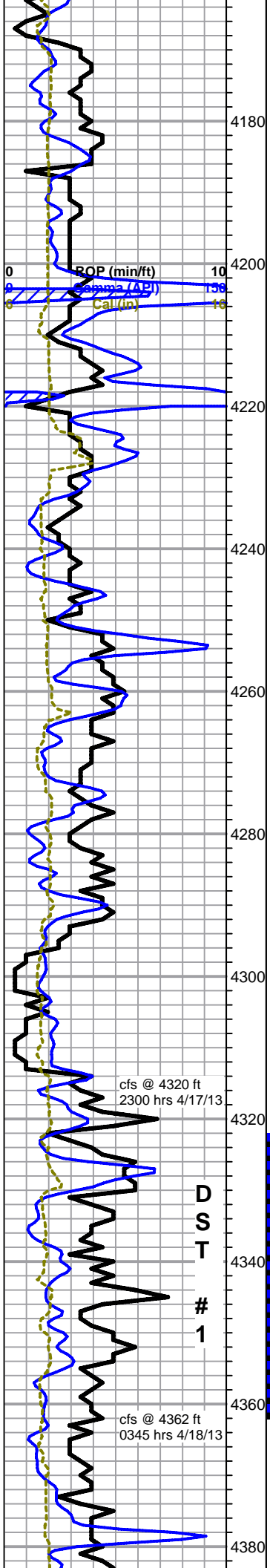
limestone, light gray to cream, micro-cryptocrystalline, fossiliferous to smooth lithographic, chalky in part, no visible porosity or shows

as above

limestone, light gray, micro-cryptocrystalline, fossiliferous, dense to chalky, abundant chalk, trace chert, no shows

0	Total Gas (units)	100
0	bit trip @ 4009 ft	100
0	2215 hrs 4/16/13	100
0	strap .04 ft STB	100
0	deviation 1/4 deg	100

Mud-Co Mud chk @ 4065 ft. 0815 hrs. 4/17/13
 Vis. 51 Wt. 9.2
 PV 16 YP 18
 WL 6.4
 Cake 1/32,
 pH 11.0
 CHL 5800 ppm
 Ca 40 ppm
 Sol 6.1 LCM 2#
 DMC \$186.75
 CMC \$10490.95



limestone, light gray, oolitic to oomoldic, trace pyritic, some fair mold porosity, abundant chalk, barren

limestone, gray to light gray, cryptocrystalline, fossiliferous to lithographic, dense, limestone, cream, micro-cryptocrystalline, fossiliferous to lithographic, some oolitic, chalky, no shows

as above

Muncie Creek 4218 -1100 (log 4216 -1098)

shale, black carbonaceous

limestone, gray, microcrystalline, fossiliferous, some large clasts, dense, some slight sucrosic texture (not dolomitic), dense, with limestone, cream, microcrystalline, fossiliferous, chalky, no visible porosity, no shows

grades to limestone, cream to white, cryptocrystalline, slightly fossiliferous, fairly chalky, no porosity, some scattered white fresh chert, no shows

mixed limestones, cream to light gray, micro-cryptocrystalline, fossiliferous to lithographic, limestone, light gray, chalky, arenaceous, limestone, gray, grainy fossiliferous to pelletal, scattered show in limestone, gray-cream grainy foss to oolitic, some pinpoint porosity, mostly chalk filled, slight film on water, slight stain, some heavy/scaley oil on break, faint odor, few specimens with slow milky blueish/white cut, some with no cut, overall fairly even mineral fluorescence in tray, abundant chalk

limestone, light gray to tan and cream, oomoldic, some oolitic, good large oomold porosity, some interconnecting, some chalk filled, flood chalk in samples, barren, good even yellow/green mineral fluorescence, strong sour odor

limestone, gray to cream, cryptocrystalline, fossiliferous to lithographic, dense, carrying abundant oom/ool limestone and chalk from above

Stark Shale 4330 -1212 (log 4327 -1209)

limestone, light gray to gray, crypto-microcrystalline, fossiliferous, fairly dense, variable solution etching to large solution vugs, secondary calcite in vug walls, brown staining along etching and through vugs, bleeding gas, show heavy free oil on break, fair-weak odor, good even green mineral fluorescence, slow to fast bright white streaming cut with halo

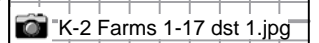
4360 sample and cfs, a.a., decreasing show, influx cream chalky limestone, trace staining, abundant chalk, some staining in chalk, still faint to fleeting odor

limestone, mixed gray to cream and white, fossiliferous, chalky to dense, abundant chalk, abundant red shale and trip trash

limestone, light gray, cryptocrystalline, lithographic to fossiliferous

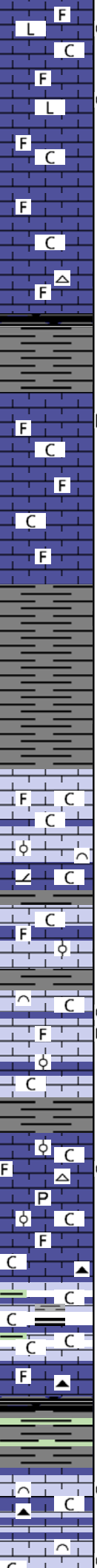
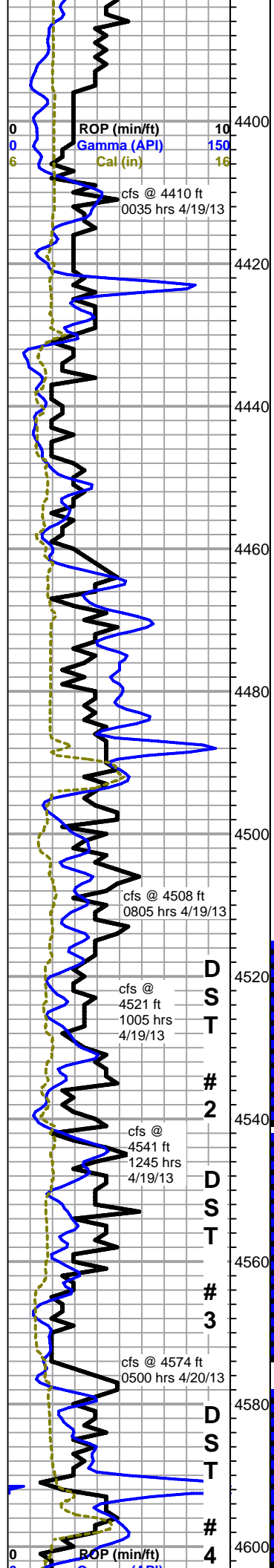
0	Total Gas (units)	100
0	C1 (units)	100
0	C2 (units)	100
0	C3 (units)	100
0	C4 (units)	100

questionable drill time from 4320-29' - weight indicator not working, water in lines, shut down at 4329' and fix



NOTE: DST results and charts printed at bottom of report

Mud-Co Mud chk @ 4362 ft. 1445 hrs. 4/18/13 Vis. 47 Wt. 9.4 PV 12 YP 16 WL 8.0 Cake 1/32, pH 10.0 CHL 4000 ppm Ca 40 ppm



limestone, light gray, cryptocrystalline, micrographic to fossiliferous, 2 pieces with light brown stain, no show free oil, faint sour brackish odor

4410 sample, a.a. with limestone, gray to tan mottled, microcrystalline, fossiliferous, some large clasts, very dense, found 2 pieces with some small stained vugs, trace gas bubbles, 1 piece had a dark tarry oil on break (very dense), overall good mineral fluorescence in tray, 2 show pieces had light fluorescence, fair slow streaming white cut, no odor in wet cup

cfs samples grades back to limestone, light gray, cryptocrystalline, lithographic to fossiliferous, limestone, light gray to cream, chalky fossiliferous, poor visible porosity, abundant chalk, no show or odor

as above, some light gray fossiliferous chert

limestone, mixed cream to gray, micro-cryptocrystalline, chalky fossiliferous, some mottled pelletal, 1 small cryptocrystalline chip and one partial ammonite clast with clingy tarry oil in 4470 sample, no other shows, no odor in wet cups, poor overall visible porosity, abundant chalk

Base KC 4465 -1347 (log 4468 -1350)
only some scattered shales in samples, slight gray wash

Marmaton 4491 -1373 (log 4493 -1375)
limestone, light gray to cream and white, fossiliferous to oolitic/bioclastic, chalky, some gray chalky pelletal, some dense brown microcrystalline oolitic, light gray soft arenaceous limestone, abundant chalk, no shows

cfs samples, a.a., flood chalk, heavy chalky wash, some gray fine crystalline dolomitic limestone, dense, no shows

limestone, mixed, cream to white and light gray, bioclastic to oolitic, tan to cream cryptocrystalline fossiliferous, dense, gray microcrystalline to arenaceous dolomitic limestone, some pyritic, poor porosity, abundant chalk in samples, no shows

as above with chalky weathered white-cream fossiliferous, lt. brown sat. stain, slight show free oil on break, trace oolitic, white, some interoolite porosity, black inter oolite stain, some light gray cryptocrystalline with edge etching and stain, slight show free oil in wet cup, fleeting odor, fair mineral fluorescence, variable cut -excellent bright white with halo to fair slow

4550 sample, trip trash, poor samples

4560 sample, mixed, tan-cream-white, microcrystalline, chalky fossiliferous to oolitic, limestone, gray, microcrystalline, dense fossiliferous to arenaceous, gray cryptocrystalline lithographic, brown dense fossiliferous - 2 pieces light gray cryptocrystalline, fractured with solution etching and stain along fractures, breaks easy, sl. show oil, 1 large piece white oolitic, good inter-oolite porosity, good inter-oolite stain, bleeding oil, good to excellent bright milky white cut - fleeting odor in wet cup, abundant chalk, some pyrite nodules and tan and gray opaque chert

4570 and 74 samples, as above, no shows found

30 min cfs marked influx light gray/black, green and brown shale, 60 min sample flood chalk, appx 70% sample

limestone, gray to light brown, dense cherty fossiliferous, some brown chert

4600 samp, shale, gray, grainy to silty, dense, some green and black carb, 4607 almost all shale in cup

Pawnee 4589 -1471 (log 4600 -1482)
limestone, white to light gray, bioclastic, chalky, grainy, some fair interclast porosity, limestone, gray, cryptocrystalline, dense bioclastic, some gray fossiliferous chert, abundant chalk, some small pieces of chalky bioclastic with dark interclast stain, free oil on break, fair slow milky/green cut with halo, trace free oil in tray, fair green mineral

Sol 7.6 LCM 1#		DMC \$995.85	CMC \$11486.80
0	Total Gas (units)	100	
0	C1 (units)	100	
0	C2 (units)	100	
0	C3 (units)	100	
0	C4 (units)	100	

NOTE: DST results and charts printed at bottom of report

Mud-Co Mud chk @ 4504 ft. 0730 hrs. 4/19/13
Vis. 50 Wt. 9.4
PV 10 YP 14
WL 6.4
Cake 1/32, pH 10.5
CHL 7000 ppm
Ca 80 ppm
Sol 7.4 LCM 1#
DMC \$1759.20
CMC \$13246.00

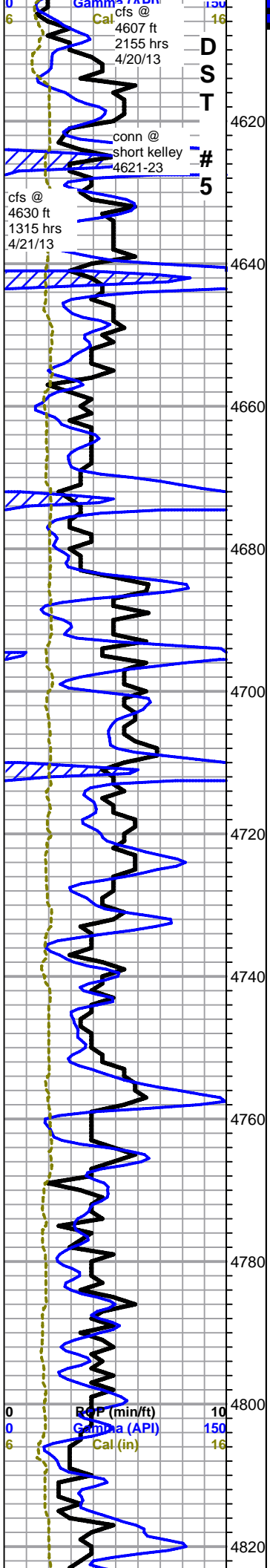
.K-2 Farms 1-17 dst 2.jpg

.K-2 Farms 1-17 dst 3.jpg

.K-2 farms 1-17 dst 4.jpg

.K-2 farms 1-17 dst 5.jpg

Mud-Co Mud chk @ 4574 ft. 1425 hrs. 4/20/13
Vis. 42 Wt. 9.5
PV 10 YP 12
WL 8.0
Cake 1/32, pH 10.5
CHL 9000 ppm
Ca 80 ppm
Sol 8.0 LCM 2#
DMC \$132.30
CMC \$13378.30



fluorescence, no odor in wet cup

Fort Scott 4611-1493 (log 4626 -1508)

limestone, tan to gray, homogeneous mature oolitic, cryptocrystalline matrix, dense to chalky, poor visible porosity, trace interoolite stain, chalky pieces almost all have many small oil droplets on break, faint fluorescence, good to fair milky cut with halo, no odor in wet cup - see side column ---->>>

Cherokee 4625 -1507 (log 4640 -1522)

cfs samples, black carbonaceous shale, tan-gry fossiliferous limestone, some gray mottled pelletal, cream chalky fossiliferous, dense gray fossiliferous, no shows

samples after DST, poor, trip trash, mixed limestones and shales, no shows

4660 samp, increase mixed limestone, cream to gray, dense to chalky, fossiliferous, some gray oblong oolitic, abundant black gray and green shale, abundant chalk, some pyrite, no shows

limestone, cream to light gray, microcrystalline, fossiliferous, chalky but dense, mixed very dense gray limestone, fossiliferous to pelletal in part, some grainy, scattered fair mineral fluorescence, scattered cherts, some chalk, mixed black, gray and green shales

as above, increasing shales

limestone, mixed, mostly cream to light gray chalky grainy oolitic to fossiliferous, light gray to tan, cryptocrystalline, dense fossiliferous, mixed shales, some chalk - some gray argillaceous fossiliferous limestone

4740 sample, limestone as above, flood shales

4750 sample, shale and limestones as above, influx black obsidian like chert and brown fossiliferous cherts

limestone, light gray, chalky mixed fossiliferous to oolitic and bioclastic, no visible porosity, limestone, gray to tan, cryptocrystalline, fossiliferous, dense, mixed black, brown and tan cherts, still abundant shales

limestones as above, with influx limestone, gray, cryptocrystalline, lithographic, and dense fossiliferous limestone, gray and brown, some large clasts, slight increase in cherts, some mixed shales

Morrow 4817 -1699 (log 4830 -1712)

still carrying mostly limestone and cherts, 4830 sample, influx some shale. variable pale to bright green. pale gray. light brown. some

0	C1 (units)	100
0	C2 (units)	100
0	C3 (units)	100
0	C4 (units)	100

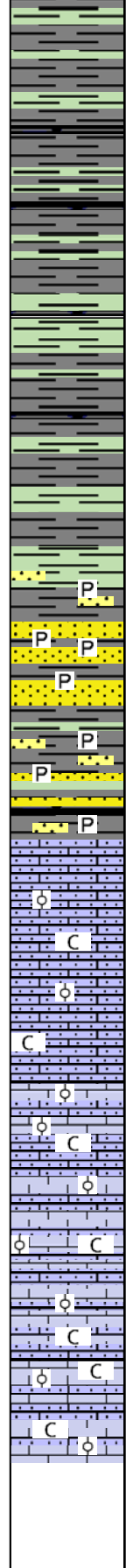
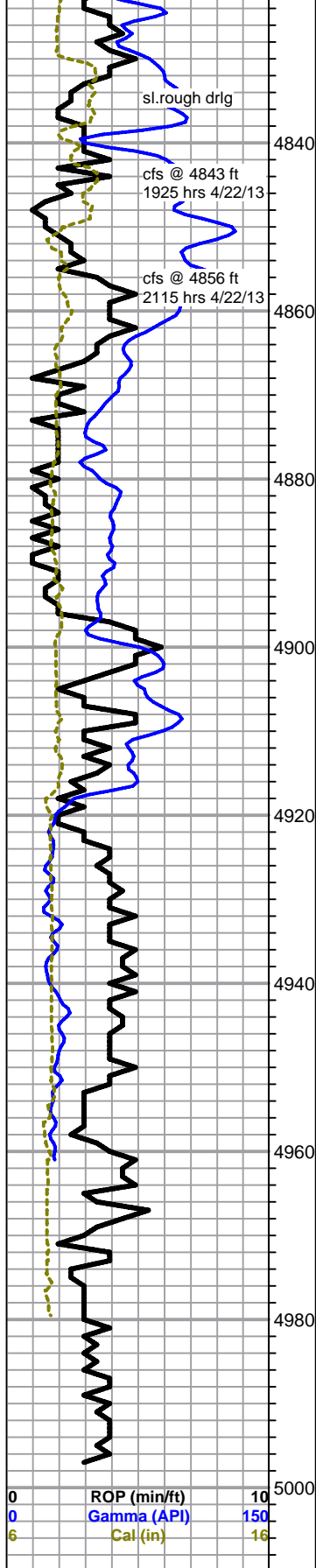
4630 sample - lower Ft. Scott grades to limestone, gray mottled bioclastic, chalky in part, no visible porosity, no show

Mud-Co Mud chk @ 4607 ft.
0745 hrs. 4/21/13
Vis. 42 Wt. 9.2
PV 10 YP 12
WL 6.4
Cake 1/32,
pH 10.5
CHL 6500 ppm
Ca 80 ppm
Sol 6.6 LCM 1#
DMC \$713.65
CMC \$14091.95

NOTE: DST results and charts printed at bottom of report

Mud-Co Mud chk @ 4744 ft.
1230 hrs. 4/22/13
Vis. 52 Wt. 9.3
PV 16 YP 18
WL 7.2
Cake 1/32,
pH 10.5
CHL 6000 ppm
Ca 80 ppm
Sol 6.8 LCM 2#
DMC \$866.55
CMC \$14958.50

0	Total Gas (units)	100
0	C1 (units)	100
0	C2 (units)	100
0	C3 (units)	100
0	C4 (units)	100



weathered gray mottled fossiliferous limestone, speckled gray fossiliferous/spiculitic cherts

increasing shales, pale green, silty, dark green mottled, gray, light brown and black, still mostly limestone and chert as above in samples

shales as above, some fossiliferous, some laminated green/black, some pyrite, still carrying mostly limestones as above and abundant black chert

shales as above, abundant pyrite nodules

4910 samp influx sandstone, dirty gray, very fine grain, sub-round to sub-angular, fair sorting, silty, dolomitic, fairly cemented, no shows

4920 sample slight increase in sandstone, increase pyrite nodules, note some bryozoan stems

Mississippian 4923 -1805 (log 4917 -1799)

limestone, white to light gray, sandy micro-oolitic, chalky to very chalky, no shows

as above with limestone, light gray to cream, sub-mature to mature medium oolitic, some sand grains, chalky, poor visible porosity, no shows

as above, abundant chalk

grades to mix of appx 50/50 above limestone facies with influx of some tan to light gray, fine mature oolitic, very dense, some light gray cryptocrystalline flattened oolitic, abundant chalk, flood shale in 60 min sample, no shows

Rotary TD 4997 ft @ 0630 hrs, 4/23/13
Nabors Log TD 4998 ft.
Complete Logging Operations 1800 hrs 4/23/13

Mud-Co Mud chk @ 4993 ft. 0615 hrs. 4/23/13 Vis. 56 Wt. 9.4 PV 17 YP 21 WL 8.8 Cake 1/32, pH 10.0 CHL 5800 ppm Ca 60 ppm Sol 7.4 LCM 3# DMC \$1363.10 CMC \$16321.60		
deviation survey 1/2 deg		
0	Total Gas (units)	100
0	C1 (units)	100
0	C2 (units)	100
0	C3 (units)	100

DRILL STEM TEST REPORT

Abercrombie Energy, LLC
 10209 W. Central STE 2
 Wichita, Ks 67212
 ATTN: Keith Reavis

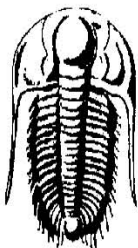
17 20s 34w Scott Ks

K-2 Farms 1-17

Job Ticket: 49168

DST#: 1

Test Start: 2013.04.18 @ 10:03:00



**TRILOBITE
 TESTING, INC.**

GENERAL INFORMATION:

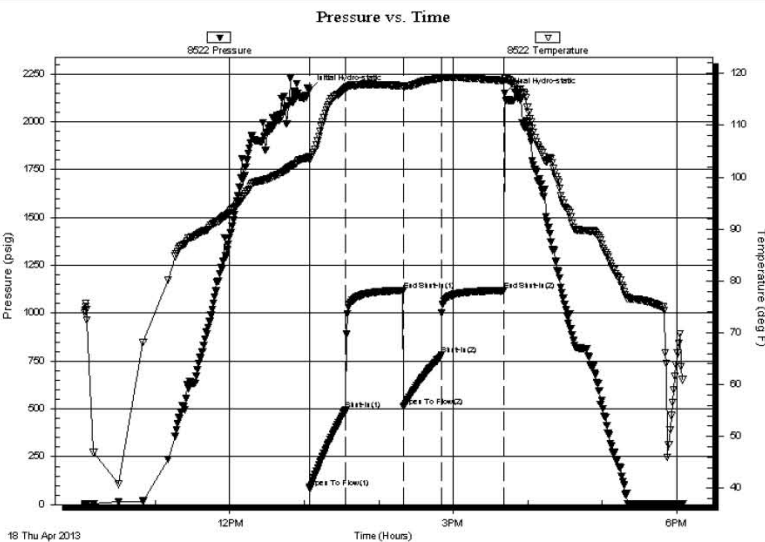
Formation: **LKC "K"**
 Deviated: No Whipstock: ft (KB)
 Time Tool Opened: 13:04:15
 Time Test Ended: 18:05:00
 Test Type: Conventional Bottom Hole (Initial)
 Tester: Bradley Walter
 Unit No: 53
 Interval: **4322.00 ft (KB) To 4362.00 ft (KB) (TVD)**
 Total Depth: 4322.00 ft (KB) (TVD)
 Hole Diameter: 7.88 inches Hole Condition: Good
 Reference Elevations: 3118.00 ft (KB)
 3109.00 ft (CF)
 KB to GR/CF: 9.00 ft

Serial #: 8522

Outside

Press@RunDepth: 781.19 psig @ 4323.00 ft (KB) Capacity: 8000.00 psig
 Start Date: 2013.04.18 End Date: 2013.04.18 Last Calib.: 2013.04.18
 Start Time: 10:03:05 End Time: 18:04:59 Time On Btm: 2013.04.18 @ 13:03:45
 Time Off Btm: 2013.04.18 @ 15:41:45

TEST COMMENT: IF: BOB @ 1 3/4 min.
 IS: No return.
 FF: BOB @ 3 min.
 FSI: No return.



PRESSURE SUMMARY

Time (Min.)	Pressure (psig)	Temp (deg F)	Annotation
0	2166.12	103.89	Initial Hydro-static
1	84.71	103.38	Open To Flow (1)
30	495.46	117.10	Shut-in(1)
76	1118.06	117.57	End Shut-in(1)
76	509.36	117.32	Open To Flow (2)
107	781.19	119.03	Shut-in(2)
158	1119.31	118.60	End Shut-in(2)
158	2148.34	118.92	Final Hydro-static

Recovery

Length (ft)	Description	Volume (bbl)
1620.00	mcw 5m 95w	15.96

Gas Rates

Choke (inches)	Pressure (psig)	Gas Rate (Mcf/d)

DRILL STEM TEST REPORT

Abercrombie Energy, LLC

17 20s 34w Scott Ks

10209 W. Central STE 2
Wichita, Ks 67212

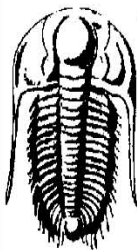
K-2 Farms 1-17

Job Ticket: 49169

DST#: 2

ATTN: Keith Reavis

Test Start: 2013.04.19 @ 15:55:00



TRILOBITE
TESTING, INC

GENERAL INFORMATION:

Formation: **Marmaton**

Deviated: No Whipstock: ft (KB)

Time Tool Opened: 18:13:15

Time Test Ended: 23:57:30

Test Type: Conventional Bottom Hole (Reset)

Tester: Bradley Walter

Unit No: 53

Interval: **4515.00 ft (KB) To 4541.00 ft (KB) (TVD)**

Total Depth: 4541.00 ft (KB) (TVD)

Hole Diameter: 7.88 inches Hole Condition: Good

Reference Elevations: 3118.00 ft (KB)

3109.00 ft (CF)

KB to GR/CF: 9.00 ft

Serial #: **8522** Outside

Press@RunDepth: 109.25 psig @ 4516.00 ft (KB)

Start Date: 2013.04.19

End Date: 2013.04.19

Start Time: 15:55:05

End Time: 23:57:29

Capacity: 8000.00 psig

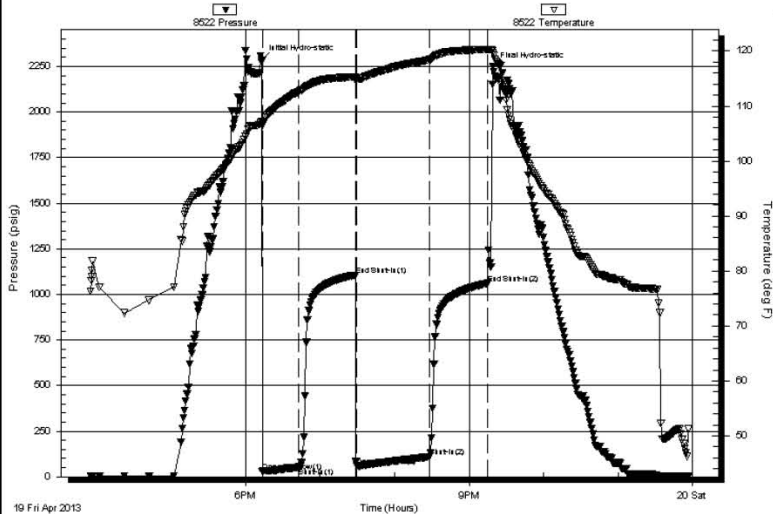
Last Calib.: 2013.04.19

Time On Btm: 2013.04.19 @ 18:13:00

Time Off Btm: 2013.04.19 @ 21:19:15

TEST COMMENT: IF: BOB @ 8 min.
IS: 5" return.
FF: BOB @ 5 min.
FSI: 3" return.

Pressure vs. Time



PRESSURE SUMMARY

Time (Min.)	Pressure (psig)	Temp (deg F)	Annotation
0	2286.01	107.14	Initial Hydro-static
1	26.68	106.47	Open To Flow (1)
30	53.38	112.63	Shut-In(1)
76	1105.99	115.30	End Shut-In(1)
77	58.52	115.01	Open To Flow (2)
135	109.25	118.43	Shut-In(2)
182	1060.41	120.24	End Shut-In(2)
187	2246.95	119.57	Final Hydro-static

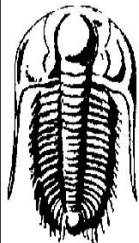
Recovery

Length (ft)	Description	Volume (bbl)
120.00	gmco 35g 15m 50o	1.04
115.00	gsmco 35g 5m 60o	1.14
0.00	1150 GIP	0.00

Gas Rates

Choke (inches)	Pressure (psig)	Gas Rate (Mcf/d)

* Recovery from multiple tests



**TRILOBITE
TESTING, INC.**

DRILL STEM TEST REPORT

Abercrombie Energy, LLC

17 20s 34w Scott Ks

10209 W. Central STE 2
Wichita, Ks 67212

K-2 Farms 1-17

ATTN: Keith Reavis

Job Ticket: 49170

DST#: 3

Test Start: 2013.04.20 @ 08:23:00

GENERAL INFORMATION:

Formation: **Marmaton**

Deviated: No Whipstock: ft (KB)

Time Tool Opened: 10:50:45

Time Test Ended: 16:00:00

Test Type: Conventional Bottom Hole (Reset)

Tester: Bradley Walter

Unit No: 53

Interval: 4552.00 ft (KB) To 4574.00 ft (KB) (TVD)

Reference Elevations: 3118.00 ft (KB)

Total Depth: 4574.00 ft (KB) (TVD)

3109.00 ft (CF)

Hole Diameter: 7.88 inches Hole Condition: Good

KB to GR/CF: 9.00 ft

Serial #: 8522 Outside

Press@RunDepth: 44.29 psig @ 4543.00 ft (KB)

Capacity: 8000.00 psig

Start Date: 2013.04.20

End Date: 2013.04.20

Last Calib.: 2013.04.20

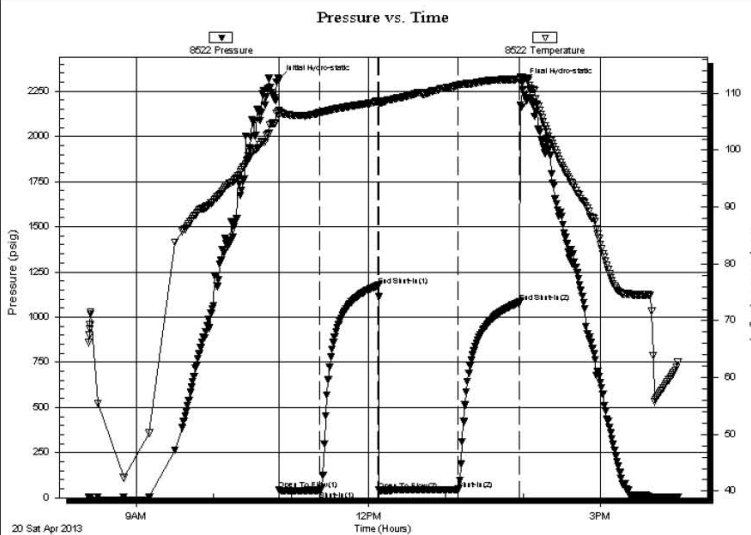
Start Time: 08:23:05

End Time: 15:59:59

Time On Btm: 2013.04.20 @ 10:50:30

Time Off Btm: 2013.04.20 @ 13:59:00

TEST COMMENT: IF: 1 1/2" blow.
IS: No return.
FF: Surface blow.
FSI: No return.



PRESSURE SUMMARY

Time (Min.)	Pressure (psig)	Temp (deg F)	Annotation
0	2314.37	106.93	Initial Hydro-static
1	43.75	106.14	Open To Flow (1)
32	40.97	106.69	Shut-In(1)
77	1174.47	108.64	End Shut-In(1)
78	41.84	108.32	Open To Flow (2)
139	44.29	111.40	Shut-In(2)
187	1082.99	112.49	End Shut-In(2)
189	2294.55	112.92	Final Hydro-static

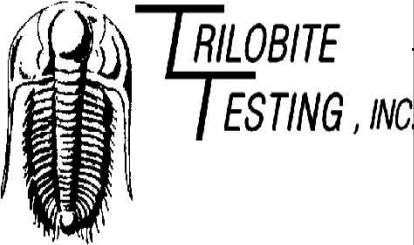
Recovery

Length (ft)	Description	Volume (bbl)
50.00	Mud 100m (oil spots)	0.35

Gas Rates

Choke (inches)	Pressure (psig)	Gas Rate (Mcf/d)

* Recovery from multiple tests



DRILL STEM TEST REPORT

Abercrombie Energy, LLC 17 20s 34w Scott Ks

10209 W. Central STE 2 K-2 Farms 1-17

Wichita, Ks 67212 Job Ticket: 49171 DST#: 4

ATTN: Keith Reavis Test Start: 2013.04.21 @ 01:32:00

GENERAL INFORMATION:

Formation: **Pawnee**

Deviated: No Whipstock: ft (KB) Test Type: Conventional Bottom Hole (Reset)

Time Tool Opened: 03:49:45 Tester: Bradley Walter

Time Test Ended: 08:38:30 Unit No: 53

Interval: 4578.00 ft (KB) To 4607.00 ft (KB) (TVD) Reference Elevations: 3118.00 ft (KB)

Total Depth: 4607.00 ft (KB) (TVD) 3109.00 ft (CF)

Hole Diameter: 7.88 inches Hole Condition: Good KB to GR/CF: 9.00 ft

Serial #: 8522 Outside

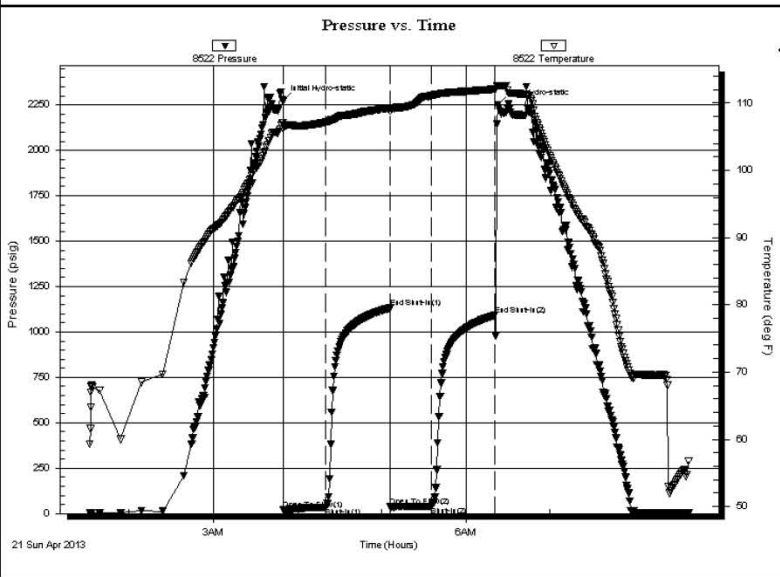
Press@RunDepth: 41.50 psig @ 4579.00 ft (KB) Capacity: 8000.00 psig

Start Date: 2013.04.21 End Date: 2013.04.21 Last Calib.: 2013.04.21

Start Time: 01:32:05 End Time: 08:38:29 Time On Btm: 2013.04.21 @ 03:49:30

Time Off Btm: 2013.04.21 @ 06:22:45

TEST COMMENT: IF: 1" blow .
 IS: No return.
 FF: No blow .
 FS: No return.




PRESSURE SUMMARY			
Time (Min.)	Pressure (psig)	Temp (deg F)	Annotation
0	2271.24	107.10	Initial Hydro-static
1	21.53	106.16	Open To Flow (1)
31	35.22	107.18	Shut-In(1)
77	1131.25	109.28	End Shut-In(1)
77	37.03	108.78	Open To Flow (2)
106	41.50	111.11	Shut-In(2)
151	1091.20	112.11	End Shut-In(2)
154	2249.40	112.62	Final Hydro-static

Recovery		
Length (ft)	Description	Volume (bbl)
45.00	Mud 100m (oil spots)	0.30

Gas Rates			
	Choke (inches)	Pressure (psig)	Gas Rate (Mcf/d)

* Recovery from multiple tests



DRILL STEM TEST REPORT

Abercrombie Energy, LLC

10209 W. Central STE2
Wichita, Ks 67212

ATTN: Keith Reavis

17 20s 34w Scott Ks

K-2 Farms 1-17

Job Ticket: 49172 **DST#: 5**

Test Start: 2013.04.21 @ 16:33:00

GENERAL INFORMATION:

Formation: **Ft Scott**

Deviated: No Whipstock: ft (KB)

Time Tool Opened: 18:48:45

Time Test Ended: 23:21:15

Test Type: Conventional Bottom Hole (Reset)

Tester: Bradley Walter

Unit No: 53

Interval: **4607.00 ft (KB) To 4630.00 ft (KB) (TVD)**

Reference Elevations: 3118.00 ft (KB)
3109.00 ft (CF)

Total Depth: 4630.00 ft (KB) (TVD)

Hole Diameter: 7.88 inches Hole Condition: Good

KB to GR/CF: 9.00 ft

Serial #: 8522 Outside

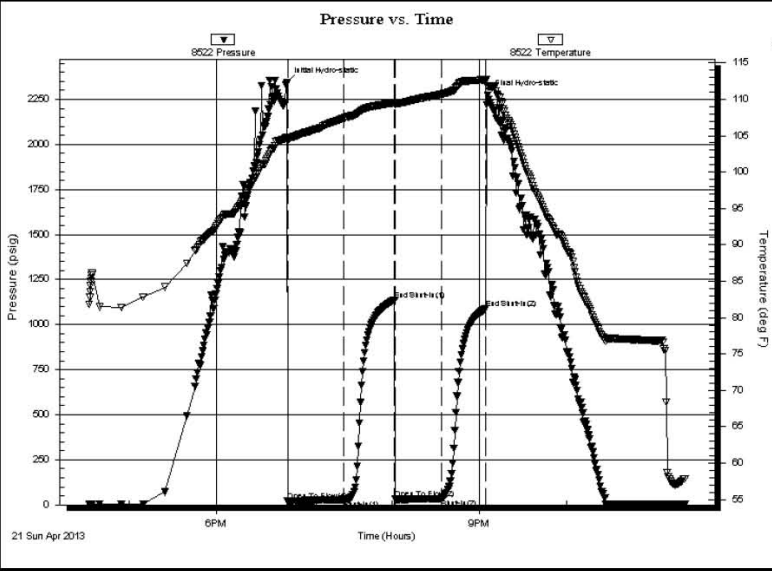
Press@RunDepth: 34.12 psig @ 4608.00 ft (KB) Capacity: 8000.00 psig

Start Date: 2013.04.21 End Date: 2013.04.21 Last Calib.: 2013.04.21

Start Time: 16:33:05 End Time: 23:21:14 Time On Btm: 2013.04.21 @ 18:48:30

Time Off Btm: 2013.04.21 @ 21:05:45

TEST COMMENT: IF: No blow , Flushed tool, Surge died.
 IS: No return.
 FF: No blow .
 FS: No return.



PRESSURE SUMMARY			
Time (Min.)	Pressure (psig)	Temp (deg F)	Annotation
0	2341.33	104.80	Initial Hydro-static
1	20.14	104.20	Open To Flow (1)
39	29.24	107.40	Shut-In(1)
74	1137.42	109.54	End Shut-In(1)
74	32.21	109.29	Open To Flow (2)
106	34.12	110.71	Shut-In(2)
136	1087.60	112.69	End Shut-In(2)
138	2274.70	111.75	Final Hydro-static

Recovery		
Length (ft)	Description	Volume (bbl)
20.00	w cm 30w 70m (oil spots)	0.10

Gas Rates			
	Choke (inches)	Pressure (psig)	Gas Rate (Mcf/d)

* Recovery from multiple tests