



## DRILL STEM TEST REPORT

Prepared For: **RJM Company**

PO Box 256  
Clafin, Kansas 67525+0256

ATTN: Kurt Talbot

### **Feist #1**

### **31/15S/12W/Russell**

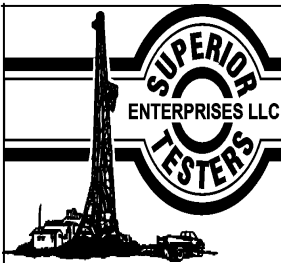
Start Date: 2013.04.13 @ 05:23:00

End Date: 2013.04.13 @ 09:38:30

Job Ticket #: 17482                      DST #: 2

Superior Testers Enterprises LLC  
PO Box 138 Great Bend KS 67530  
1-800-792-6902

Printed: 2013.04.13 @ 09:47:35



# DRILL STEM TEST REPORT

RJM Company  
 PO Box 256  
 Claflin, Kansas 67525+0256  
 ATTN: Kurt Talbot

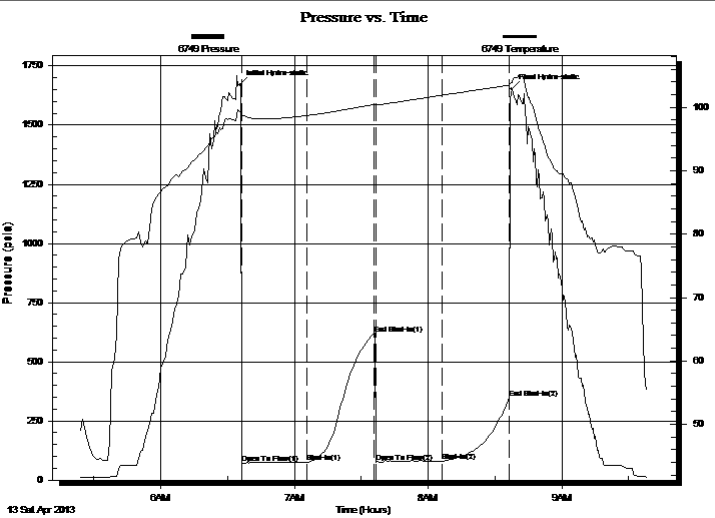
**31/15S/12W/Russell**  
**Feist #1**  
 Job Ticket: 17482      **DST#: 2**  
 Test Start: 2013.04.13 @ 05:23:00

## GENERAL INFORMATION:

Formation: **Lansing/Kansas City**  
 Deviated: No Whipstock:                                  ft (KB)  
 Time Tool Opened: 06:36:30  
 Time Test Ended: 09:38:30  
 Test Type: Conventional Bottom Hole (Initial)  
 Tester: Ken Swinney  
 Unit No: 3325 Great Bend/70  
 Interval: **3206.00 ft (KB) To 3300.00 ft (KB) (TVD)**  
 Reference Elevations: 1889.00 ft (KB)  
 Total Depth: 3300.00 ft (KB) (TVD) 1882.00 ft (CF)  
 Hole Diameter: 7.80 inches Hole Condition: Fair KB to GR/CF: 7.00 ft

**Serial #: 6749      Inside**  
 Press @ Run Depth: 79.36 psia @ 3296.14 ft (KB) Capacity: 5000.00 psia  
 Start Date: 2013.04.13 End Date: 2013.04.13 Last Calib.: 2013.04.13  
 Start Time: 05:23:00 End Time: 09:38:30 Time On Btm: 2013.04.13 @ 06:35:30  
 Time Off Btm: 2013.04.13 @ 08:37:30

**TEST COMMENT:** 1ST Open 30 Minutes/Weak blow/Blow built to 2 inches  
 1ST Shut In 30 Minutes/No blow back  
 2ND Open 30 Minutes/Weak surface blow/Blow died in 13 minutes  
 2ND Shut In 30 Minutes/No blow back



PRESSURE SUMMARY			
Time (Min.)	Pressure (psia)	Temp (deg F)	Annotation
0	1670.16	99.39	Initial Hydro-static
1	72.20	98.85	Open To Flow (1)
30	76.19	98.72	Shut-In(1)
60	616.26	100.44	End Shut-In(1)
61	76.67	100.36	Open To Flow (2)
91	79.36	101.91	Shut-In(2)
122	345.65	103.53	End Shut-In(2)
122	1652.66	103.97	Final Hydro-static

Recovery		
Length (ft)	Description	Volume (bbl)
15.00	Mud 100%	0.21

Gas Rates			
	Choke (inches)	Pressure (psia)	Gas Rate (Mcf/d)



# DRILL STEM TEST REPORT

RJM Company  
 PO Box 256  
 Claflin, Kansas 67525+0256  
 ATTN: Kurt Talbot

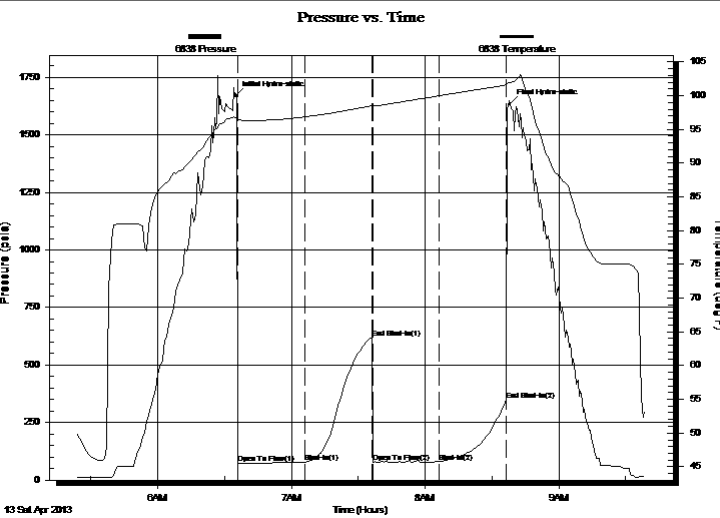
**31/15S/12W/Russell**  
**Feist #1**  
 Job Ticket: 17482      **DST#: 2**  
 Test Start: 2013.04.13 @ 05:23:00

## GENERAL INFORMATION:

Formation: **Lansing/Kansas City**  
 Deviated: No Whipstock:      ft (KB)  
 Time Tool Opened: 06:36:30  
 Time Test Ended: 09:38:30  
 Interval: **3206.00 ft (KB) To 3300.00 ft (KB) (TVD)**  
 Total Depth: 3300.00 ft (KB) (TVD)  
 Hole Diameter: 7.80 inches Hole Condition: Fair  
 Test Type: Conventional Bottom Hole (Initial)  
 Tester: Ken Swinney  
 Unit No: 3325 Great Bend/70  
 Reference Elevations: 1889.00 ft (KB)  
 1882.00 ft (CF)  
 KB to GR/CF: 7.00 ft

**Serial #: 6838      Outside**  
 Press @ RunDepth: 347.42 psia @ 3297.14 ft (KB)      Capacity: 5000.00 psia  
 Start Date: 2013.04.13      End Date: 2013.04.13      Last Calib.: 2013.04.13  
 Start Time: 05:23:00      End Time: 09:38:30      Time On Btm: 2013.04.13 @ 06:35:00  
 Time Off Btm: 2013.04.13 @ 08:38:00

**TEST COMMENT:** 1ST Open      30 Minutes/Weak blow /Blow built to 2 inches  
 1ST Shut In      30 Minutes/No blow back  
 2ND Open      30 Minutes/Weak surface blow /Blow died in 13 minutes  
 2ND Shut In      30 Minutes/No blow back



PRESSURE SUMMARY			
Time (Min.)	Pressure (psia)	Temp (deg F)	Annotation
0	1670.62	96.73	Initial Hydro-static
1	72.63	96.28	Open To Flow (1)
32	76.42	96.86	Shut-In(1)
62	618.89	98.48	End Shut-In(1)
62	77.14	98.45	Open To Flow (2)
91	79.90	99.98	Shut-In(2)
122	347.42	101.60	End Shut-In(2)
123	1634.63	101.96	Final Hydro-static

Recovery		
Length (ft)	Description	Volume (bbl)
15.00	Mud 100%	0.21

Gas Rates			
	Choke (inches)	Pressure (psia)	Gas Rate (Mcf/d)



# DRILL STEM TEST REPORT

**TOOL DIAGRAM**

RJM Company

**31/15S/12W/Russell**

PO Box 256  
Clafin, Kansas 67525+0256

**Feist #1**

Job Ticket: 17482

**DST#: 2**

ATTN: Kurt Talbot

Test Start: 2013.04.13 @ 05:23:00

## Tool Information

Drill Pipe:	Length: 3196.00 ft	Diameter: 3.80 inches	Volume: 44.83 bbl	Tool Weight: 2000.00 lb
Heavy Wt. Pipe:	Length: 0.00 ft	Diameter: 0.00 inches	Volume: 0.00 bbl	Weight set on Packer: 20000.00 lb
Drill Collar:	Length: 0.00 ft	Diameter: 0.00 inches	Volume: 0.00 bbl	Weight to Pull Loose: 40000.00 lb
			<u>Total Volume: 44.83 bbl</u>	Tool Chased 0.00 ft
Drill Pipe Above KB:	10.00 ft			String Weight: Initial 30000.00 lb
Depth to Top Packer:	3206.00 ft			Final 30000.00 lb
Depth to Bottom Packer:	ft			
Interval between Packers:	94.14 ft			
Tool Length:	114.14 ft			
Number of Packers:	2	Diameter: 6.75 inches		
Tool Comments:				

Tool Description	Length (ft)	Serial No.	Position	Depth (ft)	Accum. Lengths
------------------	-------------	------------	----------	------------	----------------

Shut In Tool	5.00			3191.00	
Hydraulic Tool	5.00			3196.00	
Packer	5.00			3201.00	20.00 Bottom Of Top Packer
Packer	5.00			3206.00	
Perforations	5.00			3211.00	
Change Over Sub	0.75			3211.75	
Drill Pipe	62.64			3274.39	
Change Over Sub	0.75			3275.14	
Anchor	20.00			3295.14	
Recorder	1.00	6749	Inside	3296.14	
Recorder	1.00	6838	Outside	3297.14	
Bullnose	3.00			3300.14	94.14 Bottom Packers & Anchor

**Total Tool Length: 114.14**



# DRILL STEM TEST REPORT

## FLUID SUMMARY

RJM Company  
PO Box 256  
Claflin, Kansas 67525+0256  
ATTN: Kurt Talbot

**31/15S/12W/Russell**  
**Feist #1**  
Job Ticket: 17482      **DST#: 2**  
Test Start: 2013.04.13 @ 05:23:00

### Mud and Cushion Information

Mud Type:	Gel Chem	Cushion Type:		Oil API:	deg API
Mud Weight:	9.00 lb/gal	Cushion Length:	ft	Water Salinity:	ppm
Viscosity:	56.00 sec/qt	Cushion Volume:	bbbl		
Water Loss:	7.99 in <sup>3</sup>	Gas Cushion Type:			
Resistivity:	ohm.m	Gas Cushion Pressure:	psia		
Salinity:	8000.00 ppm				
Filter Cake:	1.00 inches				

### Recovery Information

Recovery Table

Length ft	Description	Volume bbl
15.00	Mud 100%	0.210

Total Length: 15.00 ft      Total Volume: 0.210 bbl

Num Fluid Samples: 0

Num Gas Bombs: 0

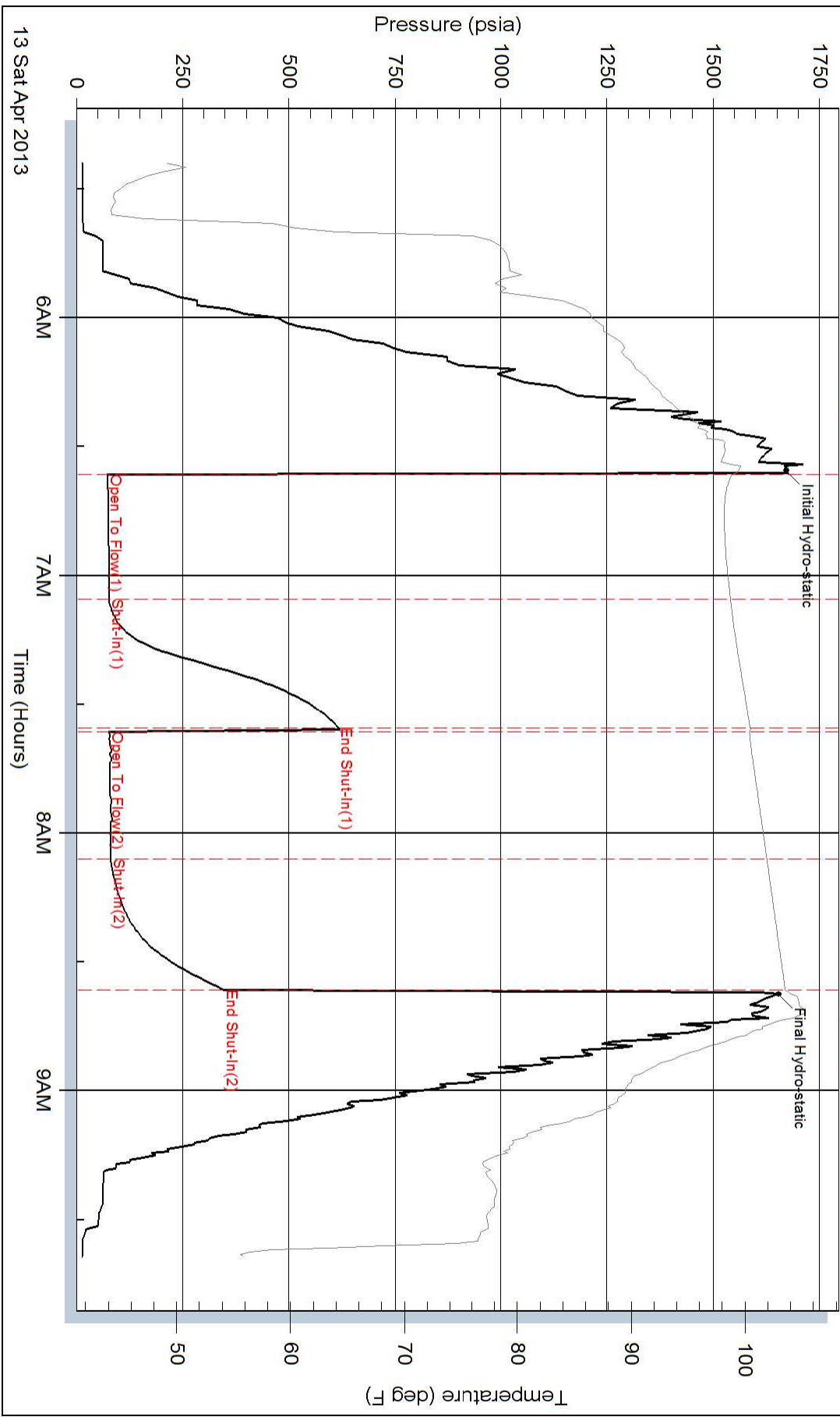
Serial #:

Laboratory Name:

Laboratory Location:

Recovery Comments:

### Pressure vs. Time



### Pressure vs. Time

