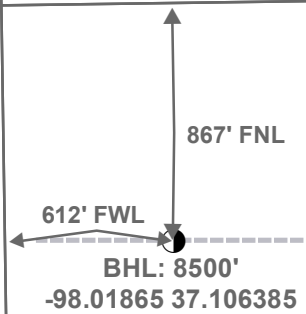


Section 1
34S 7W

Section 6
34S 6W



Bottom Perf: 8096'
-98.018599 37.105266

Harper County

Section 12
34S 7W

Section 7
34S 6W

Top Perf: 4819'
-98.018581 37.096457

Miss Entry: 4812'
-98.018613 37.096389

TURNER 3406 4-7H

TURNER 3406 3-7H

TURNER 3406 5-7H

Section 13
34S 7W

Section 18
34S 6W



Actual Bottom-Hole Location of Turner 3406 4-7H
T&R: 34S 6W
Section: 7, 612' FWL & 867' FNL
-98.01865 37.106385

1 in = 703 ft

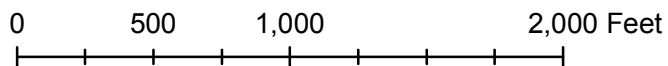


● Actual BH Location

* SandRidge Wells

--- Perf

□ Sections



Draftsman:

Aaron Birk

Draft Date: 7/2/2013

Drawing Name/Number:

Addendum_Turner 3406 4-7H.mxd

Coordinate System:

NAD 1927 State Plane
Kansas South FIPS: 1502