



**TRILOBITE
TESTING, INC.**

DRILL STEM TEST REPORT

Russell Oil, Inc.
P.O. Box 8050
Edmond, OK 73083
ATTN: Kitt Noah

22-18s.-11w.
Ames #6
Job Ticket: 49720 **DST#: 5**
Test Start: 2013.01.23 @ 00:27:43

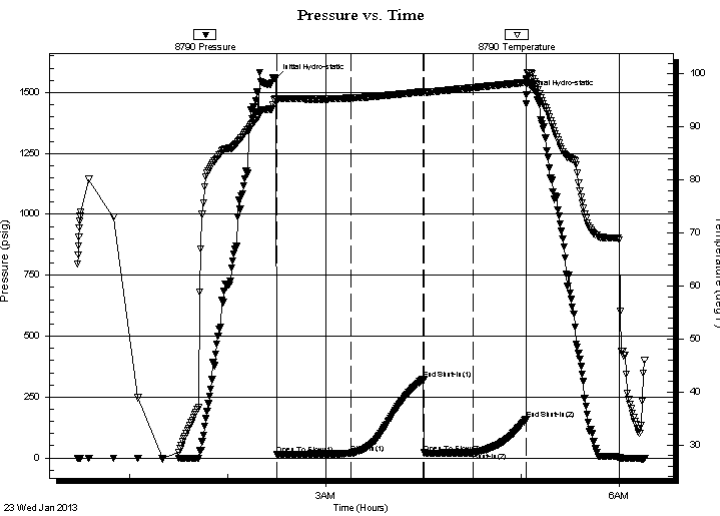
GENERAL INFORMATION:

Formation: **LKC "J"**
Deviated: No Whipstock: 0.00 ft (KB)
Time Tool Opened: 02:29:58
Time Test Ended: 06:15:58
Interval: **3196.00 ft (KB) To 3230.00 ft (KB) (TVD)**
Total Depth: 3230.00 ft (KB) (TVD)
Hole Diameter: 7.88 inches Hole Condition: Fair
Test Type: Conventional Bottom Hole (Reset)
Tester: Ryan Reynolds
Unit No: 63
Reference Elevations: 1786.00 ft (KB)
1776.00 ft (CF)
KB to GR/CF: 10.00 ft

Serial #: 8790

Press @ Run Depth: 21.76 psig @ ft (KB) Capacity: 8000.00 psig
Start Date: 2013.01.23 End Date: 2013.01.23 Last Calib.: 2013.01.23
Start Time: 00:27:48 End Time: 06:15:57 Time On Btm: 2013.01.23 @ 02:29:28
Time Off Btm: 2013.01.23 @ 05:03:13

TEST COMMENT: IF: Weak blow . 1/4" - 1" - Dead @ 32min.
IS: No blow
FF: No blow
FS: No blow



PRESSURE SUMMARY

Time (Min.)	Pressure (psig)	Temp (deg F)	Annotation
0	1558.73	95.44	Initial Hydro-static
1	14.15	95.11	Open To Flow (1)
46	18.46	95.45	Shut-In(1)
91	324.24	96.62	End Shut-In(1)
91	20.93	96.53	Open To Flow (2)
121	21.76	97.41	Shut-In(2)
154	157.61	98.42	End Shut-In(2)
154	1491.09	98.98	Final Hydro-static

Recovery

Length (ft)	Description	Volume (bbl)
10.00	Drig Mud 100% mud	0.14

* Recovery from multiple tests

Gas Rates

Choke (inches)	Pressure (psig)	Gas Rate (Mcf/d)



**TRILOBITE
TESTING, INC.**

DRILL STEM TEST REPORT

FLUID SUMMARY

Russell Oil, Inc.

22-18s.-11w.

P.O. Box 8050
Edmond, OK 73083

Ames #6

Job Ticket: 49720

DST#: 5

ATTN: Kitt Noah

Test Start: 2013.01.23 @ 00:27:43

Mud and Cushion Information

Mud Type: Gel Chem

Cushion Type:

Oil API:

deg API

Mud Weight: 9.00 lb/gal

Cushion Length:

ft

Water Salinity:

13200 ppm

Viscosity: 62.00 sec/qt

Cushion Volume:

bbbl

Water Loss: 11.19 in³

Gas Cushion Type:

Resistivity: ohm.m

Gas Cushion Pressure:

psig

Salinity: 13200.00 ppm

Filter Cake: 0.02 inches

Recovery Information

Recovery Table

Length ft	Description	Volume bbbl
10.00	Drig Mud 100% mud	0.140

Total Length: 10.00 ft Total Volume: 0.140 bbl

Num Fluid Samples: 0

Num Gas Bombs: 0

Serial #: none

Laboratory Name:

Laboratory Location:

Recovery Comments:

