



DRILL STEM TEST REPORT

Prepared For: **Forestar Petroleum Corp**

1801 Broadway #900
Denver, CO 80202

ATTN: Charlie Sturdavant

Medford Farms #1-15

15-10s-35w Thomas,KS

Start Date: 2013.02.16 @ 05:00:42

End Date: 2013.02.16 @ 13:20:51

Job Ticket #: 50039 DST #: 1

Trilobite Testing, Inc

PO Box 362 Hays, KS 67601

ph: 785-625-4778 fax: 785-625-5620

Printed: 2013.02.27 @ 13:48:13



TRILOBITE TESTING, INC.

DRILL STEM TEST REPORT

Forestar Petroleum Corp

15-10s-35w Thomas,KS

1801 Broadway #900
Denver, CO 80202

Medford Farms #1-15

ATTN: Charlie Sturdavant

Job Ticket: 50039

DST#: 1

Test Start: 2013.02.16 @ 05:00:42

GENERAL INFORMATION:

Formation: **A-F**

Deviated: No Whipstock: 0.00 ft (KB)

Time Tool Opened: 07:12:52

Time Test Ended: 13:20:51

Test Type: Conventional Bottom Hole (Initial)

Tester: Shane McBride

Unit No: 55

Interval: 4210.00 ft (KB) To 4295.00 ft (KB) (TVD)

Reference Elevations: 3318.00 ft (KB)

Total Depth: 4295.00 ft (KB) (TVD)

3313.00 ft (CF)

Hole Diameter: 7.88 inches Hole Condition: Fair

KB to GR/CF: 5.00 ft

Serial #: 8368 Outside

Press @ Run Depth: 147.55 psig @ 4211.00 ft (KB)

Capacity: 8000.00 psig

Start Date: 2013.02.16

End Date: 2013.02.16

Last Calib.: 2013.02.16

Start Time: 05:00:42

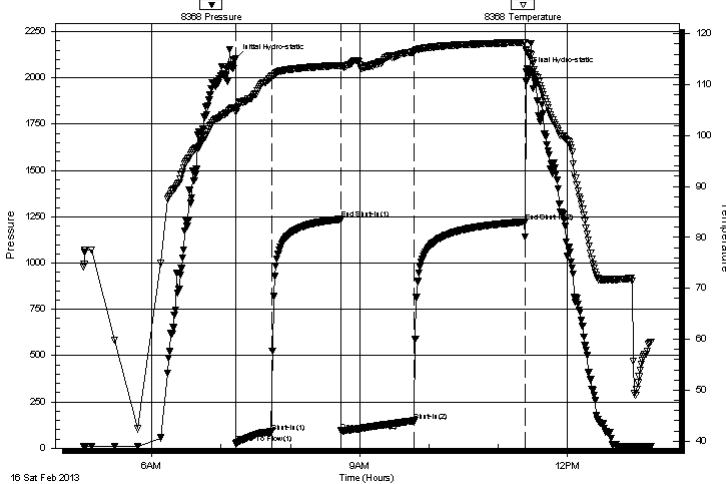
End Time: 13:12:51

Time On Btm: 2013.02.16 @ 07:12:22

Time Off Btm: 2013.02.16 @ 11:24:37

TEST COMMENT: 4 1/2" blow
No return
8 1/2" blow
No return

Pressure vs. Time



PRESSURE SUMMARY

Time (Min.)	Pressure (psig)	Temp (deg F)	Annotation
0	2104.57	105.53	Initial Hydro-static
1	26.82	104.62	Open To Flow (1)
32	88.17	111.54	Shut-In(1)
92	1236.48	113.80	End Shut-In(1)
92	92.86	113.53	Open To Flow (2)
155	147.55	116.53	Shut-In(2)
251	1222.01	118.30	End Shut-In(2)
253	2032.54	116.64	Final Hydro-static

Recovery

Length (ft)	Description	Volume (bbl)
186.00	m c w 30% m 70% w	1.48
77.00	w c m 35% w 65% m	1.08
0.00	6" in free oil on top	0.00

Gas Rates

Choke (inches)	Pressure (psig)	Gas Rate (Mcf/d)



**TRILOBITE
TESTING, INC.**

DRILL STEM TEST REPORT

TOOL DIAGRAM

Forestar Petroleum Corp

15-10s-35w Thomas,KS

1801 Broadway #900
Denver, CO 80202

Medford Farms #1-15

Job Ticket: 50039

DST#: 1

ATTN: Charlie Sturdavant

Test Start: 2013.02.16 @ 05:00:42

Tool Information

Drill Pipe:	Length: 4068.00 ft	Diameter: 3.80 inches	Volume: 57.06 bbl	Tool Weight: 2500.00 lb
Heavy Wt. Pipe:	Length: 0.00 ft	Diameter: 0.00 inches	Volume: 0.00 bbl	Weight set on Packer: 25000.00 lb
Drill Collar:	Length: 124.00 ft	Diameter: 2.25 inches	Volume: 0.61 bbl	Weight to Pull Loose: 75000.00 lb
			<u>Total Volume: 57.67 bbl</u>	Tool Chased 0.00 ft
Drill Pipe Above KB:	9.00 ft			String Weight: Initial 52000.00 lb
Depth to Top Packer:	4210.00 ft			Final 55000.00 lb
Depth to Bottom Packer:	ft			
Interval between Packers:	85.00 ft			
Tool Length:	112.00 ft			
Number of Packers:	2	Diameter: 6.75 inches		

Tool Comments:

Tool Description

Length (ft) Serial No. Position Depth (ft) Accum. Lengths

Tool Description	Length (ft)	Serial No.	Position	Depth (ft)	Accum. Lengths
Change Over Sub	1.00			4184.00	
Shut In Tool	5.00			4189.00	
Hydraulic tool	5.00			4194.00	
Jars	5.00			4199.00	
Safety Joint	2.00			4201.00	
Packer	5.00			4206.00	27.00 Bottom Of Top Packer
Packer	4.00			4210.00	
Stubb	1.00			4211.00	
Recorder	0.00	6667	Inside	4211.00	
Recorder	0.00	8368	Outside	4211.00	
Perforations	14.00			4225.00	
Change Over Sub	1.00			4226.00	
Drill Pipe	63.00			4289.00	
Change Over Sub	1.00			4290.00	
Bullnose	5.00			4295.00	85.00 Bottom Packers & Anchor

Total Tool Length: 112.00



**TRILOBITE
TESTING, INC.**

DRILL STEM TEST REPORT

FLUID SUMMARY

Forestar Petroleum Corp

15-10s-35w Thomas,KS

1801 Broadway #900
Denver, CO 80202

Medford Farms #1-15

Job Ticket: 50039

DST#: 1

ATTN: Charlie Sturdavant

Test Start: 2013.02.16 @ 05:00:42

Mud and Cushion Information

Mud Type: Gel Chem

Cushion Type:

Oil API:

0 deg API

Mud Weight: 9.00 lb/gal

Cushion Length:

ft

Water Salinity:

25500 ppm

Viscosity: 63.00 sec/qt

Cushion Volume:

bbbl

Water Loss: 6.37 in³

Gas Cushion Type:

Resistivity: 0.00 ohm.m

Gas Cushion Pressure:

psig

Salinity: 5000.00 ppm

Filter Cake: 1.00 inches

Recovery Information

Recovery Table

Length ft	Description	Volume bbl
186.00	m c w 30% m 70% w	1.480
77.00	w c m 35% w 65% m	1.080
0.00	6" in free oil on top	0.000

Total Length: 263.00 ft Total Volume: 2.560 bbl

Num Fluid Samples: 0

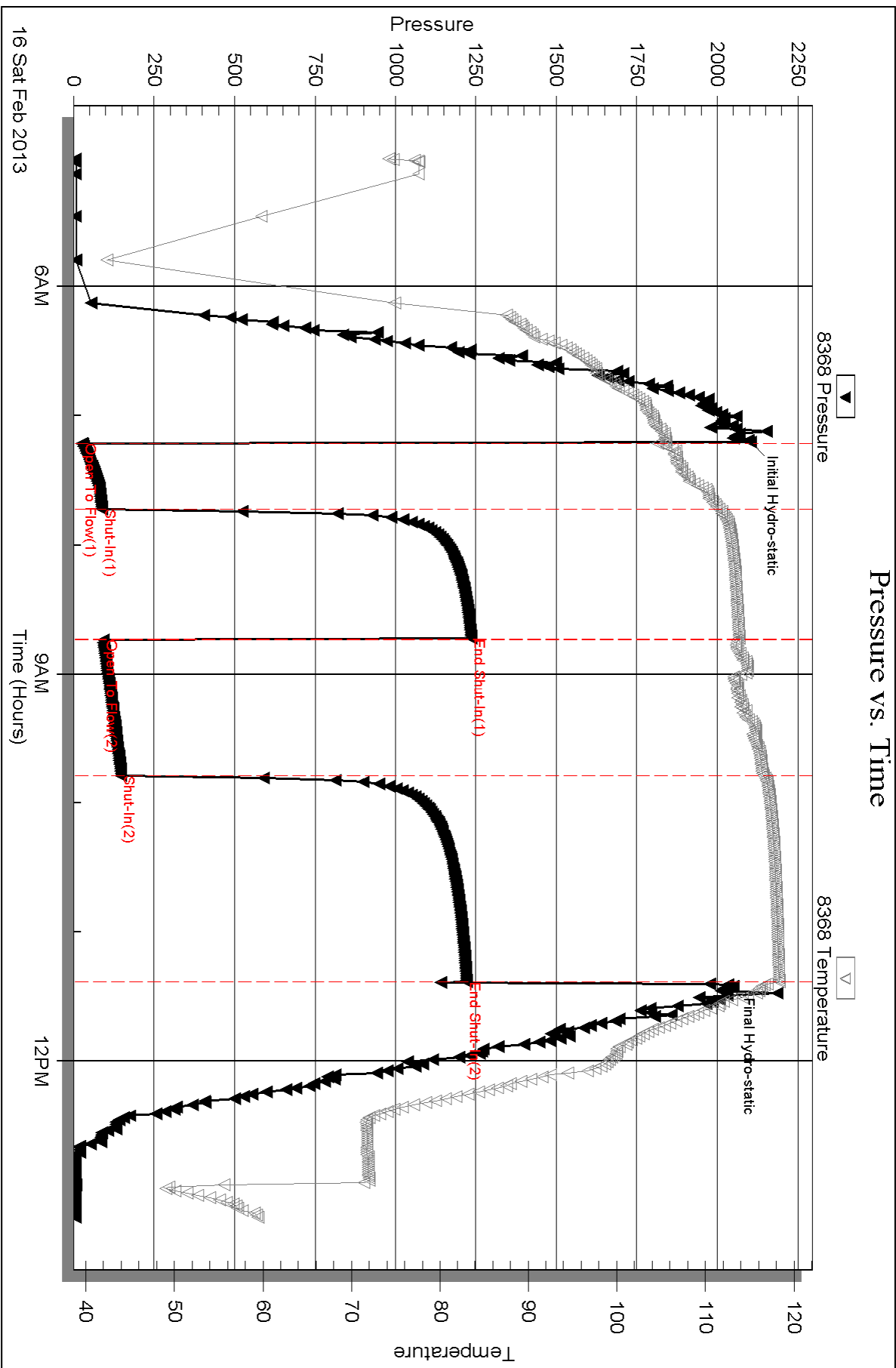
Num Gas Bombs: 0

Serial #:

Laboratory Name:

Laboratory Location:

Recovery Comments: rw .341 @ 57°f = 25,500 chlor



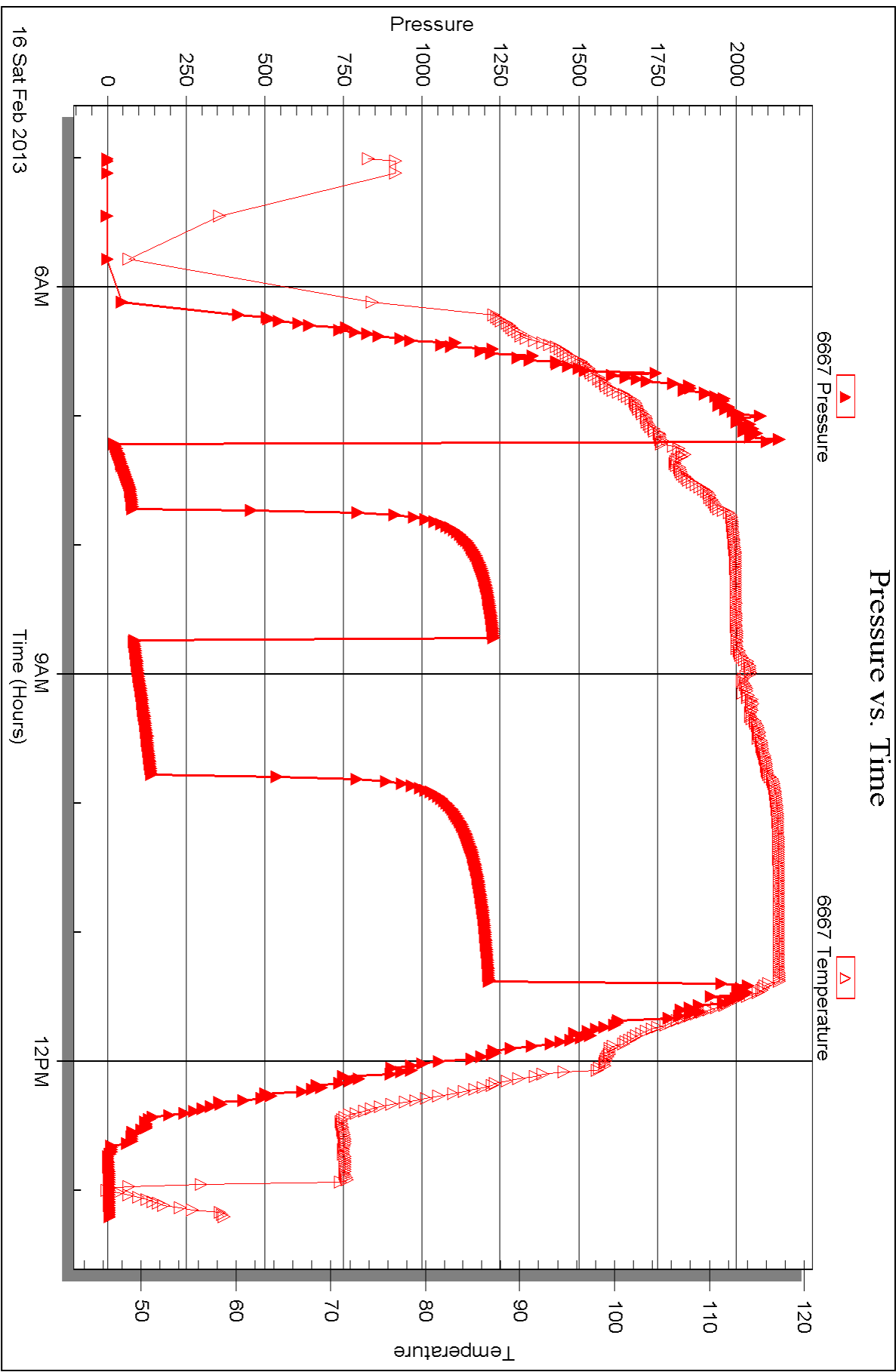
Serial #: 6667

Inside

Forestar Petroleum Corp

Medford Farms #1 - 15

DST Test Number: 1





DRILL STEM TEST REPORT

Prepared For: **Forestar Petroleum Corp**

1801 Broadway #900
Denver, CO 80202

ATTN: Charlie Sturdavant

Medford Farms #1-15

15-10s-35w Thomas,KS

Start Date: 2013.02.17 @ 09:30:20

End Date: 2013.02.17 @ 15:15:05

Job Ticket #: 50040 DST #: 2

Trilobite Testing, Inc

PO Box 362 Hays, KS 67601

ph: 785-625-4778 fax: 785-625-5620

Printed: 2013.02.27 @ 13:46:40



TRILOBITE TESTING, INC.

DRILL STEM TEST REPORT

Forestar Petroleum Corp

15-10s-35w Thomas,KS

1801 Broadway #900
Denver, CO 80202

Medford Farms #1-15

ATTN: Charlie Sturdavant

Job Ticket: 50040

DST#: 2

Test Start: 2013.02.17 @ 09:30:20

GENERAL INFORMATION:

Formation: **H-K**

Deviated: No Whipstock: 0.00 ft (KB)

Time Tool Opened: 11:09:20

Time Test Ended: 15:15:05

Test Type: Conventional Bottom Hole (Reset)

Tester: Shane McBride

Unit No: 55

Interval: 4334.00 ft (KB) To 4460.00 ft (KB) (TVD)

Reference Elevations: 3318.00 ft (KB)

Total Depth: 4460.00 ft (KB) (TVD)

3313.00 ft (CF)

Hole Diameter: 7.88 inches Hole Condition: Fair

KB to GR/CF: 5.00 ft

Serial #: 6667

Inside

Press @ Run Depth: 44.53 psig @ 4335.00 ft (KB)

Capacity: 8000.00 psig

Start Date: 2013.02.17

End Date:

2013.02.17

Last Calib.:

2013.02.17

Start Time: 09:30:20

End Time:

15:15:05

Time On Btm:

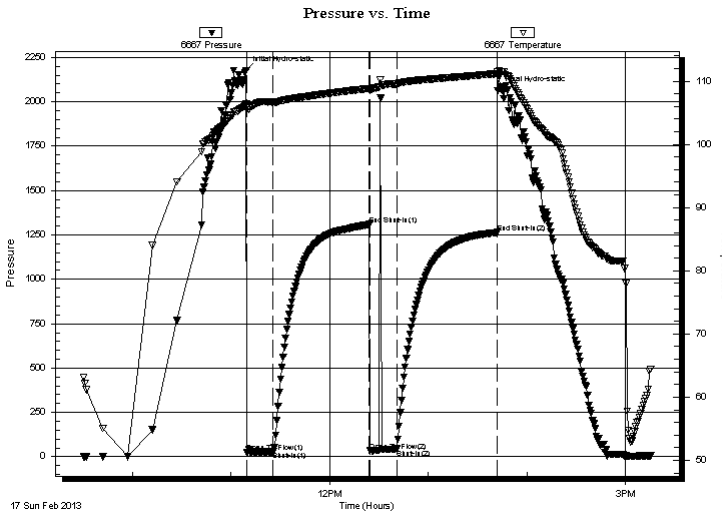
2013.02.17 @ 11:09:05

Time Off Btm:

2013.02.17 @ 13:42:05

TEST COMMENT: 1/4" blow died back to weak surface blow
No return
No blow flush tool, good surge died in 13 min
No return

PRESSURE SUMMARY



Time (Min.)	Pressure (psig)	Temp (deg F)	Annotation
0	2174.56	106.44	Initial Hydro-static
1	25.75	105.81	Open To Flow (1)
17	28.79	106.63	Shut-In(1)
75	1309.24	108.86	End Shut-In(1)
76	32.78	108.61	Open To Flow (2)
92	44.53	109.55	Shut-In(2)
153	1263.89	111.20	End Shut-In(2)
153	2063.98	111.43	Final Hydro-static

Recovery

Length (ft)	Description	Volume (bbl)
10.00	mud 100% m	0.05

Gas Rates

	Choke (inches)	Pressure (psig)	Gas Rate (Mcf/d)

* Recovery from multiple tests



**TRILOBITE
TESTING, INC.**

DRILL STEM TEST REPORT

TOOL DIAGRAM

Forestar Petroleum Corp

15-10s-35w Thomas,KS

1801 Broadway #900
Denver, CO 80202

Medford Farms #1-15

Job Ticket: 50040

DST#: 2

ATTN: Charlie Sturdavant

Test Start: 2013.02.17 @ 09:30:20

Tool Information

Drill Pipe:	Length: 4194.00 ft	Diameter: 3.80 inches	Volume: 58.83 bbl	Tool Weight: 2500.00 lb
Heavy Wt. Pipe:	Length: 0.00 ft	Diameter: 0.00 inches	Volume: 0.00 bbl	Weight set on Packer: 25000.00 lb
Drill Collar:	Length: 124.00 ft	Diameter: 2.25 inches	Volume: 0.61 bbl	Weight to Pull Loose: 75000.00 lb
			<u>Total Volume: 59.44 bbl</u>	Tool Chased 0.00 ft
Drill Pipe Above KB:	11.00 ft			String Weight: Initial 53000.00 lb
Depth to Top Packer:	4334.00 ft			Final 53000.00 lb
Depth to Bottom Packer:	ft			
Interval between Packers:	126.00 ft			
Tool Length:	153.00 ft			
Number of Packers:	2	Diameter: 6.75 inches		

Tool Comments:

Tool Description

Length (ft) Serial No. Position Depth (ft) Accum. Lengths

Tool Description	Length (ft)	Serial No.	Position	Depth (ft)	Accum. Lengths
Change Over Sub	1.00			4308.00	
Shut In Tool	5.00			4313.00	
Hydraulic tool	5.00			4318.00	
Jars	5.00			4323.00	
Safety Joint	2.00			4325.00	
Packer	5.00			4330.00	27.00 Bottom Of Top Packer
Packer	4.00			4334.00	
Stubb	1.00			4335.00	
Recorder	0.00	6667	Inside	4335.00	
Recorder	0.00	8368	Outside	4335.00	
Perforations	24.00			4359.00	
Change Over Sub	1.00			4360.00	
Drill Pipe	94.00			4454.00	
Change Over Sub	1.00			4455.00	
Bullnose	5.00			4460.00	126.00 Bottom Packers & Anchor

Total Tool Length: 153.00



**TRILOBITE
TESTING, INC.**

DRILL STEM TEST REPORT

FLUID SUMMARY

Forestar Petroleum Corp

15-10s-35w Thomas,KS

1801 Broadway #900
Denver, CO 80202

Medford Farms #1-15

Job Ticket: 50040

DST#: 2

ATTN: Charlie Sturdavant

Test Start: 2013.02.17 @ 09:30:20

Mud and Cushion Information

Mud Type: Gel Chem

Cushion Type:

Oil API:

0 deg API

Mud Weight: 9.00 lb/gal

Cushion Length:

ft

Water Salinity:

0 ppm

Viscosity: 59.00 sec/qt

Cushion Volume:

bbbl

Water Loss: 6.37 in³

Gas Cushion Type:

Resistivity: 0.00 ohm.m

Gas Cushion Pressure:

psig

Salinity: 5200.00 ppm

Filter Cake: 1.00 inches

Recovery Information

Recovery Table

Length ft	Description	Volume bbl
10.00	mud 100%m	0.049

Total Length: 10.00 ft Total Volume: 0.049 bbl

Num Fluid Samples: 0

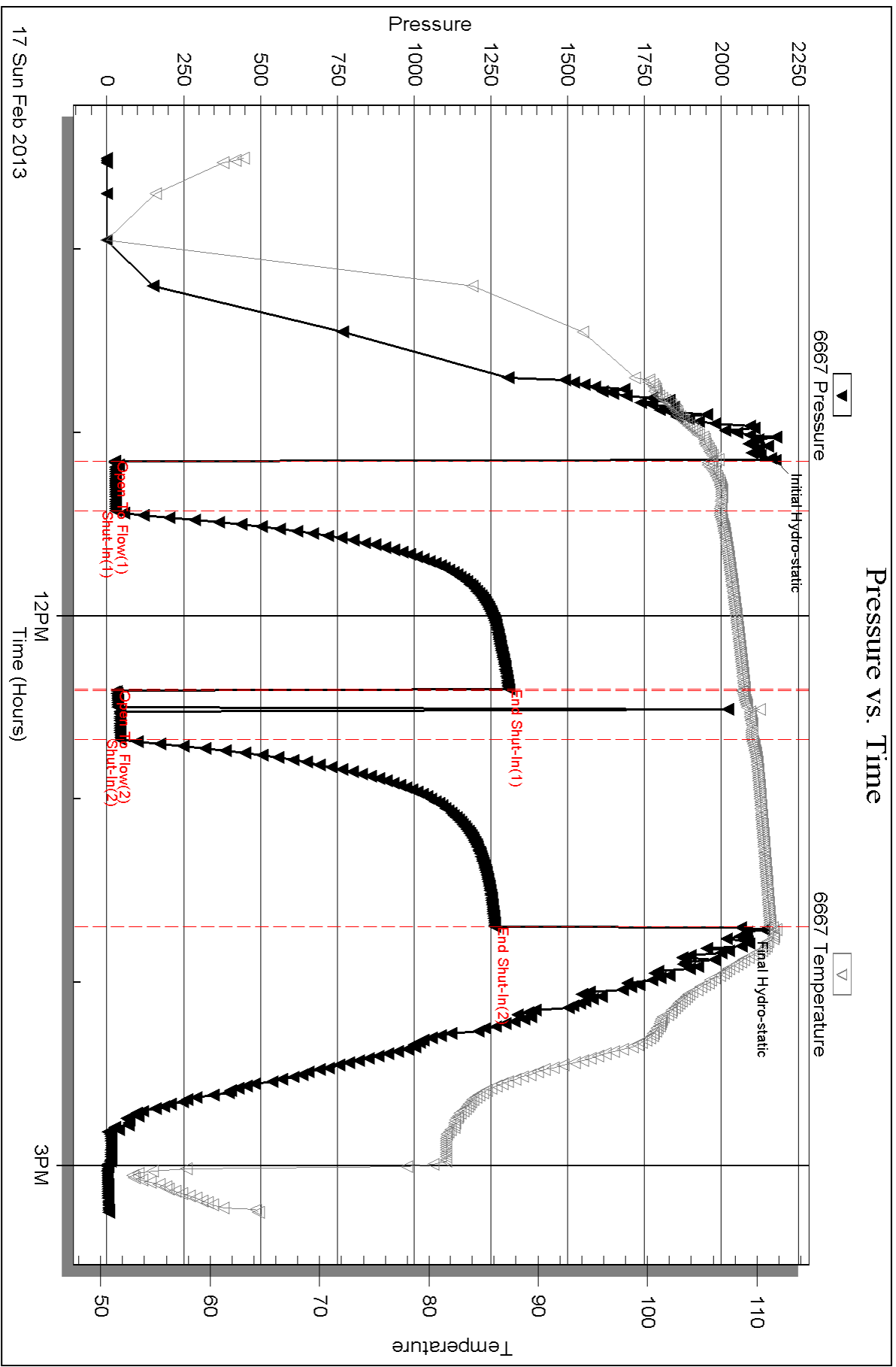
Num Gas Bombs: 0

Serial #:

Laboratory Name:

Laboratory Location:

Recovery Comments:

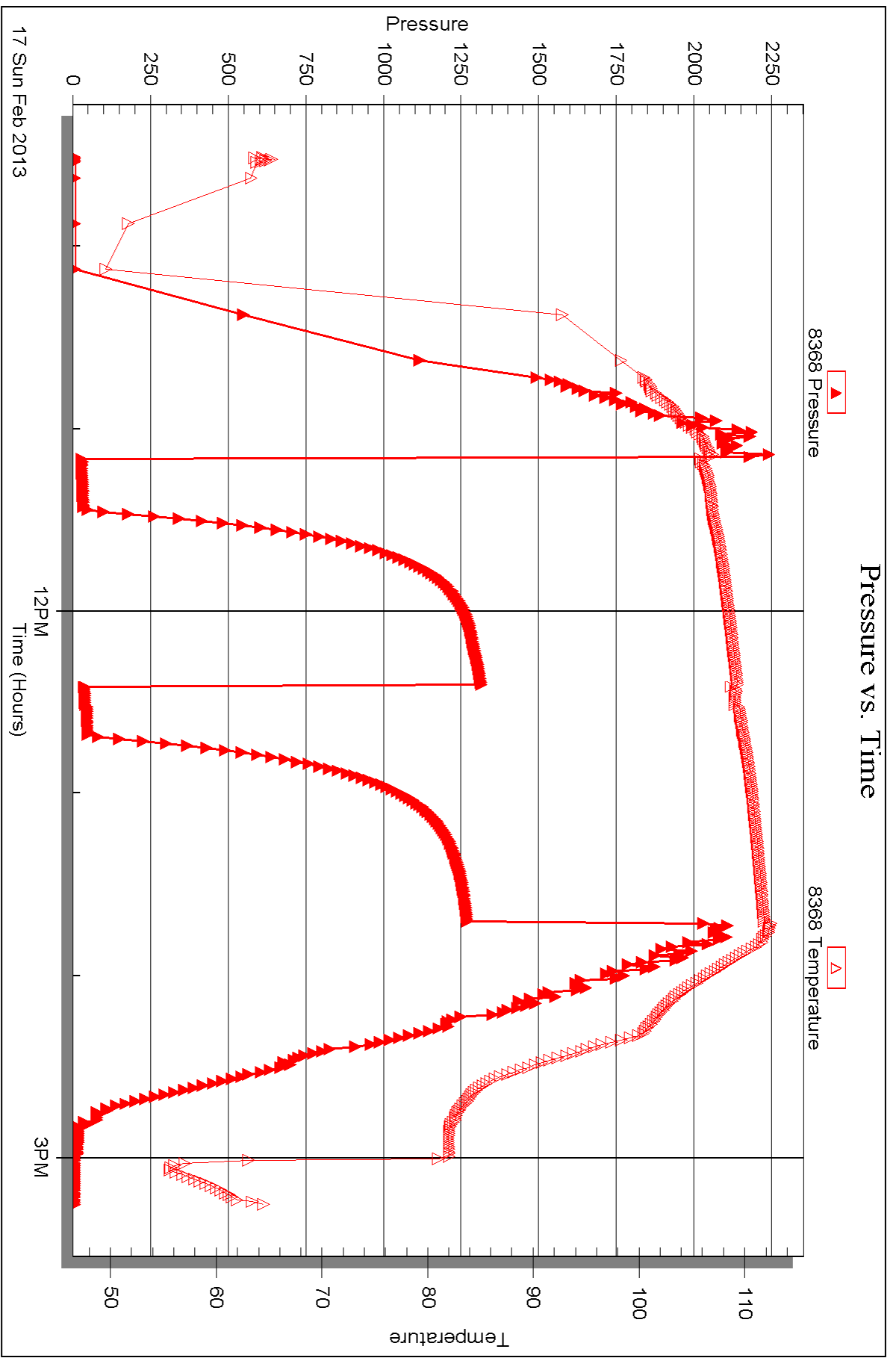


Serial #: 8368

Outside Forestar Petroleum Corp

Medford Farms #1 - 15

DST Test Number: 2



Triobite Testing, Inc

Ref. No: 50040

Printed: 2013.02.27 @ 13:46:43



DRILL STEM TEST REPORT

Prepared For: **Forestar Petroleum Corp**

1801 Broadway #900
Denver, CO 80202

ATTN: Charlie Sturdavant

Medford Farms #1-15

15-10s-35w Thomas,KS

Start Date: 2013.02.18 @ 16:25:26

End Date: 2013.02.18 @ 23:00:20

Job Ticket #: 50041 DST #: 3

Trilobite Testing, Inc

PO Box 362 Hays, KS 67601

ph: 785-625-4778 fax: 785-625-5620

Printed: 2013.02.27 @ 13:45:18



**TRILOBITE
TESTING, INC.**

DRILL STEM TEST REPORT

Forestar Petroleum Corp

15-10s-35w Thomas,KS

1801 Broadway #900
Denver, CO 80202

Medford Farms #1-15

ATTN: Charlie Sturdavant

Job Ticket: 50041

DST#: 3

Test Start: 2013.02.18 @ 16:25:26

GENERAL INFORMATION:

Formation: **Marm - Ft Scott**

Deviated: No Whipstock: 0.00 ft (KB)

Time Tool Opened: 18:11:36

Time Test Ended: 23:00:20

Test Type: Conventional Bottom Hole (Reset)

Tester: Shane McBride

Unit No: 55

Interval: 4456.00 ft (KB) To 4670.00 ft (KB) (TVD)

Reference Elevations: 3318.00 ft (KB)

Total Depth: 4670.00 ft (KB) (TVD)

3313.00 ft (CF)

Hole Diameter: 7.88 inches Hole Condition: Fair

KB to GR/CF: 5.00 ft

Serial #: 8368 Outside

Press @ RunDepth: 1363.91 psig @ 4457.00 ft (KB)

Capacity: 8000.00 psig

Start Date: 2013.02.18

End Date: 2013.02.18

Last Calib.: 2013.02.18

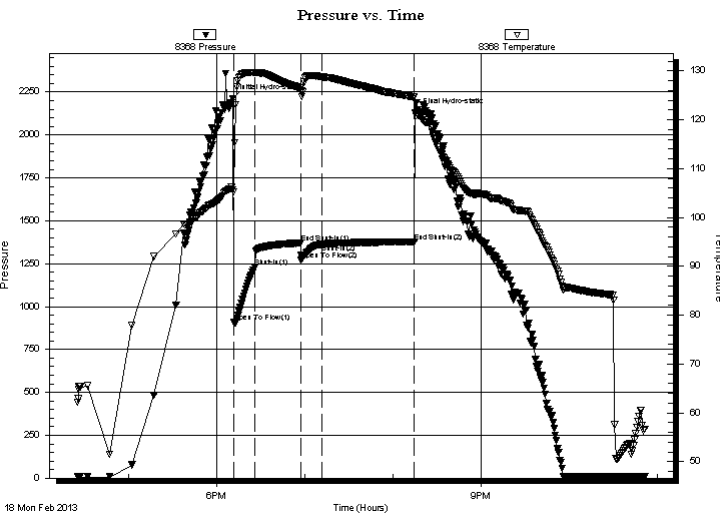
Start Time: 16:25:26

End Time: 22:51:20

Time On Btm: 2013.02.18 @ 18:11:06

Time Off Btm: 2013.02.18 @ 20:15:21

TEST COMMENT: B.O.B. in 1 min.
No return
B.O.B. in 1 1/2 min.
No return



PRESSURE SUMMARY

Time (Min.)	Pressure (psig)	Temp (deg F)	Annotation
0	2210.18	105.65	Initial Hydro-static
1	909.94	105.31	Open To Flow (1)
15	1231.32	129.60	Shut-In(1)
46	1370.40	126.47	End Shut-In(1)
47	1272.74	125.97	Open To Flow (2)
61	1363.91	128.76	Shut-In(2)
124	1375.65	124.61	End Shut-In(2)
125	2128.91	121.36	Final Hydro-static

Recovery

Length (ft)	Description	Volume (bbl)
186.00	water 100%w under circ sub	1.48
2421.00	water reversed out 100%w	33.96
124.00	s m c w 5% m 95% w	1.74
217.00	w c m 45% w 55% m	3.04

* Recovery from multiple tests

Gas Rates

Choke (inches)	Pressure (psig)	Gas Rate (Mcf/d)



**TRILOBITE
TESTING, INC.**

DRILL STEM TEST REPORT

TOOL DIAGRAM

Forestar Petroleum Corp

15-10s-35w Thomas,KS

1801 Broadway #900
Denver, CO 80202

Medford Farms #1-15

Job Ticket: 50041

DST#: 3

ATTN: Charlie Sturdavant

Test Start: 2013.02.18 @ 16:25:26

Tool Information

Drill Pipe:	Length: 4321.00 ft	Diameter: 3.80 inches	Volume: 60.61 bbl	Tool Weight: 2500.00 lb
Heavy Wt. Pipe:	Length: 0.00 ft	Diameter: 0.00 inches	Volume: 0.00 bbl	Weight set on Packer: 25000.00 lb
Drill Collar:	Length: 124.00 ft	Diameter: 2.25 inches	Volume: 0.61 bbl	Weight to Pull Loose: 85000.00 lb
			<u>Total Volume: 61.22 bbl</u>	Tool Chased 0.00 ft
Drill Pipe Above KB:	16.00 ft			String Weight: Initial 60000.00 lb
Depth to Top Packer:	4456.00 ft			Final 70000.00 lb
Depth to Bottom Packer:	ft			
Interval between Packers:	114.00 ft			
Tool Length:	141.00 ft			
Number of Packers:	2	Diameter: 6.75 inches		

Tool Comments:

Tool Description

Length (ft) Serial No. Position Depth (ft) Accum. Lengths

Tool Description	Length (ft)	Serial No.	Position	Depth (ft)	Accum. Lengths
Change Over Sub	1.00			4430.00	
Shut In Tool	5.00			4435.00	
Hydraulic tool	5.00			4440.00	
Jars	5.00			4445.00	
Safety Joint	2.00			4447.00	
Packer	5.00			4452.00	27.00 Bottom Of Top Packer
Packer	4.00			4456.00	
Stubb	1.00			4457.00	
Recorder	0.00	6667	Inside	4457.00	
Recorder	0.00	8368	Outside	4457.00	
Perforations	16.00			4473.00	
Change Over Sub	1.00			4474.00	
Drill Pipe	90.00			4564.00	
Change Over Sub	1.00			4565.00	
Bullnose	5.00			4570.00	114.00 Bottom Packers & Anchor

Total Tool Length: 141.00



**TRILOBITE
TESTING, INC.**

DRILL STEM TEST REPORT

FLUID SUMMARY

Forestar Petroleum Corp

15-10s-35w Thomas,KS

1801 Broadway #900
Denver, CO 80202

Medford Farms #1-15

Job Ticket: 50041

DST#: 3

ATTN: Charlie Sturdavant

Test Start: 2013.02.18 @ 16:25:26

Mud and Cushion Information

Mud Type: Gel Chem

Cushion Type:

Oil API:

0 deg API

Mud Weight: 9.00 lb/gal

Cushion Length:

ft

Water Salinity:

27500 ppm

Viscosity: 52.00 sec/qt

Cushion Volume:

bbbl

Water Loss: 7.97 in³

Gas Cushion Type:

Resistivity: 0.00 ohm.m

Gas Cushion Pressure:

psig

Salinity: 9000.00 ppm

Filter Cake: 1.00 inches

Recovery Information

Recovery Table

Length ft	Description	Volume bbbl
186.00	water 100%w under circ sub	1.480
2421.00	water reversed out 100%w	33.960
124.00	s m c w 5%m 95%w	1.739
217.00	w c m 45%w 55%m	3.044

Total Length: 2948.00 ft Total Volume: 40.223 bbl

Num Fluid Samples: 0

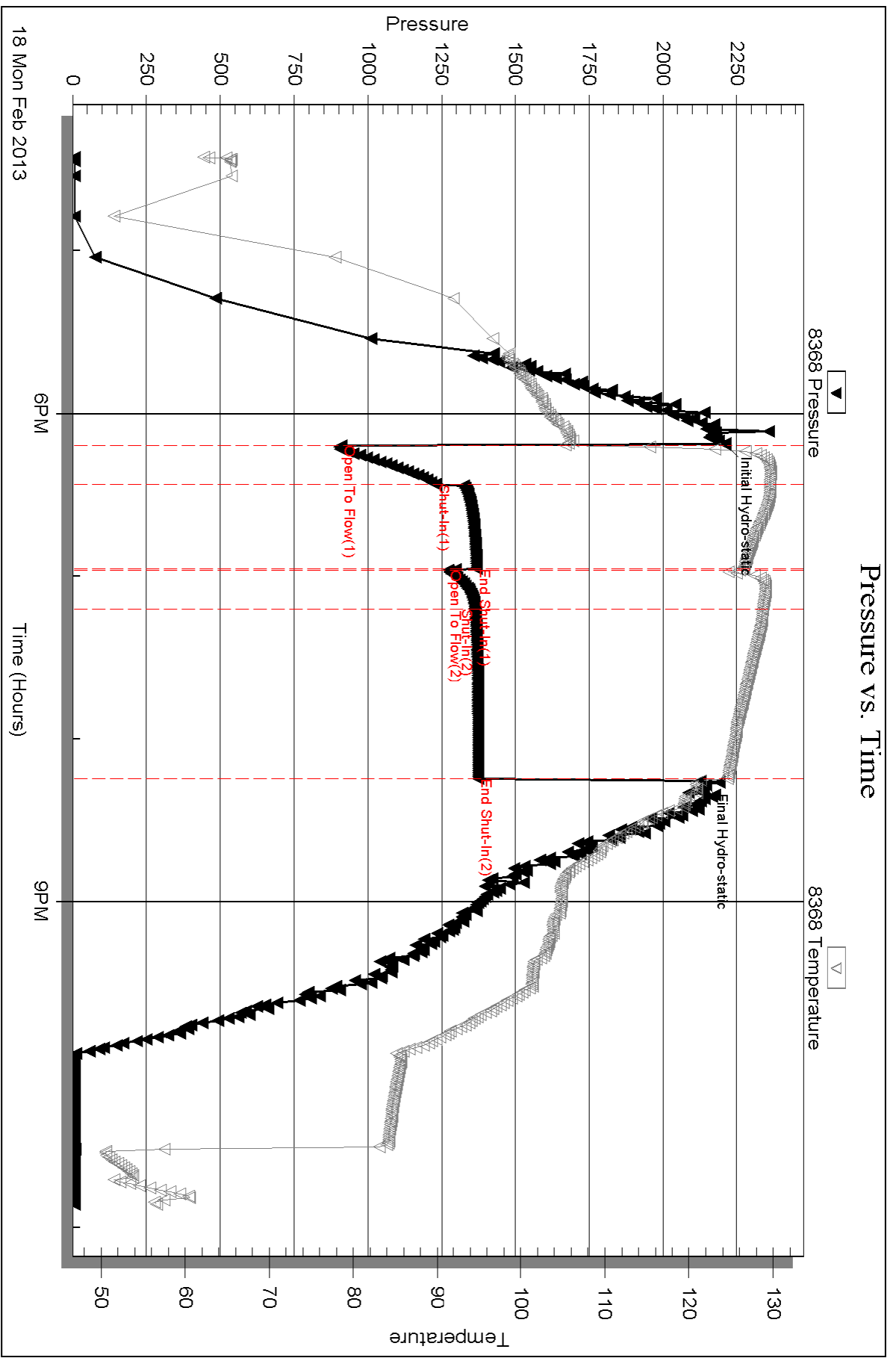
Num Gas Bombs: 0

Serial #:

Laboratory Name:

Laboratory Location:

Recovery Comments: rw .351 @ 52*f =27,500 chlor



Serial #: 6667

Inside

Forestar Petroleum Corp

Medford Farms #1 - 15

DST Test Number: 3





DRILL STEM TEST REPORT

Prepared For: **Forestar Petroleum Corp**

1801 Broadway #900
Denver, CO 80202

ATTN: Charlie Sturdavant

Medford Farms #1-15

15-10s-35w Thomas,KS

Start Date: 2013.02.19 @ 16:05:40

End Date: 2013.02.19 @ 23:03:40

Job Ticket #: 50042 DST #: 4

Trilobite Testing, Inc

PO Box 362 Hays, KS 67601

ph: 785-625-4778 fax: 785-625-5620

Printed: 2013.02.27 @ 13:44:29



TRILOBITE TESTING, INC.

DRILL STEM TEST REPORT

Forestar Petroleum Corp

15-10s-35w Thomas,KS

1801 Broadway #900
Denver, CO 80202

Medford Farms #1-15

ATTN: Charlie Sturdavant

Job Ticket: 50042

DST#: 4

Test Start: 2013.02.19 @ 16:05:40

GENERAL INFORMATION:

Formation: **Cherokee-Johnson**

Deviated: No Whipstock: 0.00 ft (KB)

Time Tool Opened: 18:24:10

Time Test Ended: 23:03:40

Test Type: Conventional Bottom Hole (Reset)

Tester: Shane McBride

Unit No: 55

Interval: 4668.00 ft (KB) To 4792.00 ft (KB) (TVD)

Reference Elevations: 3318.00 ft (KB)

Total Depth: 4792.00 ft (KB) (TVD)

3313.00 ft (CF)

Hole Diameter: 7.88 inches Hole Condition: Fair

KB to GR/CF: 5.00 ft

Serial #: 6667 Inside

Press @RunDepth: 43.77 psig @ 4669.00 ft (KB)

Capacity: 8000.00 psig

Start Date: 2013.02.19

End Date: 2013.02.19

Last Calib.: 2013.02.19

Start Time: 16:05:40

End Time: 23:03:40

Time On Btm: 2013.02.19 @ 18:23:55

Time Off Btm: 2013.02.19 @ 20:57:55

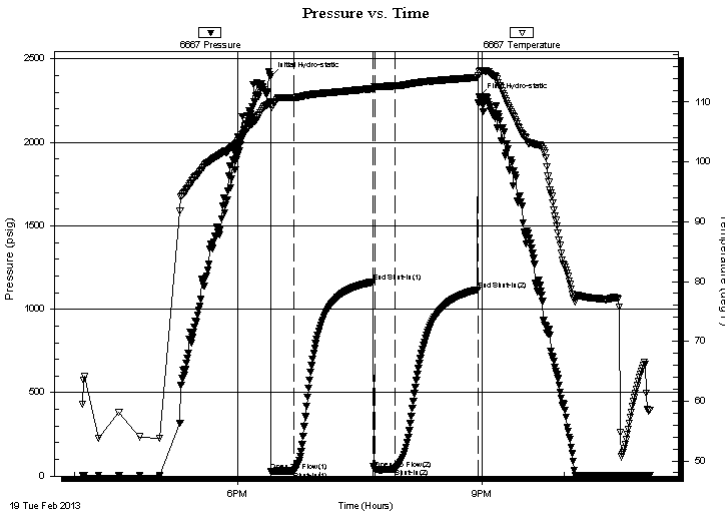
TEST COMMENT: 1/4" blow died in 14 min

No return

No blow

No return

PRESSURE SUMMARY



Time (Min.)	Pressure (psig)	Temp (deg F)	Annotation
0	2395.29	110.04	Initial Hydro-static
1	26.78	109.35	Open To Flow (1)
18	31.65	110.77	Shut-In(1)
76	1164.43	112.24	End Shut-In(1)
77	40.61	112.59	Open To Flow (2)
92	43.77	112.71	Shut-In(2)
153	1117.82	114.12	End Shut-In(2)
154	2271.53	115.11	Final Hydro-static

Recovery

Length (ft)	Description	Volume (bbl)
1.00	free oil 100%o	0.00
10.00	s o c m 3%o 97%m	0.05

Gas Rates

	Choke (inches)	Pressure (psig)	Gas Rate (Mcf/d)

* Recovery from multiple tests



**TRILOBITE
TESTING, INC.**

DRILL STEM TEST REPORT

TOOL DIAGRAM

Forestar Petroleum Corp

15-10s-35w Thomas,KS

1801 Broadway #900
Denver, CO 80202

Medford Farms #1-15

Job Ticket: 50042

DST#: 4

ATTN: Charlie Sturdavant

Test Start: 2013.02.19 @ 16:05:40

Tool Information

Drill Pipe:	Length: 4543.00 ft	Diameter: 3.80 inches	Volume: 63.73 bbl	Tool Weight: 2500.00 lb
Heavy Wt. Pipe:	Length: 0.00 ft	Diameter: 0.00 inches	Volume: 0.00 bbl	Weight set on Packer: 25000.00 lb
Drill Collar:	Length: 124.00 ft	Diameter: 2.25 inches	Volume: 0.61 bbl	Weight to Pull Loose: 75000.00 lb
			<u>Total Volume: 64.34 bbl</u>	Tool Chased 0.00 ft
Drill Pipe Above KB:	26.00 ft			String Weight: Initial 60000.00 lb
Depth to Top Packer:	4668.00 ft			Final 60000.00 lb
Depth to Bottom Packer:	ft			
Interval between Packers:	124.00 ft			
Tool Length:	151.00 ft			
Number of Packers:	2	Diameter: 6.75 inches		

Tool Comments:

Tool Description

Length (ft) Serial No. Position Depth (ft) Accum. Lengths

Tool Description	Length (ft)	Serial No.	Position	Depth (ft)	Accum. Lengths
Change Over Sub	1.00			4642.00	
Shut In Tool	5.00			4647.00	
Hydraulic tool	5.00			4652.00	
Jars	5.00			4657.00	
Safety Joint	2.00			4659.00	
Packer	5.00			4664.00	27.00 Bottom Of Top Packer
Packer	4.00			4668.00	
Stubb	1.00			4669.00	
Recorder	0.00	6667	Inside	4669.00	
Recorder	0.00	8368	Outside	4669.00	
Perforations	21.00			4690.00	
Change Over Sub	1.00			4691.00	
Drill Pipe	95.00			4786.00	
Change Over Sub	1.00			4787.00	
Bullnose	5.00			4792.00	124.00 Bottom Packers & Anchor

Total Tool Length: 151.00



**TRILOBITE
TESTING, INC.**

DRILL STEM TEST REPORT

FLUID SUMMARY

Forestar Petroleum Corp

15-10s-35w Thomas,KS

1801 Broadway #900
Denver, CO 80202

Medford Farms #1-15

Job Ticket: 50042

DST#: 4

ATTN: Charlie Sturdavant

Test Start: 2013.02.19 @ 16:05:40

Mud and Cushion Information

Mud Type: Gel Chem

Cushion Type:

Oil API:

0 deg API

Mud Weight: 9.00 lb/gal

Cushion Length:

ft

Water Salinity:

0 ppm

Viscosity: 54.00 sec/qt

Cushion Volume:

bbbl

Water Loss: 7.98 in³

Gas Cushion Type:

Resistivity: 0.00 ohm.m

Gas Cushion Pressure:

psig

Salinity: 52000.00 ppm

Filter Cake: 1.00 inches

Recovery Information

Recovery Table

Length ft	Description	Volume bbl
1.00	free oil 100%o	0.005
10.00	s o c m 3%o 97%m	0.049

Total Length: 11.00 ft Total Volume: 0.054 bbl

Num Fluid Samples: 0

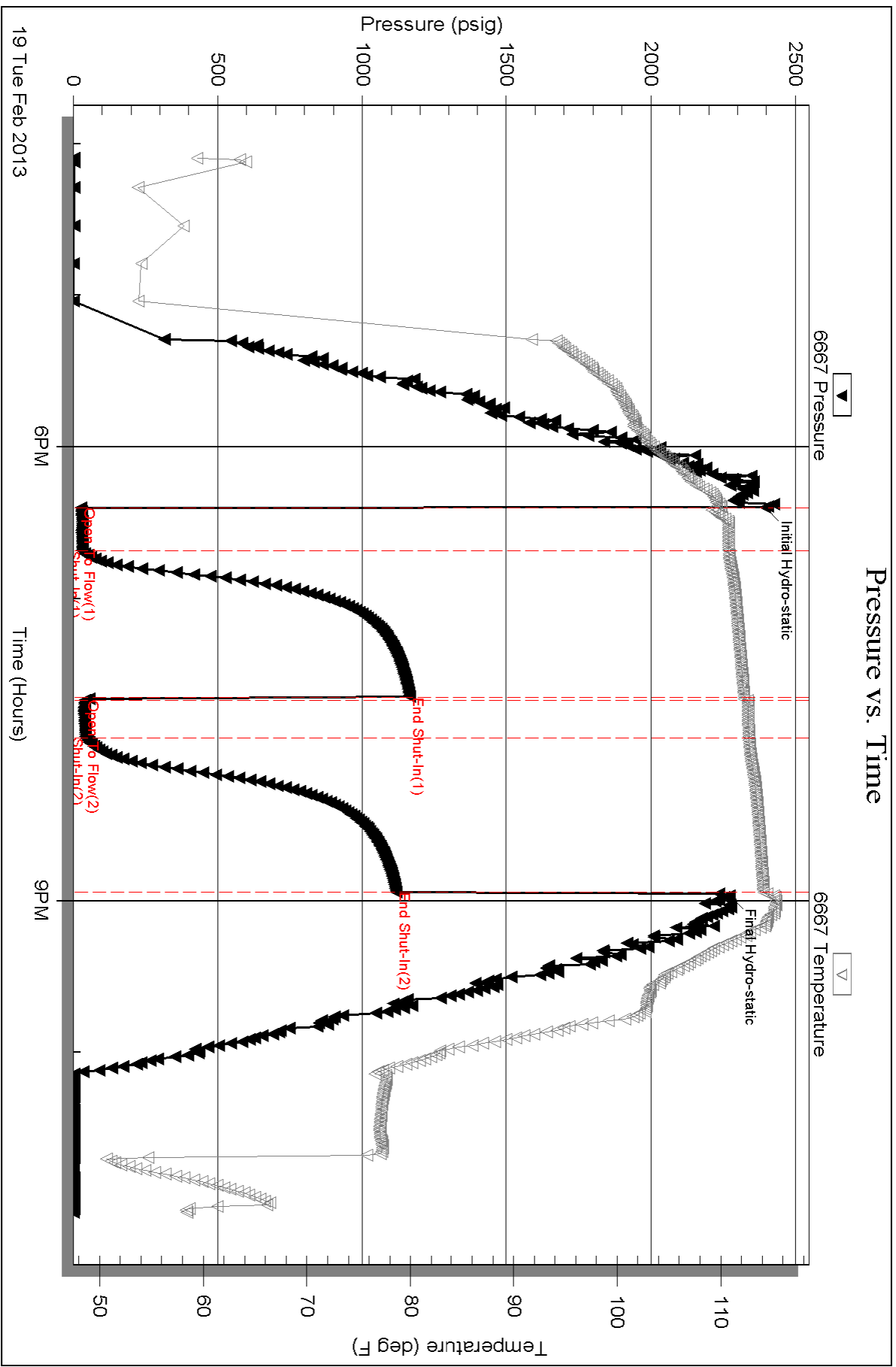
Num Gas Bombs: 0

Serial #:

Laboratory Name:

Laboratory Location:

Recovery Comments:

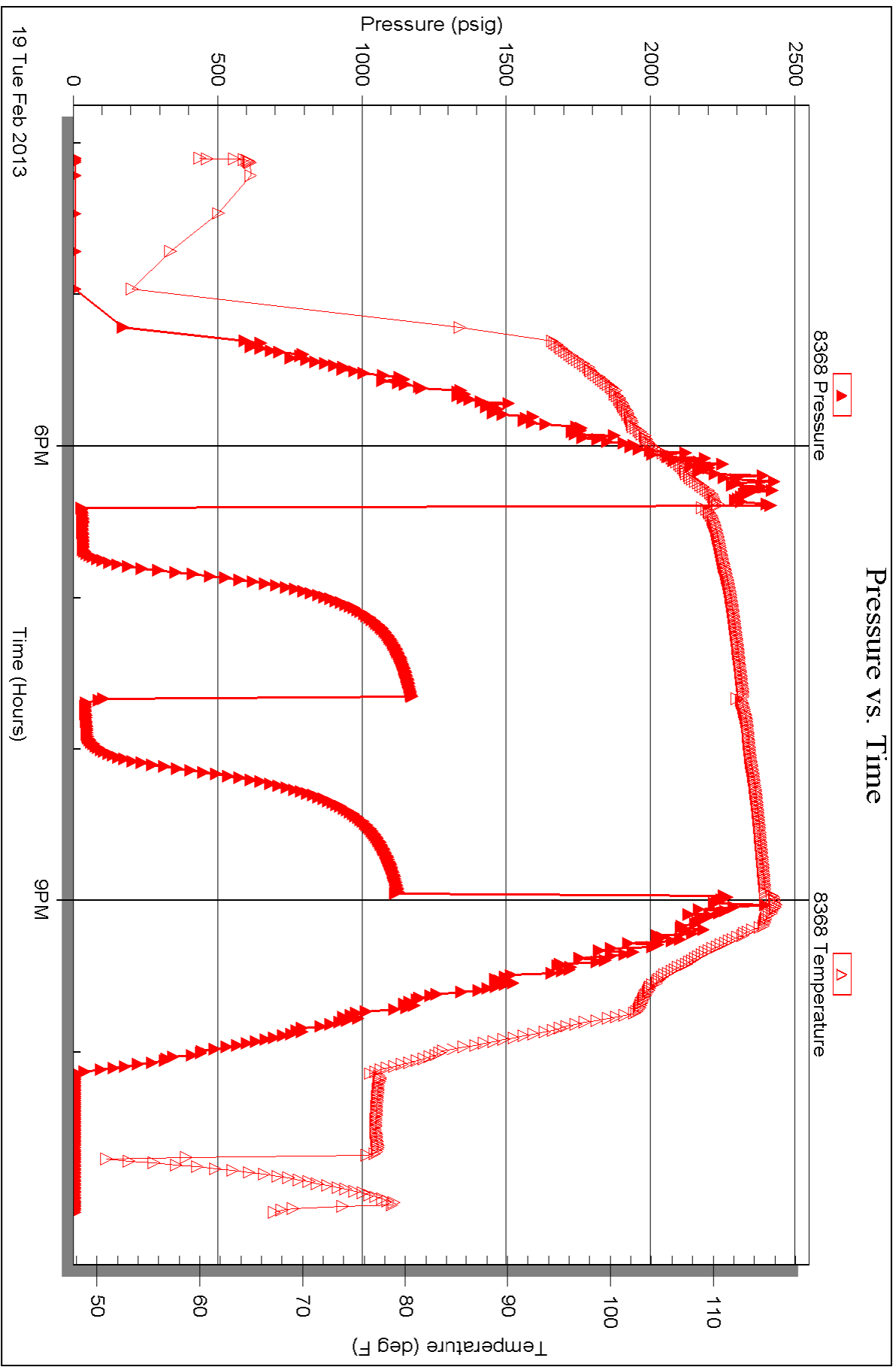


Serial #: 8368

Outside Forestar Petroleum Corp

Medford Farms #1 - 15

DST Test Number: 4





TRILOBITE TESTING INC.

1515 Commerce Parkway • Hays, Kansas 67601

Test Ticket

NO. 50039

Well Name & No. Medford Farms #1-15 Test No. #1 Date 2/16/13
 Company Forstar Petroleum Corp Elevation 3318 KB 3313 GL
 Address 1801 Broadway #901 Denver, Colo 80202
 Co. Rep / Geo. Charlie Sturdavant Rig WW #8
 Location: Sec. 15 Twp. 10S Rge. 35W Co. Thomas State Ks

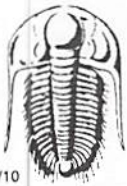
Interval Tested 4210 4295 Zone Tested A-F
 Anchor Length 85 Drill Pipe Run 4068' Mud Wt. 9.1
 Top Packer Depth 4205 Drill Collars Run 124' Vis 63
 Bottom Packer Depth 4210 Wt. Pipe Run --- WL 6.4
 Total Depth 4295 Chlorides 5000 ppm System LCM #1
 Blow Description 4 1/2" in blow
No return
8 1/2" in blow
No return

Rec	Feet of	%gas	%oil	%water	%mud
<u>77'</u>	<u>WCM</u>			<u>35%</u>	<u>65%</u>
<u>186'</u>	<u>MCM</u>			<u>70%</u>	<u>30%</u>
	<u>6" in free Oil on Top</u>				

Rec Total 263' BHT 118° Gravity --- API RW .341 @ 57° F Chlorides 25,500 ppm

(A) Initial Hydrostatic <u>2104</u>	<input checked="" type="checkbox"/> Test 1250	T-On Location <u>03:00</u>
(B) First Initial Flow <u>26</u>	<input checked="" type="checkbox"/> Jars 250	T-Started <u>05:00</u>
(C) First Final Flow <u>88</u>	<input checked="" type="checkbox"/> Safety Joint 75	T-Open <u>07:13</u>
(D) Initial Shut-In <u>1236</u>	<input checked="" type="checkbox"/> Circ Sub <u>N/C</u>	T-Pulled <u>11:13</u>
(E) Second Initial Flow <u>92</u>	<input type="checkbox"/> Hourly Standby	T-Out <u>13:20</u>
(F) Second Final Flow <u>147</u>	<input checked="" type="checkbox"/> Mileage <u>140 RT</u> 217	Comments
(G) Final Shut-In <u>1222</u>	<input type="checkbox"/> Sampler	
(H) Final Hydrostatic <u>2032</u>	<input type="checkbox"/> Straddle	<input type="checkbox"/> Ruined Shale Packer
	<input type="checkbox"/> Shale Packer	<input type="checkbox"/> Ruined Packer
Initial Open <u>30</u>	<input type="checkbox"/> Extra Packer	<input type="checkbox"/> Extra Copies
Initial Shut-In <u>60</u>	<input type="checkbox"/> Extra Recorder	Sub Total <u>0</u>
Final Flow <u>60</u>	<input type="checkbox"/> Day Standby	Total <u>1792</u>
Final Shut-In <u>90</u>	<input type="checkbox"/> Accessibility	MP/DST Disc't
	Sub Total <u>1792</u>	

Approved By Charlie Sturdavant Our Representative [Signature]
 Trilobite Testing Inc. shall not be liable for damaged of any kind of the property or personnel of the one for whom a test is made, or for any loss suffered or sustained directly or indirectly through the use of its equipment, or its statements or opinion concerning the results of any test, tools lost or damaged in the hole shall be paid for at cost by the party for whom the test is made.



TRILOBITE TESTING INC.

1515 Commerce Parkway • Hays, Kansas 67601

Test Ticket

NO. 50040

4/10

Well Name & No. Medford Farms # 1-15 Test No. # 2 Date 2/17/13
 Company For Star Petroleum Corp Elevation 3318 KB 3313 GL
 Address 1801 Broadway # 900 Denver, Colo 80202
 Co. Rep / Geo. Charlie Sturdavant Rig WW # 8
 Location: Sec. _____ Twp. _____ Rge. _____ Co. _____ State _____

Interval Tested 4334 4460 Zone Tested H-K
 Anchor Length _____ 126 Drill Pipe Run 4194' Mud Wt. 9.2
 Top Packer Depth _____ 4329 Drill Collars Run 124' Vis 59
 Bottom Packer Depth _____ 4334 Wt. Pipe Run _____ WL 6.4
 Total Depth _____ 4460 Chlorides 5200 ppm System LCM #1

Blow Description 14" blow died back to weak surface blow
No return
No blow, Flush tool, Good Surge, died in 13 min.
No return

Rec	Feet of	%gas	%oil	%water	%mud
<u>10'</u>	<u>mud</u>			<u>100%</u>	
Rec _____	Feet of _____	%gas _____	%oil _____	%water _____	%mud _____
Rec _____	Feet of _____	%gas _____	%oil _____	%water _____	%mud _____
Rec _____	Feet of _____	%gas _____	%oil _____	%water _____	%mud _____
Rec _____	Feet of _____	%gas _____	%oil _____	%water _____	%mud _____

Rec Total 10' BHT 111° Gravity _____ API RW _____ @ _____ °F Chlorides _____ ppm

(A) Initial Hydrostatic <u>2174</u>	<input checked="" type="checkbox"/> Test <u>1250</u>	T-On Location <u>07:00</u>
(B) First Initial Flow <u>25</u>	<input checked="" type="checkbox"/> Jars <u>250</u>	T-Started <u>09:30</u>
(C) First Final Flow <u>28</u>	<input checked="" type="checkbox"/> Safety Joint <u>75</u>	T-Open <u>11:06</u>
(D) Initial Shut-In <u>1309</u>	<input checked="" type="checkbox"/> Circ Sub <u>N/C</u>	T-Pulled <u>13:36</u>
(E) Second Initial Flow <u>32</u>	<input checked="" type="checkbox"/> Hourly Standby <u>2hrs</u>	T-Out <u>15:20</u>
(F) Second Final Flow <u>44</u>	<input checked="" type="checkbox"/> Mileage <u>140 RT</u> 217	Comments <u>2hr Standby - Short Trip.</u>
(G) Final Shut-In <u>1263</u>	<input type="checkbox"/> Sampler _____	
(H) Final Hydrostatic <u>2063</u>	<input type="checkbox"/> Straddle _____	<input type="checkbox"/> Ruined Shale Packer _____
	<input type="checkbox"/> Shale Packer _____	<input type="checkbox"/> Ruined Packer _____

Initial Open 15
 Initial Shut-In 60
 Final Flow 15
 Final Shut-In 60

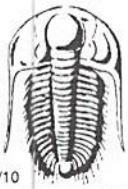
Extra Packer _____
 Extra Recorder _____
 Day Standby _____
 Accessibility _____

Sub Total 1792

Total 1792
 MP/DST Disc't _____

Approved By Charlie Sturdavant Our Representative [Signature]

TriLOBITE TESTING Inc. shall not be liable for damaged of any kind of the property or personnel of the one for whom a test is made, or for any loss suffered or sustained, directly or indirectly, through the use of its equipment, or its statements or opinion concerning the results of any test, tools lost or damaged in the hole shall be paid for at cost by the party for whom the test is made.



TRILOBITE TESTING INC.

1515 Commerce Parkway • Hays, Kansas 67601

Test Ticket

NO. 50041

4/10

Well Name & No. Medford Farms #1-15 Test No. #3 Date 2/18/13
 Company Forstar Petroleum Corp Elevation 3318 KB 3313 GL
 Address 1801 Broadway #900 Denver Colo 80202
 Co. Rep / Geo. Charles Stoddant Rig WW #8
 Location: Sec. 15 Twp. 105 Rge. 35W Co. Thomas State Ks

Interval Tested 4456 4670 Zone Tested Marm - Pt Scott
 Anchor Length 214 Drill Pipe Run 4321 Mud Wt. 9.2
 Top Packer Depth 4451 Drill Collars Run 124 Vis 52
 Bottom Packer Depth 4456 Wt. Pipe Run WL 8.0
 Total Depth 4670 Chlorides 9000 ppm System LCM #2

Blow Description B.O.B. in 1 min
No return
B.O.B. in 1 1/2 min.
No return

Rec	Feet of	%gas	%oil	%water	%mud
<u>217</u>	<u>Feet of wcm</u>		<u>45</u>	<u>55</u>	
<u>124</u>	<u>Feet of smcw</u>		<u>95</u>	<u>5</u>	
<u>2421</u>	<u>Feet of water</u>		<u>100</u>		
<u>186</u>	<u>Feet of water under circ sub</u>		<u>100</u>		

Rec Total 2948 BHT 129° Gravity API RW .351 @ 52° F Chlorides 27,500 ppm

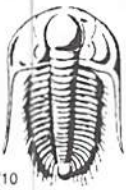
(A) Initial Hydrostatic <u>2210</u>	<input checked="" type="checkbox"/> Test <u>1250</u>	T-On Location <u>15:50</u>
(B) First Initial Flow <u>909</u>	<input checked="" type="checkbox"/> Jars <u>250</u>	T-Started <u>16:25</u>
(C) First Final Flow <u>1231</u>	<input checked="" type="checkbox"/> Safety Joint <u>75</u>	T-Open <u>18:12</u>
(D) Initial Shut-In <u>1370</u>	<input checked="" type="checkbox"/> Circ Sub <u>50</u> <u>5000</u>	T-Pulled <u>20:12</u>
(E) Second Initial Flow <u>1272</u>	<input type="checkbox"/> Hourly Standby <u> </u>	T-Out <u>23:00</u>
(F) Second Final Flow <u>1363</u>	<input checked="" type="checkbox"/> Mileage <u>140 RT</u> <u>217</u>	Comments <u> </u>
(G) Final Shut-In <u>1375</u>	<input type="checkbox"/> Sampler <u> </u>	
(H) Final Hydrostatic <u>2128</u>	<input type="checkbox"/> Straddle <u> </u>	<input type="checkbox"/> Ruined Shale Packer <u> </u>
	<input type="checkbox"/> Shale Packer <u> </u>	<input type="checkbox"/> Ruined Packer <u> </u>
	<input type="checkbox"/> Extra Packer <u> </u>	<input type="checkbox"/> Extra Copies <u> </u>

Initial Open 15
 Initial Shut-In 30
 Final Flow 15
 Final Shut-In 60

Sub Total 0
 Total 1842
 Sub Total 1842

Approved By Dan Gray Our Representative [Signature]

TriLOBITE TESTING INC. shall not be liable for damaged of any kind of the property or personnel of the one for whom a test is made, or for any loss suffered or sustained, directly or indirectly, through the use of its equipment, or its statements or opinion concerning the results of any test, tools lost or damaged in the hole shall be paid for at cost by the party for whom the test is made.



TRILOBITE TESTING INC.

1515 Commerce Parkway • Hays, Kansas 67601

Test Ticket

NO. 50042

4/10

Well Name & No. Medford farms #1-15 Test No. #4 Date 2/19/13
 Company Exstar Petroleum Corp Elevation 3318 KB 3313 GL
 Address 1801 Broadway #900 Denver, Colo 80202
 Co. Rep / Geo. Charlie Sturdevant Rig WVW #8
 Location: Sec. 15 Twp. 10.5 Rge. 35 Co. Thomas State KS

Interval Tested 4668 4792 Zone Tested Cherokee - Johnson
 Anchor Length 124 Drill Pipe Run 4543' Mud Wt. 9.2
 Top Packer Depth 4663 Drill Collars Run 124' Vis 54
 Bottom Packer Depth 4668 Wt. Pipe Run --- WL 8.0
 Total Depth 4792 Chlorides 5200 ppm System LCM 1 1/2 #

Blow Description 1/4" blow died in 12 min
No return
No blow
No blow

Rec	Feet of	%gas	%oil	%water	%mud
1'	Free oil	100			
10'	Socm	3		97	

Rec Total 11' BHT 115° Gravity --- API RW --- @ --- F Chlorides --- ppm

(A) Initial Hydrostatic 2395 Test 1250 T-On Location 15:30
 (B) First Initial Flow 24 Jars 250 T-Started 16:05
 (C) First Final Flow 31 Safety Joint 75 T-Open 18:25
 (D) Initial Shut-In 1164 Circ Sub N/C T-Pulled 20:55
 (E) Second Initial Flow 40 Hourly Standby T-Out 23:13
 (F) Second Final Flow 43 Mileage 140 RT 217
 (G) Final Shut-In 1117 Sampler
 (H) Final Hydrostatic 2271 Straddle Ruined Shale Packer
 Shale Packer Ruined Packer

Initial Open 15 Extra Packer Extra Copies
 Initial Shut-In 60 Extra Recorder Sub Total 0
 Final Flow 15 Day Standby Total 1792
 Final Shut-In 60 Accessibility MP/DST Disc't

Approved By Charlie Sturdevant Our Representative [Signature]
 Sub Total 1792

Trilobite Testing Inc. shall not be liable for damaged of any kind of the property or personnel of the one for whom a test is made, or for any loss suffered or sustained, directly or indirectly, through the use of its equipment, or its statements or opinion concerning the results of any test, tools lost or damaged in the hole shall be paid for at cost by the party for whom the test is made.