



DRILL STEM TEST REPORT

Prepared For: **E&B Resources**

1600 Norris Rd
Bakersfield CA 93308

ATTN: Rocky Milford

Walters B #6

2-12s 18w Ellis,KS

Start Date: 2013.04.09 @ 16:54:13

End Date: 2013.04.10 @ 00:35:33

Job Ticket #: 52075 DST #: 1

Trilobite Testing, Inc
PO Box 362 Hays, KS 67601
ph: 785-625-4778 fax: 785-625-5620

Printed: 2013.04.12 @ 14:18:35



**TRILOBITE
TESTING, INC.**

DRILL STEM TEST REPORT

E&B Resources

2-12s 18w Ellis,KS

1600 Norris Rd
Bakersfield CA 93308

Walters B #6

Job Ticket: 52075

DST#: 1

ATTN: Rocky Milford

Test Start: 2013.04.09 @ 16:54:13

GENERAL INFORMATION:

Formation: **Topeka**

Deviated: No Whipstock: ft (KB)

Time Tool Opened: 19:06:53

Time Test Ended: 00:35:33

Test Type: Conventional Bottom Hole (Initial)

Tester: Paul Simpson

Unit No: 41

Interval: 3185.00 ft (KB) To 3206.00 ft (KB) (TVD)

Reference Elevations: 2126.00 ft (KB)

Total Depth: 3206.00 ft (KB) (TVD)

2121.00 ft (CF)

Hole Diameter: 7.88 inches Hole Condition: Good

KB to GR/CF: 5.00 ft

Serial #: 8322 Outside

Press @ RunDepth: 34.96 psig @ 3189.00 ft (KB)

Capacity: 8000.00 psig

Start Date: 2013.04.09

End Date:

2013.04.10

Last Calib.: 2013.04.09

Start Time: 16:54:14

End Time:

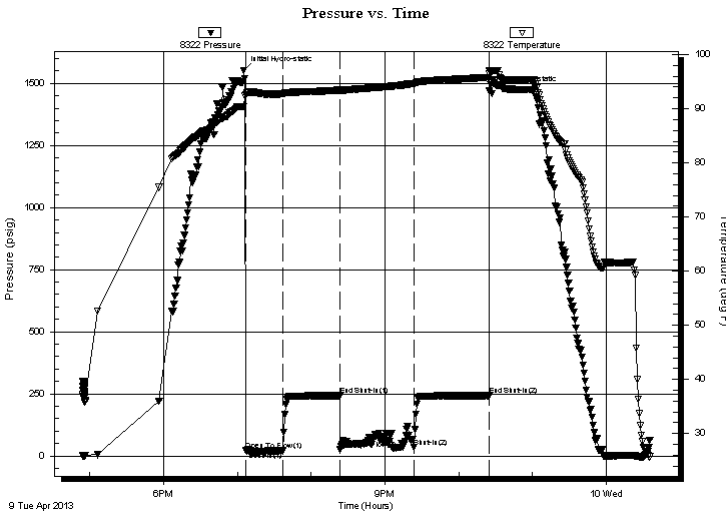
00:35:33

Time On Btm: 2013.04.09 @ 19:05:13

Time Off Btm: 2013.04.09 @ 22:24:43

TEST COMMENT: 30- 1/2" blow built to bottom of bucket in 8 minutes
45- weak surface blow
60- strong blow bottom of bucket in 30 seconds
60- no blow

PRESSURE SUMMARY



Time (Min.)	Pressure (psig)	Temp (deg F)	Annotation
0	1551.88	90.44	Initial Hydro-static
2	22.46	92.51	Open To Flow (1)
32	20.78	92.77	Shut-In(1)
79	243.28	93.46	End Shut-In(1)
79	26.74	93.36	Open To Flow (2)
139	34.96	94.62	Shut-In(2)
200	243.51	95.80	End Shut-In(2)
200	1469.82	96.46	Final Hydro-static

Recovery

Length (ft)	Description	Volume (bbl)
70.00	mud & water cut oil 20% m 15% w 65%	0.71
0.00	2760' GIP	0.00

Gas Rates

Choke (inches)	Pressure (psig)	Gas Rate (Mcf/d)



TRILOBITE TESTING, INC.

DRILL STEM TEST REPORT

E&B Resources

2-12s 18w Ellis,KS

1600 Norris Rd
Bakersfield CA 93308

Walters B #6

Job Ticket: 52075

DST#: 1

ATTN: Rocky Milford

Test Start: 2013.04.09 @ 16:54:13

GENERAL INFORMATION:

Formation: **Topeka**

Deviated: No Whipstock: ft (KB)

Time Tool Opened: 19:06:53

Time Test Ended: 00:35:33

Test Type: Conventional Bottom Hole (Initial)

Tester: Paul Simpson

Unit No: 41

Interval: 3185.00 ft (KB) To 3206.00 ft (KB) (TVD)

Reference Elevations: 2126.00 ft (KB)

Total Depth: 3206.00 ft (KB) (TVD)

2121.00 ft (CF)

Hole Diameter: 7.88 inches Hole Condition: Good

KB to GR/CF: 5.00 ft

Serial #: 6752 Inside

Press @ Run Depth: psig @ 3189.00 ft (KB)

Capacity: 8000.00 psig

Start Date: 2013.04.09

End Date:

2013.04.10

Last Calib.:

1899.12.30

Start Time: 16:54:24

End Time:

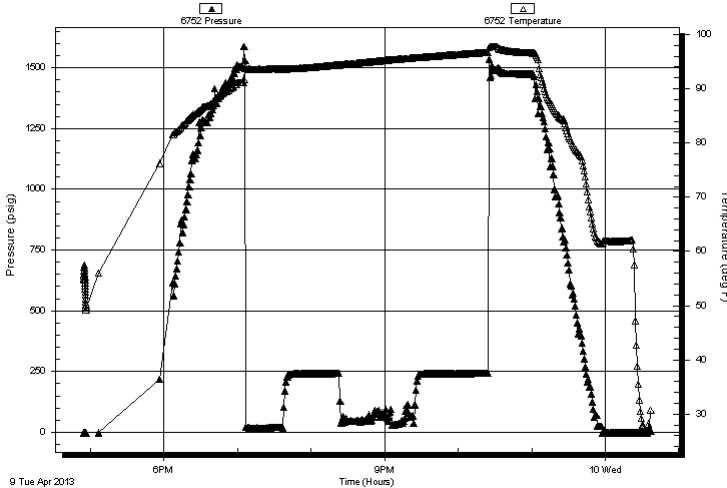
00:37:03

Time On Btm:

Time Off Btm:

TEST COMMENT: 30- 1/2" blow built to bottom of bucket in 8 minutes
45- weak surface blow
60- strong blow bottom of bucket in 30 seconds
60- no blow

Pressure vs. Time



PRESSURE SUMMARY

Time (Min.)	Pressure (psig)	Temp (deg F)	Annotation
-------------	-----------------	--------------	------------

Recovery

Length (ft)	Description	Volume (bbl)
70.00	mud & water cut oil 20% m 15% w 65%	0.71
0.00	2760' GIP	0.00

Gas Rates

Choke (inches)	Pressure (psig)	Gas Rate (Mcf/d)
----------------	-----------------	------------------



**TRILOBITE
TESTING, INC.**

DRILL STEM TEST REPORT

TOOL DIAGRAM

E&B Resources

2-12s 18w Ellis,KS

1600 Norris Rd
Bakersfield CA 93308

Walters B #6

Job Ticket: 52075

DST#: 1

ATTN: Rocky Milford

Test Start: 2013.04.09 @ 16:54:13

Tool Information

Drill Pipe:	Length: 3138.00 ft	Diameter: 3.80 inches	Volume: 44.02 bbl	Tool Weight: 2500.00 lb
Heavy Wt. Pipe:	Length: ft	Diameter: inches	Volume: - bbl	Weight set on Packer: 20000.00 lb
Drill Collar:	Length: 30.00 ft	Diameter: 2.25 inches	Volume: 0.15 bbl	Weight to Pull Loose: 55000.00 lb
			<u>Total Volume: - bbl</u>	Tool Chased 10.00 ft
Drill Pipe Above KB:	12.00 ft			String Weight: Initial 42000.00 lb
Depth to Top Packer:	3185.00 ft			Final 42000.00 lb
Depth to Bottom Packer:	ft			
Interval between Packers:	22.00 ft			
Tool Length:	51.00 ft			
Number of Packers:	2	Diameter: 6.75 inches		

Tool Comments:

Tool Description

Tool Description	Length (ft)	Serial No.	Position	Depth (ft)	Accum. Lengths
Change Over Sub	1.00			3157.00	
Shut In Tool	5.00			3162.00	
Hydraulic tool	5.00			3167.00	
Jars	5.00			3172.00	
Safety Joint	3.00			3175.00	
Packer	5.00			3180.00	29.00 Bottom Of Top Packer
Packer	5.00			3185.00	
Stubb	1.00			3186.00	
Perforations	3.00			3189.00	
Recorder	0.00	6752	Inside	3189.00	
Recorder	0.00	8322	Outside	3189.00	
Perforations	15.00			3204.00	
Bullnose	3.00			3207.00	22.00 Bottom Packers & Anchor

Total Tool Length: 51.00



**TRILOBITE
TESTING, INC.**

DRILL STEM TEST REPORT

FLUID SUMMARY

E&B Resources

2-12s 18w Ellis,KS

1600 Norris Rd
Bakersfield CA 93308

Walters B #6

Job Ticket: 52075

DST#: 1

ATTN: Rocky Milford

Test Start: 2013.04.09 @ 16:54:13

Mud and Cushion Information

Mud Type: Gel Chem

Cushion Type:

Oil API:

deg API

Mud Weight: 9.00 lb/gal

Cushion Length:

ft

Water Salinity:

ppm

Viscosity: 62.00 sec/qt

Cushion Volume:

bbbl

Water Loss: 6.78 in³

Gas Cushion Type:

Resistivity: ohm.m

Gas Cushion Pressure:

psig

Salinity: ppm

Filter Cake: inches

Recovery Information

Recovery Table

Length ft	Description	Volume bbl
70.00	mud & water cut oil 20%m 15% w 65%o	0.709
0.00	2760' GIP	0.000

Total Length: 70.00 ft Total Volume: 0.709 bbl

Num Fluid Samples: 0

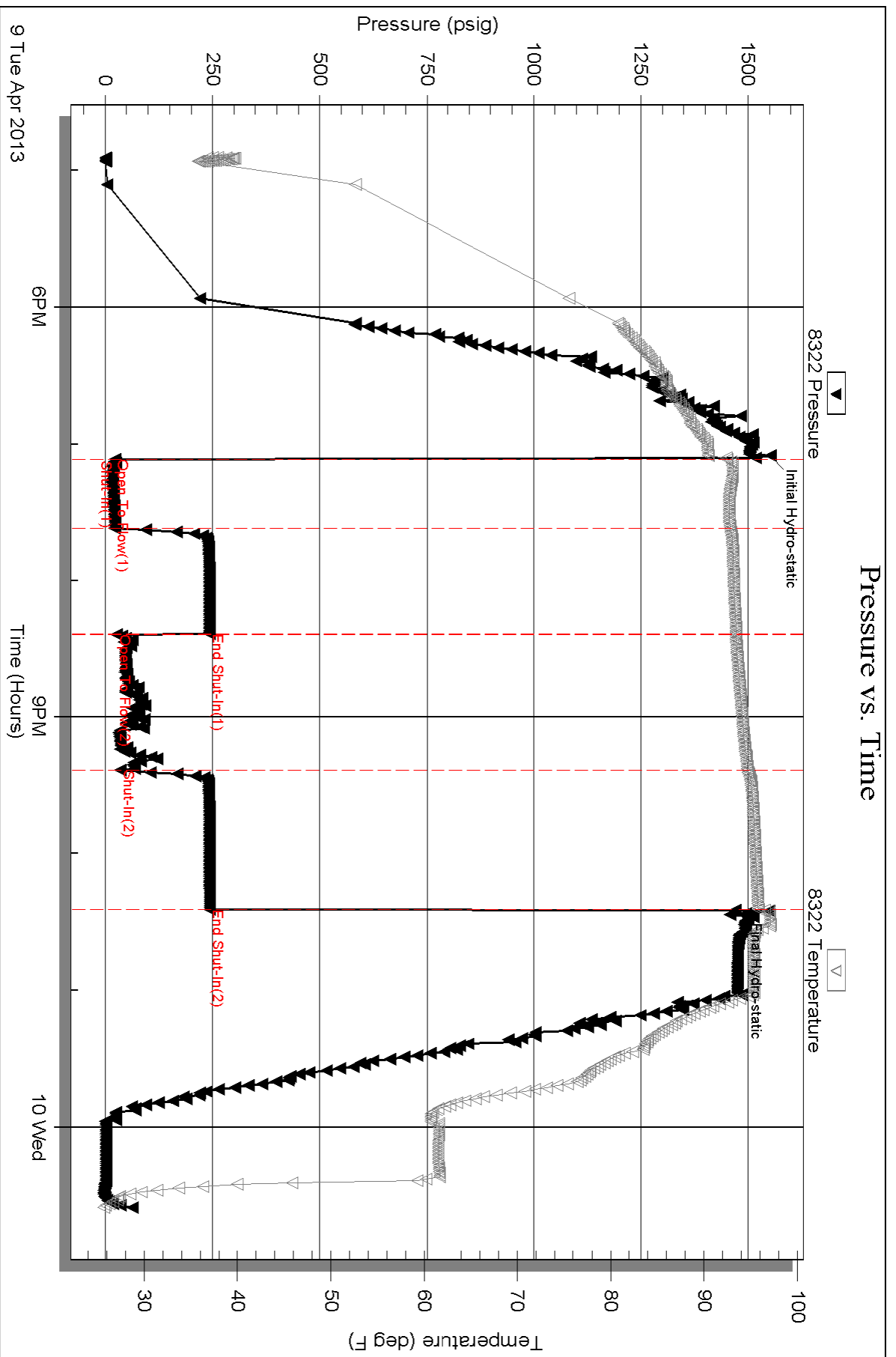
Num Gas Bombs: 0

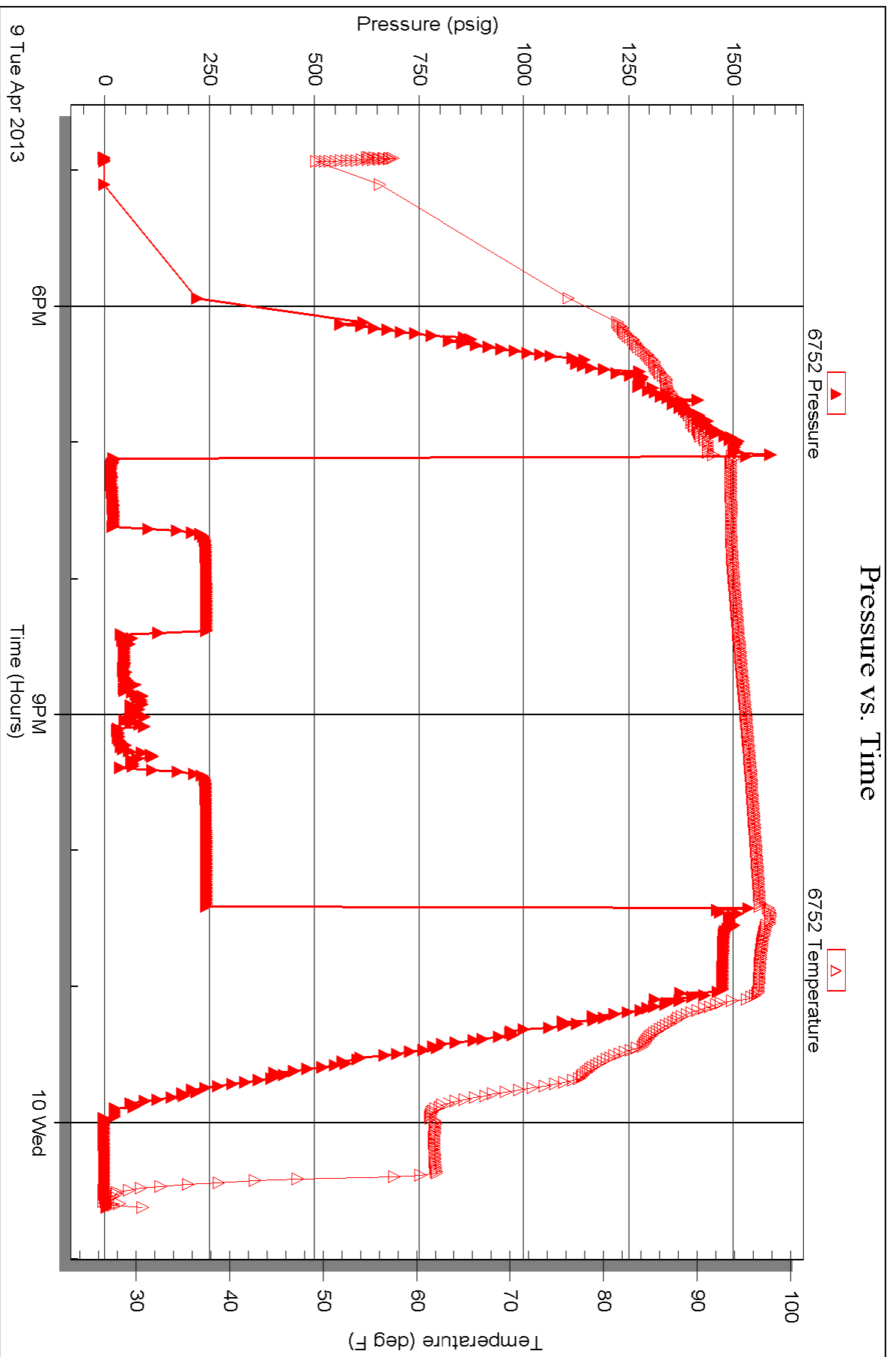
Serial #:

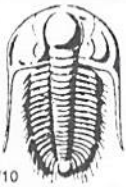
Laboratory Name:

Laboratory Location:

Recovery Comments: plugging action during final flow







TRILOBITE TESTING INC.

1515 Commerce Parkway • Hays, Kansas 67601

Test Ticket

NO. 52075

Well Name & No. Walter B #6 Test No. 1 Date 4/9/13
 Company E & B Natural Resources Elevation 2126 KB 2121 GL
 Address _____
 Co. Rep / Geo. Rocky Milford Rig Muhm #16
 Location: Sec. 2 Twp. 12s Rge. 18w Co. Ellis State Ks

Interval Tested 3185-3206 Zone Tested Mid Topelca
 Anchor Length 21 Drill Pipe Run 3188 Mud Wt. 8.2
 Top Packer Depth 3180 Drill Collars Run 30 Vis 62
 Bottom Packer Depth 3185 Wt. Pipe Run _____ WL 6.8
 Total Depth 3206 Chlorides _____ ppm System LCM

Blow Description 1/2" blow building to bottom of bucket in 8

minutes
DST surface blow

ff - strong - bottom of bucket 30 seconds FSI - no blow

Rec	Feet of	%gas	%oil	%water	%mud
<u>70</u>	<u>⊙ mud + wco</u>	<u>65</u>	<u>15</u>	<u>20</u>	
Rec	Feet of	%gas	%oil	%water	%mud
<u>2760</u>	<u>61P</u>				
Rec	Feet of	%gas	%oil	%water	%mud
Rec	Feet of	%gas	%oil	%water	%mud

Rec Total 70 BHT _____ Gravity _____ API RW _____ @ _____ °F Chlorides _____ ppm

(A) Initial Hydrostatic 1552 Test 1150 T-On Location 1520
 (B) First Initial Flow 22 Jars 250 T-Started 1654
 (C) First Final Flow 21 Safety Joint 75 T-Open 1908
 (D) Initial Shut-In 243 Circ Sub _____ T-Pulled 2223
 (E) Second Initial Flow 27 Hourly Standby _____ T-Out 0005
 (F) Second Final Flow 35 Mileage 30 RT X 2 93 Comments Back weather
 (G) Final Shut-In 243 Sampler _____ loaded tools 4/11
 (H) Final Hydrostatic 1469 Straddle _____ 0024

Ruined Shale Packer
 Ruined Packer
 Extra Copies
 Initial Open 30
 Initial Shut-In 45
 Final Flow 60
 Final Shut-In 60
 Sub Total 0
 Total 1568
 MP/DST Disc't _____
 Sub Total 1568

Approved By Robert Milford Our Representative Ken Simpson
 Trilobite Testing Inc. shall not be liable for damaged of any kind of the property or personnel of the one for whom a test is made, or for any loss suffered or sustained, directly or indirectly, through the use of its equipment, or its statements or opinion concerning the results of any test. Tools lost or damaged in the hole shall be paid for at cost by the party for whom the test is made.