

DRILL STEM TEST REPORT

Prepared For: **Gore Oil Company**

202 S. St. Francis
Wichita, KS 67202

ATTN: Al Downing

Ganoung B #2

32-9s-17w Rooks,.KS

Start Date: 2012.10.16 @ 22:57:47

End Date: 2012.10.17 @ 06:01:32

Job Ticket #: 48708 DST #: 1

Trilobite Testing, Inc

PO Box 362 Hays, KS 67601

ph: 785-625-4778 fax: 785-625-5620

Printed: 2012.10.18 @ 14:22:05

Gore Oil Company

32-9s-17w Rooks,.KS

Ganoung B #2

DST # 1

Lansing C-D

2012.10.16

DRILL STEM TEST REPORT



Gore Oil Company

202 S. St. Francis
Mchita, KS 67202

ATTN: Al Dow ning

32-9S-17W Rooks, KS

Ganoung B #2

Job Ticket: 48708

DST#: 1

Test Start: 2012.10.16 @ 22:57:47

GENERAL INFORMATION:

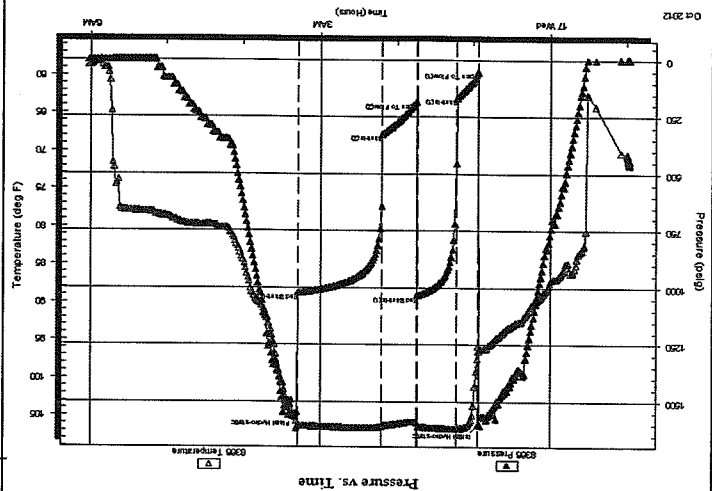
Formation: Lansing C-D
Deviated: No
Whipstock: ft (KB)
Time Tool Opened: 00:56:02
Time Test Ended: 06:01:32
Interval: 3282.00 ft (KB) To 3330.00 ft (KB) (TVD)
Total Depth: 3330.00 ft (KB) (TVD)
Hole Diameter: 7.88 inchesHole Condition: Good
KB to GR/CF: 8.00 ft

Serial #: 8366 Inside
Press@RunDepth: 325.88 psig @ 3317.00 ft (KB)
Start Date: 2012.10.16
End Date: 2012.10.17

Capacity: 8000.00 psig
Last Calib.: 2012.10.17
Time On Btm: 2012.10.17 @ 00:55:47
Time Off Btm: 2012.10.17 @ 03:18:47

TEST COMMENT:

IFP-Strong, BOB in 2 Min.
IS-Blow back Built to 1/2"
FFP-Strong, BOB in 2-1/2 Min.
FSI-Blow back Built to 1"



Recovery

Length (ft)	Description	Volume (bb)
180.00	Muddy Water-90%W-10%M	2.52
510.00	Gassy Frothy Oil 50%G-50%O	7.15
0.00	690' Gas in Pipe	0.00

Gas Rates

Choke (inches)	Pressure (psig)	Gas Rate (Mcf/d)

PRESSURE SUMMARY

Time (Min.)	Pressure (psig)	Temp (deg F)	Annotation
0	1599.32	96.43	Initial Hydro-static
1	52.82	95.78	Open To Flow (1)
17	167.01	106.54	Shut-in(1)
48	1034.05	106.47	End Shut-in(1)
48	183.98	105.98	Open To Flow (2)
77	325.88	106.31	Shut-in(2)
143	1022.53	106.30	End Shut-in(2)
143	1546.53	106.51	Final Hydro-static

DRILL STEM TEST REPORT



Gore Oil Company
 202 S. St. Francis
 Wichita, KS 67202
 ATTN: Al Downing

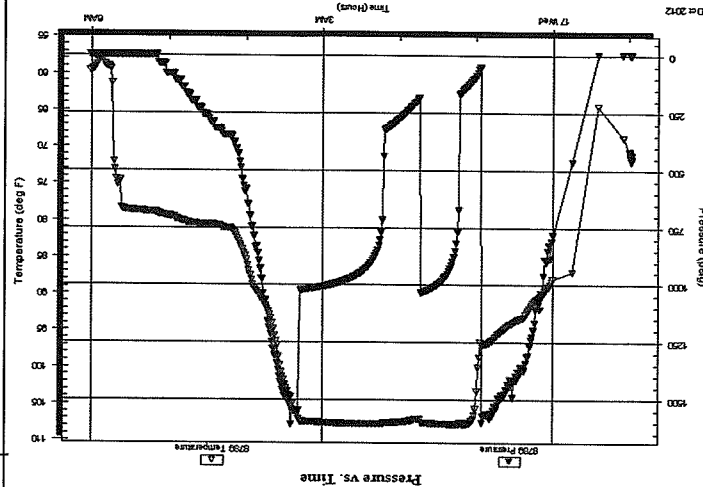
32-9s-17w Rooks, KS
 Ganoung B #2
 Job Ticket: 48708
 DST#: 1
 Test Start: 2012.10.16 @ 22:57:47

GENERAL INFORMATION:

Formation: Lansing C-D
 Deviated: No
 Whipstock: No
 Time Tool Opened: 00:56:02
 Time Test Ended: 06:01:32
 Interval: 3282.00 ft (KB) To 3330.00 ft (KB) (TVD)
 Total Depth: 3330.00 ft (KB) (TVD)
 Hole Diameter: 7.88 inches/Hole Condition: Good
 Serial #: 8789
 Outside
 Press@RunDepth: psig @ 3317.00 ft (KB)
 Start Date: 2012.10.16
 End Date: 2012.10.17
 Start Time: 22:58:04
 End Time: 06:01:47
 Capacity: 8000.00 psig
 Last Callb.: 2012.10.17
 Time On Btm: 2012.10.17
 Time Off Btm: 2012.10.17
 Reference Elevations: 2093.00 ft (KB)
 2085.00 ft (CF)
 8.00 ft
 KB to GR/CF:
 Test Type: Conventional Bottom Hole (Initial)
 Tester: Jason McLemore
 Unit No: 54

TEST COMMENT:

I/P-Strong, BOB in 2 Min.
 IS-Blow back Built to 1/2"
 FFP-Strong, BOB in 2-1/2 Min.
 FS-Blow back Built to 1"



PRESSURE SUMMARY

Time (Min.)
 Pressure (psig)
 Temp (deg F)
 Annotation

Recovery

Length (ft)	Description	Volume (bbl)
180.00	Muddy Water-90%W-10%M	2.52
510.00	Gassy Frothy Oil 50%G-50%O	7.15
0.00	690' Gas In Pipe	0.00

Gas Rates

Choke (Inches)	Pressure (psig)	Gas Rate (Mcf/d)

Trilobe Testing, Inc

Ref. No: 48708

Printed: 2012.10.18 @ 14:22:07

DRILL STEM TEST REPORT		TOOL DIAGRAM	
<p>DRILL PIPE: Length: 3275.00 ft Diameter: 3.80 inches Volume: 45.94 bbl Heavy Wt. Pipe: Length: 0.00 ft Diameter: 2.70 inches Volume: 0.00 bbl Drill Collar: Length: 0.00 ft Diameter: 2.25 inches Volume: 0.00 bbl Drill Pipe Above KB: 14.00 ft Depth to Top Packer: 3282.00 ft Interval between Packers: 48.00 ft Tool Length: 69.00 ft Number of Packers: 2 Diameter: 6.75 inches Tool Comments:</p>		<p>Tool Information</p> <p>Drill Pipe: 2000.00 lb Weight set on Packer: 2500.00 lb Weight to Pull Loose: 5500.00 lb Tool Chased 0.00 ft String Weight: Initial 48000.00 lb Final 50000.00 lb</p>	
Tool Description			
Length (ft)	Serial No.	Position	Depth (ft) Accum. Lengths
1.00			3262.00
5.00			3267.00
5.00			3272.00
5.00			3277.00
5.00			3282.00
1.00			3283.00
1.00			3284.00
1.00			3285.00
31.00			3316.00
1.00			3317.00
0.00	8366	Inside	3317.00
0.00	8789	Outside	3317.00
10.00			3327.00
3.00			3330.00
Total Tool Length:			69.00
Packer			48.00
Bottom Packers & Anchor			21.00
Change Over Sub			
Shut In Tool			
Hydraulic tool			
Packer			



Gore Oil Company
 202 S. St. Francis
 Wichita, KS 67202


32-9s-17w Rooks, KS
Ganung B #2
 Job Ticket: 48708
 DST#: 1
 ATTN: Al Dow ning
 Test Start: 2012.10.16 @ 22:57:47

Length ft	Description	Volume bbl
180.00	Muddy Water-90%W-10%M	2.525
510.00	Gassy Frothy Oil 50%-G-50%O	7.154
0.00	690' Gas In Pipe	0.000
Total Length: 690.00 ft		
Total Volume: 9.679 bbl		
Num Fluid Samples: 0		
Num Gas Bombs: 0		
Series #:		
Laboratory Name:		
Laboratory Location:		
Recovery Comments:		

Recovery Information

Mud Type: Gel Chem	Mud Weight: 9.00 lb/gal	Cushion Type:	Oil API: 36 deg API
Viscosity: 50.00 sec/qt	Water Loss: 8.79 in ³	Cushion Length: ft	Water Salinity: 49000 ppm
Resistivity: ohm.m	Gas Cushion Type:	Cushion Volume: bbl	
Salinity: 2000.00 ppm	Gas Cushion Pressure: psig		
Filter Cake: inches			

Mud and Cushion Information

 <p>TRIBLOBITE TESTING, INC</p>	Gore Oil Company 202 S. St. Francis Wichita, KS 67202
	Gannong B #2 Job Ticket: 48708 DST#: 1
32-9s-17w Rooks, KS ATTN: Al Downing Test Start: 2012.10.16 @ 22:57:47	

DRILL STEM TEST REPORT

FLUID SUMMARY

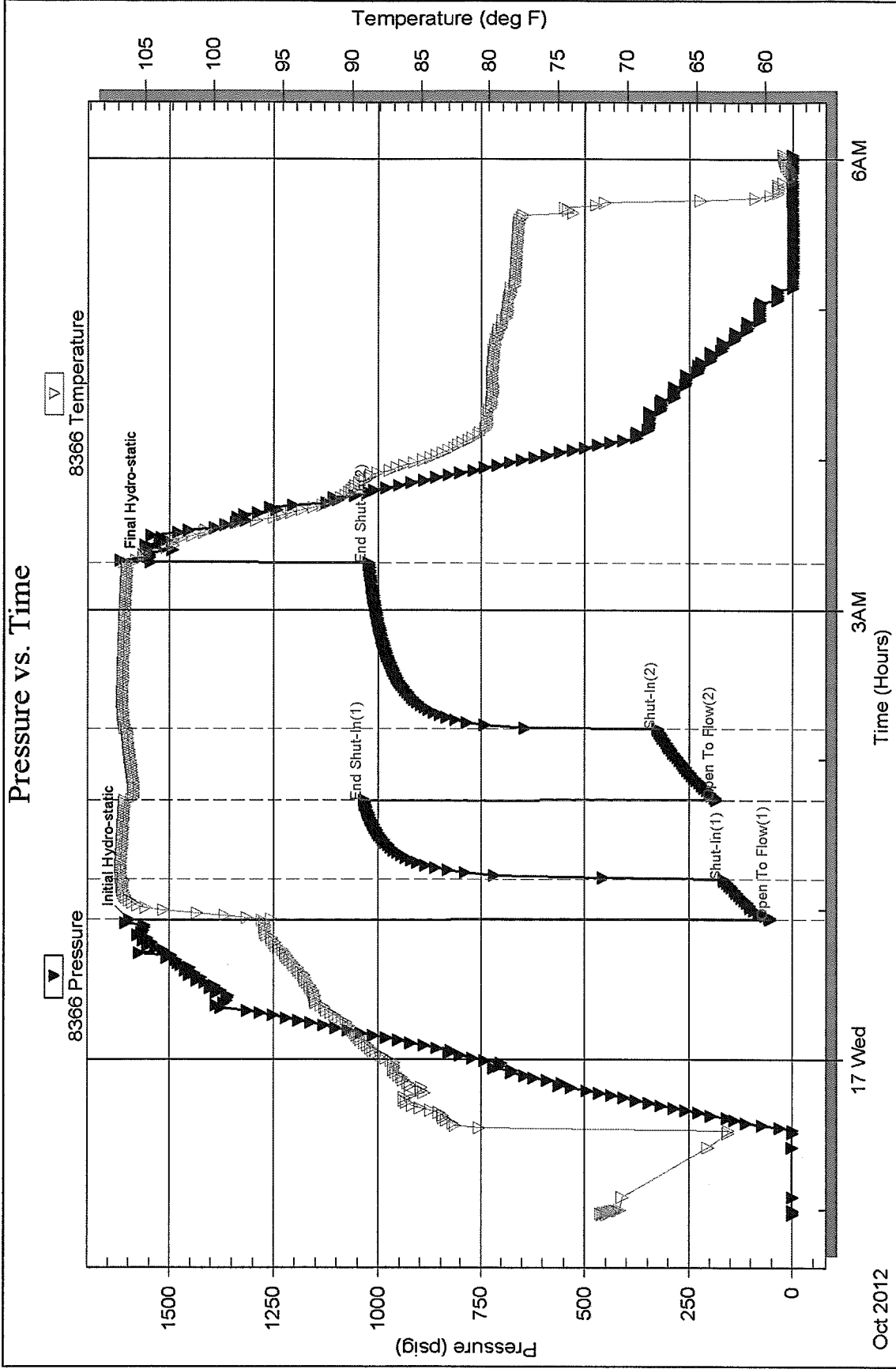
Serial #: 8366

Inside

Gore Oil Company

Ganoung B #2

DST Test Number: 1



Serial #: 8789

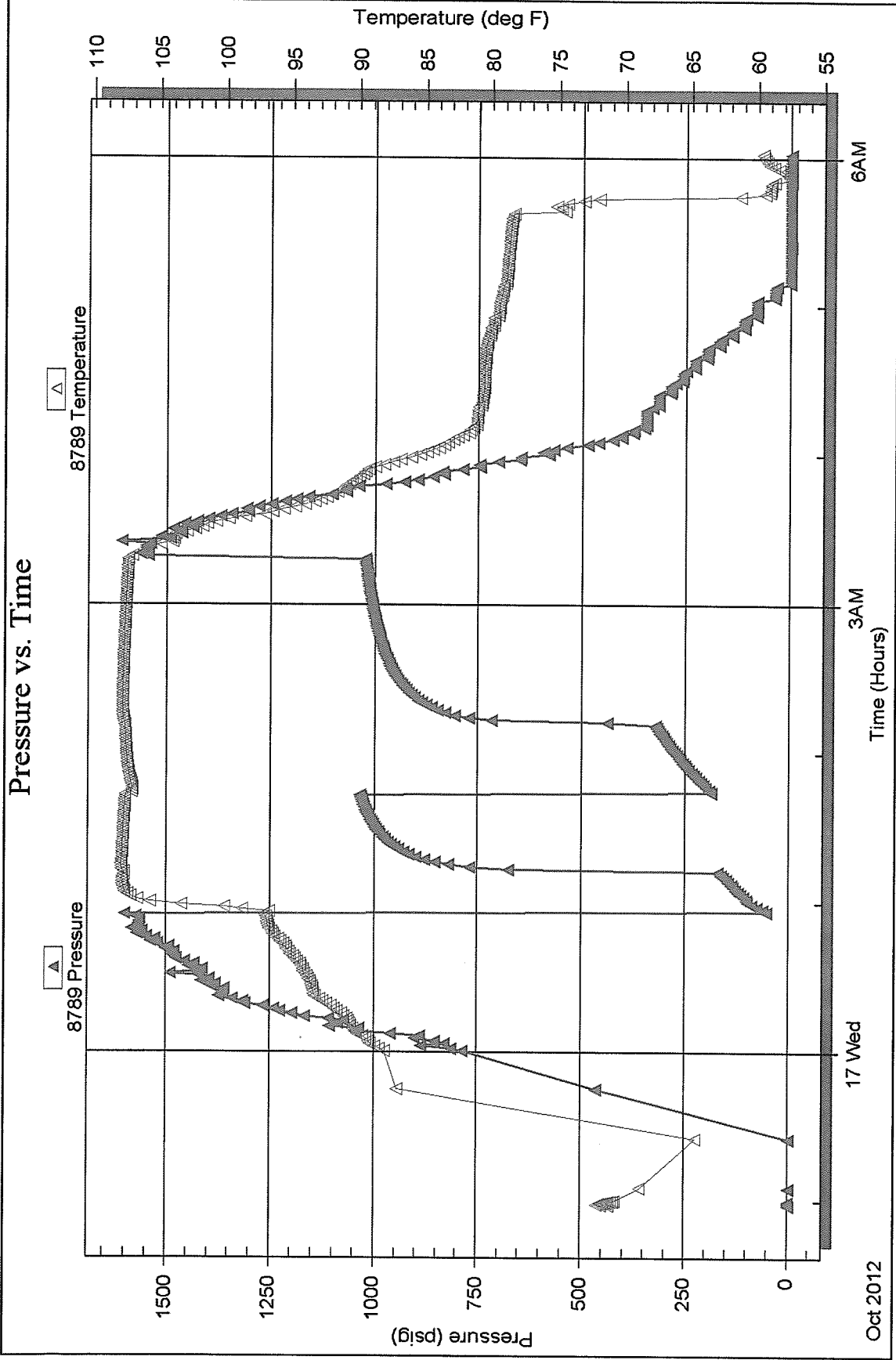
Outside

Gore Oil Company

Ganoung B #2

DST Test Number: 1

Pressure vs. Time



Trilobite Testing, Inc

Ref. No: 48708

Printed: 2012.10.18 @ 14:22:10

Test Ticket

NO. 48708

ING INC. P.O. Box 1733 • Hays, Kansas 67601

Well Name & No.	Gauging B # 2		
Company	Gore Oil Company		
Address	202 S. St Francis, Wichita, KS 67202		
Co. Rep/Geo.	Al Downing		
Location: Sec.	32	Twp.	9S
	Rge.		17W
	Co.		Rooks
	State		KS

Interval Tested	3282-3330
Anchor Length	48'
Top Packer Depth	3277
Bottom Packer Depth	3282
Total Depth	3330
Blow Description	TFP - Strong, BOB in 2 min.
	ISI - Blowback Bait + 1/2'
	FFP - Strong, BOB in 2 1/2 min
	FSI - Blowback Bait + 1"

Rec	Feet of	%gas	%oil	%water	%mud
510	Feet of	50	50	90	10
	Feet of				
	Feet of				
	Feet of				
	Feet of				
	Feet of				
	Feet of				

Rec Total	690
Initial Hydrostatic	1599
(B) First Initial Flow	53
(C) First Final Flow	167
(D) Initial Shut-in	1034
(E) Second Initial Flow	184
(F) Second Final Flow	326
(G) Final Shut-in	1023
(H) Final Hydrostatic	1547
Initial Open	15
Initial Shut-in	32
Final Flow	30
Final Shut-in	60

Approved By _____

Our Representative _____

Sub Total 1239.90

MP/DST Disc't _____

Total 1239.90

Sub Total 0

Extra Copies _____

Extra Packer _____

Ruined Packer _____

Ruined Shale Packer _____

Shale Packer _____

Straddle _____

Sampler _____

Mileage 58rt 89.90

Hourly Standby _____

Circ Sub _____

Safety Joint _____

Jars _____

Test 1150

Comments _____

T-On Location 22:05

T-Started 22:55

T-Open 24:55

T-Pulled 3:10

T-Out 6:00

Tribble Testing Inc. shall not be liable for damaged or opinion concerning the results of any test, tools lost or damaged in the hole for whom a test is made, or for any loss suffered or sustained, directly or indirectly, through the use of its equipment, or its statements or opinion concerning the results of any test, tools lost or damaged in the hole for whom a test is made, or for any loss suffered or sustained, directly or indirectly, through the use of its