



Office (620) 588-4250 212 Main St. • P.O. Box 215 • Clarin, KS 67525 Home (620) 587-3444

James C. Musgrove  
Petroleum Geologist

# GEOLOGIST'S REPORT

DRILLING TIME AND SAMPLE LOG

COMPANY John Roy Evans Oil & Gas LLC LEASE Zorn B #3 FIELD Demelo LOCATION SW-nene-11W (520' FNL & 3285' F&L) SEC 6 TWP 17S RGE 11W COUNTY Barton STATE Kansas CONTRACTOR Mineschak Drilling LLC SPUD 11/26/12 COMP 12/1/12 RTD 3337 LTD 3332 MUD UP 2600 TYPE MUD Chemical Displaced ELEVATION 1879 DF 1866 Measurements Are All From -KB- SURFACE 8 3/8" 745' PRODUCTIVE 5 1/2" 20' BY Pioneer D/L, C/L, C/O, M/L

SAMPLES SAVED FROM 2800 TO TO DRILLING TIME KEPT FROM 2800 TO TO SAMPLES EXAMINED FROM 2800 TO TO GEOLOGICAL SUPERVISION FROM 2900 TO TO GEOLOGIST ON WELL Jim Musgrove & Josh Austin

FORMATION TOPS	LOG	SAMPLES
<u>anhydrite</u>	<u>735 +1144</u>	
<u>Base anhydrite</u>	<u>761 +1118</u>	
<u>Heelover</u>	<u>2945 -1066</u>	
<u>Tarranto</u>	<u>2961 -1082</u>	
<u>Douglas</u>	<u>2972 -1093</u>	
<u>Erwin Lime</u>	<u>3043 -1164</u>	
<u>Mansing</u>	<u>3058 -1179</u>	
<u>Base Kansas City</u>	<u>3306 -1427</u>	
<u>Arbuckle</u>	<u>3321 -1442</u>	
<u>RTD</u>	<u>3337 -1442</u>	

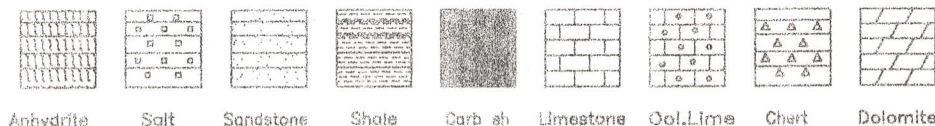
MARKS

5 1/2" production casing was set & cemented on the Zorn B #3.

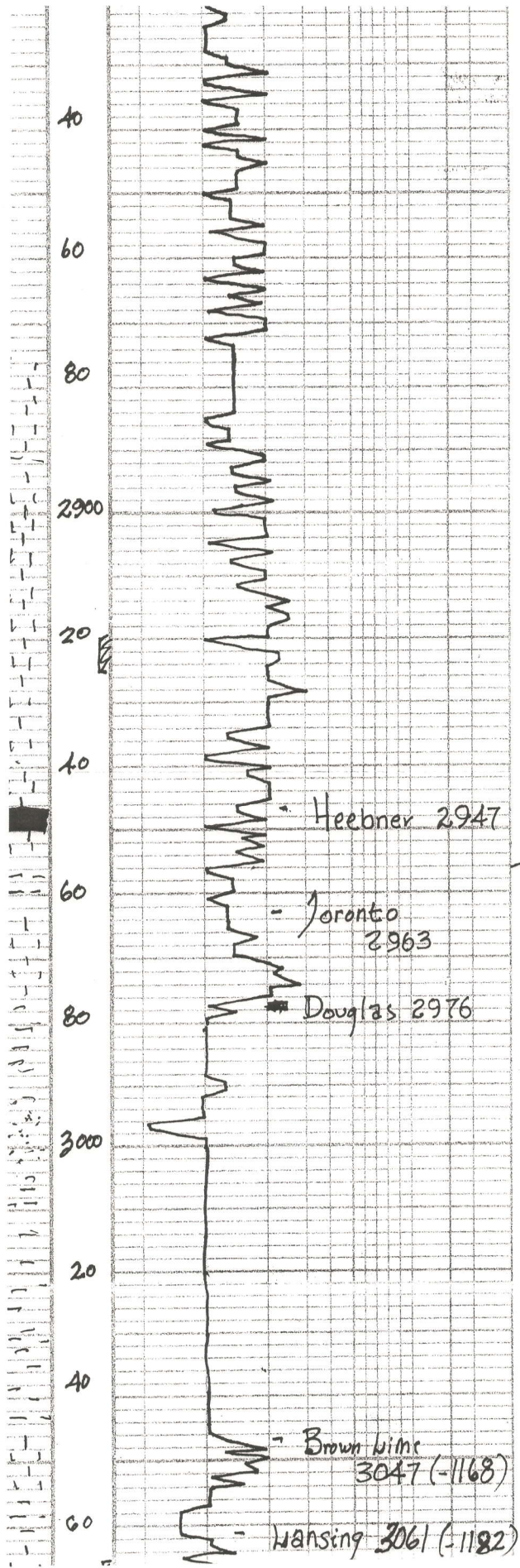


Respectfully submitted:  
James C. Musgrove & Josh Austin  
Petroleum Geologist

## LEGEND



DEPTH	DRILLING TIME (Logarithmic Scale)	SAMPLE DESCRIPTIONS	REMARKS
5			
1			
2			
3			
4			
5			
10			
15			
20			
30			



ls; tan, gray, mottled  
cherty; Poor g' n/s

ls; tan, fossil; Poor vis  
gr. gy fossil

ls; tan/gray; fossil; few  
cherty subcom  
sl. gy/light gy  
brnky

gr. ls, gray, fossil, sects of  
gr. dk brown stn  
m-fine heads

blk carb. sh.  
ls; tan, fossil; dry

ls; wh/cream, fr. cherty  
poor o', gr. light brown stn  
m. sh., nodular

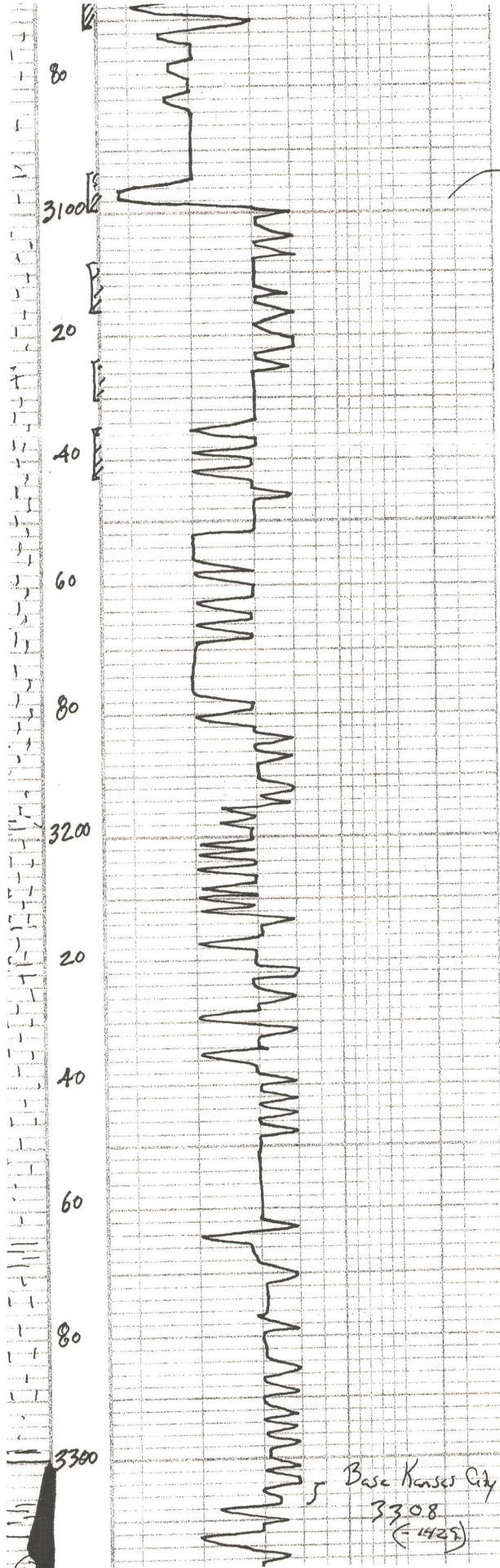
gy/mar-green silty  
sh

sand; tan, gray - grayish green,  
v. sh; sub rounded mica; sects of  
brown stn, Jr. fo, ft. odor

gy, mica; sand; Jr fo Sz

aa.

ls; tan, brown, fr. slightly  
dry (dsc)



brown str, gr. fo, no odor

33

NS, gray, wh, ool, scatt o  
 fr. brown str/sat, SF o  
 ??? odor samples broken  
 (few sub room)

LS; gray ool/foss chky  
 few scatt o Tr brn str NSFo  
 poor visiblt o dy m para

LS; crm-wh ool chky  
 1/2 type o few foss est o  
 Tr brn str NSFo No odor

NS; gray-crm-buff ool  
 sub room chky in part  
 fr ool type o (barren)

LS; tan-crm as  
 N/S

LS; crm-th. gray-buff, finest  
 chky in part poorly dev o  
 N/S

gray-blk shale

LS; crm foss/ool  
 chky fr foss; est-1/2  
 brn str SFo fr odor

LS; crm-gray fxl foss  
 chky in part fr brn str  
 Tr fo faint dev o  
 twk chky

blk carb shale

LS; crm-gray tan fat dense  
 foss chky in part poor vis. o  
 N/S

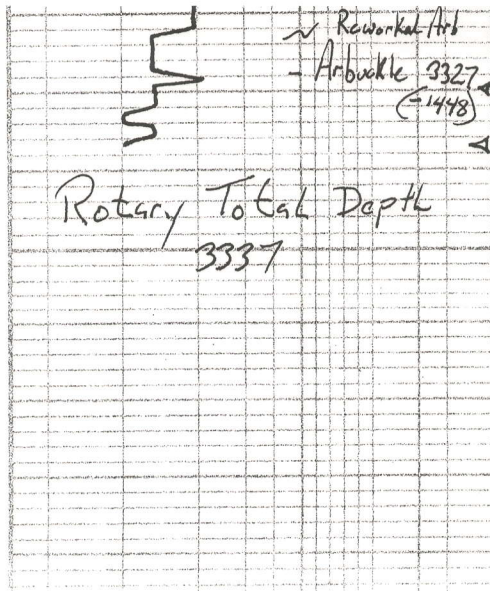
LS; crm-gray fat chky dense  
 poor vis. dy 1/3

gray-green shale

DST #1 3300-333.  
 30-45-30-60  
 Blow. BOB in 3 min  
 No blow back  
 Firm BOB in 6 min  
 No blow back  
 Recovery 510' Clean C  
 380' C.M.C.

Base Kansas City  
 3308  
 (-1425)

20  
40  
60  
80



Reworked Arb  
- Arbuckle 3327  
(1448)

Med-coarse xl "Sandy" in part  
fr. 1x4" brn str SFO fr  
over  
Dolomite. Lh. con. H. gr. Med xl  
fr. 1x4" brn str SFO/SAT  
good over

(9% gas 59% oil 32%  
Pressures, ISIP 1010  
FSIP 988  
IFP 30-208  
FFP 220-575  
HSH 1555  
-1551  
(log measurement  
DST 3295-333

3400