



RECEIVED

FEB 04 2013

INVOICE

PO Box 93999
Southlake, TX 76092

Invoice Number: 134562

Invoice Date: Jan 21, 2013

Voice: (817) 546-7282
Fax: (817) 246-3361

Page: 1

Bill To:
Palomino Petroleum, Inc. 4924 SE 84th St. Newton, KS 67114-8827

Now Includes:



Customer ID	Well Name# or Customer P.O.	Payment Terms	
Palo	Stoll Olivia #1	Net 30 Days	
Job Location	Camp Location	Service Date	Due Date
KS1-03	Oakley	Jan 21, 2013	2/20/13

Quantity	Item	Description	Unit Price	Amount
132.00	MAT	Class A Common	17.90	2,362.80
88.00	MAT	Pozmix	9.35	822.80
8.00	MAT	Gel	23.40	187.20
55.00	MAT	Flo Seal	2.97	163.35
236.28	SER	Cubic Feet	2.48	585.97
197.40	SER	Ton Mileage	2.60	513.24
1.00	SER	Plug to Abandon	2,483.59	2,483.59
20.00	SER	Pump Truck Mileage	7.70	154.00
20.00	SER	Light Vehicle Mileage	4.40	88.00
1.00	EQP	8.5/8 Wooden Plug	107.64	107.64
1.00	CEMENTER	Darren Racette		
1.00	EQUIP OPER	Tyler Flipse		
1.00	OPER ASSIST	Brandon Wilkinson		

ALL PRICES ARE NET, PAYABLE
30 DAYS FOLLOWING DATE OF
INVOICE. 1 1/2% CHARGED
THEREAFTER. IF ACCOUNT IS
CURRENT, TAKE DISCOUNT OF

\$ 2315.26

ONLY IF PAID ON OR BEFORE
Feb 15, 2013

Subtotal	7,468.59
Sales Tax	582.55
Total Invoice Amount	8,051.14
Payment/Credit Applied	
TOTAL	8,051.14



RECEIVED
JAN 22 2013

INVOICE

PO Box 93999
Southlake, TX 76092

Invoice Number: 134387

Invoice Date: Jan 10, 2013

Voice: (817) 546-7282
Fax: (817) 246-3361

Page: 1

Bill To:

Palomino Petroleum, Inc.
4924 SE 84th St.
Newton, KS 67114-8827

Now Includes:



Customer ID	Well Name# or Customer P.O.	Payment Terms	
Paio	Stoll Olivia #1	Net 30 Days	
Job Location	Camp Location	Service Date	Due Date
KS1-01	Oakley	Jan 10, 2013	2/9/13

Quantity	Item	Description	Unit Price	Amount
165.00	MAT	Class A Common	17.90	2,953.50
3.00	MAT	Gel	23.40	70.20
6.00	MAT	Chloride	64.00	384.00
178.42	SER	Cubic Feet	2.48	442.48
162.80	SER	Ton Mileage	2.60	423.28
1.00	SER	Surface	1,512.25	1,512.25
20.00	SER	Pump Truck Mileage	7.70	154.00
1.00	SER	Manifold Swedge Rental	275.00	275.00
20.00	SER	Light Vehicle Mileage	4.40	88.00
1.00	CEMENTER	LaRene Wentz		
1.00	OPER ASSIST	Paul Beaver		
1.00	OPER ASSIST	Brandon Wilkinson		

ALL PRICES ARE NET, PAYABLE
30 DAYS FOLLOWING DATE OF
INVOICE. 1 1/2% CHARGED
THEREAFTER. IF ACCOUNT IS
CURRENT, TAKE DISCOUNT OF

\$ 1449.62

ONLY IF PAID ON OR BEFORE

Feb 4, 2013

Subtotal	6,302.71
Sales Tax	265.80
Total Invoice Amount	6,568.51
Payment/Credit Applied	
TOTAL	6,568.51

ALLIED OIL & GAS SERVICES, LLC 050862

Federal Tax I.D.# 20-5975804

REMIT TO P.O. BOX 93999
SOUTH LAKE, TEXAS 76092

SERVICE POINT:
Oakley, KS

DATE 1-10-13 SEC. 23 TWP. 13 RANGE 33 CALLED OUT _____ ON LOCATION 18:00 pm JOB START 10:30p JOB FINISH 11:00pm
 LEASE 3.221 Stall Olivia WELL# 1 LOCATION Oakley, KS 115, w/o 390 COUNTY Logan STATE KS
 OLD OR NEW (Circle one) NEW 95, w into 1.01 7.8

CONTRACTOR Ual #7
 TYPE OF JOB Surface
 HOLE SIZE 12 1/4 T.D. 223
 CASING SIZE 8 1/8 DEPTH 223
 TUBING SIZE _____ DEPTH _____
 DRILL PIPE _____ DEPTH _____
 TOOL _____ DEPTH _____
 PRES. MAX _____ MINIMUM _____
 MEAS. LINE _____ SHOE JOINT _____
 CEMENT LEFT IN CSG. 181
 PERFS. _____
 DISPLACEMENT 13.31

OWNER Same
 CEMENT AMOUNT ORDERED 165 sks com 3% cel
2% gel
 COMMON 165 sks @ 12.20 2953.50
 POZMIX _____ @ _____
 GEL 385 @ 22.90 70.20
 CHLORIDE 66.75 @ 69.00 384.00
 ASC _____ @ _____

EQUIPMENT
 PUMP TRUCK CEMENTER Lakene Wentz
 # 431 HELPER Paul Beaver
 BULK TRUCK
 # 347 DRIVER Brandon Wilkerson
 BULK TRUCK
 # _____ DRIVER _____

HANDLING 128.42 84.80 @ 2.18 442.48
 MILEAGE 8.147 miles X 20 X 2.60 423.28
 TOTAL 5273.46

REMARKS:
mix 165 sks cement
Displace with water
Cement did circulate

SERVICE
 DEPTH OF JOB 2231
 PUMP TRUCK CHARGE _____ 1512.25
 EXTRA FOOTAGE _____ @ _____
 MILEAGE MEHU 20 @ 7.70 154.00
 MANIFOLD Swedge @ 275.00
MEHU 20 @ 4.40 88.00

CHARGE TO: Palomino Petroleum
 STREET _____
 CITY _____ STATE _____ ZIP _____

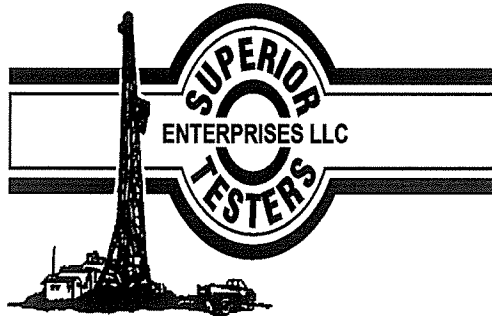
TOTAL 2029.25

To: Allied Oil & Gas Services, LLC.
 You are hereby requested to rent cementing equipment and furnish cementer and helper(s) to assist owner or contractor to do work as is listed. The above work was done to satisfaction and supervision of owner agent or contractor. I have read and understand the "GENERAL TERMS AND CONDITIONS" listed on the reverse side.

PLUG & FLOAT EQUIPMENT
 _____ @ _____
 _____ @ _____
 _____ @ _____
 _____ @ _____
 TOTAL _____

PRINTED NAME JAMES SHULTZ
 SIGNATURE [Signature]

SALES TAX (If Any) 265.80
 TOTAL CHARGES 6,302.71
 DISCOUNT 1449.62 IF PAID IN 30 DAYS
4853.09
2370



DRILL STEM TEST REPORT

Prepared For: **Palomino Petroleum Inc.**

4924 South East 84th Street
Newton ,Kansas 67114

ATTN: Kevin Bailey

Stoll-Olivia
Stoll-Oliva #1

23-13s-33w

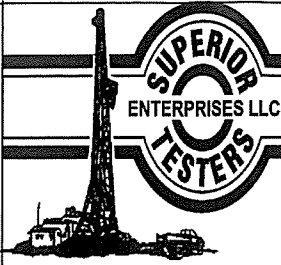
Start Date: 2013.01.17 @ 00:00:00

End Date: 2013.01.17 @ 00:00:00

Job Ticket #: 17775 DST #: 1

Superior Testers Enterprises LLC
PO Box 138 Great Bend KS 67530
1-800-792-6902

Printed: 2013.01.17 @ 06:15:44



DRILL STEM TEST REPORT

Palomino Petroleum Inc.
 4924 South East 84th Street
 Newton, Kansas 67114
 ATTN: Kevin Bailey

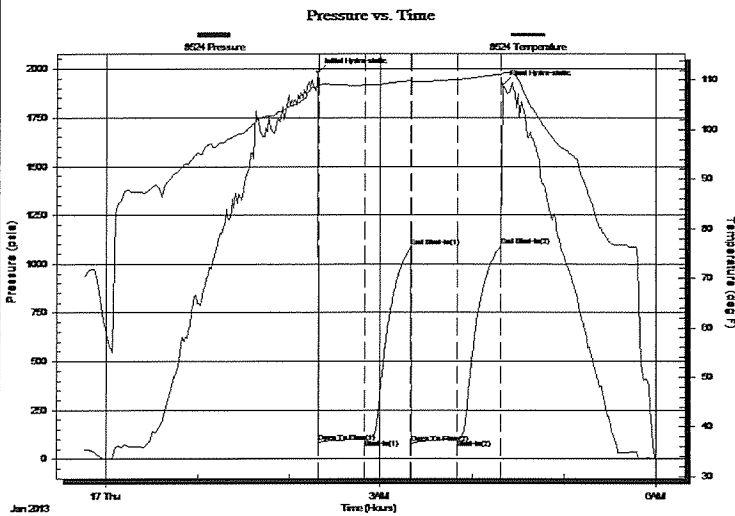
23-13s-33w
Stroll-Oliva #1
 Job Ticket: 17775 **DST#: 1**
 Test Start: 2013.01.17 @ 00:00:00

GENERAL INFORMATION:

Formation: **Kansas City "H"**
 Deviated: No Whipstock: ft (KB)
 Time Tool Opened: 00:00:00
 Time Test Ended: 00:00:00
 Interval: **4058.00 ft (KB) To 4100.00 ft (KB) (TVD)**
 Total Depth: 4100.00 ft (KB) (TVD)
 Hole Diameter: 7.88 inches Hole Condition: Fair
 Test Type: Conventional Bottom Hole (Initial)
 Tester: Gene Budig
 Unit No: 3335
 Reference Elevations: 2955.00 ft (KB)
 2945.00 ft (CF)
 KB to GR/CF: 10.00 ft

Serial #: 8524 Inside
 Press@RunDepth: 1090.89 psia @ 4096.00 ft (KB) Capacity: 5000.00 psia
 Start Date: 2013.01.16 End Date: 2013.01.17 Last Calib.: 2013.01.17
 Start Time: 23:45:00 End Time: 06:01:00 Time On Btm: 2013.01.17 @ 02:18:30
 Time Off Btm: 2013.01.17 @ 04:19:30

TEST COMMENT: 1st Opening 30 Minutes-Weak surface blow for 13 minutes and died
 1st Shut-In 30 Minutes-No blow back
 2nd Opening 30 Minutes-No blow
 2nd Shut-In 30 Minutes-No blow back



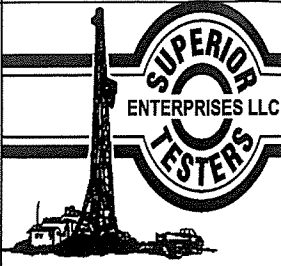
PRESSURE SUMMARY			
Time (Min.)	Pressure (psia)	Temp (deg F)	Annotation
0	1981.02	108.66	Initial Hydro-static
1	84.26	108.92	Open To Flow (1)
31	100.55	108.99	Shut-In(1)
61	1083.99	109.87	End Shut-In(1)
62	77.83	109.66	Open To Flow (2)
92	101.49	110.13	Shut-In(2)
120	1090.89	111.15	End Shut-In(2)
121	1918.69	111.33	Final Hydro-static

Recovery

Length (ft)	Description	Volume (bbl)
10.00	Drilling Mud	0.14

Gas Rates

Choke (inches)	Pressure (psia)	Gas Rate (Mcf/d)



DRILL STEM TEST REPORT

TOOL DIAGRAM

Palomino Petroleum Inc.

23-13s-33w

4924 South East 84th Street
Newton, Kansas 67114

Stroll-Oliva #1

Job Ticket: 17775

DST#: 1

ATTN: Kevin Bailey

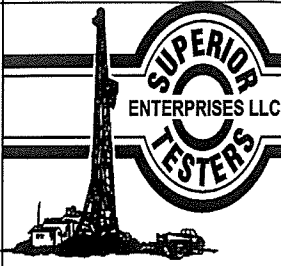
Test Start: 2013.01.17 @ 00:00:00

Tool Information

Drill Pipe:	Length: 4057.00 ft	Diameter: 3.80 inches	Volume: 56.91 bbl	Tool Weight: 2000.00 lb
Heavy Wt. Pipe:	Length: 0.00 ft	Diameter: 2.76 inches	Volume: 0.00 bbl	Weight set on Packer: 20000.00 lb
Drill Collar:	Length: 0.00 ft	Diameter: 2.25 inches	Volume: 0.00 bbl	Weight to Pull Loose: 58000.00 lb
			<u>Total Volume: 56.91 bbl</u>	Tool Chased 0.00 ft
Drill Pipe Above KB:	20.00 ft			String Weight: Initial 48000.00 lb
Depth to Top Packer:	4058.00 ft			Final 48000.00 lb
Depth to Bottom Packer:	ft			
Interval between Packers:	42.00 ft			
Tool Length:	63.00 ft			
Number of Packers:	2	Diameter: 6.75 inches		

Tool Comments:

Tool Description	Length (ft)	Serial No.	Position	Depth (ft)	Accum. Lengths
Change Over Sub	1.00			4038.00	
Shut-In Tool	5.00			4043.00	
Hydroic Tool	5.00			4048.00	
Packer	5.00			4053.00	21.00 Bottom Of Top Packer
Packer	5.00			4058.00	
Perforations	37.00			4095.00	
Recorder	1.00	8524	Inside	4096.00	
Recorder	1.00	6839	Outside	4097.00	
Bullnose	3.00			4100.00	42.00 Bottom Packers & Anchor
Total Tool Length:	63.00				



DRILL STEM TEST REPORT

FLUID SUMMARY

Palomino Petroleum Inc.

23-13s-33w

4924 South East 84th Street
Newton, Kansas 67114

Stroll-Oliva #1

Job Ticket: 17775

DST#: 1

ATTN: Kevin Bailey

Test Start: 2013.01.17 @ 00:00:00

Mud and Cushion Information

Mud Type: Gel Chem
Mud Weight: 9.00 lb/gal
Viscosity: 57.00 sec/qt
Water Loss: 7.20 in³
Resistivity: ohm.m
Salinity: 2500.00 ppm
Filter Cake: 0.00 inches

Cushion Type:
Cushion Length: ft
Cushion Volume: bbl
Gas Cushion Type:
Gas Cushion Pressure: psia

Oil API: deg API
Water Salinity: ppm

Recovery Information

Recovery Table

Length ft	Description	Volume bbl
10.00	Drilling Mud	0.140

Total Length: 10.00 ft Total Volume: 0.140 bbl

Num Fluid Samples: 0 Num Gas Bombs: 0 Serial #:

Laboratory Name: Laboratory Location:

Recovery Comments:

Serial #: 8524

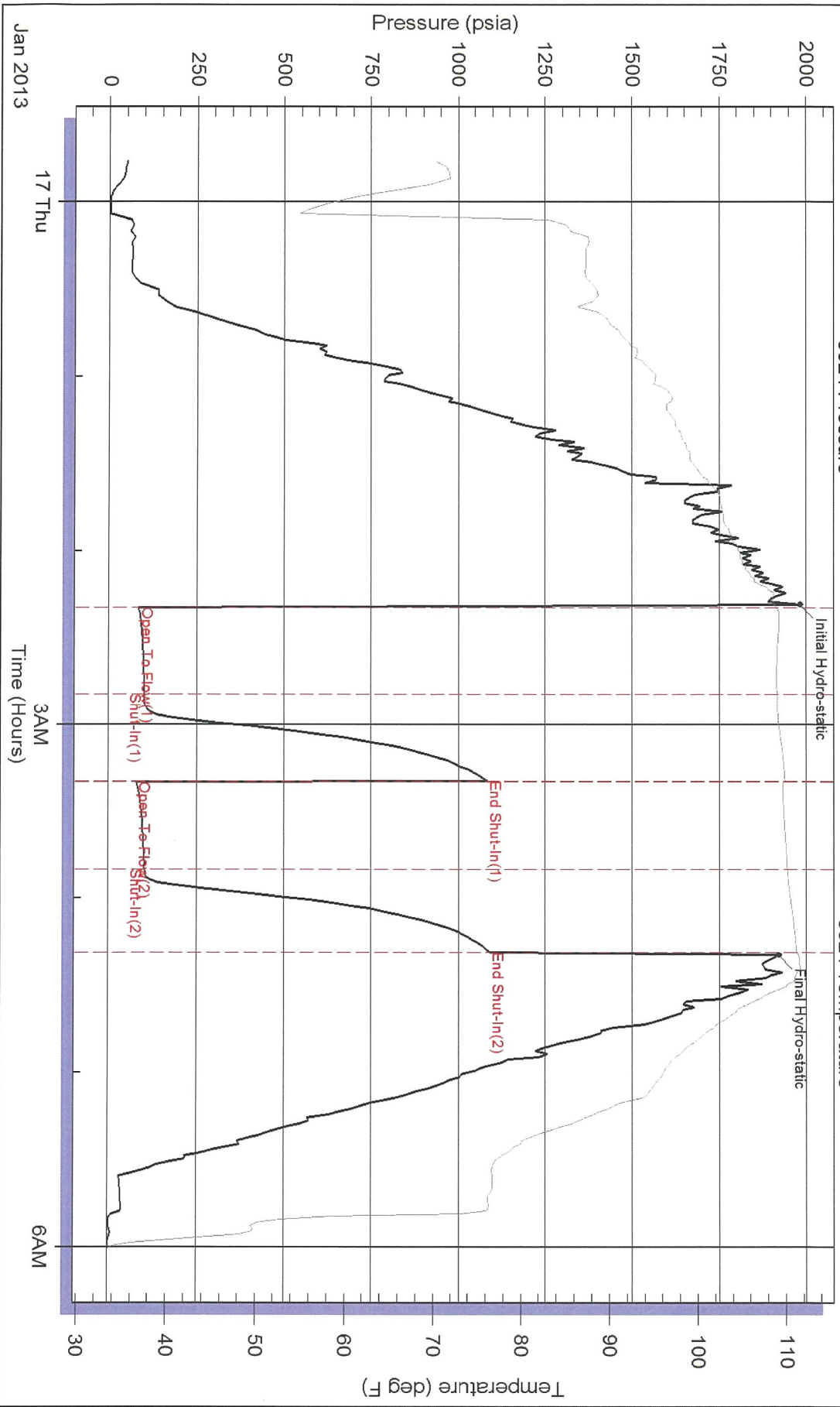
Inside

Palomino Petroleum Inc.

Stroll-Oliva #1

DST Test Number: 1

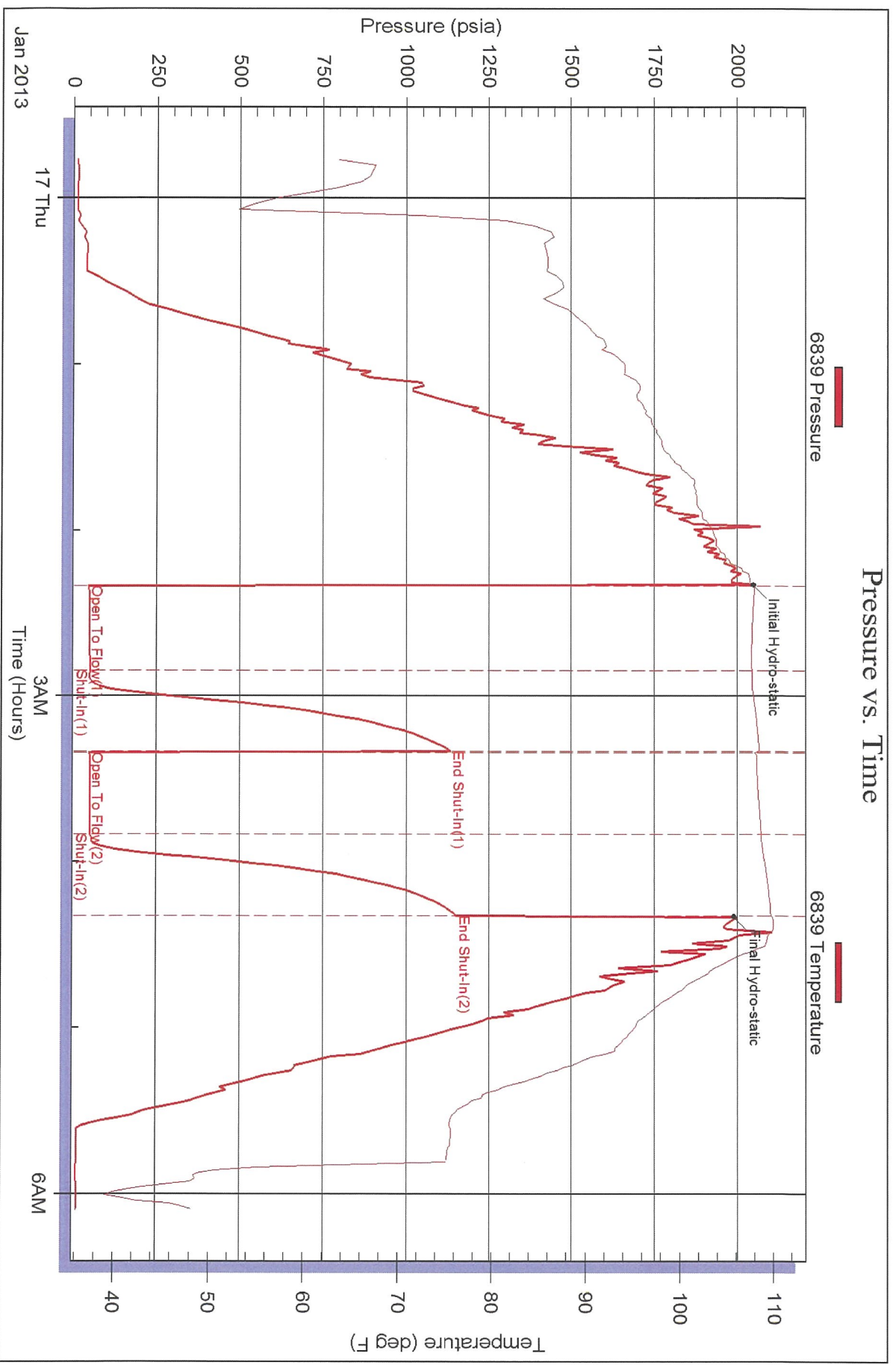
Pressure vs. Time

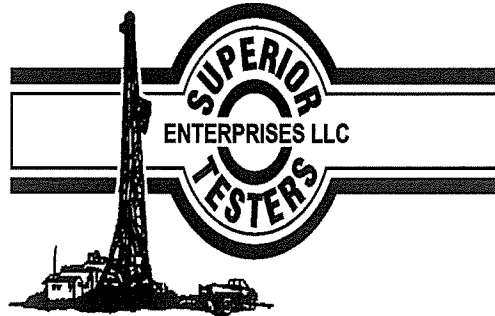


Superior Testers Enterprises LLC

Ref. No: 17775

Printed: 2013.01.17 @ 06:15:45





DRILL STEM TEST REPORT

Prepared For: **Palomino Petroleum Inc.**

4924 South East 84th Street
Newton ,Kansas 67114

ATTN: Kevin Bailey

Stoll-Olivia
~~Stoll-Olivia~~ #1

23-13s-33w

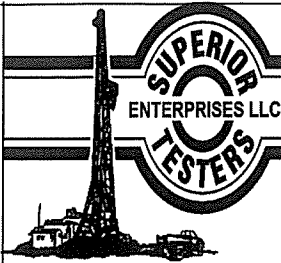
Start Date: 2013.01.18 @ 00:00:00

End Date: 2013.01.18 @ 00:00:00

Job Ticket #: 16951 DST #: 2

Superior Testers Enterprises LLC
PO Box 138 Great Bend KS 67530
1-800-792-6902

Printed: 2013.01.18 @ 03:23:52



DRILL STEM TEST REPORT

Palomino Petroleum Inc.
 4924 South East 84th Street
 New ton ,Kansas 67114
 ATTN: Kevin Bailey

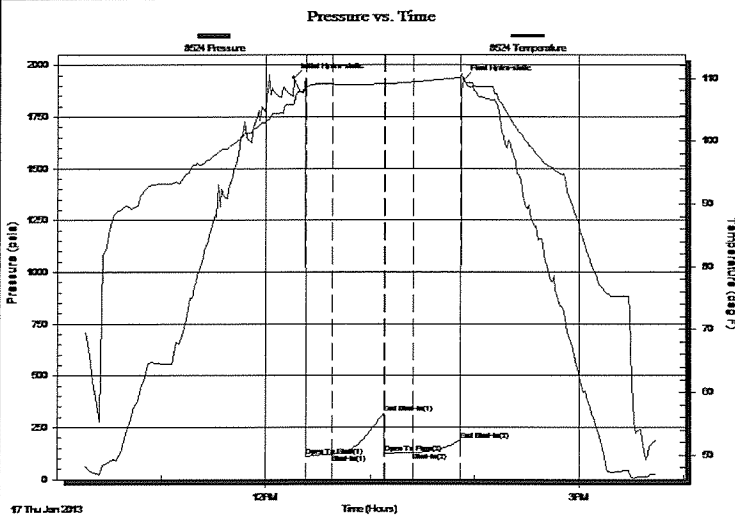
23-13s-33w
Stroll-Oliva #1
 Job Ticket: 16951 **DST#: 2**
 Test Start: 2013.01.18 @ 00:00:00

GENERAL INFORMATION:

Formation: **Kansas City "I & J"**
 Deviated: No Whipstock: ft (KB)
 Time Tool Opened: 00:00:00
 Time Test Ended: 00:00:00
 Test Type: Conventional Bottom Hole (Initial)
 Tester: Gene Budig
 Unit No: 3335
 Interval: **4100.00 ft (KB) To 4170.00 ft (KB) (TVD)**
 Total Depth: 4170.00 ft (KB) (TVD)
 Reference Elevations: 2955.00 ft (KB)
 2945.00 ft (CF)
 Hole Diameter: 7.88 inches Hole Condition: Fair
 KB to GR/CF: 10.00 ft

Serial #: 8524 Inside
 Press@RunDepth: 188.51 psia @ 4175.51 ft (KB) Capacity: 5000.00 psia
 Start Date: 2013.01.17 End Date: 2013.01.17 Last Calib.: 2013.01.18
 Start Time: 10:15:00 End Time: 15:44:30 Time On Btm: 2013.01.17 @ 12:16:00
 Time Off Btm: 2013.01.17 @ 13:53:30

TEST COMMENT: 1st Opening 15 Minutes weak blow for 3 minutes and died
 1st Shut-In 30 Minutes-No blow backi
 2nd Opening 15 Minutes-No blow
 2nd Shut-In 30 Minutes-No blow back



PRESSURE SUMMARY

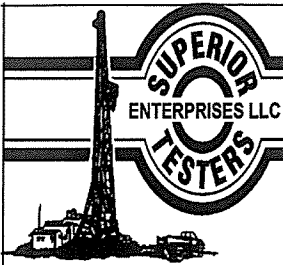
Time (Min.)	Pressure (psia)	Temp (deg F)	Annotation
0	1939.08	106.02	Initial Hydro-static
7	108.72	108.34	Open To Flow (1)
22	121.45	109.06	Shut-In(1)
52	315.85	109.14	End Shut-In(1)
52	125.58	109.13	Open To Flow (2)
69	128.90	109.42	Shut-In(2)
96	188.51	110.13	End Shut-In(2)
98	1930.17	109.44	Final Hydro-static

Recovery

Length (ft)	Description	Volume (bbl)
2.00	Drilling Mud	0.03

Gas Rates

Choke (inches)	Pressure (psia)	Gas Rate (Mcf/d)



DRILL STEM TEST REPORT

TOOL DIAGRAM

Palomino Petroleum Inc.

23-13s-33w

4924 South East 84th Street
Newton, Kansas 67114

Stroll-Oliva #1

Job Ticket: 16951

DST#: 2

ATTN: Kevin Bailey

Test Start: 2013.01.18 @ 00:00:00

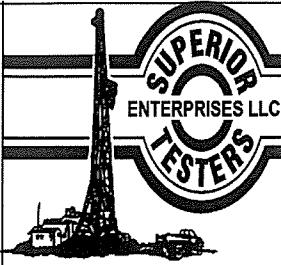
Tool Information

Drill Pipe:	Length: 4080.00 ft	Diameter: 3.80 inches	Volume: 57.23 bbl	Tool Weight: 2000.00 lb
Heavy Wt. Pipe:	Length: 0.00 ft	Diameter: 2.86 inches	Volume: 0.00 bbl	Weight set on Packer: 20000.00 lb
Drill Collar:	Length: 0.00 ft	Diameter: 2.25 inches	Volume: 0.00 bbl	Weight to Pull Loose: 54000.00 lb
			<u>Total Volume: 57.23 bbl</u>	Tool Chased 0.00 ft
Drill Pipe Above KB:	9.00 ft			String Weight: Initial 48000.00 lb
Depth to Top Packer:	4100.00 ft			Final 48000.00 lb
Depth to Bottom Packer:	ft			
Interval between Packers:	79.51 ft			
Tool Length:	108.51 ft			
Number of Packers:	2	Diameter: 6.75 inches		

Tool Comments:

Tool Description	Length (ft)	Serial No.	Position	Depth (ft)	Accum. Lengths
Change Over Sub	1.00			4072.00	
Shut-In Tool	5.00			4077.00	
Hydroic Tool	5.00			4082.00	
Jars	6.00			4088.00	
Safety Joint	2.00			4090.00	
Packer	5.00			4095.00	29.00 Bottom Of Top Packer
Packer	5.00			4100.00	
Perforations	5.00			4105.00	
Change Over Sub	0.75			4105.75	
Drill Pipe	32.01			4137.76	
Change Over Sub	0.75			4138.51	
Perforations	36.00			4174.51	
Recorder	1.00	8524	Inside	4175.51	
Recorder	1.00	6839	Outside	4176.51	
Bullnose	3.00			4179.51	79.51 Bottom Packers & Anchor

Total Tool Length: 108.51



DRILL STEM TEST REPORT

FLUID SUMMARY

Palomino Petroleum Inc.

23-13s-33w

4924 South East 84th Street
New ton ,Kansas 67114

Stroll-Oliva #1

Job Ticket: 16951

DST#: 2

ATTN: Kevin Bailey

Test Start: 2013.01.18 @ 00:00:00

Mud and Cushion Information

Mud Type: Gel Chem

Mud Weight: 9.00 lb/gal

Viscosity: 70.00 sec/qt

Water Loss: 6.40 in³

Resistivity: ohm.m

Salinity: 9000.00 ppm

Filter Cake: 1.00 inches

Cushion Type:

Cushion Length: ft

Cushion Volume: bbl

Gas Cushion Type:

Gas Cushion Pressure: psia

Oil API:

Water Salinity: ppm

deg API

Recovery Information

Recovery Table

Length ft	Description	Volume bbl
2.00	Drilling Mud	0.028

Total Length: 2.00 ft Total Volume: 0.028 bbl

Num Fluid Samples: 0

Num Gas Bombs: 0

Serial #:

Laboratory Name:

Laboratory Location:

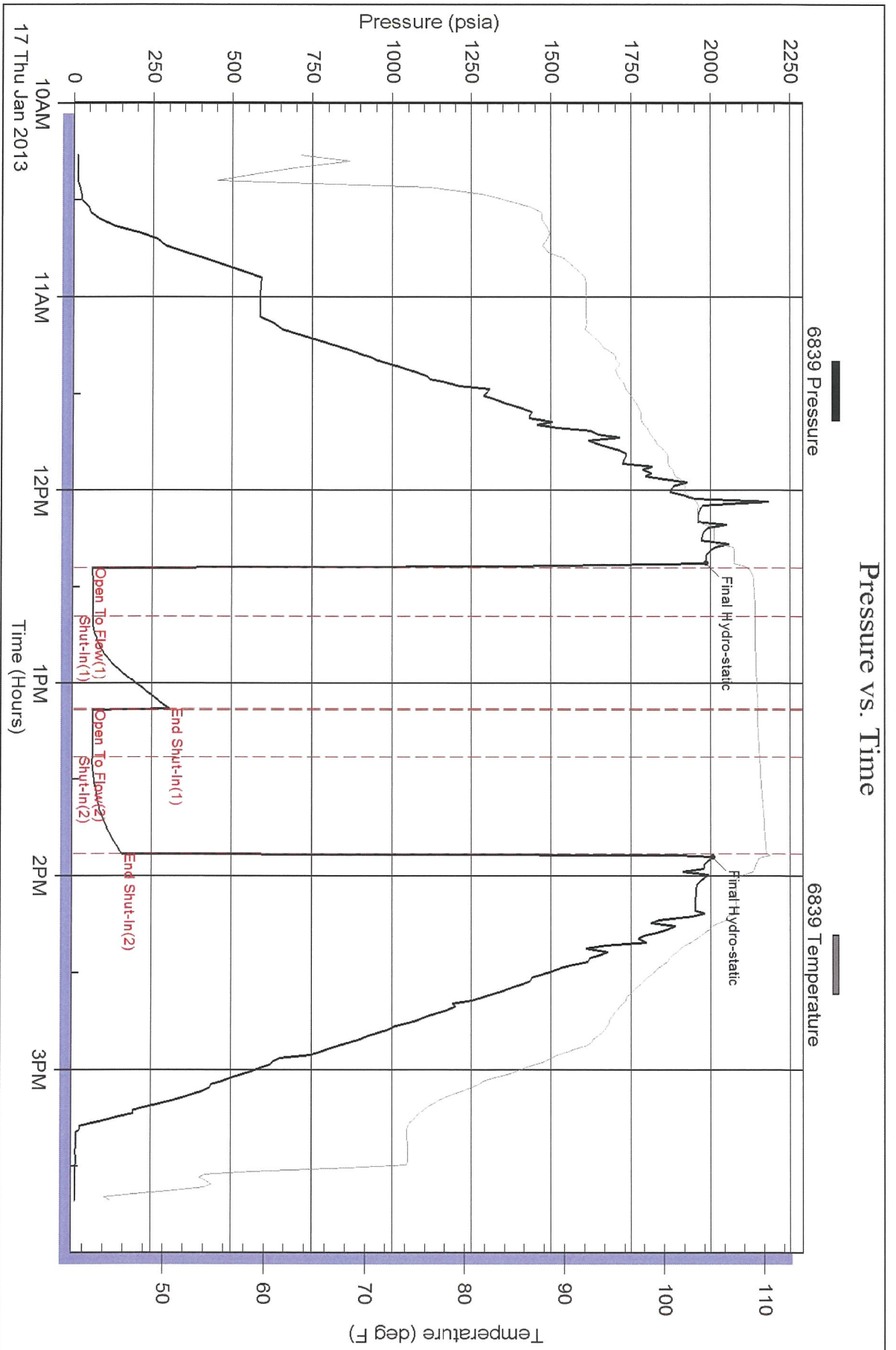
Recovery Comments:

Serial #: 6839

Outside Palomino Petroleum Inc.

Stroll-Oliva #1

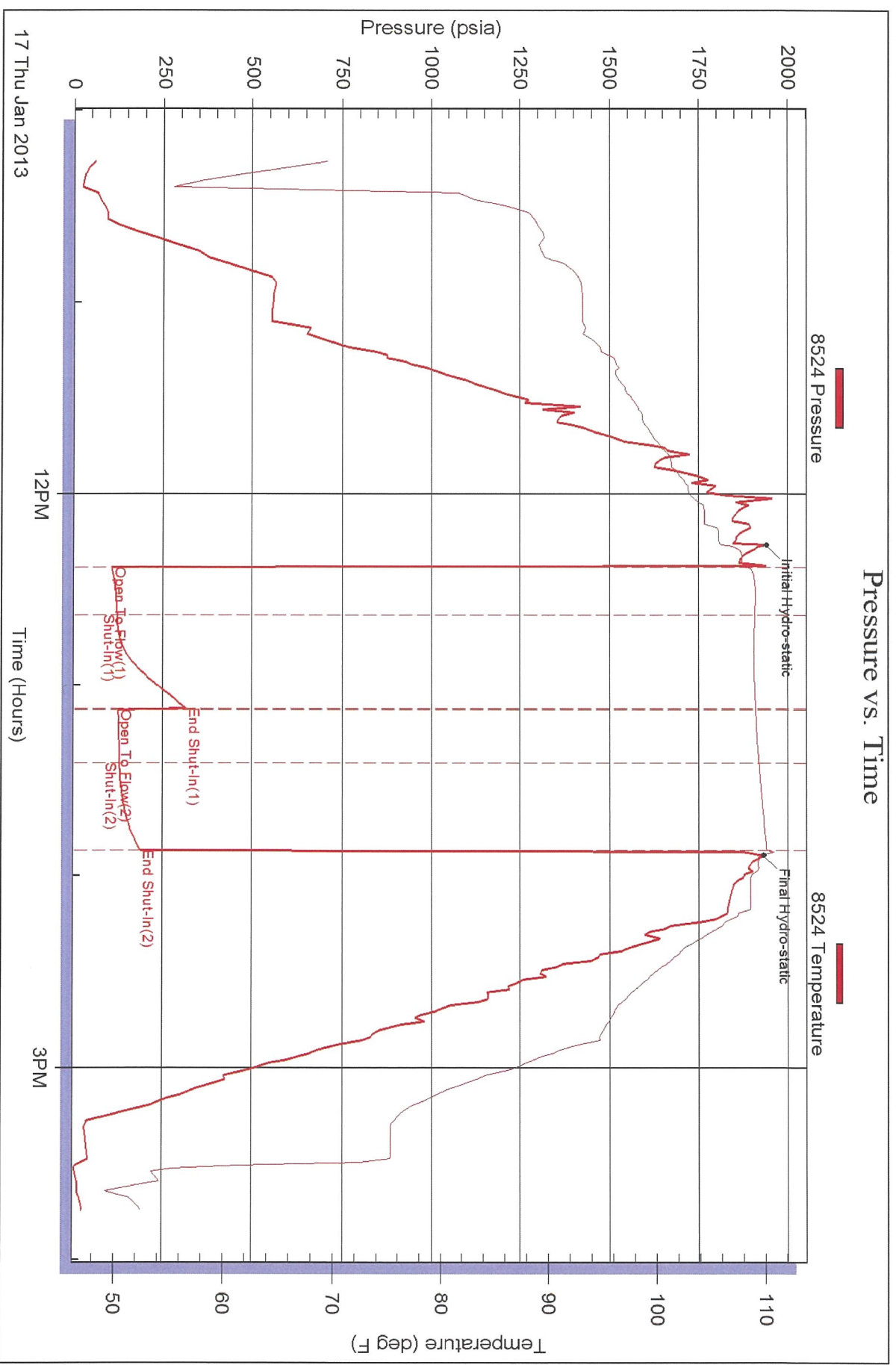
DST Test Number: 2

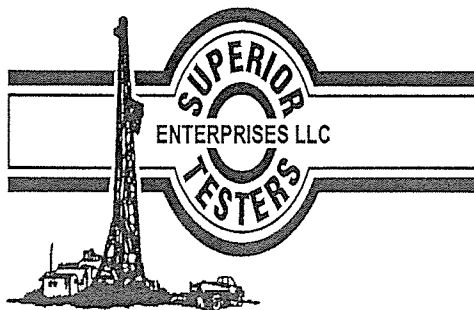


Superior Testers Enterprises LLC

Ref. No: 16951

Printed: 2013.01.18 @ 03:23:53





DRILL STEM TEST REPORT

Prepared For: **Palomino Petroleum Inc.**

4924 South East 84th Street
Newton, Kansas 67114

ATTN: Kevin Bailey
Stoll-Oliva
~~Stoll~~-Oliva #1

23-13s-33w

Start Date: 2013.01.18 @ 00:00:00

End Date: 2013.01.18 @ 00:00:00

Job Ticket #: 16952 DST #: 3

Superior Testers Enterprises LLC
PO Box 138 Great Bend KS 67530
1-800-792-6902

Printed: 2013.01.21 @ 16:05:26

Palomino Petroleum Inc.

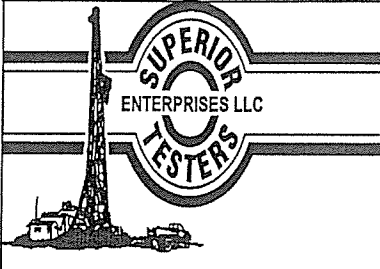
23-13s-33w

Stoll-Oliva #1

DST # 3

Kansas City "K"

2013.01.18



DRILL STEM TEST REPORT

TOOL DIAGRAM

Palomino Petroleum Inc.
 4924 South East 84th Street
 Newton, Kansas 67114
 ATTN: Kevin Bailey

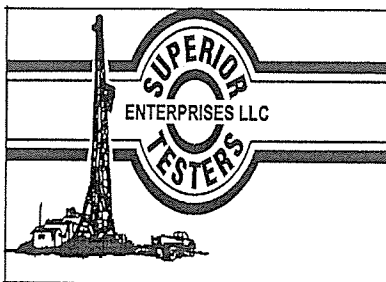
23-13s-33w
Stroll-Oliva #1
 Job Ticket: 16952 DST#: 3
 Test Start: 2013.01.18 @ 00:00:00

Tool Information

Drill Pipe:	Length: 4142.00 ft	Diameter: 3.80 inches	Volume: 58.10 bbl	Tool Weight: 2000.00 lb
Heavy Wt. Pipe:	Length: 0.00 ft	Diameter: 2.86 inches	Volume: 0.00 bbl	Weight set on Packer: 20000.00 lb
Drill Collar:	Length: 0.00 ft	Diameter: 2.25 inches	Volume: 0.00 bbl	Weight to Pull Loose: 55000.00 lb
			<u>Total Volume: 58.10 bbl</u>	Tool Chased 0.00 ft
Drill Pipe Above KB:	21.00 ft			String Weight: Initial 50000.00 lb
Depth to Top Packer:	4150.00 ft			Final 50000.00 lb
Depth to Bottom Packer:	ft			
Interval between Packers:	40.00 ft			
Tool Length:	69.00 ft			
Number of Packers:	2	Diameter: 6.75 inches		

Tool Comments:

Tool Description	Length (ft)	Serial No.	Position	Depth (ft)	Accum. Lengths
Change Over Sub	1.00			4122.00	
Shut-In Tool	5.00			4127.00	
Hydroic Tool	5.00			4132.00	
Jars	6.00			4138.00	
Safety Joint	2.00			4140.00	
Packer	5.00			4145.00	29.00 Bottom Of Top Packer
Packer	5.00			4150.00	
Perforations	35.00			4185.00	
Recorder	1.00	8524	Inside	4186.00	
Recorder	1.00	6539	Outside	4187.00	
Bullnose	3.00			4190.00	40.00 Bottom Packers & Anchor
Total Tool Length:	69.00				



DRILL STEM TEST REPORT

FLUID SUMMARY

Palomino Petroleum Inc.
 4924 South East 84th Street
 Newton, Kansas 67114
 ATTN: Kevin Bailey

23-13s-33w
Stroll-Oliva #1
 Job Ticket: 16952 DST#: 3
 Test Start: 2013.01.18 @ 00:00:00

Mud and Cushion Information

Mud Type: Gel Chem	Cushion Type:	Oil API:	deg API
Mud Weight: 9.00 lb/gal	Cushion Length: ft	Water Salinity:	ppm
Viscosity: 58.00 sec/qt	Cushion Volume: bbl		
Water Loss: 6.39 in ³	Gas Cushion Type:		
Resistivity: ohm.m	Gas Cushion Pressure: psia		
Salinity: 7000.00 ppm			
Filter Cake: 1.00 inches			

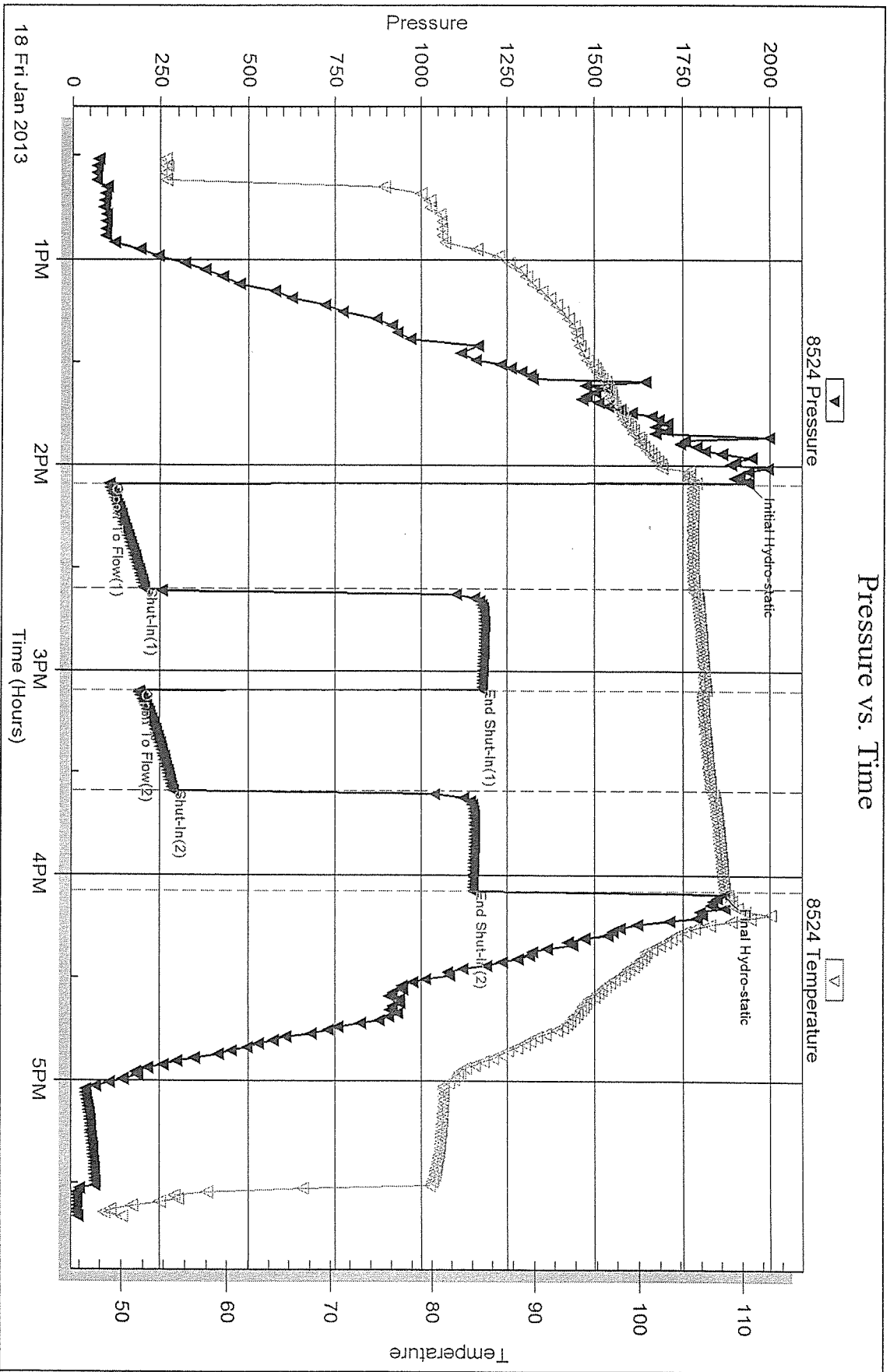
Recovery Information

Recovery Table

Length ft	Description	Volume bbl
60.00	Gas in the pipe	0.842
5.00	Clean Oil	0.070
40.00	Slightly Oil and Gas cut Muddy Water	0.561
0.00	5%Gas 5%Oil 55%Mud 35%Water	0.000
60.00	Slightly oil and gasw cut muddy w ater	0.842
0.00	5%Gas 5%Oil 50%Mud 40%Water	0.000
120.00	Muddy water w iht a show of oil and gas	1.683
0.00	5%Gas 1%Oil 15%Mud 78%Water	0.000
180.00	1%Gas 1%Oil 4%Mud 94%Wate0	2.525
0.00	Chlorides 36,000	0.000

Total Length: 465.00 ft Total Volume: 6.523 bbl
 Num Fluid Samples: 0 Num Gas Bombs: 0 Serial #:
 Laboratory Name: Laboratory Location:
 Recovery Comments:

Pressure vs. Time

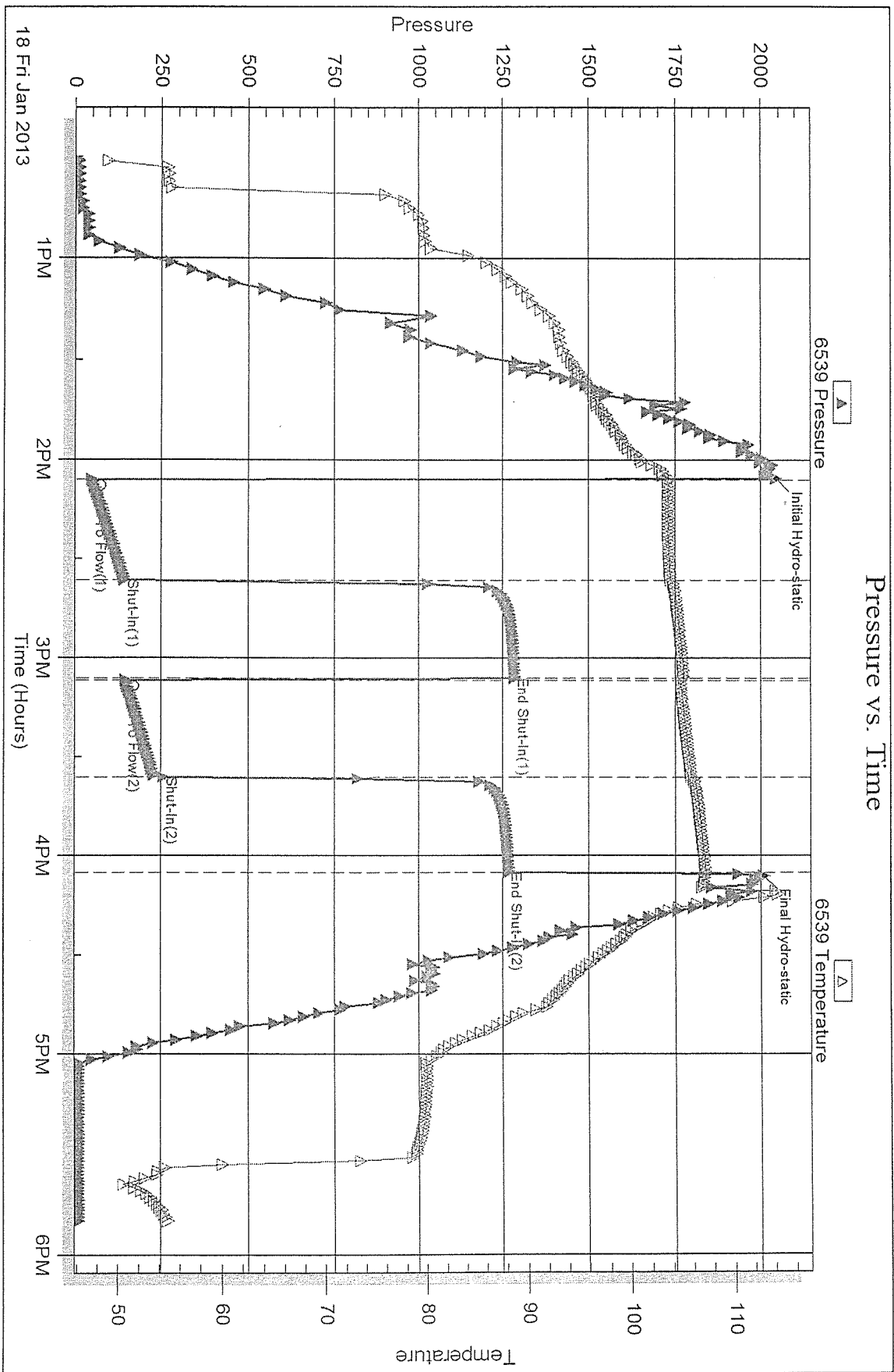


Serial #: 6539

Outside Palomino Petroleum Inc.

Stroll-Oliva #1

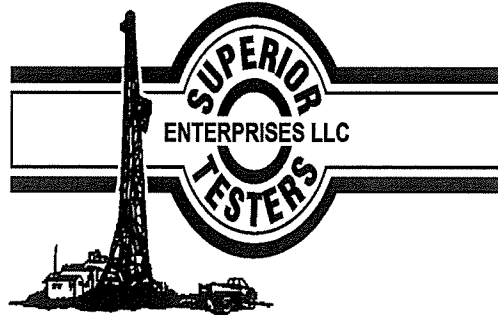
DST Test Number: 3



Superior Testers Enterprises LLC

Ref. No: 16952

Printed: 2013.01.21 @ 16:05:27



DRILL STEM TEST REPORT

Prepared For: **Palomino Petroleum Inc.**

4924 South East 84th Street
Newton ,Kansas 67114

ATTN: Kevin Bailey

Stoll-Oliva
~~Stroll~~-Oliva #1

23-13s-33w

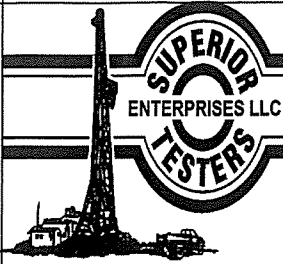
Start Date: 2013.01.20 @ 00:00:00

End Date: 2013.01.20 @ 00:00:00

Job Ticket #: 16953 DST #: 4

Superior Testers Enterprises LLC
PO Box 138 Great Bend KS 67530
1-800-792-6902

Printed: 2013.01.20 @ 19:20:11



DRILL STEM TEST REPORT

Palomino Petroleum Inc.
 4924 South East 84th Street
 Newton, Kansas 67114
 ATTN: Kevin Bailey

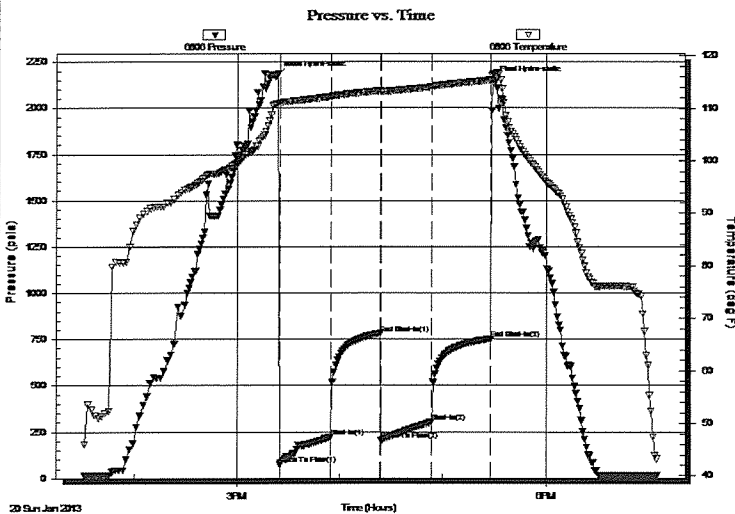
23-13s-33w
Stroll-Oliva #1
 Job Ticket: 16953 **DST#: 4**
 Test Start: 2013.01.20 @ 00:00:00

GENERAL INFORMATION:

Formation: **Johnson**
 Deviated: No Whipstock: ft (KB)
 Time Tool Opened: 00:00:00
 Time Test Ended: 00:00:00
 Test Type: Conventional Bottom Hole (Initial)
 Tester: Gene Budig
 Unit No: 3335
 Interval: **4480.00 ft (KB) To 4525.00 ft (KB) (TVD)**
 Total Depth: 4525.00 ft (KB) (TVD)
 Hole Diameter: 7.88 inches Hole Condition: Fair
 Reference Elevations: 2955.00 ft (KB)
 2945.00 ft (CF)
 KB to GR/CF: 10.00 ft

Serial #: 6806 **Inside**
 Press@RunDepth: 750.93 psia @ 4521.00 ft (KB) Capacity: 5000.00 psia
 Start Date: 2013.01.20 End Date: 2013.01.20 Last Calib.: 2013.01.20
 Start Time: 13:30:00 End Time: 19:05:00 Time On Btm: 2013.01.20 @ 15:22:30
 Time Off Btm: 2013.01.20 @ 17:29:00

TEST COMMENT: 1st Opening 30 Minutes-Fair blow built to the bottom of a 5 gallon bucket in 12 minutes
 1st Shut-In 30 Minutes-No blow back
 2nd Opening 30 Minutes=Fair blow built to the bottom of a 5 gallon bucket in 14 minutes
 2nd Shut-In 30 Minutes-No blow back



PRESSURE SUMMARY

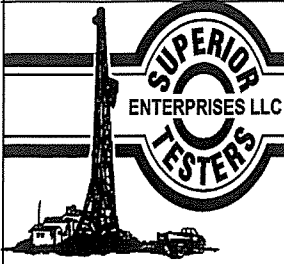
Time (Min.)	Pressure (psia)	Temp (deg F)	Annotation
0	2173.81	110.84	Initial Hydro-static
2	72.64	111.08	Open To Flow (1)
32	221.64	112.20	Shut-In(1)
61	781.20	113.31	End Shut-In(1)
62	204.03	113.18	Open To Flow (2)
91	302.91	114.06	Shut-In(2)
126	750.93	115.38	End Shut-In(2)
127	2146.14	116.49	Final Hydro-static

Recovery

Length (ft)	Description	Volume (bbl)
120.00	Muddy Water 40%Mud 60%Water	1.68
120.00	Slightly muddy Water 10%Mud 90%Water	1.68
360.00	Water 1%Mud 99%Water	5.05
0.00	Chlorides 48,000	0.00

Gas Rates

Choke (inches)	Pressure (psia)	Gas Rate (Mcf/d)



DRILL STEM TEST REPORT

Palomino Petroleum Inc.
 4924 South East 84th Street
 New ton ,Kansas 67114
 ATTN: Kevin Bailey

23-13s-33w
Stroll-Oliva #1
 Job Ticket: 16953 **DST#: 4**
 Test Start: 2013.01.20 @ 00:00:00

GENERAL INFORMATION:

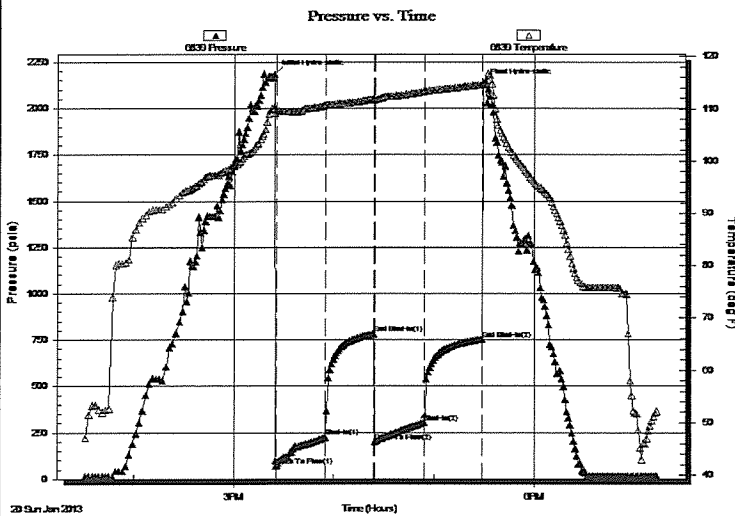
Formation: **Johnson**
 Deviated: No Whipstock: ft (KB)
 Time Tool Opened: 00:00:00
 Time Test Ended: 00:00:00
 Test Type: Conventional Bottom Hole (Initial)
 Tester: Gene Budig
 Unit No: 3335
 Interval: **4480.00 ft (KB) To 4525.00 ft (KB) (TVD)**
 Total Depth: 4525.00 ft (KB) (TVD)
 Reference Elevations: 2955.00 ft (KB)
 Hole Diameter: 7.88 inches Hole Condition: Fair
 2945.00 ft (CF)
 KB to GR/CF: 10.00 ft

Serial #: 6839

Outside

Press@RunDepth: 753.11 psia @ 4522.00 ft (KB) Capacity: 5000.00 psia
 Start Date: 2013.01.20 End Date: 2013.01.20 Last Calib.: 2013.01.20
 Start Time: 13:30:00 End Time: 19:13:30 Time On Btm: 2013.01.20 @ 15:24:00
 Time Off Btm: 2013.01.20 @ 17:29:00

TEST COMMENT: 1st Opening 30 Minutes-Fair blow built to the bottom of a 5 gallon bucket in 12 minutes
 1st Shut-In 30 Minutes-No blow back
 2nd Opening 30 Minutes=Fair blow built to the bottom of a 5 gallon bucket in 14 minutes
 2nd Shut-In 30 Minutes-No blow back



PRESSURE SUMMARY

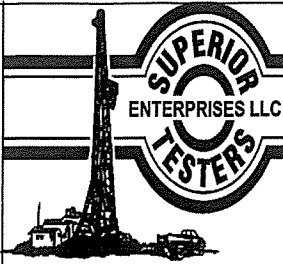
Time (Min.)	Pressure (psia)	Temp (deg F)	Annotation
0	2185.44	110.23	Initial Hydro-static
1	69.24	109.76	Open To Flow (1)
31	223.62	110.69	Shut-In(1)
60	781.38	111.82	End Shut-In(1)
61	201.88	111.71	Open To Flow (2)
90	304.21	113.32	Shut-In(2)
125	753.11	114.58	End Shut-In(2)
125	2137.27	114.78	Final Hydro-static

Recovery

Length (ft)	Description	Volume (bbl)
120.00	Muddy Water 40%Mud 60%Water	1.68
120.00	Slightly muddy Water 10%Mud 90%Water	1.68
360.00	Water 1%Mud 99%Water	5.05
0.00	Chlorides 48,000	0.00

Gas Rates

Choke (inches)	Pressure (psia)	Gas Rate (Mcf/d)



DRILL STEM TEST REPORT

TOOL DIAGRAM

Palomino Petroleum Inc.
 4924 South East 84th Street
 Newton, Kansas 67114
 ATTN: Kevin Bailey

23-13s-33w
Stroll-Oliva #1
 Job Ticket: 16953 **DST#: 4**
 Test Start: 2013.01.20 @ 00:00:00

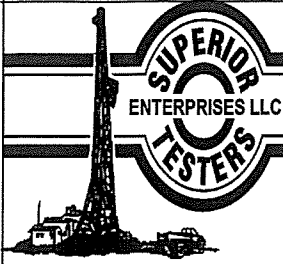
Tool Information

Drill Pipe:	Length: 4454.00 ft	Diameter: 3.80 inches	Volume: 62.48 bbl	Tool Weight: 2000.00 lb
Heavy Wt. Pipe:	Length: 0.00 ft	Diameter: 2.86 inches	Volume: 0.00 bbl	Weight set on Packer: 20000.00 lb
Drill Collar:	Length: 0.00 ft	Diameter: 2.25 inches	Volume: 0.00 bbl	Weight to Pull Loose: 78000.00 lb
		Total Volume: 62.48 bbl		Tool Chased 0.00 ft
Drill Pipe Above KB:	3.00 ft			String Weight: Initial 55000.00 lb
Depth to Top Packer:	4480.00 ft			Final 58000.00 lb
Depth to Bottom Packer:	ft			
Interval between Packers:	45.00 ft			
Tool Length:	74.00 ft			
Number of Packers:	2	Diameter: 6.75 inches		

Tool Comments:

Tool Description	Length (ft)	Serial No.	Position	Depth (ft)	Accum. Lengths
Change Over Sub	1.00			4452.00	
Shut-In Tool	5.00			4457.00	
Hydroic Tool	5.00			4462.00	
Jars	6.00			4468.00	
Safety Joint	2.00			4470.00	
Packer	5.00			4475.00	29.00 Bottom Of Top Packer
Packer	5.00			4480.00	
Perforations	40.00			4520.00	
Recorder	1.00	6806	Inside	4521.00	
Recorder	1.00	6839	Outside	4522.00	
Bullnose	3.00			4525.00	45.00 Bottom Packers & Anchor

Total Tool Length: 74.00



DRILL STEM TEST REPORT

FLUID SUMMARY

Palomino Petroleum Inc.

23-13s-33w

4924 South East 84th Street
New ton ,Kansas 67114

Stroll-Oliva #1

Job Ticket: 16953

DST#: 4

ATTN: Kevin Bailey

Test Start: 2013.01.20 @ 00:00:00

Mud and Cushion Information

Mud Type: Gel Chem

Mud Weight: 9.00 lb/gal

Viscosity: 45.00 sec/qt

Water Loss: 4.60 in³

Resistivity: ohm.m

Salinity: ppm

Filter Cake: 1.00 inches

Cushion Type:

Cushion Length: ft

Cushion Volume: bbl

Gas Cushion Type:

Gas Cushion Pressure: psia

Oil API: deg API

Water Salinity: ppm

Recovery Information

Recovery Table

Length ft	Description	Volume bbl
120.00	Muddy Water 40%Mud 60%Water	1.683
120.00	Slightly muddy Water 10%Mud 90%Water	1.683
360.00	Water 1%Mud 99%Water	5.050
0.00	Chlorides 48,000	0.000

Total Length: 600.00 ft Total Volume: 8.416 bbl

Num Fluid Samples: 0

Num Gas Bombs: 0

Serial #:

Laboratory Name:

Laboratory Location:

Recovery Comments:

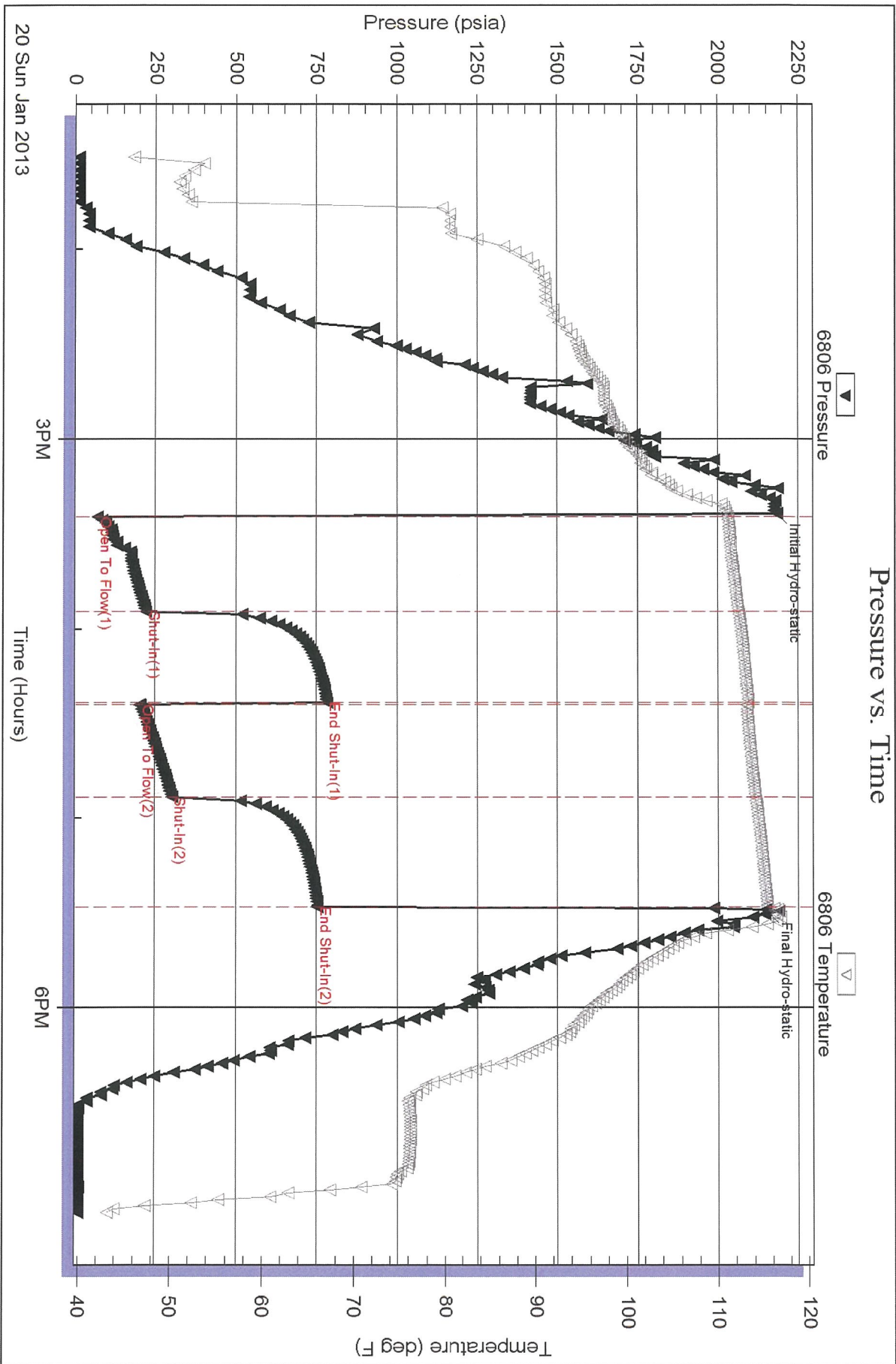
Serial #: 6806

Inside

Palomino Petroleum Inc.

Stroll-Oliva #1

DST Test Number: 4



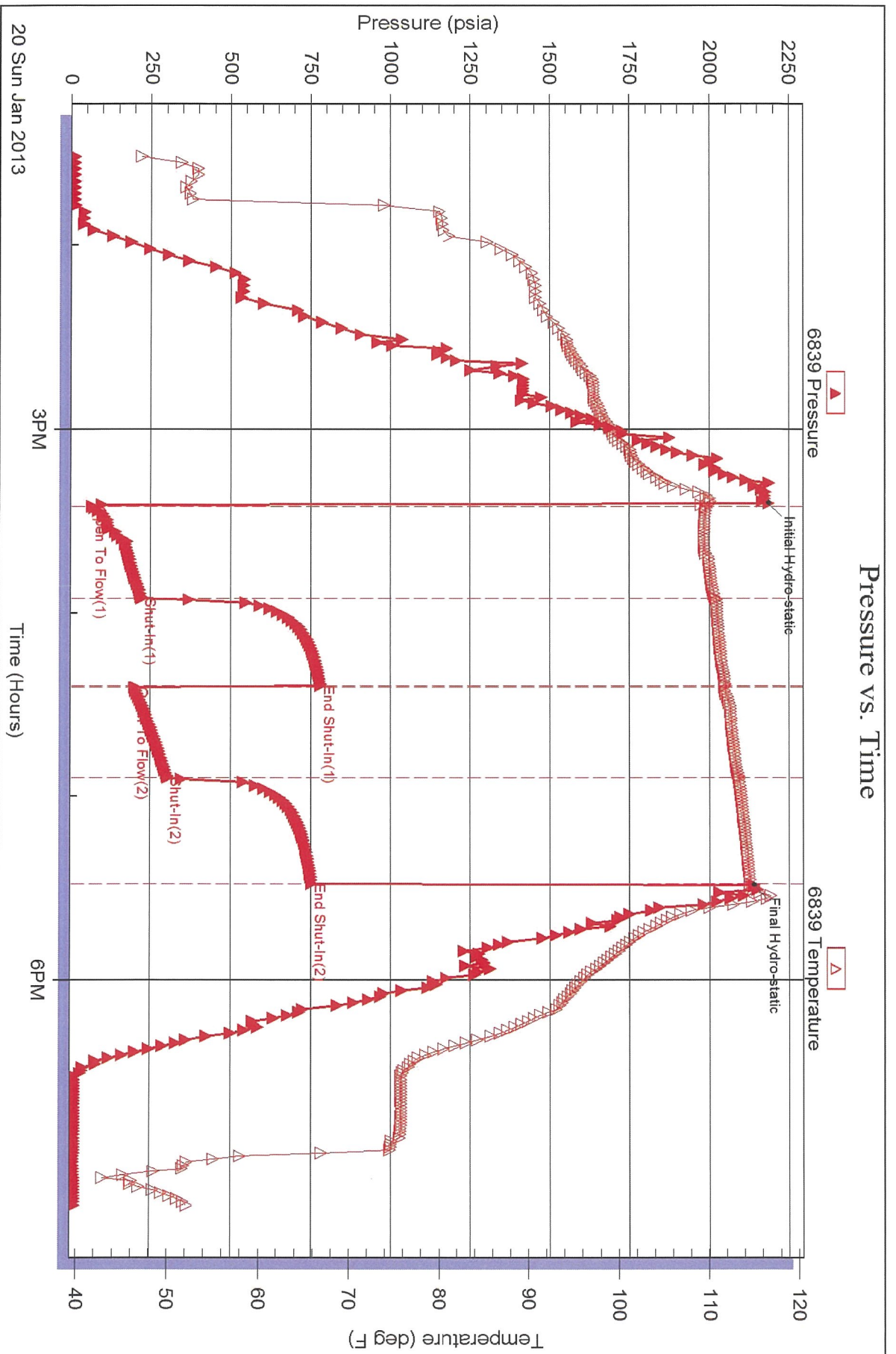
Serial #: 6839

Outside

Palomino Petroleum Inc.

Stroll-Oliva #1

DST Test Number: 4



Superior Testers Enterprises LLC

Ref. No: 16953

Printed: 2013.01.20 @ 19:20:13