



**TRILOBITE TESTING, INC**

# DRILL STEM TEST REPORT

Aaron Oil Co  
 1409 Washington Cir.  
 Hays KS 67601  
 ATTN: Herb Deines

**25 15s 19w Ellis**  
**Bieker 1-25**  
 Job Ticket: 51535      DST#: 1  
 Test Start: 2012.12.05 @ 04:15:00

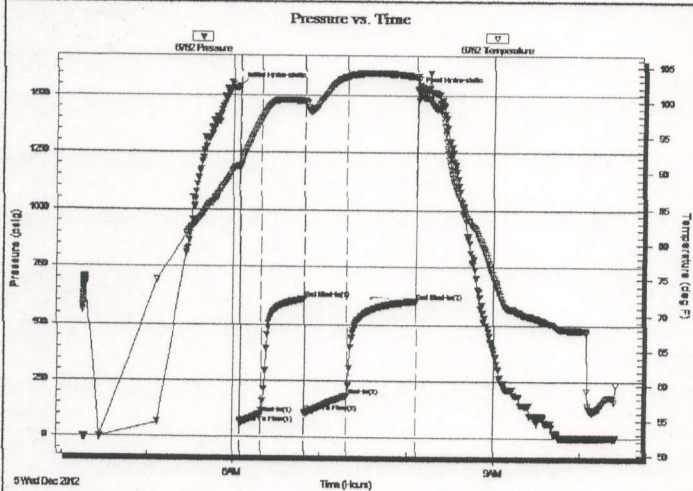
## GENERAL INFORMATION:

Formation: LKC "A - C"  
 Deviated: No Whipstock: 1978.00 ft (KB)  
 Time Tool Opened: 06:05:30  
 Time Test Ended: 10:25:00  
 Interval: 3248.00 ft (KB) To 3300.00 ft (KB) (TVD)  
 Total Depth: 3300.00 ft (KB) (TVD)  
 Hole Diameter: 7.88 inches Hole Condition: Fair

Test Type: Conventional Bottom Hole (Initial)  
 Tester: Jim Svaty  
 Unit No: 41  
 Reference Elevations: 1978.00 ft (KB)  
 1970.00 ft (CF)  
 KB to GR/CF: 8.00 ft

**Serial #: 6752**      Inside  
 Press@RunDepth: 181.93 psig @ 3263.00 ft (KB)      Capacity: 8000.00 psig  
 Start Date: 2012.12.05      End Date: 2012.12.05      Last Calib.: 2012.12.05  
 Start Time: 04:15:00      End Time: 10:25:00      Time On Btm: 2012.12.05 @ 06:04:40  
 Time Off Btm: 2012.12.05 @ 08:07:10

TEST COMMENT: 15-IFP- BOB in 2 1/2min.  
 30-ISIP- Surface Blow Building to 3 1/2in.  
 30-FFP- BOB in 30sec.  
 45-FSIP- BOB in 2 1/2min.



## PRESSURE SUMMARY

| Time (Min.) | Pressure (psig) | Temp (deg F) | Annotation           |
|-------------|-----------------|--------------|----------------------|
| 0           | 1539.31         | 90.85        | Initial Hydro-static |
| 1           | 60.20           | 90.77        | Open To Flow (1)     |
| 15          | 100.62          | 97.50        | Shut-In(1)           |
| 45          | 610.00          | 100.08       | End Shut-In(1)       |
| 46          | 108.76          | 99.98        | Open To Flow (2)     |
| 75          | 181.93          | 103.59       | Shut-In(2)           |
| 122         | 602.97          | 103.63       | End Shut-In(2)       |
| 123         | 1523.43         | 103.75       | Final Hydro-static   |

## Recovery

| Length (ft) | Description                 | Volume (bbl) |
|-------------|-----------------------------|--------------|
| 374.00      | Gassy MCO 10% m 40% o 50% g | 4.97         |
| 62.00       | Gassy OCM 30% o 30% m 40% g | 0.87         |
| 15.00       | OCM 20% o 80% m             | 0.21         |
| 0.00        | Gas to Surface              | 0.00         |
|             |                             |              |
|             |                             |              |

## Gas Rates

|  | Choke (inches) | Pressure (psig) | Gas Rate (Mcf/d) |
|--|----------------|-----------------|------------------|
|  |                |                 |                  |

Serial #: 6752

Inside

Aaron Oil Co

Bleker 1-25

DST Test Number: 1

### Pressure vs. Time

