



DRILL STEM TEST REPORT

Prepared For: **Murfin Drilling Co Inc**

250 N. Water Ste. 300
Wichita KS 67202-1216

ATTN: Scott Robinson

Schwind Unit #1-36

36-15s-19w Ellis,KS

Start Date: 2013.01.19 @ 15:40:18

End Date: 2013.01.19 @ 21:58:42

Job Ticket #: 51631 DST #: 1

Trilobite Testing, Inc

PO Box 362 Hays, KS 67601

ph: 785-625-4778 fax: 785-625-5620

Printed: 2013.01.24 @ 15:17:56



TRILOBITE TESTING, INC.

DRILL STEM TEST REPORT

Murfin Drilling Co Inc
 250 N.Water Ste. 300
 Wichita KS 67202-1216
 ATTN: Scott Robinson

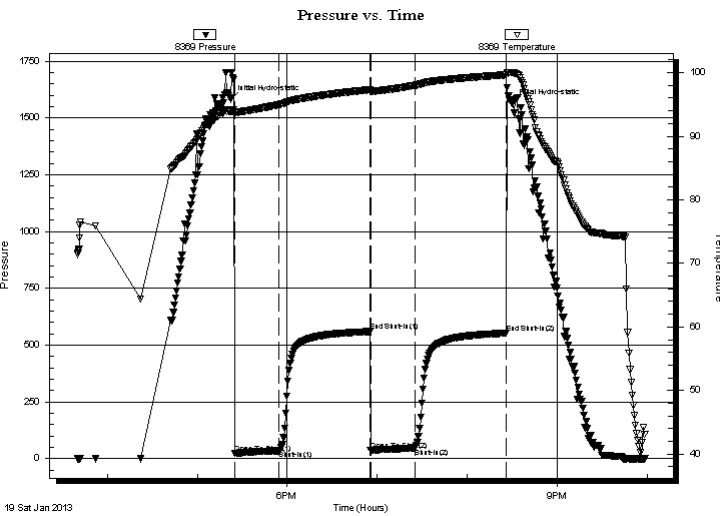
36-15s-19w Ellis,KS
Schwind Unit #1-36
 Job Ticket: 51631 **DST#: 1**
 Test Start: 2013.01.19 @ 15:40:18

GENERAL INFORMATION:

Formation: **LKC B-D**
 Deviated: No Whipstock: ft (KB)
 Test Type: Conventional Bottom Hole (Initial)
 Time Tool Opened: 17:24:58 Tester: Ray Schwager
 Time Test Ended: 21:58:42 Unit No: 42
 Interval: **3284.00 ft (KB) To 3335.00 ft (KB) (TVD)** Reference Elevations: 1989.00 ft (KB)
 Total Depth: 3335.00 ft (KB) (TVD) 1978.00 ft (CF)
 Hole Diameter: 7.88 inches Hole Condition: Fair KB to GR/CF: 11.00 ft

Serial #: 8369 Inside
 Press @ Run Depth: 47.90 psig @ 3300.00 ft (KB) Capacity: 8000.00 psig
 Start Date: 2013.01.19 End Date: 2013.01.19 Last Calib.: 2013.01.19
 Start Time: 15:40:18 End Time: 21:58:42 Time On Btm: 2013.01.19 @ 17:22:13
 Time Off Btm: 2013.01.19 @ 20:29:42

TEST COMMENT: 30-IFP-w k bl thru-out 1/8" bl
 60-ISIP-no bl
 30-FFP-no bl
 60-FSIP-no bl



PRESSURE SUMMARY

Time (Min.)	Pressure (psig)	Temp (deg F)	Annotation
0	1582.39	93.87	Initial Hydro-static
3	23.30	93.42	Open To Flow (1)
33	35.31	94.96	Shut-In(1)
93	559.84	97.32	End Shut-In(1)
94	37.15	97.11	Open To Flow (2)
124	47.90	98.00	Shut-In(2)
184	551.77	99.66	End Shut-In(2)
188	1563.66	100.02	Final Hydro-static

Recovery

Length (ft)	Description	Volume (bbl)
30.00	Mud	0.15

Gas Rates

Choke (inches)	Pressure (psig)	Gas Rate (Mcf/d)



TRILOBITE TESTING, INC.

DRILL STEM TEST REPORT

Murfin Drilling Co Inc
 250 N. Water Ste. 300
 Wichita KS 67202-1216
 ATTN: Scott Robinson

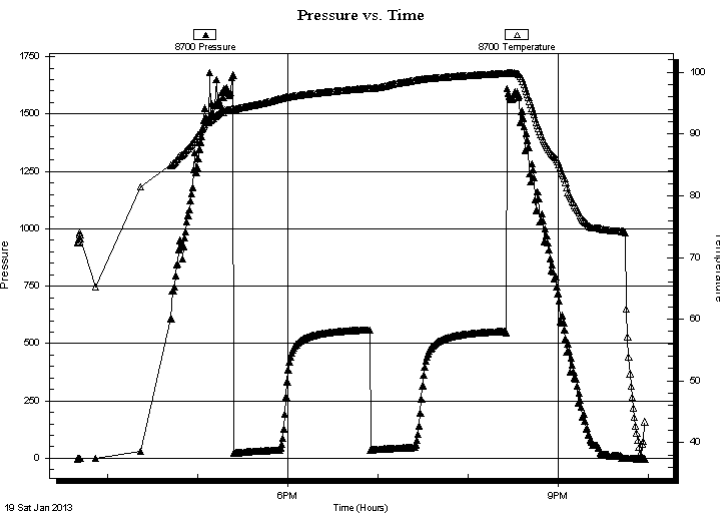
36-15s-19w Ellis, KS
Schwind Unit #1-36
 Job Ticket: 51631 **DST#: 1**
 Test Start: 2013.01.19 @ 15:40:18

GENERAL INFORMATION:

Formation: **LKC B-D**
 Deviated: No Whipstock: ft (KB)
 Time Tool Opened: 17:24:58
 Time Test Ended: 21:58:42
 Interval: **3284.00 ft (KB) To 3335.00 ft (KB) (TVD)**
 Total Depth: 3335.00 ft (KB) (TVD)
 Hole Diameter: 7.88 inches Hole Condition: Fair
 Test Type: Conventional Bottom Hole (Initial)
 Tester: Ray Schwager
 Unit No: 42
 Reference Elevations: 1989.00 ft (KB)
 1978.00 ft (CF)
 KB to GR/CF: 11.00 ft

Serial #: 8700 Outside
 Press @ Run Depth: psig @ 3300.00 ft (KB) Capacity: 8000.00 psig
 Start Date: 2013.01.19 End Date: 2013.01.19 Last Calib.: 2013.01.19
 Start Time: 15:40:24 End Time: 21:57:33 Time On Btm:
 Time Off Btm:

TEST COMMENT: 30-IFP-w k bl thru-out 1/8" bl
 60-ISIP-no bl
 30-FFP-no bl
 60-FSIP-no bl



PRESSURE SUMMARY

Time (Min.)	Pressure (psig)	Temp (deg F)	Annotation

Recovery

Length (ft)	Description	Volume (bbl)
30.00	Mud	0.15

Gas Rates

Choke (inches)	Pressure (psig)	Gas Rate (Mcf/d)



**TRILOBITE
TESTING, INC.**

DRILL STEM TEST REPORT

TOOL DIAGRAM

Murfin Drilling Co Inc

36-15s-19w Ellis,KS

250 N.Water Ste. 300
Wichita KS 67202-1216

Schwind Unit #1-36

Job Ticket: 51631

DST#: 1

ATTN: Scott Robinson

Test Start: 2013.01.19 @ 15:40:18

Tool Information

Drill Pipe:	Length: 3062.00 ft	Diameter: 3.80 inches	Volume: 42.95 bbl	Tool Weight: 2200.00 lb
Heavy Wt. Pipe:	Length: 0.00 ft	Diameter: 0.00 inches	Volume: 0.00 bbl	Weight set on Packer: 25000.00 lb
Drill Collar:	Length: 210.00 ft	Diameter: 2.25 inches	Volume: 1.03 bbl	Weight to Pull Loose: 75000.00 lb
			<u>Total Volume: 43.98 bbl</u>	Tool Chased 0.00 ft
Drill Pipe Above KB:	16.00 ft			String Weight: Initial 62000.00 lb
Depth to Top Packer:	3284.00 ft			Final 62000.00 lb
Depth to Bottom Packer:	ft			
Interval between Packers:	51.00 ft			
Tool Length:	79.00 ft			
Number of Packers:	2	Diameter: 6.75 inches		

Tool Comments:

Tool Description	Length (ft)	Serial No.	Position	Depth (ft)	Accum. Lengths
------------------	-------------	------------	----------	------------	----------------

Change Over Sub	1.00			3257.00	
Shut In Tool	5.00			3262.00	
Hydraulic tool	5.00			3267.00	
Jars	5.00			3272.00	
Safety Joint	2.00			3274.00	
Packer	5.00			3279.00	28.00 Bottom Of Top Packer
Packer	5.00			3284.00	
Stubb	1.00			3285.00	
Perforations	15.00			3300.00	
Recorder	0.00	8369	Inside	3300.00	
Recorder	0.00	8700	Outside	3300.00	
Blank Spacing	32.00			3332.00	
Bullnose	3.00			3335.00	51.00 Bottom Packers & Anchor

Total Tool Length: 79.00



**TRILOBITE
TESTING, INC.**

DRILL STEM TEST REPORT

FLUID SUMMARY

Murfin Drilling Co Inc
250 N. Water Ste. 300
Wichita KS 67202-1216
ATTN: Scott Robinson

36-15s-19w Ellis, KS
Schwind Unit #1-36
Job Ticket: 51631 **DST#: 1**
Test Start: 2013.01.19 @ 15:40:18

Mud and Cushion Information

Mud Type: Gel Chem	Cushion Type:	Oil API:	deg API
Mud Weight: 9.00 lb/gal	Cushion Length: ft	Water Salinity:	ppm
Viscosity: 65.00 sec/qt	Cushion Volume: bbl		
Water Loss: 6.33 in ³	Gas Cushion Type:		
Resistivity: ohm.m	Gas Cushion Pressure: psig		
Salinity: 4900.00 ppm			
Filter Cake: 1.00 inches			

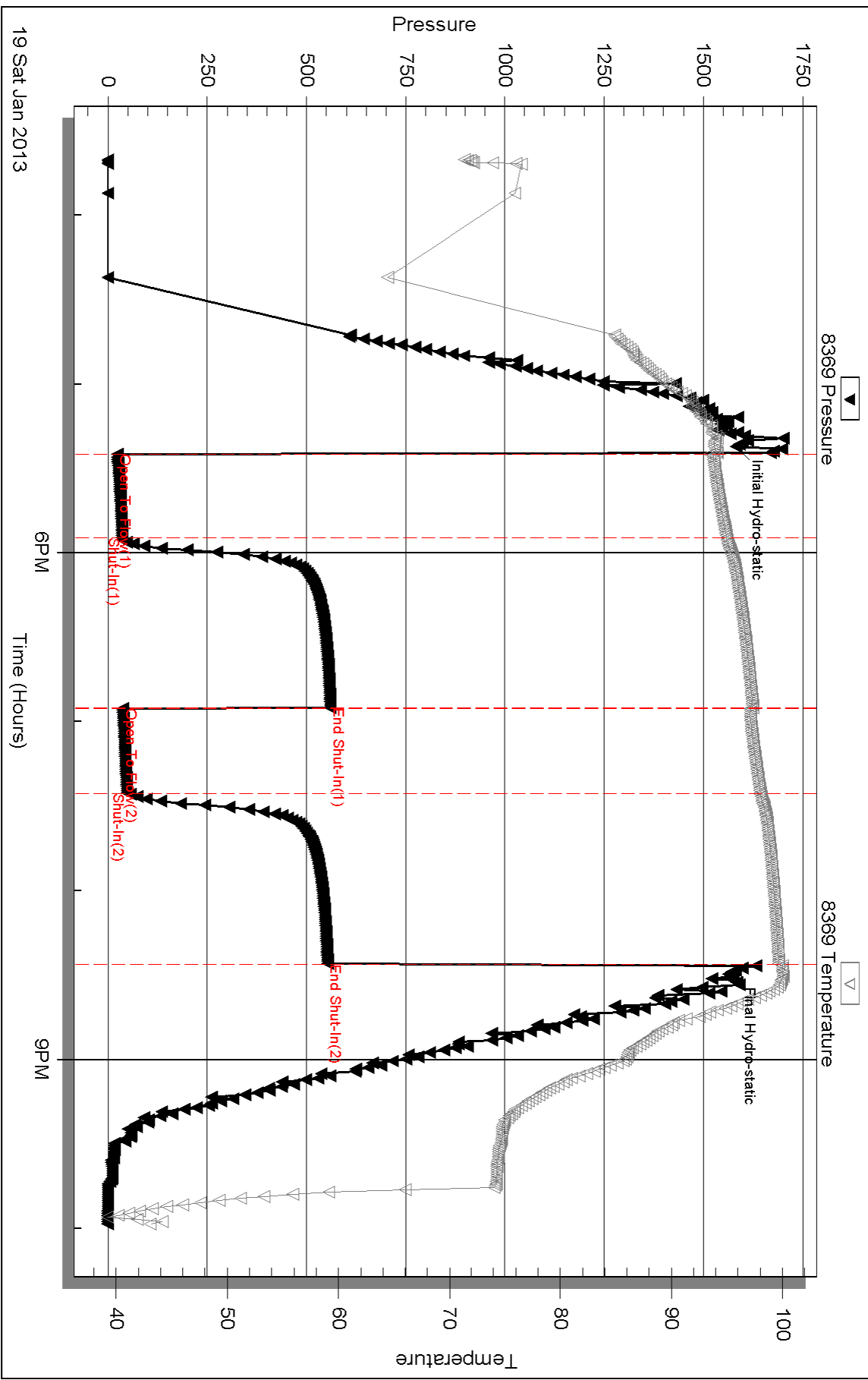
Recovery Information

Recovery Table

Length ft	Description	Volume bbl
30.00	Mud	0.148

Total Length: 30.00 ft Total Volume: 0.148 bbl
 Num Fluid Samples: 0 Num Gas Bombs: 0 Serial #:
 Laboratory Name: Laboratory Location:
 Recovery Comments:

Pressure vs. Time

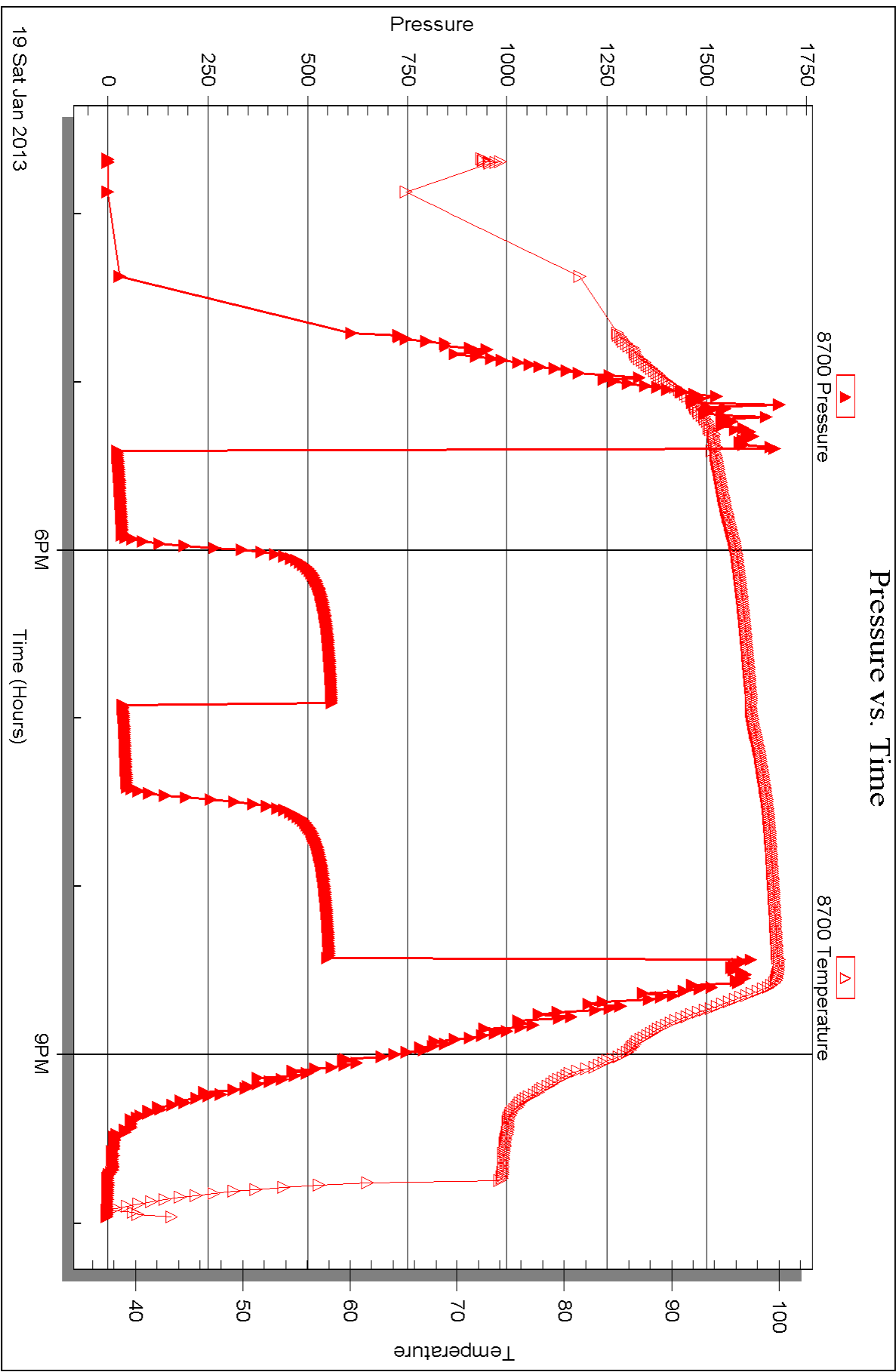


Serial #: 8700

Outside Murfin Drilling Co Inc

Schwind Unit #1-36

DST Test Number: 1





DRILL STEM TEST REPORT

Prepared For: **Murfin Drilling Co Inc**

250 N. Water Ste. 300
Wichita KS 67202-1216

ATTN: Scott Robinson

Schwind Unit #1-36

36-15s-19w Ellis,KS

Start Date: 2013.01.20 @ 16:45:47

End Date: 2013.01.20 @ 23:06:41

Job Ticket #: 51632 DST #: 2

Trilobite Testing, Inc

PO Box 362 Hays, KS 67601

ph: 785-625-4778 fax: 785-625-5620

Printed: 2013.01.24 @ 15:17:12



TRILOBITE TESTING, INC.

DRILL STEM TEST REPORT

Murfin Drilling Co Inc
 250 N. Water Ste. 300
 Wichita KS 67202-1216
 ATTN: Scott Robinson

36-15s-19w Ellis, KS
Schwind Unit #1-36
 Job Ticket: 51632 **DST#: 2**
 Test Start: 2013.01.20 @ 16:45:47

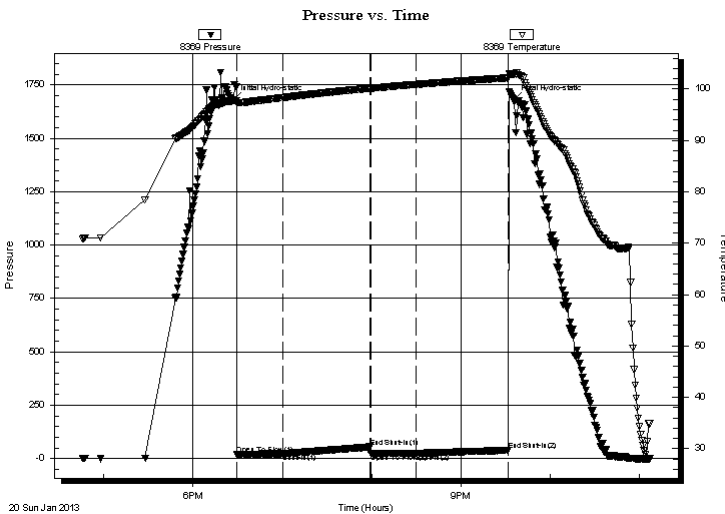
GENERAL INFORMATION:

Formation: **LKC I-K**
 Deviated: No Whipstock: ft (KB)
 Test Type: Conventional Bottom Hole (Reset)
 Time Tool Opened: 18:29:27 Tester: Ray Schwager
 Time Test Ended: 23:06:41 Unit No: 42
 Interval: **3427.00 ft (KB) To 3495.00 ft (KB) (TVD)** Reference Elevations: 1989.00 ft (KB)
 Total Depth: 3495.00 ft (KB) (TVD) 1978.00 ft (CF)
 Hole Diameter: 7.88 inches Hole Condition: Fair KB to GR/CF: 11.00 ft

Serial #: 8369 Inside
 Press @ Run Depth: 24.27 psig @ 3437.00 ft (KB) Capacity: 8000.00 psig
 Start Date: 2013.01.20 End Date: 2013.01.20 Last Calib.: 2013.01.20
 Start Time: 16:45:47 End Time: 23:06:41 Time On Btm: 2013.01.20 @ 18:26:57
 Time Off Btm: 2013.01.20 @ 21:35:42

TEST COMMENT: 30-IFP-w k bl, died in 20 min
 60-ISIP-no bl
 30-FFP-no bl
 60-FSIP-no bl

PRESSURE SUMMARY



Time (Min.)	Pressure (psig)	Temp (deg F)	Annotation
0	1681.21	97.67	Initial Hydro-static
3	19.47	97.29	Open To Flow (1)
33	22.35	98.32	Shut-In(1)
92	54.54	100.15	End Shut-In(1)
93	23.50	100.14	Open To Flow (2)
123	24.27	100.89	Shut-In(2)
185	38.78	102.16	End Shut-In(2)
189	1681.22	102.92	Final Hydro-static

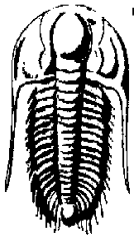
Recovery

Length (ft)	Description	Volume (bbl)
10.00	Mud	0.05

* Recovery from multiple tests

Gas Rates

Choke (inches)	Pressure (psig)	Gas Rate (Mcf/d)



**TRILOBITE
TESTING, INC.**

DRILL STEM TEST REPORT

Murfin Drilling Co Inc
250 N. Water Ste. 300
Wichita KS 67202-1216
ATTN: Scott Robinson

36-15s-19w Ellis, KS

Schwind Unit #1-36

Job Ticket: 51632 **DST#: 2**

Test Start: 2013.01.20 @ 16:45:47

GENERAL INFORMATION:

Formation: **LKC I-K**

Deviated: No Whipstock: ft (KB)

Time Tool Opened: 18:29:27

Time Test Ended: 23:06:41

Interval: **3427.00 ft (KB) To 3495.00 ft (KB) (TVD)**

Total Depth: 3495.00 ft (KB) (TVD)

Hole Diameter: 7.88 inches Hole Condition: Fair

Test Type: Conventional Bottom Hole (Reset)

Tester: Ray Schwager

Unit No: 42

Reference Elevations: 1989.00 ft (KB)

1978.00 ft (CF)

KB to GR/CF: 11.00 ft

Serial #: 8700

Outside

Press @ Run Depth: psig @ 3437.00 ft (KB)

Start Date: 2013.01.20 End Date: 2013.01.20

Start Time: 16:45:31 End Time: 23:05:10

Capacity: 8000.00 psig

Last Calib.: 2013.01.20

Time On Btm:

Time Off Btm:

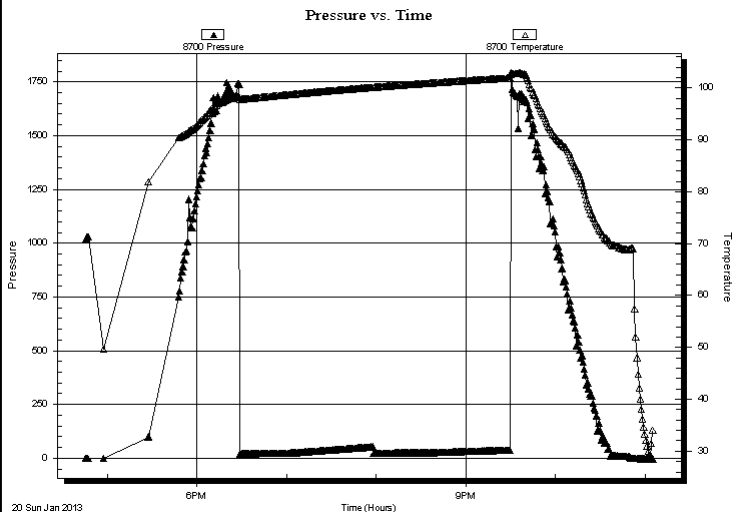
TEST COMMENT: 30-IFP-w k bl, died in 20 min

60-ISIP-no bl

30-FFP-no bl

60-FSIP-no bl

PRESSURE SUMMARY



Time (Min.)	Pressure (psig)	Temp (deg F)	Annotation

Recovery

Length (ft)	Description	Volume (bbl)
10.00	Mud	0.05

* Recovery from multiple tests

Gas Rates

Choke (inches)	Pressure (psig)	Gas Rate (Mcf/d)



**TRILOBITE
TESTING, INC.**

DRILL STEM TEST REPORT

TOOL DIAGRAM

Murfin Drilling Co Inc
250 N. Water Ste. 300
Wichita KS 67202-1216
ATTN: Scott Robinson

36-15s-19w Ellis, KS
Schwind Unit #1-36
Job Ticket: 51632 **DST#: 2**
Test Start: 2013.01.20 @ 16:45:47

Tool Information

Drill Pipe:	Length: 3220.00 ft	Diameter: 3.80 inches	Volume: 45.17 bbl	Tool Weight: 2200.00 lb
Heavy Wt. Pipe:	Length: 0.00 ft	Diameter: 0.00 inches	Volume: 0.00 bbl	Weight set on Packer: 25000.00 lb
Drill Collar:	Length: 210.00 ft	Diameter: 2.25 inches	Volume: 1.03 bbl	Weight to Pull Loose: 70000.00 lb
			<u>Total Volume: 46.20 bbl</u>	Tool Chased 0.00 ft
Drill Pipe Above KB:	31.00 ft			String Weight: Initial 61000.00 lb
Depth to Top Packer:	3427.00 ft			Final 61000.00 lb
Depth to Bottom Packer:	ft			
Interval between Packers:	68.00 ft			
Tool Length:	96.00 ft			
Number of Packers:	2	Diameter: 6.75 inches		

Tool Comments:

Tool Description	Length (ft)	Serial No.	Position	Depth (ft)	Accum. Lengths
-------------------------	--------------------	-------------------	-----------------	-------------------	-----------------------

Change Over Sub	1.00			3400.00	
Shut In Tool	5.00			3405.00	
Hydraulic tool	5.00			3410.00	
Jars	5.00			3415.00	
Safety Joint	2.00			3417.00	
Packer	5.00			3422.00	28.00 Bottom Of Top Packer
Packer	5.00			3427.00	
Stubb	1.00			3428.00	
Perforations	9.00			3437.00	
Recorder	0.00	8369	Inside	3437.00	
Recorder	0.00	8700	Outside	3437.00	
Blank Spacing	32.00			3469.00	
Perforations	23.00			3492.00	
Bullnose	3.00			3495.00	68.00 Bottom Packers & Anchor

Total Tool Length: 96.00



**TRILOBITE
TESTING, INC.**

DRILL STEM TEST REPORT

FLUID SUMMARY

Murfin Drilling Co Inc

36-15s-19w Ellis,KS

250 N.Water Ste. 300
Wichita KS 67202-1216

Schwind Unit #1-36

Job Ticket: 51632

DST#: 2

ATTN: Scott Robinson

Test Start: 2013.01.20 @ 16:45:47

Mud and Cushion Information

Mud Type: Gel Chem

Cushion Type:

Oil API:

deg API

Mud Weight: 9.00 lb/gal

Cushion Length:

ft

Water Salinity:

ppm

Viscosity: 57.00 sec/qt

Cushion Volume:

bbbl

Water Loss: 6.74 in³

Gas Cushion Type:

Resistivity: ohm.m

Gas Cushion Pressure:

psig

Salinity: 5600.00 ppm

Filter Cake: 1.00 inches

Recovery Information

Recovery Table

Length ft	Description	Volume bbl
10.00	Mud	0.049

Total Length: 10.00 ft Total Volume: 0.049 bbl

Num Fluid Samples: 0

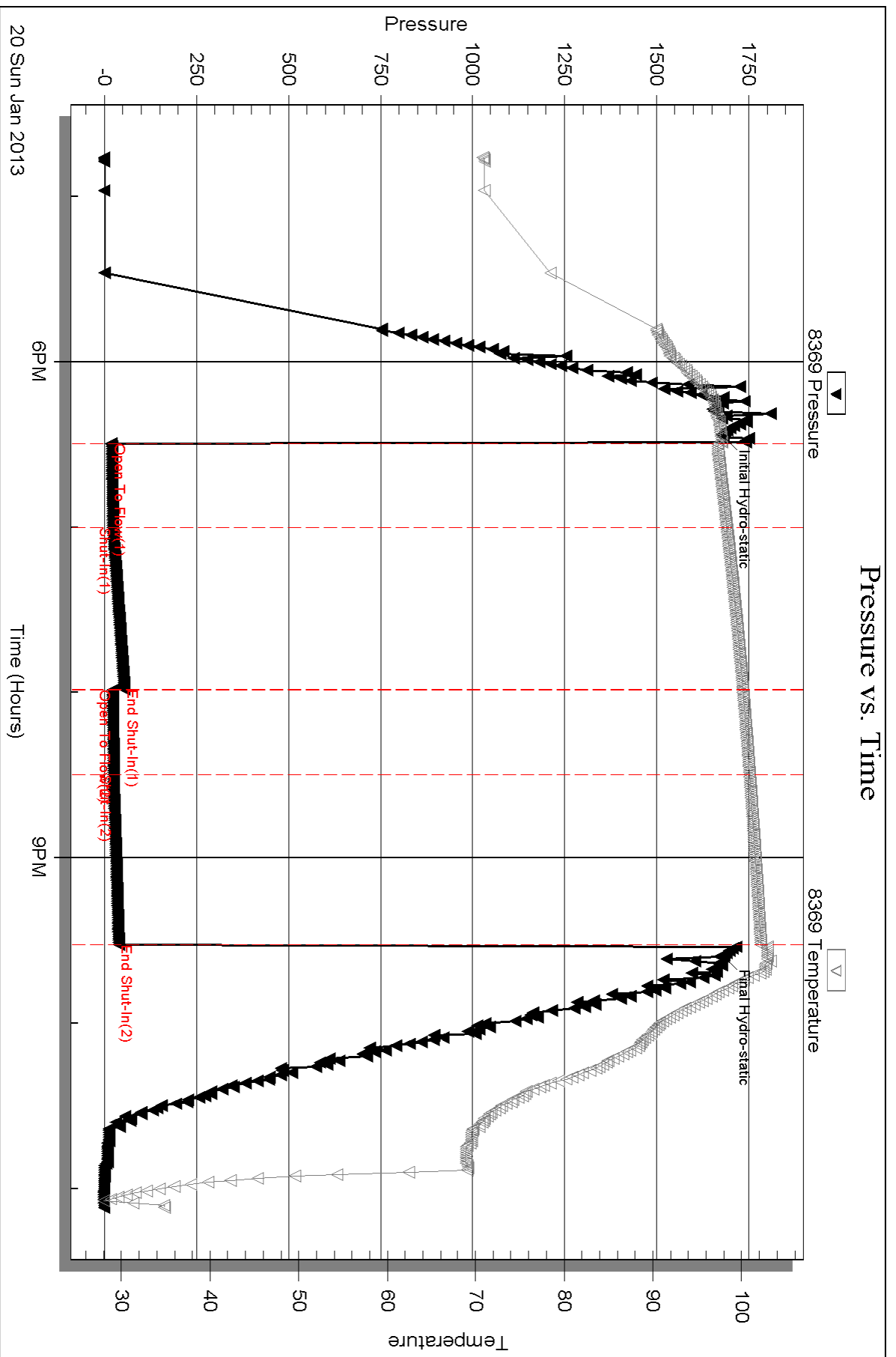
Num Gas Bombs: 0

Serial #:

Laboratory Name:

Laboratory Location:

Recovery Comments:

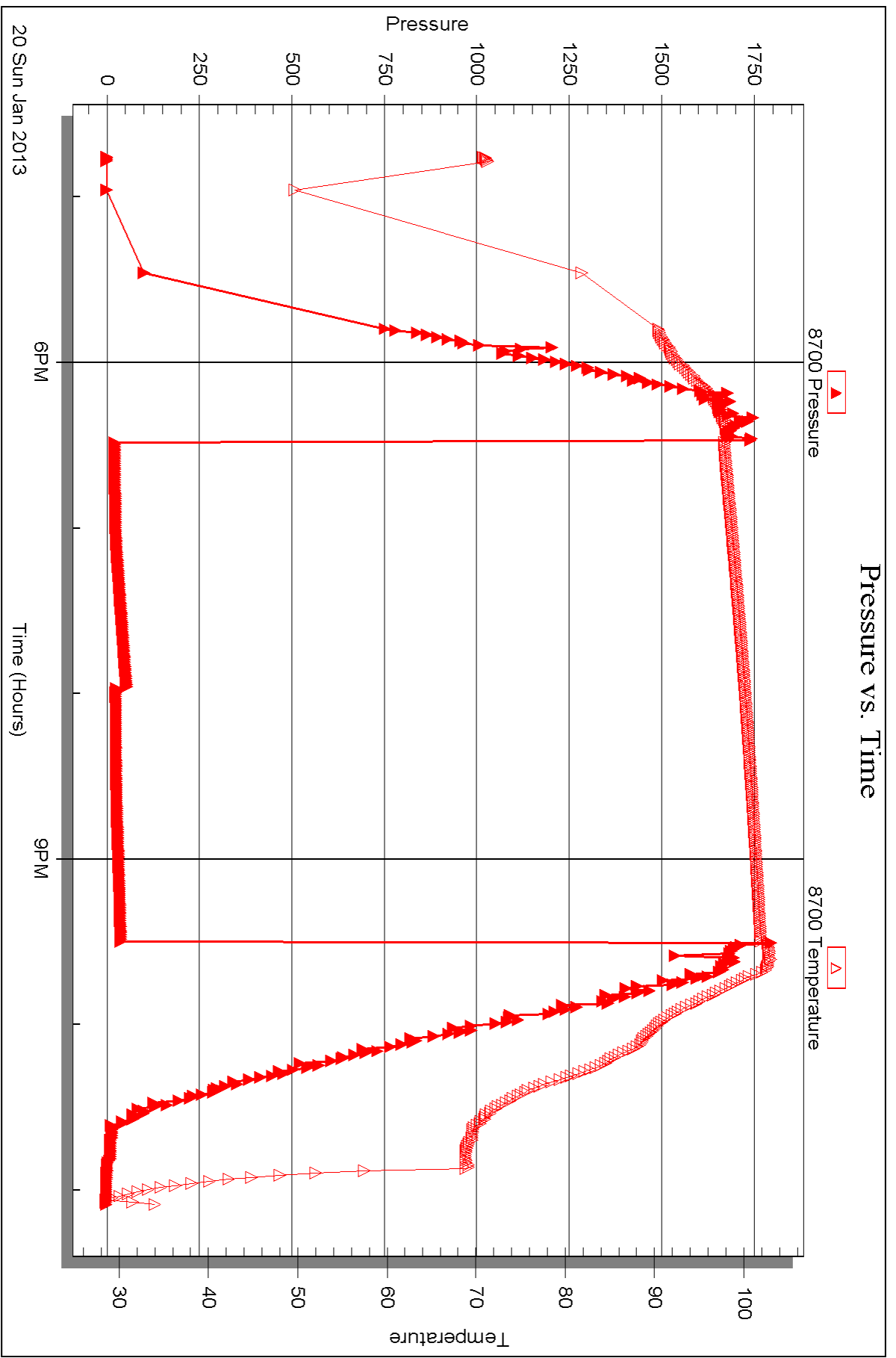


Serial #: 8700

Outside Murfin Drilling Co Inc

Schwind Unit #1-36

DST Test Number: 2



Triobite Testing, Inc

Ref. No: 51632

Printed: 2013.01.24 @ 15:17:15



DRILL STEM TEST REPORT

Prepared For: **Murfin Drilling Co Inc**

250 N. Water Ste. 300
Wichita KS 67202-1216

ATTN: Scott Robinson

Schwind Unit #1-36

36-15s-19w Ellis,KS

Start Date: 2013.01.21 @ 11:45:50

End Date: 2013.01.21 @ 18:10:29

Job Ticket #: 51633 DST #: 3

Trilobite Testing, Inc

PO Box 362 Hays, KS 67601

ph: 785-625-4778 fax: 785-625-5620

Printed: 2013.01.24 @ 15:16:12

Murfin Drilling Co Inc

36-15s-19w Ellis,KS

Schwind Unit #1-36

DST # 3

Lower Pawnee

2013.01.21



TRILOBITE TESTING, INC.

DRILL STEM TEST REPORT

Murfin Drilling Co Inc
 250 N.Water Ste. 300
 Wichita KS 67202-1216
 ATTN: Scott Robinson

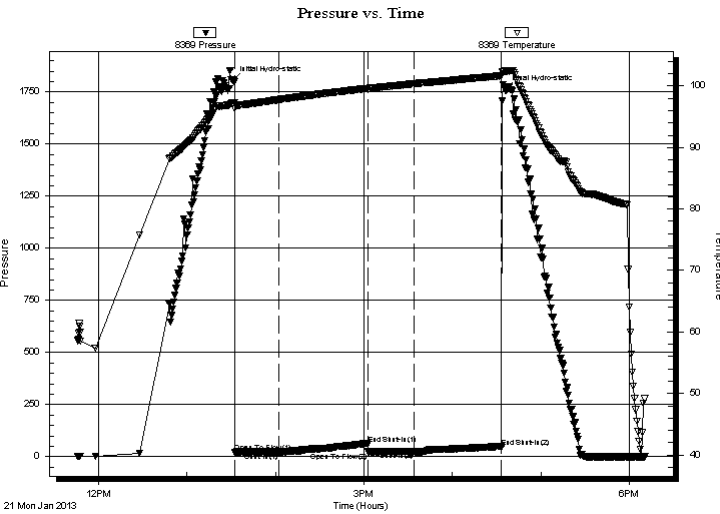
36-15s-19w Ellis,KS
Schwind Unit #1-36
 Job Ticket: 51633 **DST#: 3**
 Test Start: 2013.01.21 @ 11:45:50

GENERAL INFORMATION:

Formation: **Lower Pawnee**
 Deviated: No Whipstock: ft (KB)
 Time Tool Opened: 13:32:30
 Time Test Ended: 18:10:29
 Interval: **3527.00 ft (KB) To 3572.00 ft (KB) (TVD)**
 Total Depth: 3572.00 ft (KB) (TVD)
 Hole Diameter: 7.88 inches Hole Condition: Fair
 Test Type: Conventional Bottom Hole (Reset)
 Tester: Ray Schwager
 Unit No: 42
 Reference Elevations: 1989.00 ft (KB)
 1978.00 ft (CF)
 KB to GR/CF: 11.00 ft

Serial #: 8369 Inside
 Press @ Run Depth: 24.24 psig @ 3536.00 ft (KB) Capacity: 8000.00 psig
 Start Date: 2013.01.21 End Date: 2013.01.21 Last Calib.: 2013.01.21
 Start Time: 11:45:50 End Time: 18:10:29 Time On Btm: 2013.01.21 @ 13:31:15
 Time Off Btm: 2013.01.21 @ 16:35:59

TEST COMMENT: 30-IFP- weak surface blow died in 25 minutes
 60-ISIP-no bl
 30-FFP- few bubbles w hen tool opened then died no bl
 60-FSIP-no bl



PRESSURE SUMMARY

Time (Min.)	Pressure (psig)	Temp (deg F)	Annotation
0	1803.13	97.24	Initial Hydro-static
2	22.33	96.37	Open To Flow (1)
31	22.17	97.79	Shut-In(1)
92	60.02	99.62	End Shut-In(1)
92	22.97	99.61	Open To Flow (2)
123	24.24	100.37	Shut-In(2)
183	46.52	101.68	End Shut-In(2)
185	1759.66	102.43	Final Hydro-static

Recovery

Length (ft)	Description	Volume (bbl)
5.00	Mud	0.02

* Recovery from multiple tests

Gas Rates

Choke (inches)	Pressure (psig)	Gas Rate (Mcf/d)



**TRILOBITE
TESTING, INC.**

DRILL STEM TEST REPORT

TOOL DIAGRAM

Murfin Drilling Co Inc
250 N. Water Ste. 300
Wichita KS 67202-1216
ATTN: Scott Robinson

36-15s-19w Ellis, KS
Schwind Unit #1-36
Job Ticket: 51633 **DST#: 3**
Test Start: 2013.01.21 @ 11:45:50

Tool Information

Drill Pipe:	Length: 3314.00 ft	Diameter: 3.80 inches	Volume: 46.49 bbl	Tool Weight: 2200.00 lb
Heavy Wt. Pipe:	Length: 0.00 ft	Diameter: 0.00 inches	Volume: 0.00 bbl	Weight set on Packer: 25000.00 lb
Drill Collar:	Length: 210.00 ft	Diameter: 2.25 inches	Volume: 1.03 bbl	Weight to Pull Loose: 70000.00 lb
			<u>Total Volume: 47.52 bbl</u>	Tool Chased 0.00 ft
Drill Pipe Above KB:	25.00 ft			String Weight: Initial 64000.00 lb
Depth to Top Packer:	3527.00 ft			Final 64000.00 lb
Depth to Bottom Packer:	ft			
Interval between Packers:	45.00 ft			
Tool Length:	73.00 ft			
Number of Packers:	2	Diameter: 6.75 inches		

Tool Comments:

Tool Description	Length (ft)	Serial No.	Position	Depth (ft)	Accum. Lengths
------------------	-------------	------------	----------	------------	----------------

Change Over Sub	1.00			3500.00	
Shut In Tool	5.00			3505.00	
Hydraulic tool	5.00			3510.00	
Jars	5.00			3515.00	
Safety Joint	2.00			3517.00	
Packer	5.00			3522.00	28.00 Bottom Of Top Packer
Packer	5.00			3527.00	
Stubb	1.00			3528.00	
Perforations	8.00			3536.00	
Recorder	0.00	8369	Inside	3536.00	
Recorder	0.00	8700	Outside	3536.00	
Blank Spacing	33.00			3569.00	
Bullnose	3.00			3572.00	45.00 Bottom Packers & Anchor

Total Tool Length: 73.00



**TRILOBITE
TESTING, INC.**

DRILL STEM TEST REPORT

FLUID SUMMARY

Murfin Drilling Co Inc

36-15s-19w Ellis,KS

250 N.Water Ste. 300
Wichita KS 67202-1216

Schwind Unit #1-36

Job Ticket: 51633

DST#: 3

ATTN: Scott Robinson

Test Start: 2013.01.21 @ 11:45:50

Mud and Cushion Information

Mud Type: Gel Chem

Cushion Type:

Oil API:

deg API

Mud Weight: 9.00 lb/gal

Cushion Length:

ft

Water Salinity:

ppm

Viscosity: 60.00 sec/qt

Cushion Volume:

bbbl

Water Loss: 6.76 in³

Gas Cushion Type:

Resistivity: ohm.m

Gas Cushion Pressure:

psig

Salinity: 5600.00 ppm

Filter Cake: 1.00 inches

Recovery Information

Recovery Table

Length ft	Description	Volume bbl
5.00	Mud	0.025

Total Length: 5.00 ft Total Volume: 0.025 bbl

Num Fluid Samples: 0

Num Gas Bombs: 0

Serial #:

Laboratory Name:

Laboratory Location:

Recovery Comments:

Serial #: 8369

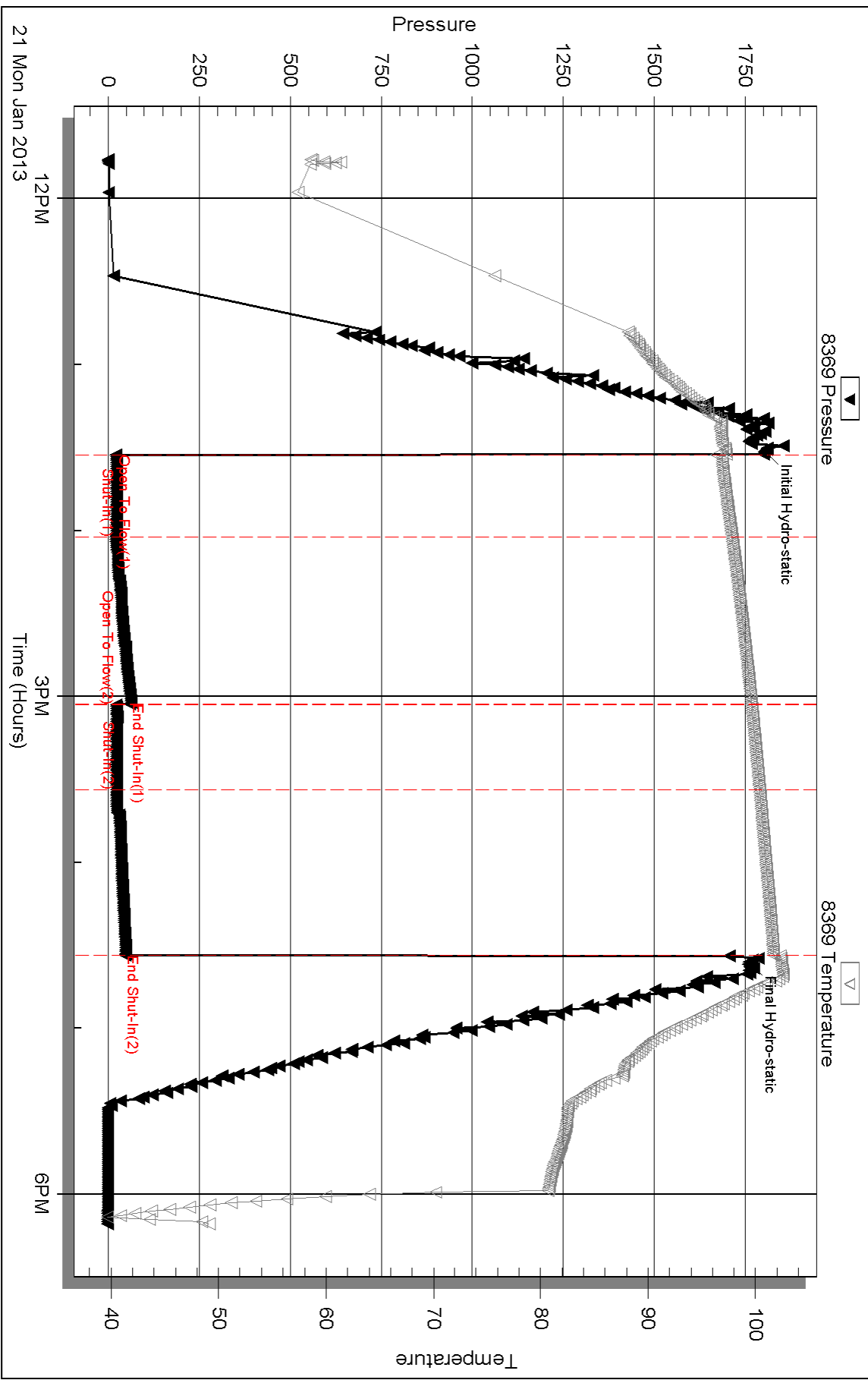
Inside

Murfin Drilling Co Inc

Schw ind Unit #1-36

DST Test Number: 3

Pressure vs. Time

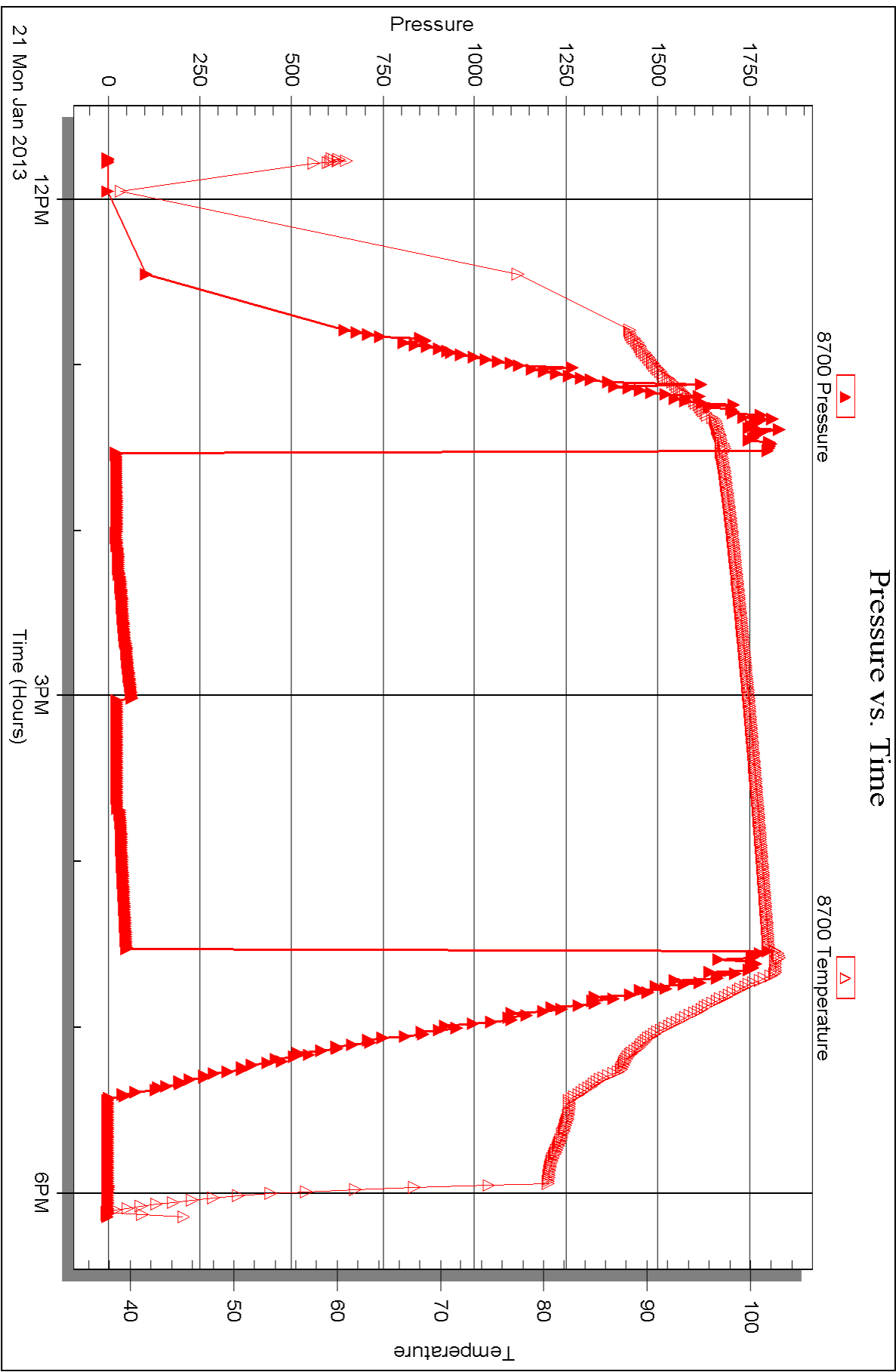


Serial #: 8700

Outside Murfin Drilling Co Inc

Schwind Unit #1-36

DST Test Number: 3



Triobite Testing, Inc

Ref. No: 51633

Printed: 2013.01.24 @ 15:16:15



DRILL STEM TEST REPORT

Prepared For: **Murfin Drilling Co Inc**

250 N. Water Ste. 300
Wichita KS 67202-1216

ATTN: Scott Robinson

Schwind Unit #1-36

36-15s-19w Ellis,KS

Start Date: 2013.01.21 @ 23:50:40

End Date: 2013.01.22 @ 07:50:25

Job Ticket #: 51634 DST #: 4

Trilobite Testing, Inc

PO Box 362 Hays, KS 67601

ph: 785-625-4778 fax: 785-625-5620

Printed: 2013.01.24 @ 15:15:32



TRILOBITE TESTING, INC.

DRILL STEM TEST REPORT

Murfin Drilling Co Inc
 250 N. Water Ste. 300
 Wichita KS 67202-1216
 ATTN: Scott Robinson

36-15s-19w Ellis, KS

Schwind Unit #1-36

Job Ticket: 51634

DST#: 4

Test Start: 2013.01.21 @ 23:50:40

GENERAL INFORMATION:

Formation: **Arbuckle**
 Deviated: No Whipstock: ft (KB)
 Test Type: Conventional Bottom Hole (Reset)
 Time Tool Opened: 01:32:40
 Tester: Ray Schwager
 Time Test Ended: 07:50:25
 Unit No: 42
 Interval: **3573.00 ft (KB) To 3593.00 ft (KB) (TVD)**
 Reference Elevations: 1989.00 ft (KB)
 Total Depth: 3593.00 ft (KB) (TVD)
 1978.00 ft (CF)
 Hole Diameter: 7.88 inches
 Hole Condition: Fair
 KB to GR/CF: 11.00 ft

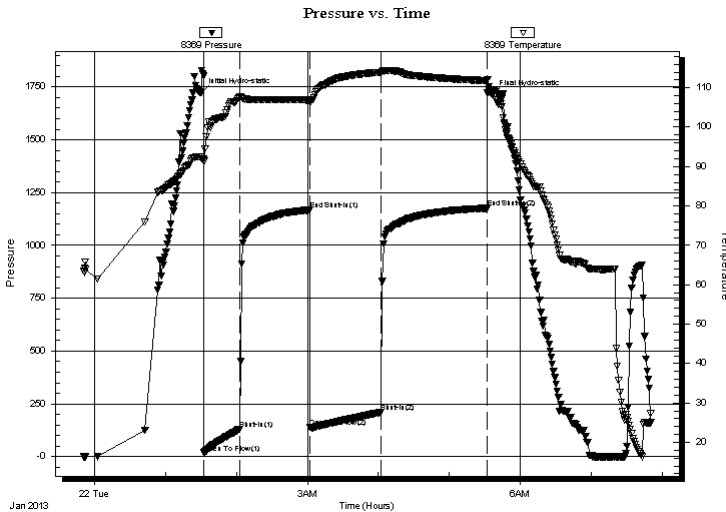
Serial #: 8369

Inside

Press @ Run Depth: 210.84 psig @ 3574.00 ft (KB) Capacity: 8000.00 psig
 Start Date: 2013.01.21 End Date: 2013.01.22 Last Calib.: 2013.01.22
 Start Time: 23:50:45 End Time: 07:50:24 Time On Btm: 2013.01.22 @ 01:30:10
 Time Off Btm: 2013.01.22 @ 05:36:10

TEST COMMENT: 30-IFP-w k to a gd bl 1/2" to 7 1/2" bl
 60-ISIP-no bl
 60-FFP-w k to a fr bl 1/2" to 6" bl
 90-FSIP-no bl

PRESSURE SUMMARY



Time (Min.)	Pressure (psig)	Temp (deg F)	Annotation
0	1722.66	92.39	Initial Hydro-static
3	18.90	91.35	Open To Flow (1)
33	131.51	107.42	Shut-In(1)
92	1168.06	106.91	End Shut-In(1)
93	138.26	106.34	Open To Flow (2)
153	210.84	113.92	Shut-In(2)
242	1176.37	111.82	End Shut-In(2)
246	1715.59	108.55	Final Hydro-static

Recovery

Length (ft)	Description	Volume (bbl)
300.00	Water	2.30
100.00	SOCMW 1%O20%M79%W	1.40
40.00	CO	0.56

* Recovery from multiple tests

Gas Rates

Choke (inches)	Pressure (psig)	Gas Rate (Mcf/d)



**TRILOBITE
TESTING, INC.**

DRILL STEM TEST REPORT

TOOL DIAGRAM

Murfin Drilling Co Inc
250 N. Water Ste. 300
Wichita KS 67202-1216
ATTN: Scott Robinson

36-15s-19w Ellis, KS
Schwind Unit #1-36
Job Ticket: 51634 **DST#: 4**
Test Start: 2013.01.21 @ 23:50:40

Tool Information

Drill Pipe:	Length: 3343.00 ft	Diameter: 3.80 inches	Volume: 46.89 bbl	Tool Weight: 2200.00 lb
Heavy Wt. Pipe:	Length: 0.00 ft	Diameter: 0.00 inches	Volume: 0.00 bbl	Weight set on Packer: 25000.00 lb
Drill Collar:	Length: 210.00 ft	Diameter: 2.25 inches	Volume: 1.03 bbl	Weight to Pull Loose: 75000.00 lb
			<u>Total Volume: 47.92 bbl</u>	Tool Chased 0.00 ft
Drill Pipe Above KB:	8.00 ft			String Weight: Initial 64000.00 lb
Depth to Top Packer:	3573.00 ft			Final 68000.00 lb
Depth to Bottom Packer:	ft			
Interval between Packers:	20.00 ft			
Tool Length:	48.00 ft			
Number of Packers:	2	Diameter: 6.75 inches		

Tool Comments:

Tool Description	Length (ft)	Serial No.	Position	Depth (ft)	Accum. Lengths
-------------------------	--------------------	-------------------	-----------------	-------------------	-----------------------

Change Over Sub	1.00			3546.00	
Shut In Tool	5.00			3551.00	
Hydraulic tool	5.00			3556.00	
Jars	5.00			3561.00	
Safety Joint	2.00			3563.00	
Packer	5.00			3568.00	28.00 Bottom Of Top Packer
Packer	5.00			3573.00	
Stubb	1.00			3574.00	
Recorder	0.00	8369	Inside	3574.00	
Recorder	0.00	8700	Outside	3574.00	
Perforations	16.00			3590.00	
Bullnose	3.00			3593.00	20.00 Bottom Packers & Anchor

Total Tool Length: 48.00



**TRILOBITE
TESTING, INC.**

DRILL STEM TEST REPORT

FLUID SUMMARY

Murfin Drilling Co Inc
250 N.Water Ste. 300
Wichita KS 67202-1216
ATTN: Scott Robinson

36-15s-19w Ellis,KS
Schwind Unit #1-36
Job Ticket: 51634 **DST#: 4**
Test Start: 2013.01.21 @ 23:50:40

Mud and Cushion Information

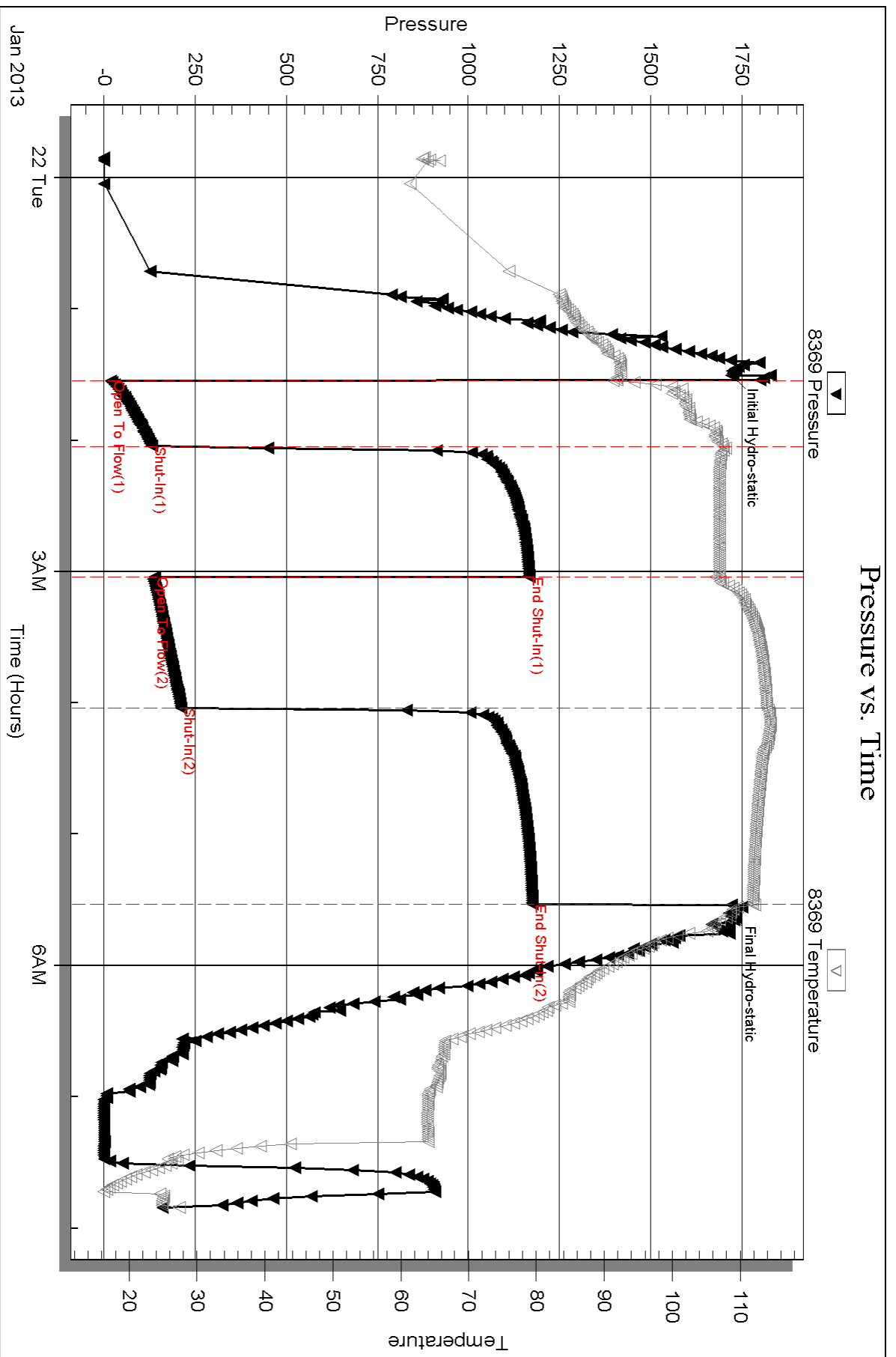
Mud Type: Gel Chem	Cushion Type:	Oil API: 32 deg API
Mud Weight: 9.00 lb/gal	Cushion Length: ft	Water Salinity: 36000 ppm
Viscosity: 55.00 sec/qt	Cushion Volume: bbl	
Water Loss: 7.16 in ³	Gas Cushion Type:	
Resistivity: ohm.m	Gas Cushion Pressure: psig	
Salinity: 7700.00 ppm		
Filter Cake: 1.00 inches		

Recovery Information

Recovery Table

Length ft	Description	Volume bbl
300.00	Water	2.295
100.00	SOCMW 1%O20%M79%W	1.403
40.00	CO	0.561

Total Length: 440.00 ft Total Volume: 4.259 bbl
Num Fluid Samples: 0 Num Gas Bombs: 0 Serial #:
Laboratory Name: Laboratory Location:
Recovery Comments: RW .27@50F

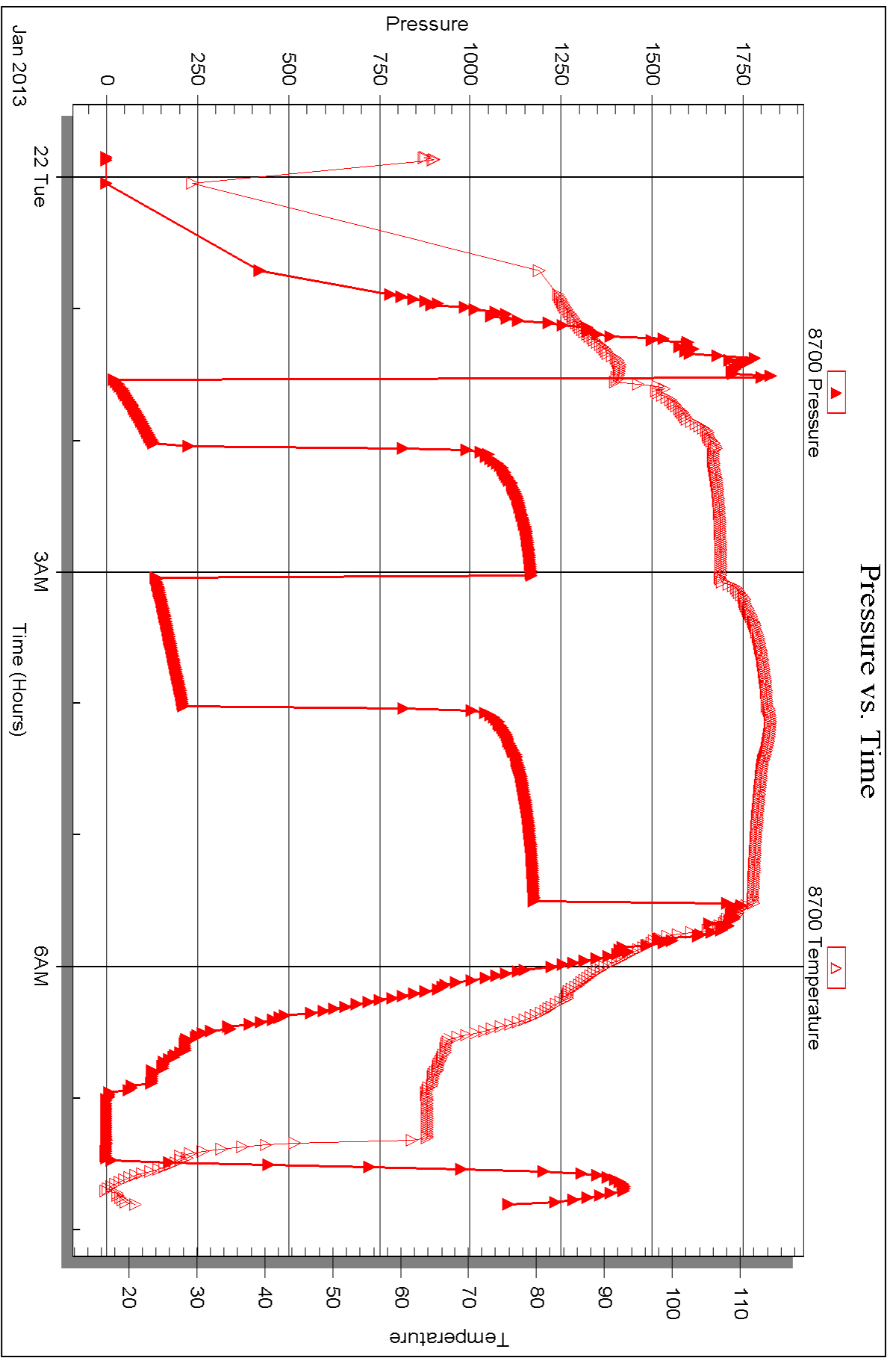


Serial #: 8700

Outside Murfin Drilling Co Inc

Schwind Unit #1-36

DST Test Number: 4





DRILL STEM TEST REPORT

Prepared For: **Murfin Drilling Co Inc**

250 N. Water Ste. 300
Wichita KS 67202-1216

ATTN: Scott Robinson

Schwind Unit #1-36

36-15s-19w Ellis,KS

Start Date: 2013.01.22 @ 15:30:44

End Date: 2013.01.22 @ 21:28:38

Job Ticket #: 51635 DST #: 5

Trilobite Testing, Inc

PO Box 362 Hays, KS 67601

ph: 785-625-4778 fax: 785-625-5620

Printed: 2013.01.24 @ 15:14:40

Murfin Drilling Co Inc

36-15s-19w Ellis,KS

Schwind Unit #1-36

DST # 5

Reagan Sd

2013.01.22



TRILOBITE TESTING, INC.

DRILL STEM TEST REPORT

Murfin Drilling Co Inc
 250 N. Water Ste. 300
 Wichita KS 67202-1216
 ATTN: Scott Robinson

36-15s-19w Ellis, KS
Schwind Unit #1-36
 Job Ticket: 51635 **DST#: 5**
 Test Start: 2013.01.22 @ 15:30:44

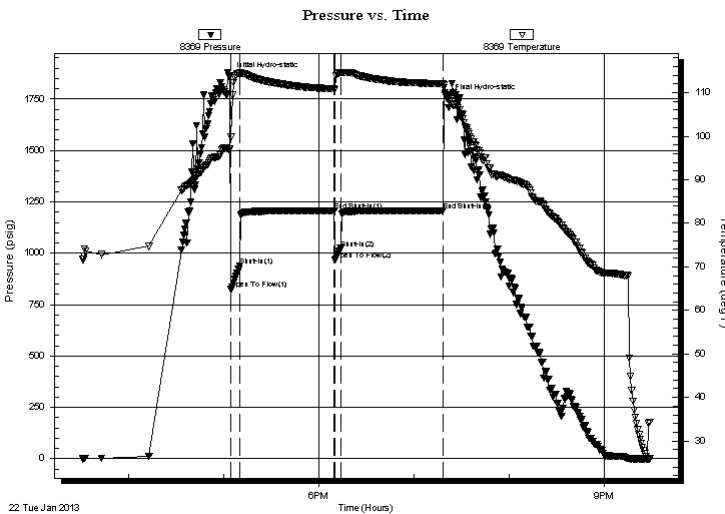
GENERAL INFORMATION:

Formation: **Reagan Sd**
 Deviated: No Whipstock: ft (KB)
 Test Type: Conventional Straddle (Reset)
 Time Tool Opened: 17:04:24 Tester: Ray Schwager
 Time Test Ended: 21:28:38 Unit No: 42
 Interval: **3599.00 ft (KB) To 3613.00 ft (KB) (TVD)** Reference Elevations: 1989.00 ft (KB)
 Total Depth: 3635.00 ft (KB) (TVD) 1978.00 ft (CF)
 Hole Diameter: 7.88 inches Hole Condition: Fair KB to GR/CF: 11.00 ft

Serial #: 8369 Inside
 Press @ Run Depth: 1022.65 psig @ 3604.00 ft (KB) Capacity: 8000.00 psig
 Start Date: 2013.01.22 End Date: 2013.01.22 Last Calib.: 2013.01.22
 Start Time: 15:30:44 End Time: 21:28:38 Time On Btm: 2013.01.22 @ 17:03:24
 Time Off Btm: 2013.01.22 @ 19:21:09

TEST COMMENT: 5-IFP-strg bl
 60-ISIP-no bl
 5-FFP-strg bl
 60-FSIP-no bl

PRESSURE SUMMARY



Time (Min.)	Pressure (psig)	Temp (deg F)	Annotation
0	1857.25	96.98	Initial Hydro-static
1	823.60	99.79	Open To Flow (1)
7	938.65	114.46	Shut-In(1)
66	1206.72	110.86	End Shut-In(1)
67	967.75	110.75	Open To Flow (2)
71	1022.65	114.57	Shut-In(2)
135	1206.82	112.09	End Shut-In(2)
138	1750.65	108.85	Final Hydro-static

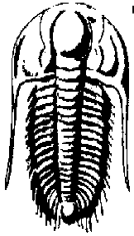
Recovery

Length (ft)	Description	Volume (bbl)
1560.00	Water	19.97
180.00	MW 15%MB5%W	2.52

* Recovery from multiple tests

Gas Rates

Choke (inches)	Pressure (psig)	Gas Rate (Mcf/d)



TRILOBITE TESTING, INC.

DRILL STEM TEST REPORT

Murfin Drilling Co Inc
 250 N. Water Ste. 300
 Wichita KS 67202-1216
 ATTN: Scott Robinson

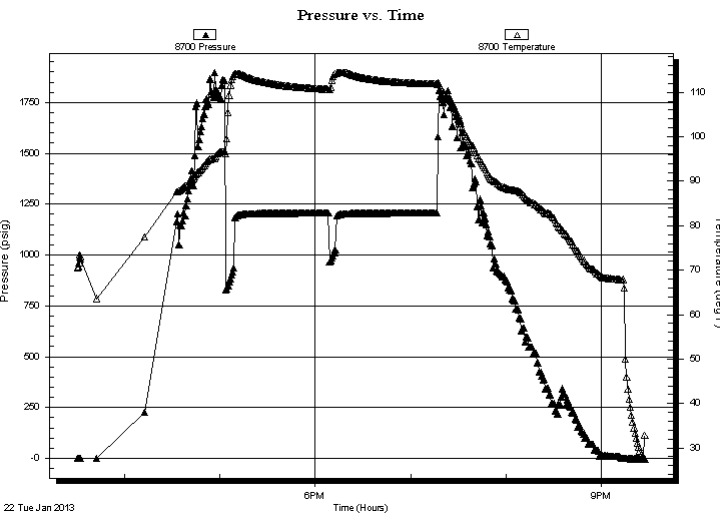
36-15s-19w Ellis, KS
Schwind Unit #1-36
 Job Ticket: 51635 **DST#: 5**
 Test Start: 2013.01.22 @ 15:30:44

GENERAL INFORMATION:

Formation: **Reagan Sd**
 Deviated: No Whipstock: ft (KB)
 Time Tool Opened: 17:04:24
 Time Test Ended: 21:28:38
Interval: 3599.00 ft (KB) To 3613.00 ft (KB) (TVD)
 Total Depth: 3635.00 ft (KB) (TVD)
 Hole Diameter: 7.88 inches Hole Condition: Fair
 Test Type: Conventional Straddle (Reset)
 Tester: Ray Schwager
 Unit No: 42
 Reference Elevations: 1989.00 ft (KB)
 1978.00 ft (CF)
 KB to GR/CF: 11.00 ft

Serial #: 8700 Outside
 Press @ Run Depth: psig @ 3604.00 ft (KB) Capacity: 8000.00 psig
 Start Date: 2013.01.22 End Date: 2013.01.22 Last Calib.: 2013.01.22
 Start Time: 15:30:45 End Time: 21:27:24 Time On Btm:
 Time Off Btm:

TEST COMMENT: 5-IFP-strg bl
 60-ISIP-no bl
 5-FFP-strg bl
 60-FSIP-no bl



PRESSURE SUMMARY

Time (Min.)	Pressure (psig)	Temp (deg F)	Annotation

Recovery

Length (ft)	Description	Volume (bbl)
1560.00	Water	19.97
180.00	MW 15% M85% W	2.52

* Recovery from multiple tests

Gas Rates

Choke (inches)	Pressure (psig)	Gas Rate (Mcf/d)



**TRILOBITE
TESTING, INC.**

DRILL STEM TEST REPORT

TOOL DIAGRAM

Murfin Drilling Co Inc
250 N. Water Ste. 300
Wichita KS 67202-1216
ATTN: Scott Robinson

36-15s-19w Ellis, KS
Schwind Unit #1-36
Job Ticket: 51635 **DST#: 5**
Test Start: 2013.01.22 @ 15:30:44

Tool Information

Drill Pipe:	Length: 3376.00 ft	Diameter: 3.80 inches	Volume: 47.36 bbl	Tool Weight: 2200.00 lb
Heavy Wt. Pipe:	Length: 0.00 ft	Diameter: 0.00 inches	Volume: 0.00 bbl	Weight set on Packer: 25000.00 lb
Drill Collar:	Length: 210.00 ft	Diameter: 2.25 inches	Volume: 1.03 bbl	Weight to Pull Loose: 75000.00 lb
			<u>Total Volume: 48.39 bbl</u>	Tool Chased 0.00 ft
Drill Pipe Above KB:	15.00 ft			String Weight: Initial 64000.00 lb
Depth to Top Packer:	3599.00 ft			Final 70000.00 lb
Depth to Bottom Packer:	3613.00 ft			
Interval between Packers:	14.00 ft			
Tool Length:	68.00 ft			
Number of Packers:	3	Diameter: 6.75 inches		
Tool Comments:				

Tool Description	Length (ft)	Serial No.	Position	Depth (ft)	Accum. Lengths
------------------	-------------	------------	----------	------------	----------------

Change Over Sub	1.00			3572.00	
Shut In Tool	5.00			3577.00	
Hydraulic tool	5.00			3582.00	
Jars	5.00			3587.00	
Safety Joint	2.00			3589.00	
Packer	5.00			3594.00	28.00 Bottom Of Top Packer
Packer	5.00			3599.00	
Stubb	1.00			3600.00	
Perforations	4.00			3604.00	
Recorder	0.00	8369	Inside	3604.00	
Recorder	0.00	8700	Outside	3604.00	
Perforations	5.00			3609.00	
Blank Off Sub	1.00			3610.00	
Blank Spacing	3.00			3613.00	14.00 Tool Interval
Packer	5.00			3618.00	
Stubb	1.00			3619.00	
Recorder	0.00	8374	Below	3619.00	
Perforations	17.00			3636.00	
Bullnose	3.00			3639.00	26.00 Bottom Packers & Anchor

Total Tool Length: 68.00



**TRILOBITE
TESTING, INC.**

DRILL STEM TEST REPORT

FLUID SUMMARY

Murfin Drilling Co Inc
250 N.Water Ste. 300
Wichita KS 67202-1216
ATTN: Scott Robinson

36-15s-19w Ellis,KS
Schwind Unit #1-36
Job Ticket: 51635 **DST#: 5**
Test Start: 2013.01.22 @ 15:30:44

Mud and Cushion Information

Mud Type: Gel Chem	Cushion Type:	Oil API:	deg API
Mud Weight: 9.00 lb/gal	Cushion Length: ft	Water Salinity:	44000 ppm
Viscosity: 65.00 sec/qt	Cushion Volume: bbl		
Water Loss: 6.33 in ³	Gas Cushion Type:		
Resistivity: ohm.m	Gas Cushion Pressure: psig		
Salinity: 4900.00 ppm			
Filter Cake: 1.00 inches			

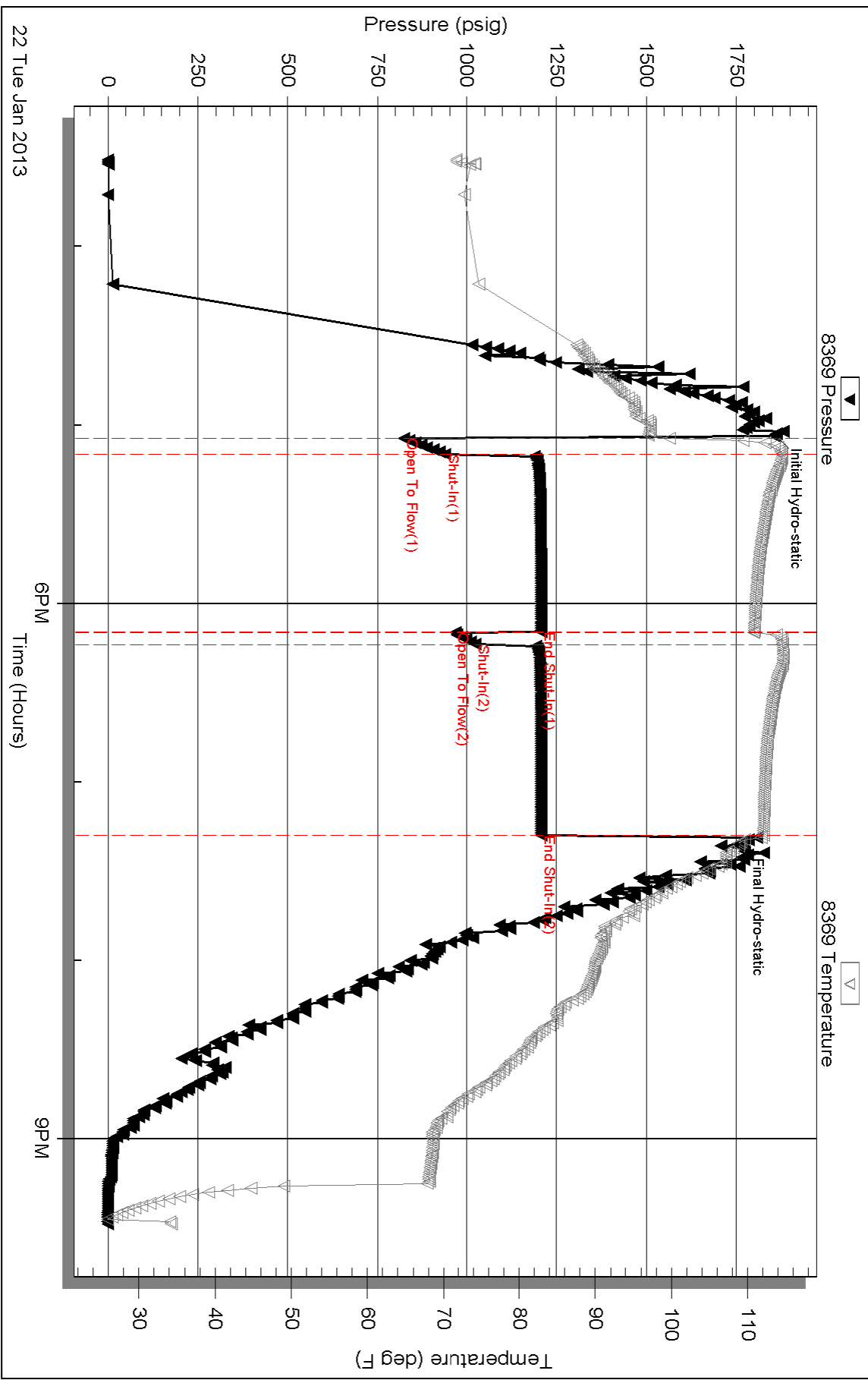
Recovery Information

Recovery Table

Length ft	Description	Volume bbl
1560.00	Water	19.970
180.00	MW 15%M85%W	2.525

Total Length: 1740.00 ft Total Volume: 22.495 bbl
Num Fluid Samples: 0 Num Gas Bombs: 0 Serial #:
Laboratory Name: Laboratory Location:
Recovery Comments: RW .18@63F

Pressure vs. Time



22 Tue Jan 2013

6PM

Time (Hours)

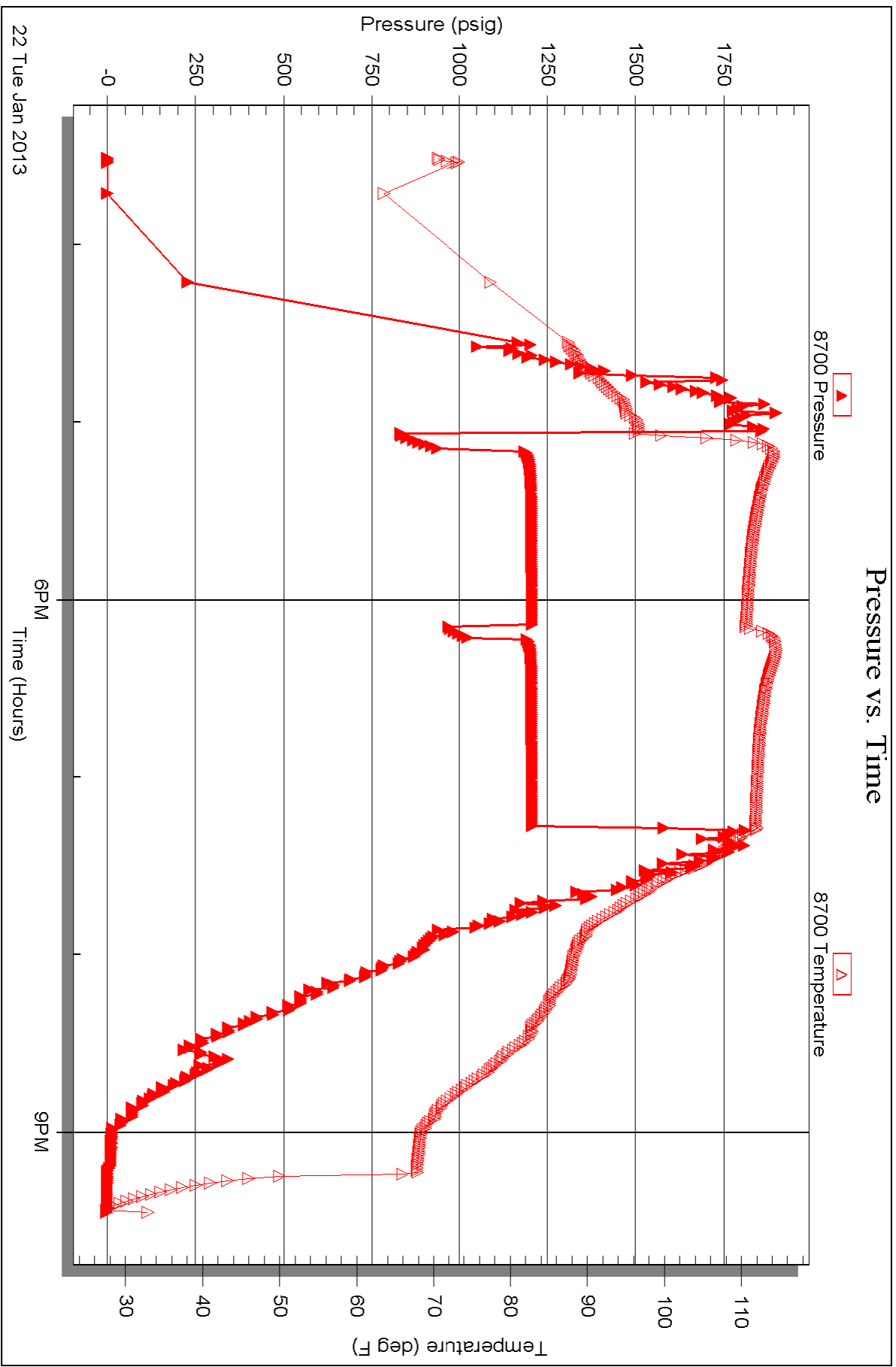
9PM

Serial #: 8700

Outside Murfin Drilling Co Inc

Schwind Unit #1-36

DST Test Number: 5



22 Tue Jan 2013

Triobite Testing, Inc

Ref. No: 51635

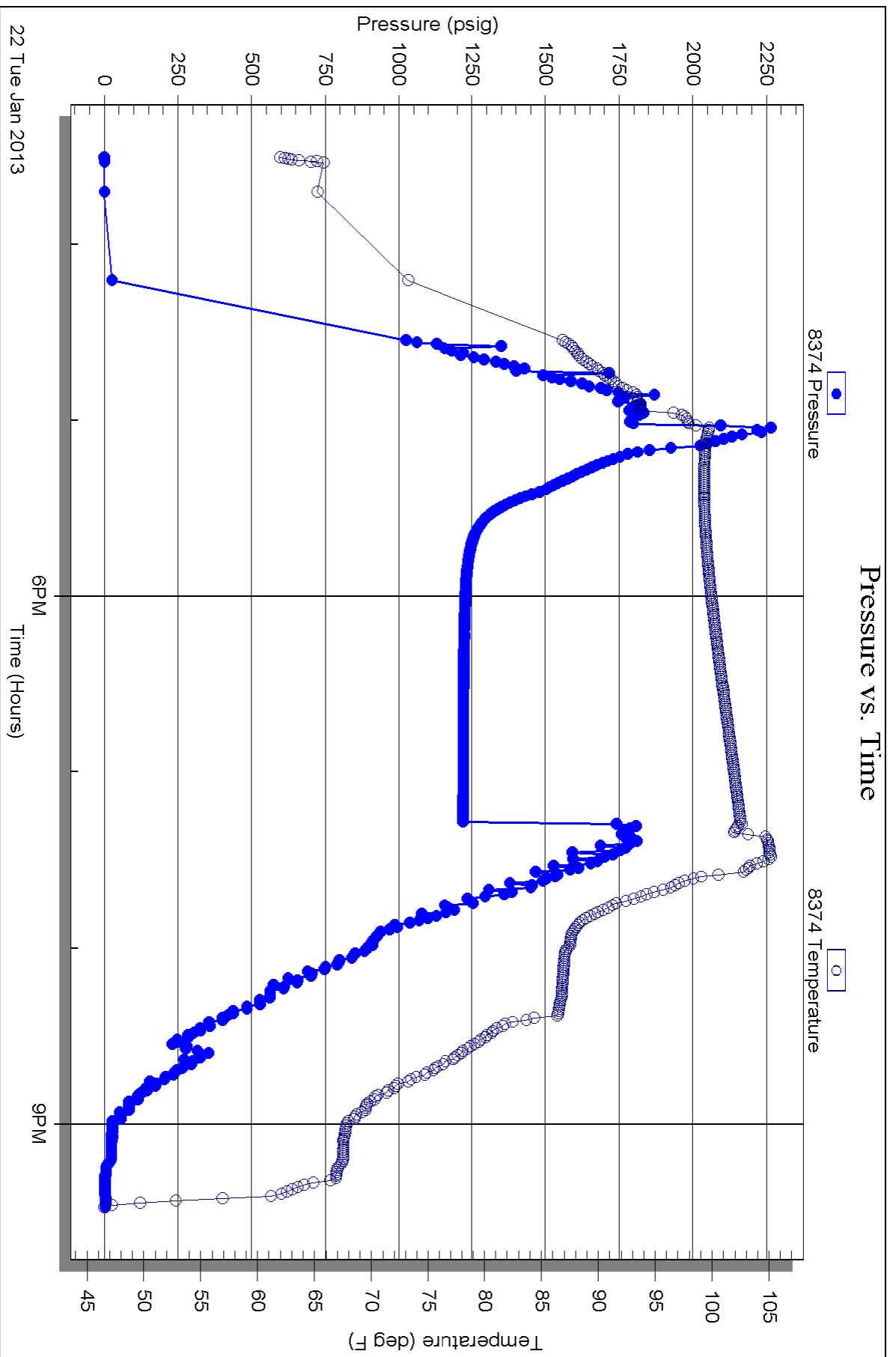
Printed: 2013.01.24 @ 15:14:44

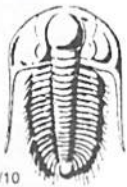
Serial #: 8374

Below (Stratader) Drilling Co Inc

Schwind Unit #1-36

DST Test Number: 5





TRILOBITE TESTING INC.

1515 Commerce Parkway • Hays, Kansas 67601

Test Ticket

NO. 51631

4/10

Well Name & No. Schwind Unit #1-36 Test No. 1 Date 1-19-13
 Company Murfin Drilling Co Inc Elevation 1989 KB 1978 GL
 Address 250 N. WATER, STE 300 WICHITA, KS 67202-1216
 Co. Rep / Geo. Robert Hendrix Rig Murfin rig 2
 Location: Sec. 36 Twp. 15^s Rge. 19^w Co. ELLIS State Ks

Interval Tested 3284-3335 Zone Tested LKC B-0
 Anchor Length 51 Drill Pipe Run 3062 Mud Wt. 8.9
 Top Packer Depth 3279 Drill Collars Run 210 Vis 65
 Bottom Packer Depth 3284 Wt. Pipe Run - WL 6.4
 Total Depth 3335 Chlorides 4900 ppm System LCM 3[#]
 Blow Description TFP - Weak Blow thru-out 1/8" Blow
ISIP - NO Blow
FFP - NO Blow
FSIP - NO Blow

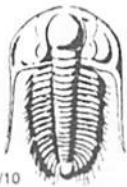
Rec	Feet of	%gas	%oil	%water	%mud
<u>30</u>	<u>Mud</u>				
Rec	Feet of	%gas	%oil	%water	%mud
Rec	Feet of	%gas	%oil	%water	%mud
Rec	Feet of	%gas	%oil	%water	%mud
Rec	Feet of	%gas	%oil	%water	%mud

Rec Total 30 BHT 99 Gravity - API RW - @ - ° F Chlorides - ppm

(A) Initial Hydrostatic <u>1582</u>	<input checked="" type="checkbox"/> Test 1150	T-On Location <u>1405</u>
(B) First Initial Flow <u>23</u>	<input checked="" type="checkbox"/> Jars 250	T-Started <u>1540</u>
(C) First Final Flow <u>35</u>	<input checked="" type="checkbox"/> Safety Joint 75	T-Open <u>1725</u>
(D) Initial Shut-In <u>559</u>	<input type="checkbox"/> Circ Sub	T-Pulled <u>2025</u>
(E) Second Initial Flow <u>37</u>	<input type="checkbox"/> Hourly Standby	T-Out <u>2158</u>
(F) Second Final Flow <u>47</u>	<input checked="" type="checkbox"/> Mileage <u>32 RT</u> 49.60	Comments
(G) Final Shut-In <u>551</u>	<input type="checkbox"/> Sampler	
(H) Final Hydrostatic <u>1563</u>	<input type="checkbox"/> Straddle	<input type="checkbox"/> Ruined Shale Packer
	<input type="checkbox"/> Shale Packer	<input type="checkbox"/> Ruined Packer
Initial Open <u>30</u>	<input type="checkbox"/> Extra Packer	<input type="checkbox"/> Extra Copies
Initial Shut-In <u>60</u>	<input type="checkbox"/> Extra Recorder	Sub Total <u>0</u>
Final Flow <u>30</u>	<input type="checkbox"/> Day Standby	Total <u>1524.60</u>
Final Shut-In <u>60</u>	<input type="checkbox"/> Accessibility	MP/DST Disc't
	Sub Total <u>1524.60</u>	

Approved By [Signature] Our Representative Ray Schwager *Thank you*

Trilobite Testing Inc. shall not be liable for damaged of any kind of the property or personnel of the one for whom a test is made, or for any loss suffered or sustained, directly or indirectly, through the use of its equipment, or its statements or opinion concerning the results of any test, tools lost or damaged in the hole shall be paid for at cost by the party for whom the test is made.



TRILOBITE TESTING INC.

1515 Commerce Parkway • Hays, Kansas 67601

Test Ticket

NO. 51632

4/10

Well Name & No. Schwind Unit #1-36 Test No. 2 Date 1-20-13
 Company Murfin Drilling Co Inc Elevation 1989 KB 1978 GL
 Address 250 N. WATER ST 300 WICHITA, KS 67202-1216
 Co. Rep / Geo. Robert Hendrix Rig Murfin rig 2
 Location: Sec. 36 Twp. 15^s Rge. 19^w Co. Ellis State Ks

Interval Tested 3427-3495 Zone Tested LKC I-K
 Anchor Length 68 Drill Pipe Run 3220 Mud Wt. 9
 Top Packer Depth 3422 Drill Collars Run 210 Vis 57
 Bottom Packer Depth 3427 Wt. Pipe Run - WL 6.8
 Total Depth 3495 Chlorides 5600 ppm System LCM 2[#]

Blow Description IFP - WEAK Blow died in 20 min
ISIP - NO Blow
FFP - NO Blow
FSIP - NO Blow

Rec	Feet of	%gas	%oil	%water	%mud
<u>10</u>	<u>Mud</u>				
	<u>w/shallow oil</u>				

Rec Total 10 BHT 102 Gravity - API RW - @ - ° F Chlorides - ppm

(A) Initial Hydrostatic <u>1681</u>	<input checked="" type="checkbox"/> Test <u>1150</u>	T-On Location <u>1620</u>
(B) First Initial Flow <u>19</u>	<input checked="" type="checkbox"/> Jars <u>250</u>	T-Started <u>1645</u>
(C) First Final Flow <u>22</u>	<input checked="" type="checkbox"/> Safety Joint <u>75</u>	T-Open <u>1825</u>
(D) Initial Shut-In <u>54</u>	<input type="checkbox"/> Circ Sub	T-Pulled <u>2125</u>
(E) Second Initial Flow <u>23</u>	<input type="checkbox"/> Hourly Standby	T-Out <u>2306</u>
(F) Second Final Flow <u>24</u>	<input checked="" type="checkbox"/> Mileage <u>32RT</u> 49.60	Comments
(G) Final Shut-In <u>38</u>	<input type="checkbox"/> Sampler	
(H) Final Hydrostatic <u>1681</u>	<input type="checkbox"/> Straddle	<input type="checkbox"/> Ruined Shale Packer
	<input type="checkbox"/> Shale Packer	<input type="checkbox"/> Ruined Packer
	<input type="checkbox"/> Extra Packer	<input type="checkbox"/> Extra Copies
	<input type="checkbox"/> Extra Recorder	Sub Total <u>0</u>
	<input type="checkbox"/> Day Standby	Total <u>1524.60</u>
	<input type="checkbox"/> Accessibility	MP/DST Disc't

Initial Open 30
 Initial Shut-In 60
 Final Flow 30
 Final Shut-In 60

Approved By [Signature] Our Representative RAY Schwager Thank you

Trilobite Testing Inc. shall not be liable for damaged of any kind of the property or personnel of the one for whom a test is made, or for any loss suffered or sustained, directly or indirectly, through the use of its equipment, or its statements or opinion concerning the results of any test, tools lost or damaged in the hole shall be paid for at cost by the party for whom the test is made.



TRILOBITE TESTING INC.

1515 Commerce Parkway • Hays, Kansas 67601

Test Ticket

NO. 51633

4/10

Well Name & No. Schwind Unit #1-36 Test No. 3 Date 1-21-13
 Company Murfin Drilling Co Inc Elevation 1989 KB 1978 GL
 Address 250 N. WATER STe 300 WICHITA, Ks 67202-1216
 Co. Rep / Geo. Robert Hendrix Rig Murfin rig 2
 Location: Sec. 36 Twp. 15 Rge. 19^w Co. ELLIS State Ks

Interval Tested 3527-3572 Zone Tested Lower Pawnee
 Anchor Length 45 Drill Pipe Run 3314 Mud Wt. 9.2
 Top Packer Depth 3522 Drill Collars Run 210 Vis 60
 Bottom Packer Depth 3527 Wt. Pipe Run - WL 6.8
 Total Depth 3572 Chlorides 5600 ppm System LCM 2#

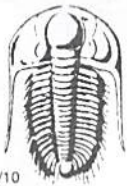
Blow Description IFP - weak surface blow died in 25 minutes
ISIP - NO BLOW
FFP - few bubbles when tool opened then died
FSIP - NO BLOW

Rec	Feet of	%gas	%oil	%water	%mud
<u>5</u>	<u>Mud</u>				
Rec	Feet of	%gas	%oil	%water	%mud
Rec	Feet of	%gas	%oil	%water	%mud
Rec	Feet of	%gas	%oil	%water	%mud
Rec	Feet of	%gas	%oil	%water	%mud

Rec Total 5 BHT 101 Gravity - API RW - @ - °F Chlorides - ppm
 (A) Initial Hydrostatic 1803 Test 1150 T-On Location 1105
 (B) First Initial Flow 22 Jars 250 T-Started 1145
 (C) First Final Flow 22 Safety Joint 75 T-Open 13:30
 (D) Initial Shut-In 60 Circ Sub - T-Pulled 1630
 (E) Second Initial Flow 22 Hourly Standby - T-Out 1810
 (F) Second Final Flow 24 Mileage 32RT 49.60 Comments _____
 (G) Final Shut-In 46 Sampler _____
 (H) Final Hydrostatic 1759 Straddle _____

Ruined Shale Packer _____
 Ruined Packer _____
 Extra Copies _____
 Initial Open 30
 Initial Shut-In 60
 Final Flow 30
 Final Shut-In 60
 Sub Total 0
 Total 1524.60
 MP/DST Disc't _____

Approved By [Signature] Our Representative RAY SCHWAGER hant 904
 TriLOBITE Testing Inc. shall not be liable for damaged of any kind of the property or personnel of the one for whom a test is made, or for any loss suffered or sustained, directly or indirectly, through the use of its equipment, or its statements or opinion concerning the results of any test, tools lost or damaged in the hole shall be paid for at cost by the party for whom the test is made.



TRILOBITE TESTING INC.

1515 Commerce Parkway • Hays, Kansas 67601

Test Ticket

NO. 51634

4/10

Well Name & No. Schwind Unit #1-36 Test No. 4 Date 1-21-13
 Company MURFIN DRILLING CO INC Elevation 1989 KB 1978 GL
 Address 250 N. WATER ST 300 WICHITA, KS 67202-1216
 Co. Rep / Geo. Robert Hendrix Rig Murfin rig 2
 Location: Sec. 36 Twp. 15^{SS} Rge. 19^W Co. ELLIX State KS

Interval Tested 3573-3593 Zone Tested Arbuckle
 Anchor Length 20 Drill Pipe Run 3343 Mud Wt. 9
 Top Packer Depth 3578 Drill Collars Run 210 Vis 55
 Bottom Packer Depth 3573 Wt. Pipe Run - WL 7.2
 Total Depth 3593 Chlorides 7700 ppm System LCM 8#
 Blow Description IFP - WEAK TO A GOOD BLOW 1/2" TO 7 1/2" BLOW
ISIP - NO BLOW
FFP - WEAK TO A FAIR BLOW 1/2" TO 6" BLOW
FSIP - NO BLOW

Rec	Feet of	%gas	%oil	%water	%mud
300	WATER				
100	SOC MW		1	79	20
40	CO				

Rec Total 440 BHT 112 Gravity 32 API RW .27 @ 50° F Chlorides 36000 ppm

(A) Initial Hydrostatic <u>1722</u>	<input checked="" type="checkbox"/> Test 1150	T-On Location <u>2325</u>
(B) First Initial Flow <u>18</u>	<input checked="" type="checkbox"/> Jars 250	T-Started <u>2350</u>
(C) First Final Flow <u>131</u>	<input checked="" type="checkbox"/> Safety Joint 75	T-Open <u>0135</u>
(D) Initial Shut-In <u>1168</u>	<input type="checkbox"/> Circ Sub	T-Pulled <u>0535</u>
(E) Second Initial Flow <u>138</u>	<input type="checkbox"/> Hourly Standby	T-Out <u>0750</u>
(F) Second Final Flow <u>210</u>	<input checked="" type="checkbox"/> Mileage <u>32 RT</u> 49.60	Comments _____
(G) Final Shut-In <u>1176</u>	<input type="checkbox"/> Sampler	
(H) Final Hydrostatic <u>1715</u>	<input type="checkbox"/> Straddle	<input type="checkbox"/> Ruined Shale Packer
	<input type="checkbox"/> Shale Packer	<input type="checkbox"/> Ruined Packer
Initial Open <u>30</u>	<input type="checkbox"/> Extra Packer	<input type="checkbox"/> Extra Copies
Initial Shut-In <u>60</u>	<input type="checkbox"/> Extra Recorder	Sub Total <u>0</u>
Final Flow <u>60</u>	<input type="checkbox"/> Day Standby	Total <u>1524.60</u>
Final Shut-In <u>90</u>	<input type="checkbox"/> Accessibility	MP/DST Disc't _____
	Sub Total <u>1524.60</u>	

Approved By [Signature] Our Representative Ray Schwager Thank you

TriLOBITE Testing Inc. shall not be liable for damaged of any kind of the property or personnel of the one for whom a test is made, or for any loss suffered or sustained directly or indirectly, through the use of its equipment, or its statements or opinion concerning the results of any test, tools lost or damaged in the hole shall be paid for at cost by the party for whom the test is made.



TRILOBITE TESTING INC.

1515 Commerce Parkway • Hays, Kansas 67601

Test Ticket

NO. 51635

4/10

Well Name & No. Schwind Unit #1-36 Test No. 5 Date 1-22-13
 Company Murfin Drilling Co. Inc Elevation 1989 KB 1978 GL
 Address 250 N. WATER STE 300 WICHITA, KS 67202-1216
 Co. Rep / Geo. Robert Hendrix Rig Murfin rig 2
 Location: Sec. 36 Twp. 15^s Rge. 19^w Co. Ellis State Ks

Interval Tested 3599-3613 Zone Tested Reagan sd.
 Anchor Length 14 Drill Pipe Run 3376 Mud Wt. 9.1
 Top Packer Depth 3599-3594 Drill Collars Run 210 Vis 46
 Bottom Packer Depth 3613 Wt. Pipe Run - WL 9.6
 Total Depth 3635 Chlorides 12900 ppm System LCM 7#

Blow Description IFP - STRONG Blow Thru-out
ISIP - NO Blow
FFP - STRONG Blow Thru-out
FSIP - NO Blow

Rec	Feet of	%gas	%oil	%water	%mud
<u>180</u>	<u>mw</u>		<u>85</u>	<u>15</u>	
<u>1560</u>	<u>WATER</u>				

Rec Total 1740 BHT 112 Gravity - API RW .18 @ 63 ° F Chlorides 44000 ppm

(A) Initial Hydrostatic <u>1857</u>	<input checked="" type="checkbox"/> Test 1150	T-On Location <u>1445</u>
(B) First Initial Flow <u>823</u>	<input checked="" type="checkbox"/> Jars 250	T-Started <u>1530</u>
(C) First Final Flow <u>938</u>	<input checked="" type="checkbox"/> Safety Joint 75	T-Open <u>1700</u>
(D) Initial Shut-In <u>1206</u>	<input type="checkbox"/> Circ Sub	T-Pulled <u>1910</u>
(E) Second Initial Flow <u>967</u>	<input type="checkbox"/> Hourly Standby	T-Out <u>2128</u>
(F) Second Final Flow <u>1022</u>	<input checked="" type="checkbox"/> Mileage <u>32RT</u> 49.60	Comments
(G) Final Shut-In <u>1206</u>	<input type="checkbox"/> Sampler	
(H) Final Hydrostatic <u>1750</u>	<input checked="" type="checkbox"/> Straddle 600	
	<input type="checkbox"/> Shale Packer	<input type="checkbox"/> Ruined Shale Packer
	<input type="checkbox"/> Extra Packer	<input type="checkbox"/> Ruined Packer
	<input type="checkbox"/> Extra Recorder	<input type="checkbox"/> Extra Copies

Initial Open 5
 Initial Shut-In 60
 Final Flow 5
 Final Shut-In 60

Approved By R. Hendrix Our Representative RAY SCHWAGER *Thank you*
 Sub Total 2124.60

Trilobite Testing Inc. shall not be liable for damaged of any kind of the property or personnel of the one for whom a test is made, or for any loss suffered or sustained, directly or indirectly, through the use of its equipment, or its statements or opinion concerning the results of any test, tools lost or damaged in the hole shall be paid for at cost by the party for whom the test is made.