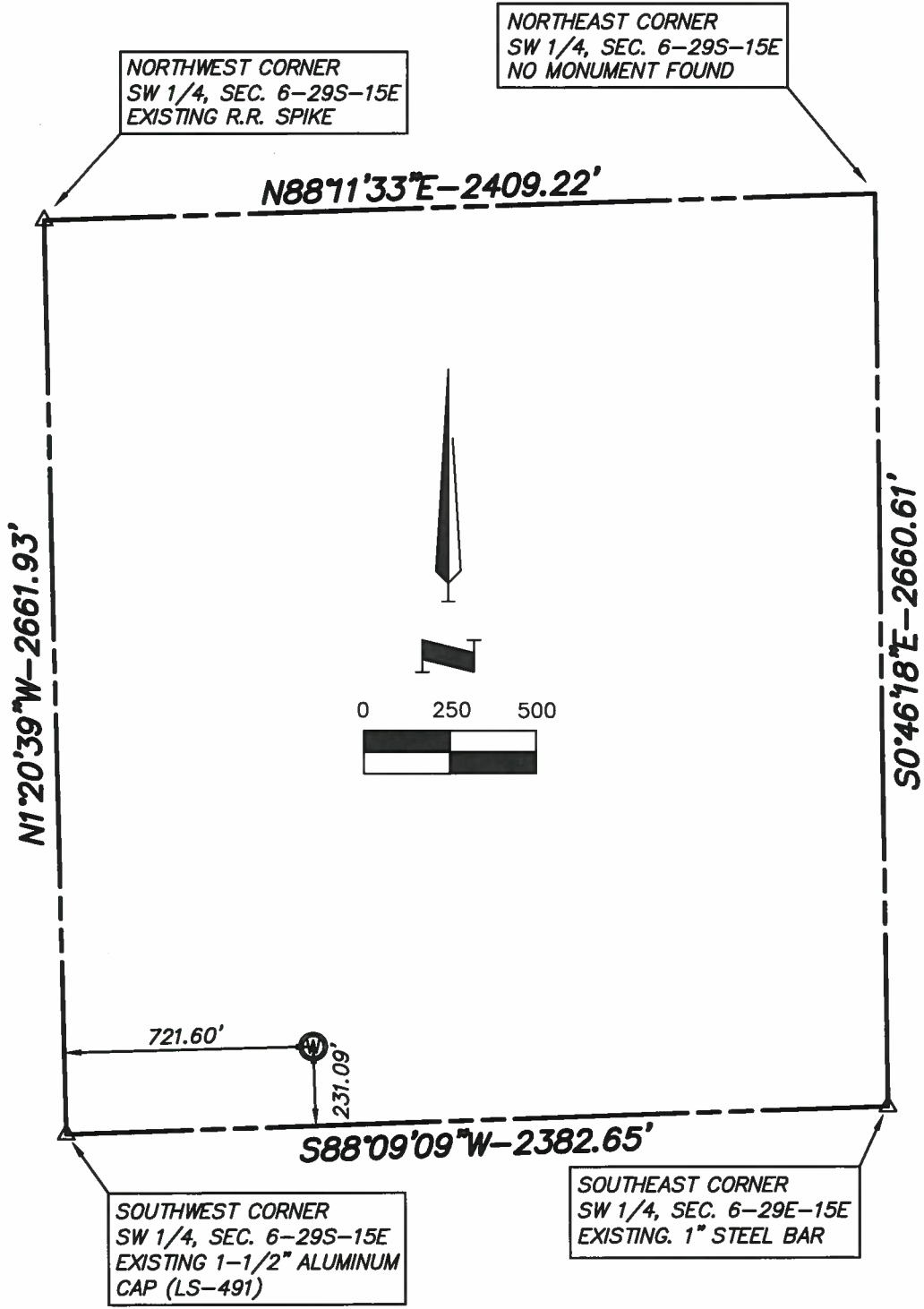


HENDRY PW DISPOSAL WELL
 Sec 6, T 29 S, R 15 E
 WILSON COUNTY, KANSAS



Description	Ground Elevation	NAD 83 Latitude	NAD 83 Longitude	NAD 27 Latitude	NAD 27 Longitude
HENDRY PW WELL	904.09	N37°32'42.37"	W95°48'44.86"	N37°32'42.19"	W95°48'43.93"

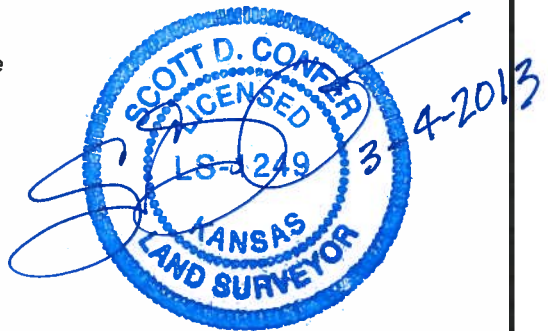
GENERAL NOTES:

The bearings shown hereon are based on the State Plane Coordinate System, Kansas South Zone, NAD83

PREPARED FOR:
 WILSON COUNTY HOLDINGS, LLC



SHAFER, KLINE & WARREN, INC.
 11250 CORPORATE AVENUE, LENEXA, KANSAS 66219
 PHONE: 913-888-7800 FAX: 913-888-7868
<http://www.skw-inc.com>



PROJECT NO. 120515-030	DATE 3/4/13	BY SAC
------------------------	-------------	--------