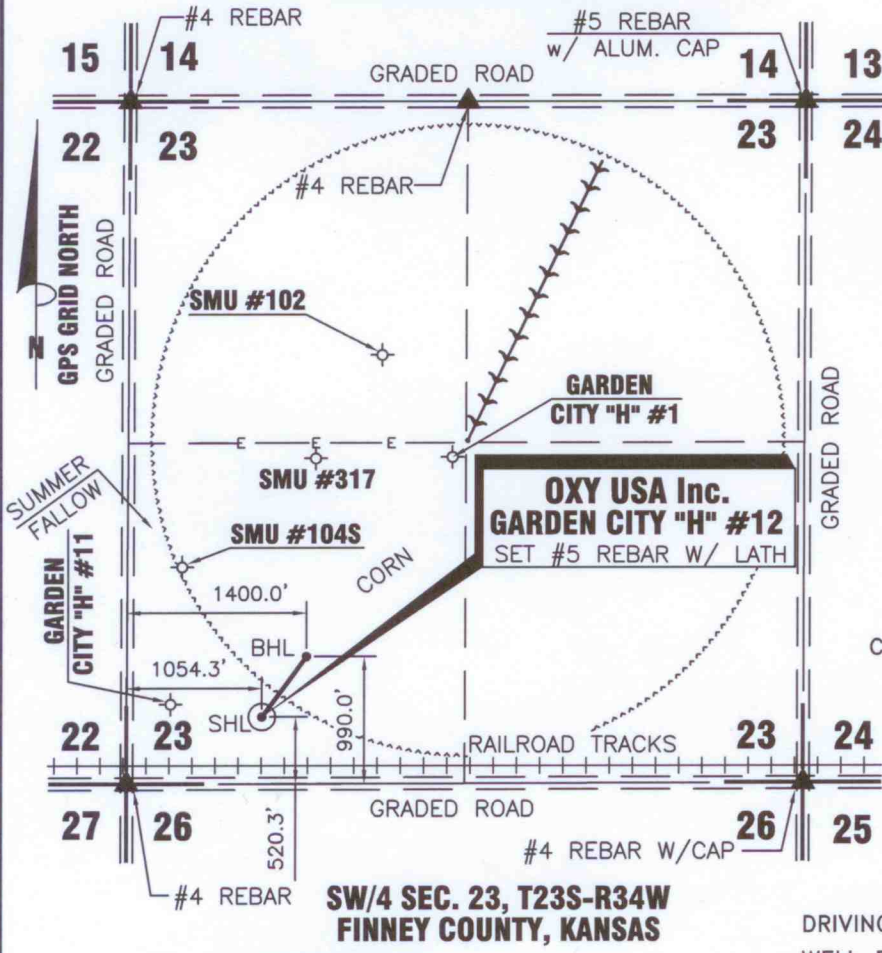


T23S-R34W



DATE 5/2/2013

OPERATOR OXY U.S.A.

WELL NAME GARDEN CITY "H" #12

LOCATION SW/4 SEC.23, T23S-R34W

SURFACE HOLE LOCATION

FOOTAGES & 520.3' F S L

RELATIONS 1054.3' F W L

ELEVATION 2941.26'

BOTTOM HOLE LOCATION

FOOTAGES & 990.0' F S L

RELATIONS 1400.0' F W L

CALC. ELEVATION -1823.18'

DISTANCE TO EXISTING WELL
719.35' GARDEN CITY "H" #11

AUTHORIZED BY BETH HICKERT

CROP SUMMER FALLOW

SURFACE HOLE LOCATION
LATITUDE 38°02'02.11314" N = 38.033920° N
LONGITUDE 101°01'31.45329" W = 101.025404° W

STATE PLANE COORD. X = 1272721.60
KANSAS SOUTH ZONE
NAD 27 Y = 507688.36

BOTTOM HOLE LOCATION
LATITUDE 38°02'06.76364" N = 38.035212° N
LONGITUDE 101°01'27.10894" W = 101.024197° W

STATE PLANE COORD. X = 1273081.78
KANSAS SOUTH ZONE
NAD 27 Y = 508149.16

NOTE: CONTRACTOR TO CONTACT ONE CALL @ 1-800-DIG SAFE PRIOR TO ANY EXCAVATION OR CONSTRUCTION.

DRIVING DIRECTIONS USED TO STAKE WELL FROM KNOWN LANDMARK OR CITY FROM:
FROM THE INTERSECTION OF HWY #50 & FAS #1657, 2.0 MILES WEST OF HOLCOMB, KS; THENCE NORTH 2.1 MILES ON FAS #1657; THENCE EAST 1054.3 FT. INTO.



OXY USA Inc. 1117 N. HIGHWAY 27
P.O. DRAWER 330
ELKHART, KANSAS 67950
(620)697-2500

PROPOSED WELL LOCATION OF THE GARDEN CITY "H" #12 LOCATED IN THE SW/4 SEC. 23, T23S - R34W FINNEY COUNTY, KANSAS

NO.	DWN.	REVISIONS	DATE

SCALE: 1"=1500' DATE: 5/2/2013

WORK ORDER NO.:

HARDER
AND ASSOCIATES "locating our world"
LAND SURVEYING - GPS SPECIALISTS
P.O. BOX 518 514 MORTON
Elkhart, Kansas 67950
Phone: (620) 697-2696
Fax: (620) 697-4175
E-MAIL: tharder@elkhart.com

CO KS NM OK

DRAWN BY: DRF CHECKED BY: TVH APPROVED BY: AUTHORIZED BY: B. HICKERT