



DRILL STEM TEST REPORT

Prepared For: **Jason Oil Co LLC**

PO Box 701
Russell KS 67665-0701

ATTN: Jeff Lawler

Schwein #4

30-14s-14w Russell,KS

Start Date: 2013.03.09 @ 03:55:00

End Date: 2013.03.09 @ 10:45:00

Job Ticket #: 52057 DST #: 1

Trilobite Testing, Inc
PO Box 362 Hays, KS 67601
ph: 785-625-4778 fax: 785-625-5620

Printed: 2013.03.15 @ 14:02:58



TRILOBITE TESTING, INC.

DRILL STEM TEST REPORT

Jason Oil Co LLC
 PO Box 701
 Russell KS 67665-0701
 ATTN: Jeff Lawler

30-14s-14w Russell, KS
Schwein #4
 Job Ticket: 52057 **DST#: 1**
 Test Start: 2013.03.09 @ 03:55:00

GENERAL INFORMATION:

Formation: **Arbuckle**
 Deviated: No Whipstock: ft (KB)
 Time Tool Opened: 06:00:40
 Time Test Ended: 10:45:00
 Interval: **3196.00 ft (KB) To 3243.00 ft (KB) (TVD)**
 Total Depth: 3243.00 ft (KB) (TVD)
 Hole Diameter: 7.88 inches Hole Condition: Fair
 Test Type: Conventional Bottom Hole (Initial)
 Tester: Jim Svaty
 Unit No: 41
 Reference Elevations: 1812.00 ft (KB)
 1805.00 ft (CF)
 KB to GR/CF: 7.00 ft

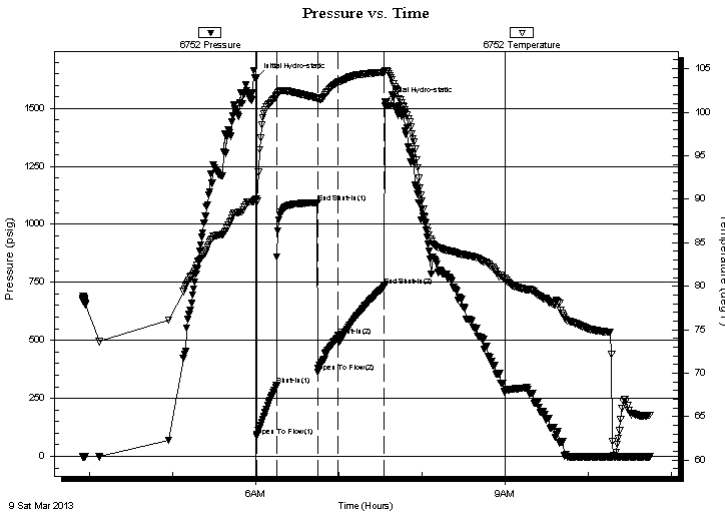
Serial #: 6752

Inside

Press @ Run Depth: 520.63 psig @ 3207.00 ft (KB) Capacity: 8000.00 psig
 Start Date: 2013.03.09 End Date: 2013.03.09 Last Calib.: 2013.03.09
 Start Time: 03:55:01 End Time: 10:45:00 Time On Btm: 2013.03.09 @ 06:00:30
 Time Off Btm: 2013.03.09 @ 07:33:10

TEST COMMENT: 15-IFP- BOB in 1 min. 40 sec.
 30-ISIP- Weak Surface Blow
 15-FFP- BOB in 1 min. 40 sec.
 30-FSIP- BOB in 2 min. 30 sec.

PRESSURE SUMMARY



Time (Min.)	Pressure (psig)	Temp (deg F)	Annotation
0	1633.65	90.02	Initial Hydro-static
1	85.22	89.62	Open To Flow (1)
15	304.83	101.86	Shut-In(1)
44	1092.78	101.63	End Shut-In(1)
45	363.94	101.46	Open To Flow (2)
59	520.63	103.45	Shut-In(2)
93	733.26	104.60	End Shut-In(2)
93	1527.64	104.73	Final Hydro-static

Recovery

Length (ft)	Description	Volume (bbl)
504.00	MCW 2% m 98% w	5.70
378.00	GWCO 10% g 28% w 62% o	5.30
378.00	GM&OCW 25% g 10% m 20% o 45% w	5.30
378.00	GM&OCW 20% g 20% m 30% o 30% w	5.30
0.00	126 GIP	0.00

Gas Rates

Choke (inches)	Pressure (psig)	Gas Rate (Mcf/d)



**TRILOBITE
TESTING, INC.**

DRILL STEM TEST REPORT

TOOL DIAGRAM

Jason Oil Co LLC

30-14s-14w Russell,KS

PO Box 701
Russell KS 67665-0701

Schwein #4

Job Ticket: 52057

DST#: 1

ATTN: Jeff Lawler

Test Start: 2013.03.09 @ 03:55:00

Tool Information

Drill Pipe:	Length: 3036.00 ft	Diameter: 3.80 inches	Volume: 42.59 bbl	Tool Weight: 2500.00 lb
Heavy Wt. Pipe:	Length: 0.00 ft	Diameter: 2.75 inches	Volume: 0.00 bbl	Weight set on Packer: 25000.00 lb
Drill Collar:	Length: 150.00 ft	Diameter: 2.25 inches	Volume: 0.74 bbl	Weight to Pull Loose: 48000.00 lb
			<u>Total Volume: 43.33 bbl</u>	Tool Chased 0.00 ft
Drill Pipe Above KB:	12.00 ft			String Weight: Initial 40000.00 lb
Depth to Top Packer:	3196.00 ft			Final 45000.00 lb
Depth to Bottom Packer:	ft			
Interval between Packers:	47.00 ft			
Tool Length:	69.00 ft			
Number of Packers:	2	Diameter: 6.75 inches		

Tool Comments:

Tool Description	Length (ft)	Serial No.	Position	Depth (ft)	Accum. Lengths
------------------	-------------	------------	----------	------------	----------------

Shut In Tool	5.00			3179.00	
Hydraulic tool	5.00			3184.00	
Safety Joint	2.00			3186.00	
Packer	5.00			3191.00	22.00 Bottom Of Top Packer
Packer	5.00			3196.00	
Stubb	1.00			3197.00	
Perforations	10.00			3207.00	
Recorder	0.00	6752	Inside	3207.00	
Recorder	0.00	8322	Outside	3207.00	
Change Over Sub	1.00			3208.00	
Blank Spacing	31.00			3239.00	
Change Over Sub	1.00			3240.00	
Bullnose	3.00			3243.00	47.00 Bottom Packers & Anchor

Total Tool Length: 69.00



**TRILOBITE
TESTING, INC.**

DRILL STEM TEST REPORT

FLUID SUMMARY

Jason Oil Co LLC

30-14s-14w Russell,KS

PO Box 701
Russell KS 67665-0701

Schwein #4

Job Ticket: 52057

DST#: 1

ATTN: Jeff Lawler

Test Start: 2013.03.09 @ 03:55:00

Mud and Cushion Information

Mud Type: Gel Chem

Cushion Type:

Oil API:

deg API

Mud Weight: 9.00 lb/gal

Cushion Length:

ft

Water Salinity:

33000 ppm

Viscosity: 54.00 sec/qt

Cushion Volume:

bbbl

Water Loss: 9.58 in³

Gas Cushion Type:

Resistivity: ohm.m

Gas Cushion Pressure:

psig

Salinity: 4800.00 ppm

Filter Cake: inches

Recovery Information

Recovery Table

Length ft	Description	Volume bbbl
504.00	MCW 2% <i>m</i> 98% <i>w</i>	5.703
378.00	GWCO 10% <i>g</i> 28% <i>w</i> 62% <i>o</i>	5.302
378.00	GM&OCW 25% <i>g</i> 10% <i>m</i> 20% <i>o</i> 45% <i>w</i>	5.302
378.00	GM&OCW 20% <i>g</i> 20% <i>m</i> 30% <i>o</i> 30% <i>w</i>	5.302
0.00	126 GIP	0.000

Total Length: 1638.00 ft Total Volume: 21.609 bbl

Num Fluid Samples: 0

Num Gas Bombs: 0

Serial #:

Laboratory Name:

Laboratory Location:

Recovery Comments: .243 @ 61

Serial #: 6752

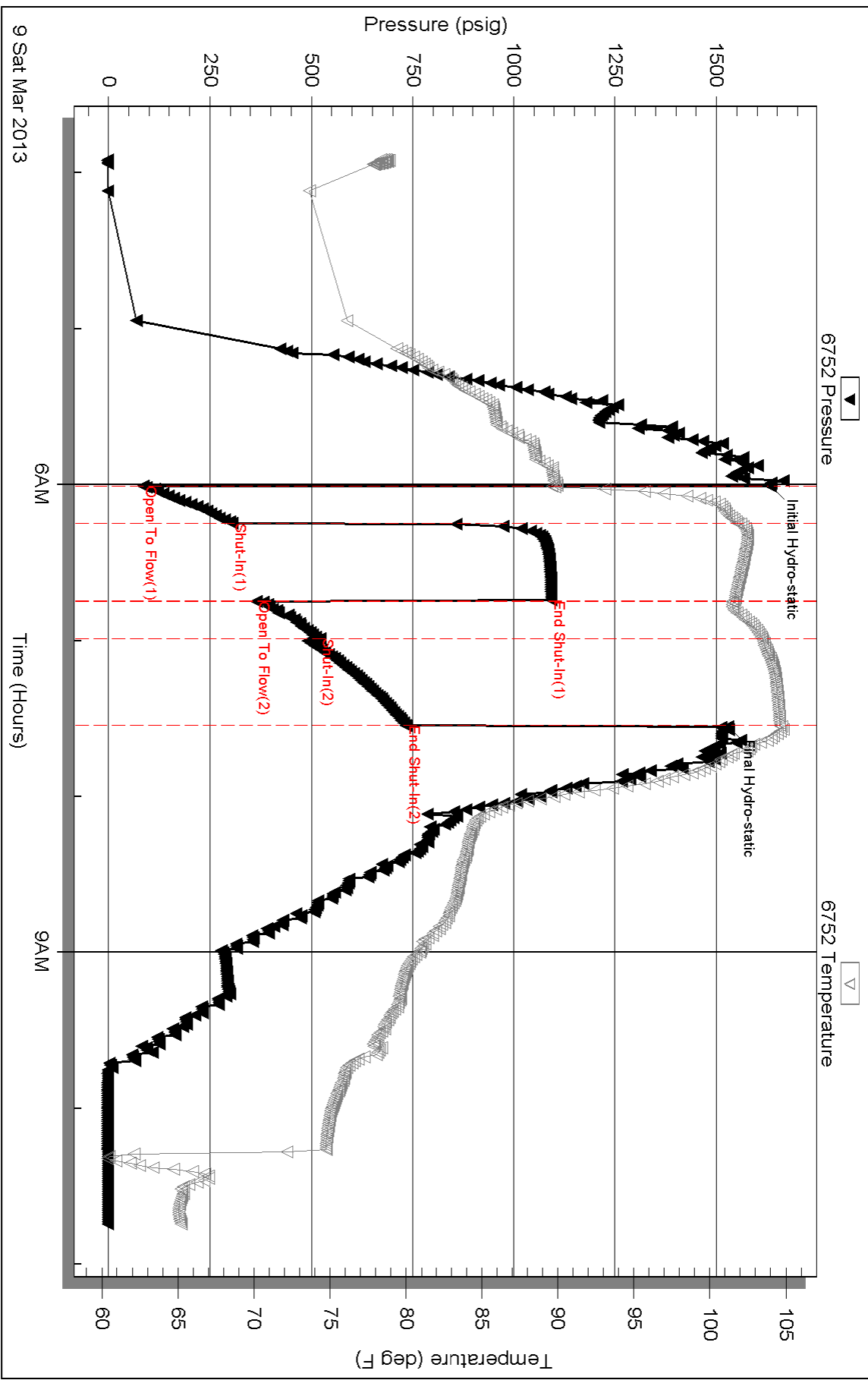
Inside

Jason Oil Co LLC

Schw ein #4

DST Test Number: 1

Pressure vs. Time

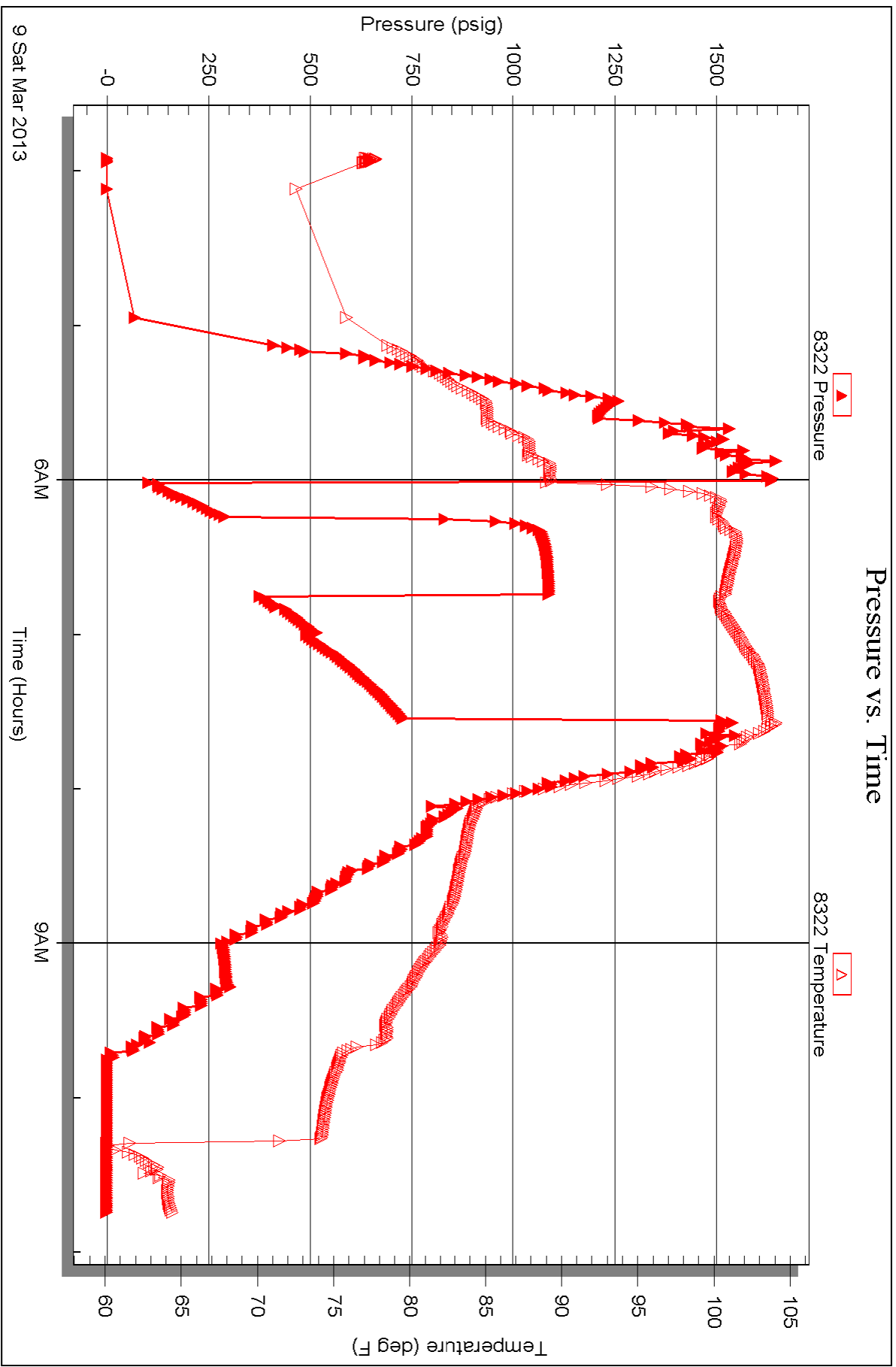


Serial #: 8322

Outside Jason Oil Co LLC

Schw ein #4

DST Test Number: 1





TRILOBITE TESTING INC.

1515 Commerce Parkway • Hays, Kansas 67601

Test Ticket

NO. 52057

Well Name & No. Schwein #4 Test No. 1 Date 3-9-13
 Company JASON Oil Co., LLC Elevation 1812 KB 1805 GL
 Address 3718-83rd St P.O. Box 701 Russell Ks. 67665-0701
 Co. Rep / Geo. JEFF LAWLER Rig Southerwind #4
 Location: Sec. 30 Twp. 14^S Rge. 14^W Co. Russell State Ks.

Interval Tested 47 Zone Tested Arbuckle
 Anchor Length 3196-3243 Drill Pipe Run 3036 Mud Wt. 9.2
 Top Packer Depth 3191 Drill Collars Run 150 Vis 54
 Bottom Packer Depth 3196 Wt. Pipe Run Ø WL 9.6
 Total Depth 3243 Chlorides 4800 ppm System LCM N/A

Blow Description IFF-BOB in 40sec.
ISIP-Weak Surface Blow
FFP-BOB in 40sec.
FSIP-BOB in 2min 30sec.

Rec	Feet of	%gas	%oil	%water	%mud
<u>504</u>	<u>mcw</u>		<u>98</u>	<u>2</u>	
<u>378</u>	<u>SWCO</u>	<u>10</u>	<u>62</u>		
<u>378</u>	<u>DM+OCW</u>	<u>25</u>	<u>20</u>	<u>45</u>	<u>10</u>
<u>378</u>	<u>DM+OCW</u>	<u>20</u>	<u>30</u>	<u>30</u>	<u>20</u>
	<u>126 DIP</u>				

Rec Total 1638 BHT 104 Gravity API RW 243 @ 61 °F Chlorides 33000 ppm

(A) Initial Hydrostatic 1633 Test 1150 T-On Location 02:40
 (B) First Initial Flow 85 Jars 03:55
 (C) First Final Flow 304 Safety Joint 75 T-Open 06:00
 (D) Initial Shut-In 1092 Circ Sub 07:30
 (E) Second Initial Flow 363 Hourly Standby 10:45
 (F) Second Final Flow 520 Mileage 46 RT 71.30
 (G) Final Shut-In 733 Sampler
 (H) Final Hydrostatic 1527 Straddle
 Shale Packer
 Ruined Shale Packer
 Ruined Packer

Initial Open 15 Extra Packer
 Initial Shut-In 30 Extra Recorder
 Final Flow 15 Day Standby
 Final Shut-In 30 Accessibility
 Sub Total 1296.30
 Sub Total 1296.30 MP/DST Disc't

Approved By _____ Our Representative [Signature] Thanks!
 Trilobite Testing Inc. shall not be liable for damaged of any kind of the property or personnel of the one for whom a test is made, or for any loss suffered or sustained, directly or indirectly, through the use of its equipment, or its statements or opinion concerning the results of any test, tools lost or damaged in the hole shall be paid for at cost by the party for whom the test is made.