



PAGE	CUST NO	INVOICE DATE
1 of 1	1003965	04/30/2013
INVOICE NUMBER		
1717 - 91177715		

Liberal (620) 624-2277
 B STELBAR OIL CORPORATION INC
 I 1625 N WATERFRONT PKWY STE 200
 L WICHITA
 L KS US 67206
 T
 O **ATTN:** ACCOUNTS PAYABLE

J LEASE NAME Johns Enterprises #2-2
O LOCATION
B COUNTY Morton
S STATE KS
I JOB DESCRIPTION Cement-New Well Casing/Pi
T JOB CONTACT
E

JOB #	EQUIPMENT #	PURCHASE ORDER NO.	TERMS	DUE DATE
40590537	19842		Net - 30 days	05/30/2013

	QTY	U of M	UNIT PRICE	INVOICE AMOUNT
For Service Dates: 04/29/2013 to 04/29/2013				
0040590537				
171704141A Cement-New Well Casing/Pi 04/29/2013 PTA				
60/40 POZ	170.00	EA	9.60	1,632.00 T
Cement Gel	294.00	EA	0.20	58.80 T
Heavy Equipment Mileage	150.00	MI	5.60	840.00
Blending & Mixing Service Charge	170.00	BAG	1.12	190.40
"Proppant & Bulk Del. Chgs., per ton mil	551.25	EA	1.28	705.60
Depth Charge; 1001'-2000'	1.00	EA	1,200.00	1,200.00
"Unit Mileage Chg (PU, cars one way)"	75.00	MI	3.40	255.00
"Service Supervisor, first 8 hrs on loc.	1.00	EA	140.00	140.00

PLEASE REMIT TO:	SEND OTHER CORRESPONDENCE TO:	SUB TOTAL	5,021.80
BASIC ENERGY SERVICES, LP	BASIC ENERGY SERVICES, LP	TAX	106.52
PO BOX 841903	801 CHERRY ST, STE 2100	INVOICE TOTAL	5,128.32
DALLAS, TX 75284-1903	FORT WORTH, TX 76102		



BASICSM
ENERGY SERVICES
Liberal, Kansas

Cement Report

Customer Stelbar	Lease No.	Date 4-29-13
Lease Johns Enterprises	Well # 2-2	Service Receipt
Casing Depth	County	State KS
Job Type	Formation	Legal Description 2-31-41

Pipe Data		Perforating Data		Cement Data
Casing size	Tubing Size	Shots/Ft		Lead 170 SKS @ 13.5 PPG 60/40 Poz 4% Total Gel Tail in
Depth	Depth	From	To	
Volume	Volume	From	To	
Max Press	Max Press	From	To	
Well Connection	Annulus Vol.	From	To	
Plug Depth	Packer Depth	From	To	

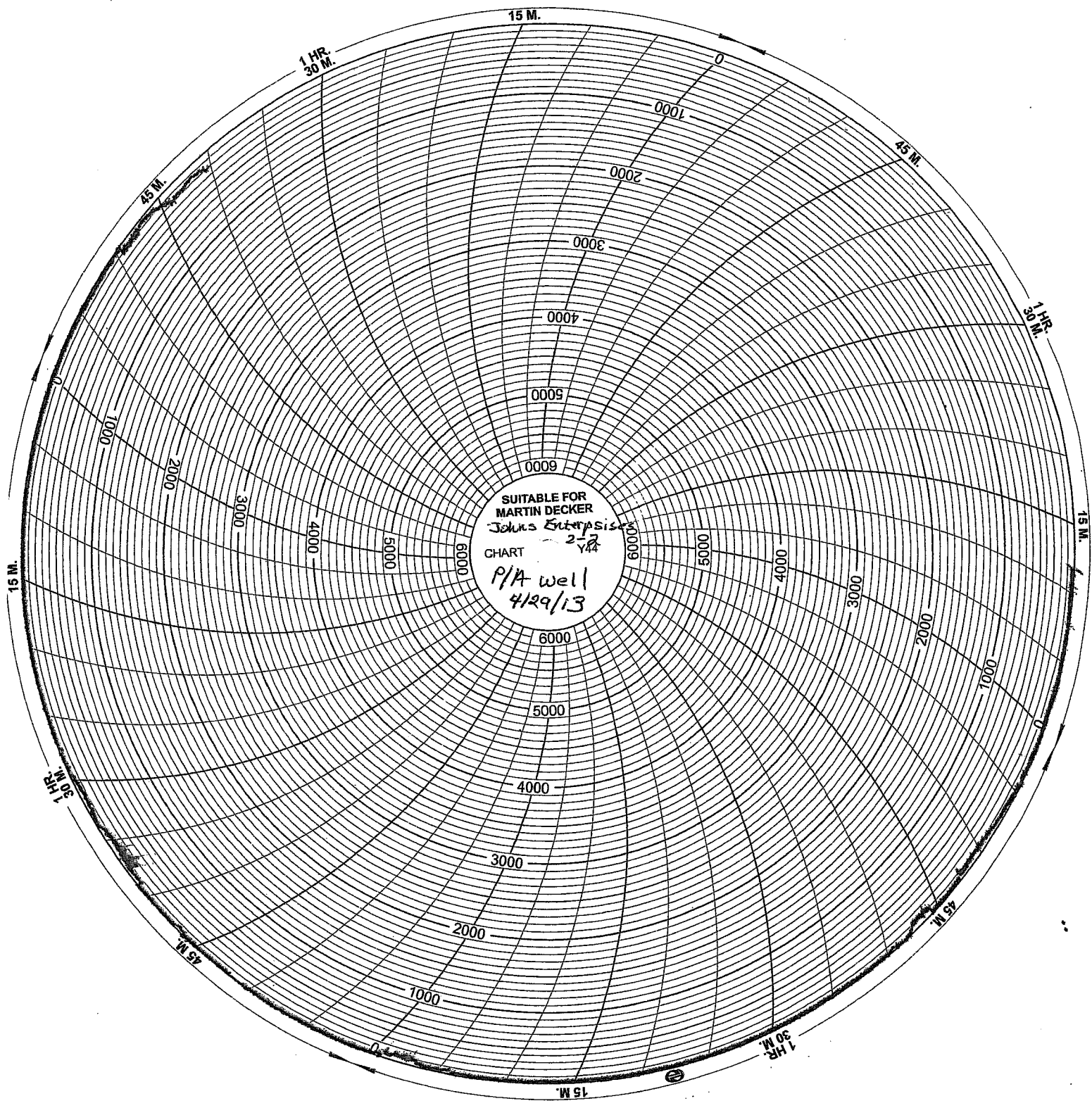
Time	Casing Pressure	Tubing Pressure	Bbls. Pumped	Rate	Service Log
1330					On location - Rig up
1509					Safety Meeting
1518	2,000				Pressure Test
1520	0		10	3.5	Pump 10 bbls Ahead (1st)
1527	0		13.3	3.5	Pump 50 SKS @ 13.5 PPG 60/40 Poz 1650' ft
1534	0		18	3.5	Displace with 18 bbls
1541					Shut Down
1615	0		20	3.5	Pump 20 bbl of Water Ahead (2nd)
1625	0		13.3	3.5	Pump 50 SKS @ 13.5 PPG 60/40 Poz 540' ft
1633	0		3	3.5	Displace with 3 bbls
1638					Shut Down
1649	0		5	3.5	Pump 5 bbls Ahead (3rd)
1653	0		5.3	3.5	Pump 20 SKS @ 13.5 PPG 60/40 Poz 60 ft 540' ft
1654	0		1	3.5	Displace with 1 bbl
1655			5.5	3.5	Shut Down
1715	0		5.3	3.5	Pump 30 SKS @ 13.5 PPG 60/40 Poz 60 ft
					Rat Hole
1728	0		3.5	3.5	Pump 20 SKS @ 13.5 PPG 60/40 Poz Mouse Hole
1741					Shut Down

Service Units	78940	39878	387.5019842	302114284	
Driver Names	Ruben	Juan O	Carlos	Santiago	

Allen
Customer Representative

Jerry Bennett
Station Manager

Ruben
Cementer



SUITABLE FOR
MARTIN DECKER
Johns Enterprise
CHART 273
P/A well
4/29/13

