



**TRILOBITE  
TESTING, INC.**

# DRILL STEM TEST REPORT

Shakespeare Oil Co, Inc

**28 13s 34w Logan, Ks**

202 W Main Street  
Salem, Il 62881

**Pahls # 1-28**

Job Ticket: 49173

**DST#: 1**

ATTN: Tim Priest

Test Start: 2013.04.26 @ 14:39:00

## GENERAL INFORMATION:

Formation: **LKC - I**

Deviated: No Whipstock: ft (KB)

Time Tool Opened: 17:10:00

Time Test Ended: 21:24:15

Test Type: Conventional Bottom Hole (Initial)

Tester: Bradley Walter

Unit No: 53

**Interval: 4006.00 ft (KB) To 4020.00 ft (KB) (TVD)**

Reference Elevations: 2911.00 ft (KB)

Total Depth: 4020.00 ft (KB) (TVD)

2901.00 ft (CF)

Hole Diameter: 7.88 inches Hole Condition: Good

KB to GR/CF: 10.00 ft

**Serial #: 8522 Outside**

Press @ Run Depth: 34.24 psig @ 4007.00 ft (KB)

Capacity: 8000.00 psig

Start Date: 2013.04.26

End Date:

2013.04.26

Last Calib.:

2013.04.26

Start Time:

14:39:05

End Time:

21:24:14

Time On Btm:

2013.04.26 @ 17:09:45

Time Off Btm:

2013.04.26 @ 19:15:30

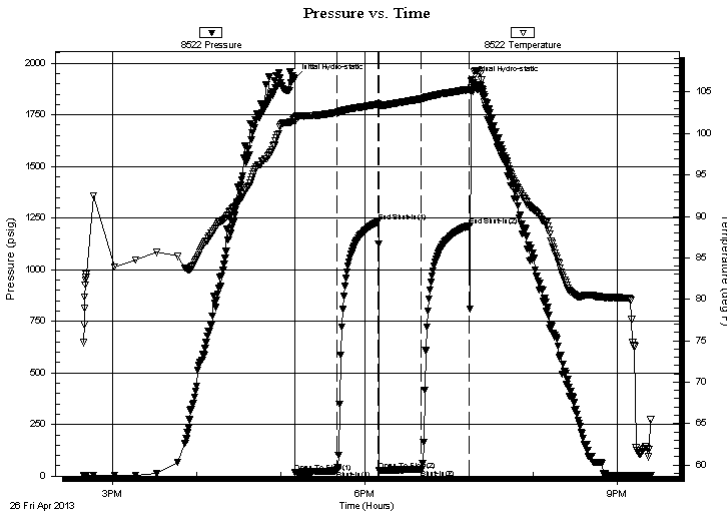
**TEST COMMENT:** IF: Surface blow, died @ 25 min.

IS: No return.

FF: No blow.

FS: No return.

## PRESSURE SUMMARY



Time (Min.)	Pressure (psig)	Temp (deg F)	Annotation
0	1923.53	101.78	Initial Hydro-static
1	18.93	101.39	Open To Flow (1)
30	25.80	102.53	Shut-In(1)
60	1231.45	103.53	End Shut-In(1)
60	27.50	103.22	Open To Flow (2)
90	34.24	104.16	Shut-In(2)
125	1213.42	105.33	End Shut-In(2)
126	1914.21	105.56	Final Hydro-static

## Recovery

Length (ft)	Description	Volume (bbl)
25.00	1mcw (oil spots in tool)	0.12

## Gas Rates

Choke (inches)	Pressure (psig)	Gas Rate (Mcf/d)



**TRILOBITE  
TESTING, INC.**

# DRILL STEM TEST REPORT

**FLUID SUMMARY**

Shakespeare Oil Co, Inc

**28 13s 34w Logan, Ks**

202 W Main Street  
Salem, Il 62881

**Pahls # 1-28**

Job Ticket: 49173

**DST#: 1**

ATTN: Tim Priest

Test Start: 2013.04.26 @ 14:39:00

## Mud and Cushion Information

Mud Type: Gel Chem

Cushion Type:

Oil API:

0 deg API

Mud Weight: 9.00 lb/gal

Cushion Length:

ft

Water Salinity:

30000 ppm

Viscosity: 49.00 sec/qt

Cushion Volume:

bbbl

Water Loss: 7.20 in<sup>3</sup>

Gas Cushion Type:

Resistivity: ohm.m

Gas Cushion Pressure:

psig

Salinity: 4400.00 ppm

Filter Cake: 1.00 inches

## Recovery Information

Recovery Table

Length ft	Description	Volume bbl
25.00	1mcw (oil spots in tool)	0.123

Total Length: 25.00 ft      Total Volume: 0.123 bbl

Num Fluid Samples: 0

Num Gas Bombs: 0

Serial #:

Laboratory Name:

Laboratory Location:

Recovery Comments: rw is .250 @ 63F = 30,000ppm

