



TRILOBITE TESTING, INC.

DRILL STEM TEST REPORT

Shakespeare Oil Co, Inc

28 13s 34w Logan, Ks

202 W Main Street
Salem, Il 62881

Pahls # 1-28

Job Ticket: 49175

DST#: 3

ATTN: Tim Priest

Test Start: 2013.04.28 @ 10:27:00

GENERAL INFORMATION:

Formation: **LKC - K**

Deviated: No Whipstock: ft (KB)

Time Tool Opened: 12:18:15

Time Test Ended: 17:16:15

Test Type: Conventional Bottom Hole (Reset)

Tester: Bradley Walter

Unit No: 53

Interval: 4045.00 ft (KB) To 4065.00 ft (KB) (TVD)

Reference Elevations: 2911.00 ft (KB)

Total Depth: 4065.00 ft (KB) (TVD)

2901.00 ft (CF)

Hole Diameter: 7.88 inches Hole Condition: Good

KB to GR/CF: 10.00 ft

Serial #: 8522 Outside

Press @ Run Depth: 112.70 psig @ 4046.00 ft (KB)

Capacity: 8000.00 psig

Start Date: 2013.04.28

End Date: 2013.04.28

Last Calib.: 2013.04.28

Start Time: 10:27:05

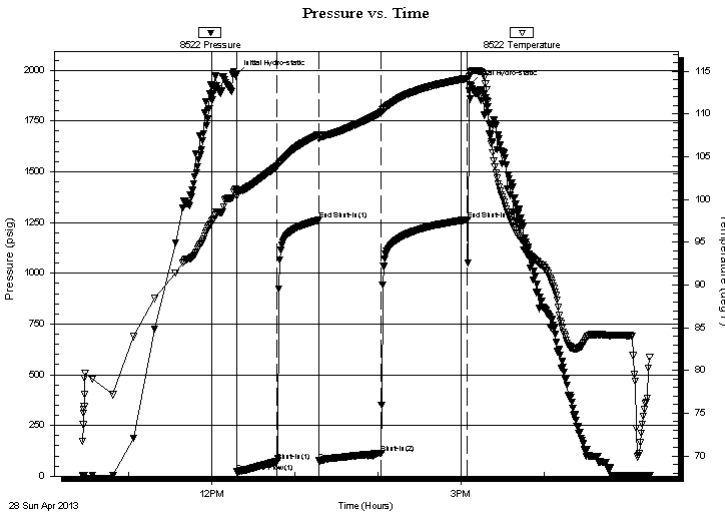
End Time: 17:16:14

Time On Btm: 2013.04.28 @ 12:18:00

Time Off Btm: 2013.04.28 @ 15:06:45

TEST COMMENT: IF: 4" blow.
IS: No return.
FF: 6" Blow.
FS: No return.

PRESSURE SUMMARY



Time (Min.)	Pressure (psig)	Temp (deg F)	Annotation
0	1980.20	101.20	Initial Hydro-static
1	20.91	100.36	Open To Flow (1)
30	72.19	103.91	Shut-In(1)
60	1261.26	107.60	End Shut-In(1)
60	74.57	107.14	Open To Flow (2)
105	112.70	110.13	Shut-In(2)
167	1263.58	114.17	End Shut-In(2)
169	1931.55	114.80	Final Hydro-static

Recovery

Length (ft)	Description	Volume (bbl)
210.00	mcw 10m 90w (oil spots)	1.36

Gas Rates

	Choke (inches)	Pressure (psig)	Gas Rate (Mcf/d)

* Recovery from multiple tests



**TRILOBITE
TESTING, INC.**

DRILL STEM TEST REPORT

FLUID SUMMARY

Shakespeare Oil Co, Inc

28 13s 34w Logan, Ks

202 W Main Street
Salem, Il 62881

Pahls # 1-28

Job Ticket: 49175

DST#: 3

ATTN: Tim Priest

Test Start: 2013.04.28 @ 10:27:00

Mud and Cushion Information

Mud Type: Gel Chem

Cushion Type:

Oil API:

0 deg API

Mud Weight: 9.00 lb/gal

Cushion Length:

ft

Water Salinity:

53000 ppm

Viscosity: 54.00 sec/qt

Cushion Volume:

bbbl

Water Loss: 8.79 in³

Gas Cushion Type:

Resistivity: ohm.m

Gas Cushion Pressure:

psig

Salinity: 4500.00 ppm

Filter Cake: 1.00 inches

Recovery Information

Recovery Table

Length ft	Description	Volume bbl
210.00	mcw 10m 90w (oil spots)	1.365

Total Length: 210.00 ft Total Volume: 1.365 bbl

Num Fluid Samples: 0

Num Gas Bombs: 0

Serial #:

Laboratory Name:

Laboratory Location:

Recovery Comments: rw iw .130 @ 75F = 53000ppm

Pressure vs. Time

