



**TRILOBITE  
TESTING, INC.**

# DRILL STEM TEST REPORT

Shakespeare Oil Co, Inc

**28 13s 34w Logan, Ks**

202 W Main Street  
Salem, Il 62881

**Pahls # 1-28**

ATTN: Tim Priest

Job Ticket: 53227

**DST#: 5**

Test Start: 2013.05.01 @ 01:06:00

## GENERAL INFORMATION:

Formation: **Johnson**

Deviated: No Whipstock: ft (KB)

Time Tool Opened: 03:58:00

Time Test Ended: 09:00:00

Test Type: Conventional Bottom Hole (Reset)

Tester: Bradley Walter

Unit No: 53

**Interval: 4371.00 ft (KB) To 4430.00 ft (KB) (TVD)**

Reference Elevations: 2911.00 ft (KB)

Total Depth: 4430.00 ft (KB) (TVD)

2901.00 ft (CF)

Hole Diameter: 7.88 inches Hole Condition: Good

KB to GR/CF: 10.00 ft

**Serial #: 8522 Outside**

Press @ RunDepth: 27.82 psig @ 4372.00 ft (KB)

Capacity: 8000.00 psig

Start Date: 2013.05.01

End Date:

2013.05.01

Last Calib.:

2013.05.01

Start Time:

01:06:05

End Time:

08:59:59

Time On Btm:

2013.05.01 @ 03:57:45

Time Off Btm:

2013.05.01 @ 06:00:45

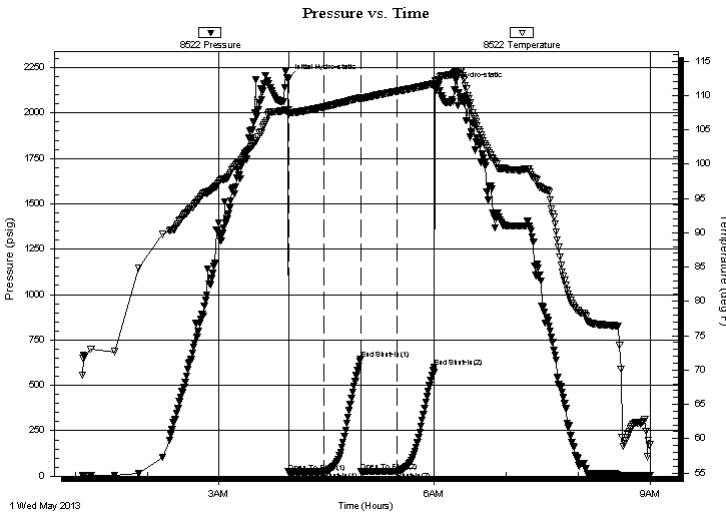
**TEST COMMENT:** IF: Surface blow, died @ 14 min.

IS: No return.

FF: No blow.

FS: No return.

## PRESSURE SUMMARY



Time (Min.)	Pressure (psig)	Temp (deg F)	Annotation
0	2186.89	107.91	Initial Hydro-static
1	22.94	107.16	Open To Flow (1)
30	24.64	108.33	Shut-In(1)
61	646.05	109.65	End Shut-In(1)
61	25.18	109.35	Open To Flow (2)
92	27.82	110.61	Shut-In(2)
122	600.91	111.71	End Shut-In(2)
123	2144.66	112.17	Final Hydro-static

## Recovery

Length (ft)	Description	Volume (bbl)
15.00	mud 100m(oil spots)	0.07

\* Recovery from multiple tests

## Gas Rates

Choke (inches)	Pressure (psig)	Gas Rate (Mcf/d)



**TRILOBITE  
TESTING, INC.**

# DRILL STEM TEST REPORT

**FLUID SUMMARY**

Shakespeare Oil Co, Inc

**28 13s 34w Logan, Ks**

202 W Main Street  
Salem, Il 62881

**Pahls # 1-28**

Job Ticket: 53227

**DST#: 5**

ATTN: Tim Priest

Test Start: 2013.05.01 @ 01:06:00

## Mud and Cushion Information

Mud Type: Gel Chem

Cushion Type:

Oil API:

0 deg API

Mud Weight: 9.00 lb/gal

Cushion Length:

ft

Water Salinity:

0 ppm

Viscosity: 53.00 sec/qt

Cushion Volume:

bbbl

Water Loss: 7.20 in<sup>3</sup>

Gas Cushion Type:

Resistivity: ohm.m

Gas Cushion Pressure:

psig

Salinity: 5000.00 ppm

Filter Cake: 1.00 inches

## Recovery Information

Recovery Table

Length ft	Description	Volume bbl
15.00	mud 100m(oil spots)	0.074

Total Length: 15.00 ft      Total Volume: 0.074 bbl

Num Fluid Samples: 0

Num Gas Bombs: 0

Serial #:

Laboratory Name:

Laboratory Location:

Recovery Comments:

