



**TRILOBITE  
TESTING, INC.**

# DRILL STEM TEST REPORT

Forestar Petroleum Corp  
1801 Broadway #900  
Denver, Colo  
80202  
ATTN: Charlie Sturdavant

15-17s-29w Lane, Ks

Grace Elaine #1-15

Job Ticket: 49176

DST#: 1

Test Start: 2013.03.23 @ 17:10:57

## GENERAL INFORMATION:

Formation: **E-F**

Deviated: No Whipstock: 0.00 ft (KB)

Time Tool Opened: 19:03:57

Time Test Ended: 01:41:42

Test Type: Conventional Bottom Hole (Initial)

Tester: Shane McBride

Unit No: 55

Interval: **4020.00 ft (KB) To 4060.00 ft (KB) (TVD)**

Reference Elevations: 2796.00 ft (KB)

Total Depth: 4060.00 ft (KB) (TVD)

2791.00 ft (CF)

Hole Diameter: 7.88 inches Hole Condition: Fair

KB to GR/CF: 5.00 ft

**Serial #: 6667** Inside

Press @ Run Depth: 97.99 psig @ 4021.00 ft (KB)

Capacity: 8000.00 psig

Start Date: 2013.03.23

End Date:

2013.03.24

Last Calib.: 2013.03.24

Start Time: 17:10:57

End Time:

01:41:42

Time On Btm: 2013.03.23 @ 19:03:42

Time Off Btm: 2013.03.23 @ 23:08:42

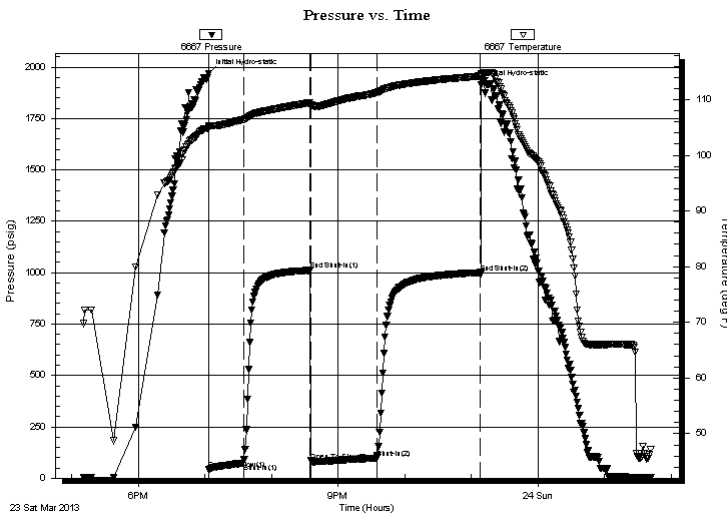
TEST COMMENT: Slide tool 4' to bottom 2" in blow @ open built to 6" in.

No return

7" in blow

No return

## PRESSURE SUMMARY



Time (Min.)	Pressure (psig)	Temp (deg F)	Annotation
0	1967.04	105.38	Initial Hydro-static
1	42.97	105.01	Open To Flow (1)
31	71.73	106.39	Shut-In(1)
92	1011.27	109.43	End Shut-In(1)
92	83.85	109.13	Open To Flow (2)
152	97.99	111.23	Shut-In(2)
245	1000.28	114.23	End Shut-In(2)
245	1913.45	114.39	Final Hydro-static

## Recovery

Length (ft)	Description	Volume (bbl)
120.00	o c m 10%o 90%m	0.59
65.00	h o c m 35%o 65%m	0.88

## Gas Rates

	Choke (inches)	Pressure (psig)	Gas Rate (Mcf/d)



**TRILOBITE  
TESTING, INC.**

# DRILL STEM TEST REPORT

**FLUID SUMMARY**

Forestar Petroleum Corp

**15-17s-29w Lane, Ks**

1801 Broadway #900  
Denver, Colo  
80202

**Grace Elaine #1-15**

Job Ticket: 49176

**DST#: 1**

ATTN: Charlie Sturdavant

Test Start: 2013.03.23 @ 17:10:57

## Mud and Cushion Information

Mud Type: Gel Chem

Cushion Type:

Oil API:

0 deg API

Mud Weight: 9.00 lb/gal

Cushion Length:

ft

Water Salinity:

0 ppm

Viscosity: 52.00 sec/qt

Cushion Volume:

bbbl

Water Loss: 5.20 in<sup>3</sup>

Gas Cushion Type:

Resistivity: 0.00 ohm.m

Gas Cushion Pressure:

psig

Salinity: 1500.00 ppm

Filter Cake: 1.00 inches

## Recovery Information

Recovery Table

Length ft	Description	Volume bbbl
120.00	o c m 10%o 90%m	0.590
65.00	h o c m 35%o 65%m	0.875

Total Length: 185.00 ft

Total Volume: 1.465 bbl

Num Fluid Samples: 0

Num Gas Bombs: 0

Serial #:

Laboratory Name:

Laboratory Location:

Recovery Comments:

Serial #: 6667

Inside

Forestar Petroleum Corp

Grace Blaine #1-15

DST Test Number: 1

